

Catalog #: 5882

Aliases

EPS15L1; Epidermal Growth Factor Receptor Pathway Substrate 15 Like 1; Eps15R; Epidermal Growth Factor Receptor Substrate 15-Like 1; Eps15-Related Protein; Epidermal Growth Factor Receptor Pathway Substrate 15-Like 1; Epidermal Growth Factor Receptor Substrate EPS15R; EPS15R

Background

Gene Name: EPS15L1

NCBI Gene Entry: [58513](#)

UniProt Entry: [Q9UBC2](#)

Application Information

Molecular Weight: Predicted, 94 kDa; observed, 94 kDa

Clonality: Mouse monoclonal antibody

Clone ID: 25GB5645

Species Reactivity: Human, mouse, rat

Applications Tested: Western blotting (WB)

Immunogen

Recombinant protein of human EPS15L1

Isotype

Mouse IgG1

Storage Buffer

Supplied in PBS (pH 7.4) containing 50% glycerol, and 0.02% sodium azide.

Storage

Store at -20 °C for one year.

Recommended Dilutions

Western Blotting (WB): 1:400-1:2,000

Note: This product is for research use only.

Validation Data

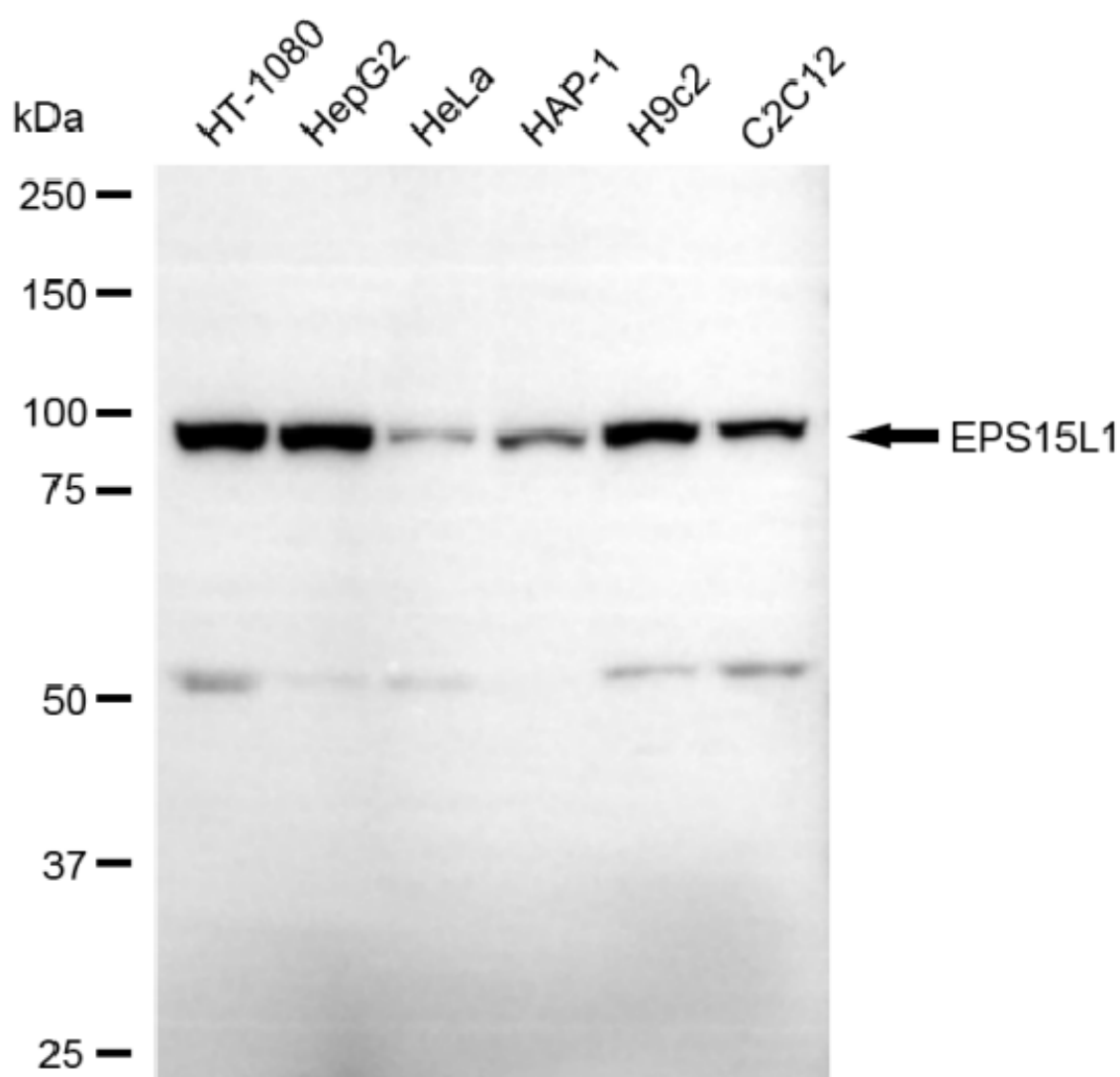
SUPPORT

SUPPORT@GENUINBIOTECH.COM
TEL: +1-540-855-7041

ORDERS

SALES@GENUINBIOTECH.COM
FAX: +1-540-855-7041

WWW.GENUINBIOTECH.COM



Copyright ©2025 Genuin Biotechnologies LLC

Western blotting analysis using anti-EPS15L1 antibody (Cat#5882). Total cell lysates (30 µg) from various cell lines were loaded and separated by SDS-PAGE. The blot was incubated with anti-EPS15L1 antibody (Cat#5882, 1:2,000) and HRP-conjugated goat anti-mouse secondary antibody (Cat#101, 1:20,000) respectively. Image was developed using FeQ™ ECL Substrate Kit (Cat#226).

SUPPORT

SUPPORT@GENUINBIOTECH.COM
TEL: +1-540-855-7041

ORDERS

SALES@GENUINBIOTECH.COM
FAX: +1-540-855-7041

WWW.GENUINBIOTECH.COM