

Catalog #: 5885

Aliases

PSMB7; Proteasome 20S Subunit Beta 7; Z; Proteasome (Prosome, Macropain) Subunit, Beta Type, 7; Multicatalytic Endopeptidase Complex Chain Z; Proteasome Subunit Beta Type-7; Proteasome Subunit Beta 7; Proteasome Subunit Beta-2; Proteasome Subunit Z; Macropain Chain Z; EC 3.4.25.1; Beta-2; Epididymis Secretory Sperm Binding Protein; Proteasome Catalytic Subunit; Protein Serine Kinase C17; Proteasome Subunit Alpha; Proteasome Subunit Beta2; Proteasome Subunit B2

Background

Gene Name: PSMB7

NCBI Gene Entry: [5695](#)

UniProt Entry: [Q99436](#)

Application Information

Molecular Weight: Predicted, 30 kDa; observed, 28,33 kDa

Clonality: Mouse monoclonal antibody

Clone ID: 25GB5660

Species Reactivity: Human, mouse, rat

Applications Tested: Western blotting (WB)

Immunogen

Recombinant protein of human PSMB7

Isotype

Mouse IgG1

Storage Buffer

Supplied in PBS (pH 7.4) containing 50% glycerol, and 0.02% sodium azide.

Storage

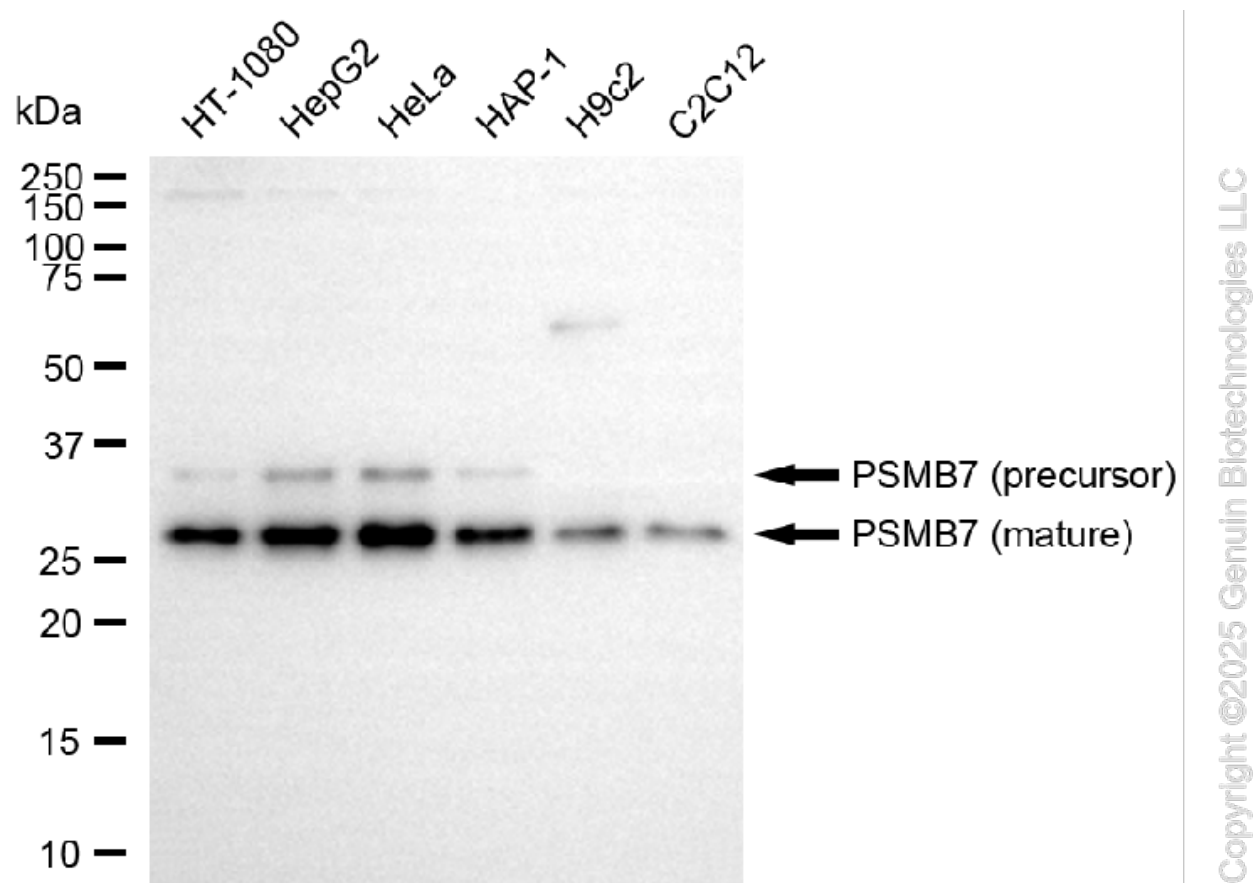
Store at -20 °C for one year.

Recommended Dilutions

Western Blotting (WB): 1:400-1:2,000

Note: This product is for research use only.

Validation Data



Western blotting analysis using anti-PSMB7 antibody (Cat#5885). Total cell lysates (30 µg) from various cell lines were loaded and separated by SDS-PAGE. The blot was incubated with anti-PSMB7 antibody (Cat#5885, 1:2,000) and HRP-conjugated goat anti-mouse secondary antibody (Cat#101, 1:20,000) respectively. Image was developed using FeQ™ ECL Substrate Kit (Cat#226).

SUPPORT

SUPPORT@GENUINBIOTECH.COM
TEL: +1-540-855-7041

ORDERS

SALES@GENUINBIOTECH.COM
FAX: +1-540-855-7041

WWW.GENUINBIOTECH.COM