

**Catalog #: 5886**

## Aliases

TUBAL3; Tubulin Alpha Like 3; Tubulin Alpha Chain-Like 3; FLJ21665; Tubulin, Alpha-Like 3; EC 3.6.5.-

## Background

Gene Name: TUBAL3

NCBI Gene Entry: [79861](#)

UniProt Entry: [A6NHL2](#)

## Application Information

Molecular Weight: Predicted, 50 kDa, observed, 50 kDa

Clonality: Mouse monoclonal antibody

Clone ID: 25GB5675

Species Reactivity: Human, mouse, rat

Applications Tested: Western blotting (WB)

## Immunogen

Recombinant protein of human TUBAL3

## Isotype

Mouse IgG2b

## Storage Buffer

Supplied in PBS (pH 7.4) containing 50% glycerol, and 0.02% sodium azide.

## Storage

Store at -20 °C for one year.

## Recommended Dilutions

Western Blotting (WB): 1:2,000-1:10,000

**Note:** This product is for research use only.

## Validation Data

---

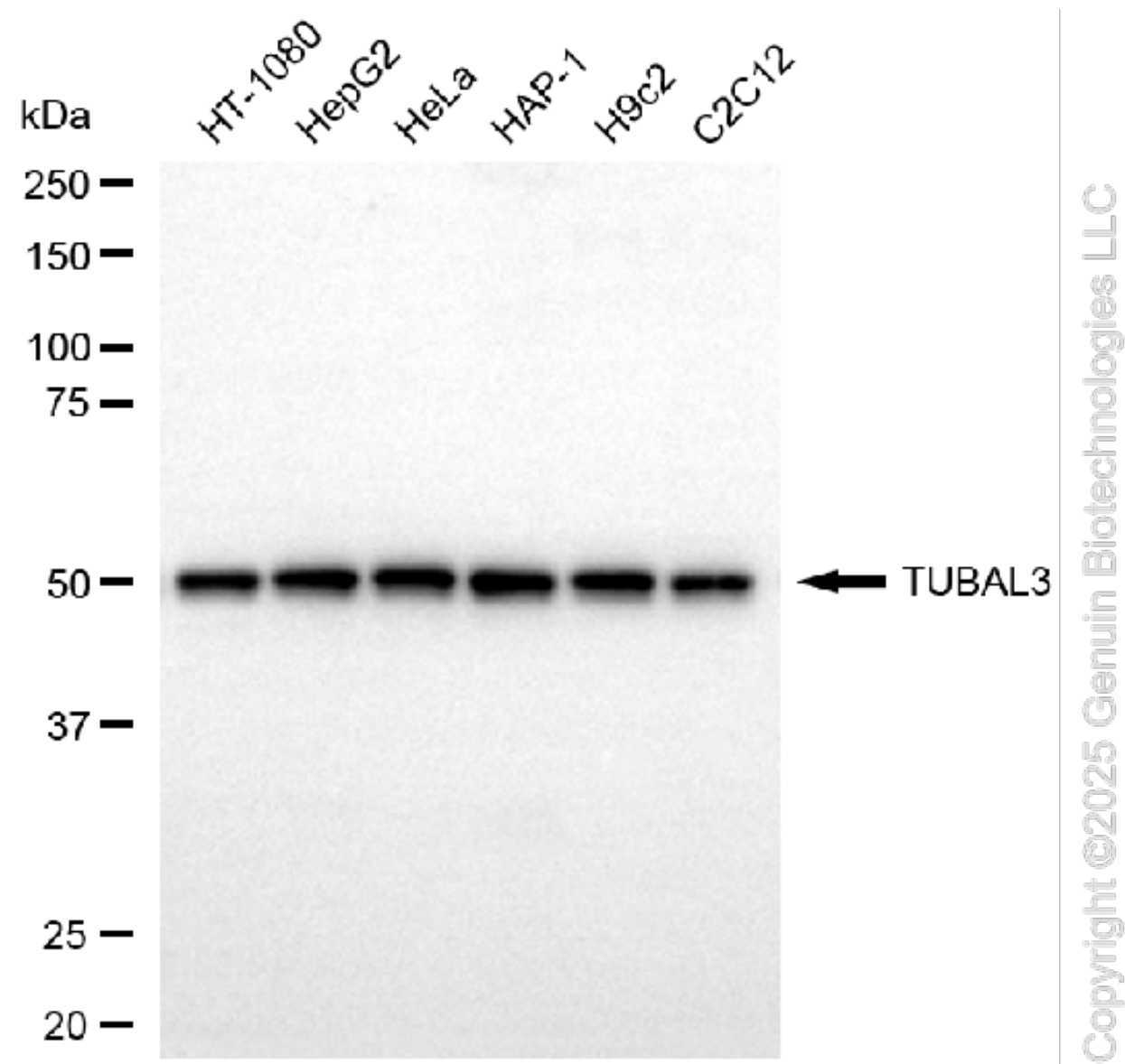
### SUPPORT

SUPPORT@GENUINBIOTECH.COM  
TEL: +1-540-855-7041

### ORDERS

SALES@GENUINBIOTECH.COM  
FAX: +1-540-855-7041

[WWW.GENUINBIOTECH.COM](http://WWW.GENUINBIOTECH.COM)



Western blotting analysis using anti-TUBAL3 antibody (Cat#5886). Total cell lysates (10  $\mu$ g) from various cell lines were loaded and separated by SDS-PAGE. The blot was incubated with anti-TUBAL3 antibody (Cat#5886, 1:10,000) and HRP-conjugated goat anti-mouse secondary antibody (Cat#101, 1:20,000) respectively. Image was developed using FeQ™ ECL Substrate Kit (Cat#226).

**SUPPORT**

SUPPORT@GENUINBIOTECH.COM  
TEL: +1-540-855-7041

**ORDERS**

SALES@GENUINBIOTECH.COM  
FAX: +1-540-855-7041

[WWW.GENUINBIOTECH.COM](http://WWW.GENUINBIOTECH.COM)