

Catalog #: 5907

Aliases

KITLG; KIT Ligand; SCF; Mast Cell Growth Factor; Stem Cell Factor; DFNA69; Kitl; KL-1; FPH2; SLF; MGF; SF; Familial Progressive Hyperpigmentation 2; Steel Factor; C-Kit Ligand; Kit Ligand; SHEP7; DCUA; FPHH; WS2F

Background

NCBI Gene Entry: [4254](#)

UniProt Entry: [P21583](#)

Application Information

Molecular Weight: Predicted, 31 kDa; observed, 33 kDa

Clonality: Mouse monoclonal antibody

Clone ID: 25GB5775

Species Reactivity: Human, mouse, rat

Applications Tested: Western blotting (WB), flow cytometry (FCM)

Immunogen

Recombinant protein of human KITLG

Isotype

Mouse IgG1

Storage Buffer

Supplied in PBS (pH 7.4) containing 50% glycerol, and 0.02% sodium azide.

Storage

Store at -20 °C for one year.

Recommended Dilutions

Western Blotting (WB): 1:400-1:5,000

Flow Cytometry (FCM): 1:200-1:2,000

Note: This product is for research use only.

Validation Data

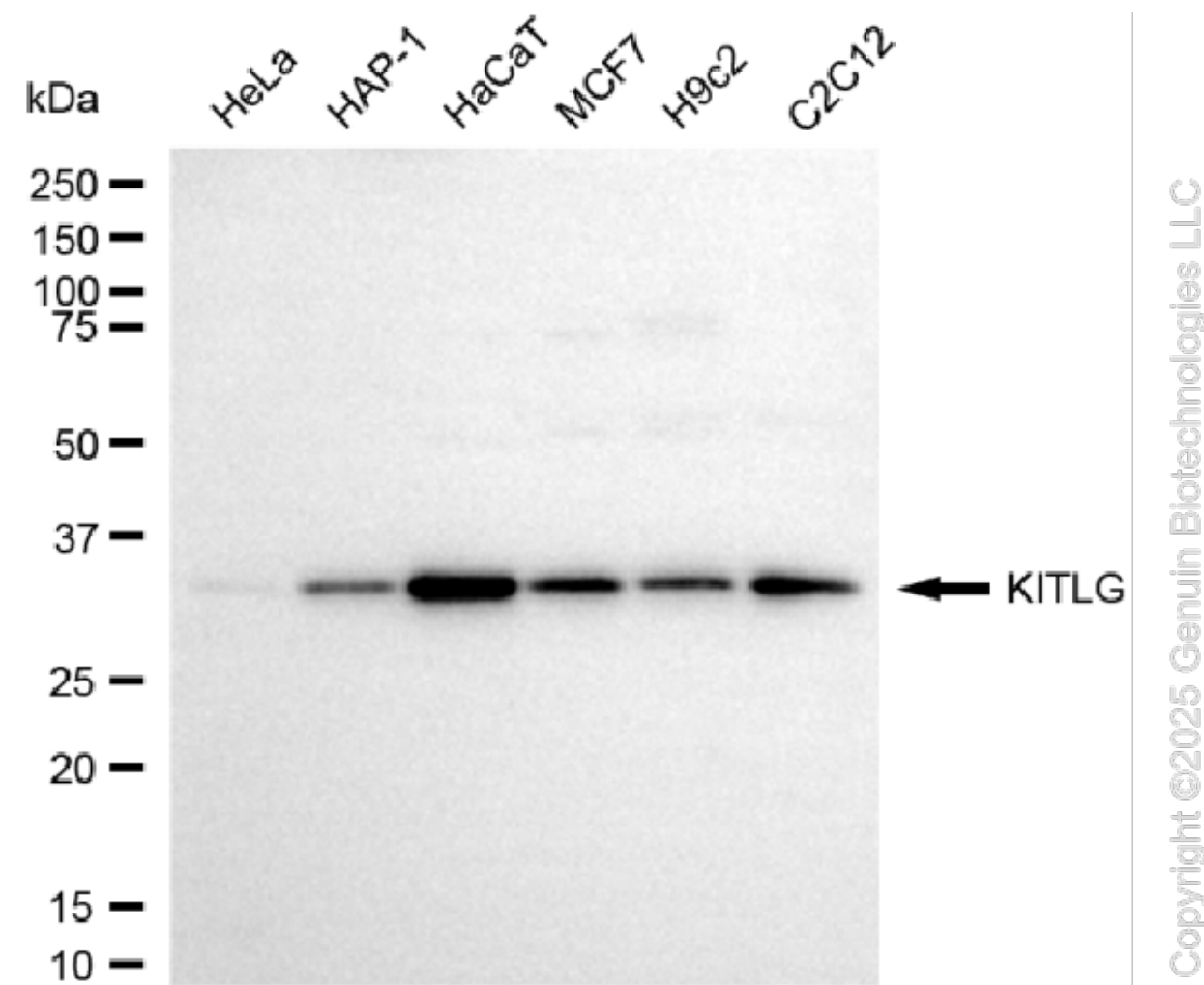
SUPPORT

SUPPORT@GENUINBIOTECH.COM
TEL: +1-540-855-7041

ORDERS

SALES@GENUINBIOTECH.COM
FAX: +1-540-855-7041

WWW.GENUINBIOTECH.COM



Western blotting analysis using anti-KITLG antibody (Cat#5907). Total cell lysates (30 μ g) from various cell lines were loaded and separated by SDS-PAGE. The blot was incubated with anti-KITLG antibody (Cat#5907, 1:5,000) and HRP-conjugated goat anti-mouse secondary antibody (Cat#101, 1:20,000) respectively. Image was developed using FeQ™ ECL Substrate Kit (Cat#226).

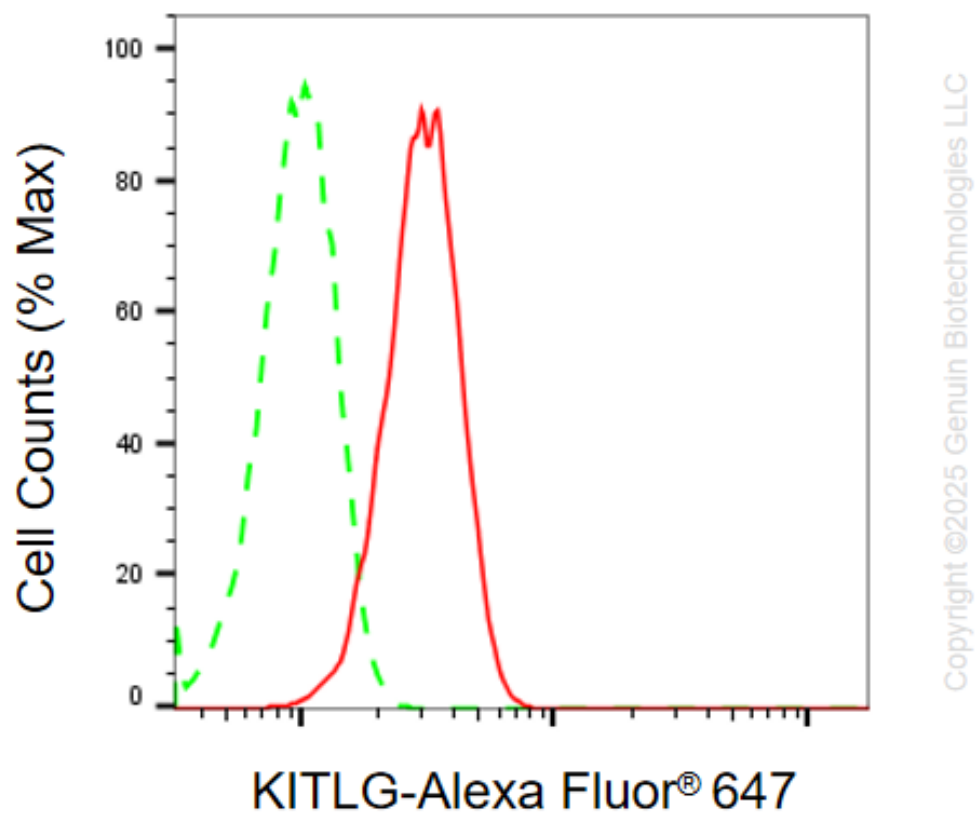
SUPPORT

SUPPORT@GENUINBIOTECH.COM
TEL: +1-540-855-7041

ORDERS

SALES@GENUINBIOTECH.COM
FAX: +1-540-855-7041

WWW.GENUINBIOTECH.COM



Flow cytometric analysis of KITLG expression in C2C12 cells using anti-KITLG antibody (Cat#5907, 1:2,000). Green, isotype control; red, KITLG.