

## Catalog #: 5908

### Aliases

TLE1; TLE Family Member 1, Transcriptional Corepressor; ESG1; TLE-1; GRG1; ESG; Transducin-Like Enhancer Of Split 1 (E(Sp1) Homolog, Drosophila); Enhancer Of Split Groucho-Like Protein 1; Transducin Like Enhancer Of Split 1; Transducin-Like Enhancer Protein 1; Enhancer Of Split Groucho 1; E(Sp1) Homolog

### Background

NCBI Gene Entry: [7088](#)

UniProt Entry: [Q04724](#)

### Application Information

Molecular Weight: Predicted, 83 kDa; observed, 78-90 kDa

Clonality: Mouse monoclonal antibody

Clone ID: 25GB5780

Species Reactivity: Human, mouse, rat

Applications Tested: Western blotting (WB)

### Immunogen

Recombinant protein of human TLE1

### Isotype

Mouse IgG2b

### Storage Buffer

Supplied in PBS (pH 7.4) containing 50% glycerol, and 0.02% sodium azide.

### Storage

Store at -20 °C for one year.

### Recommended Dilutions

Western Blotting (WB): 1:500-1:2,500

**Note:** This product is for research use only.

### Validation Data

---

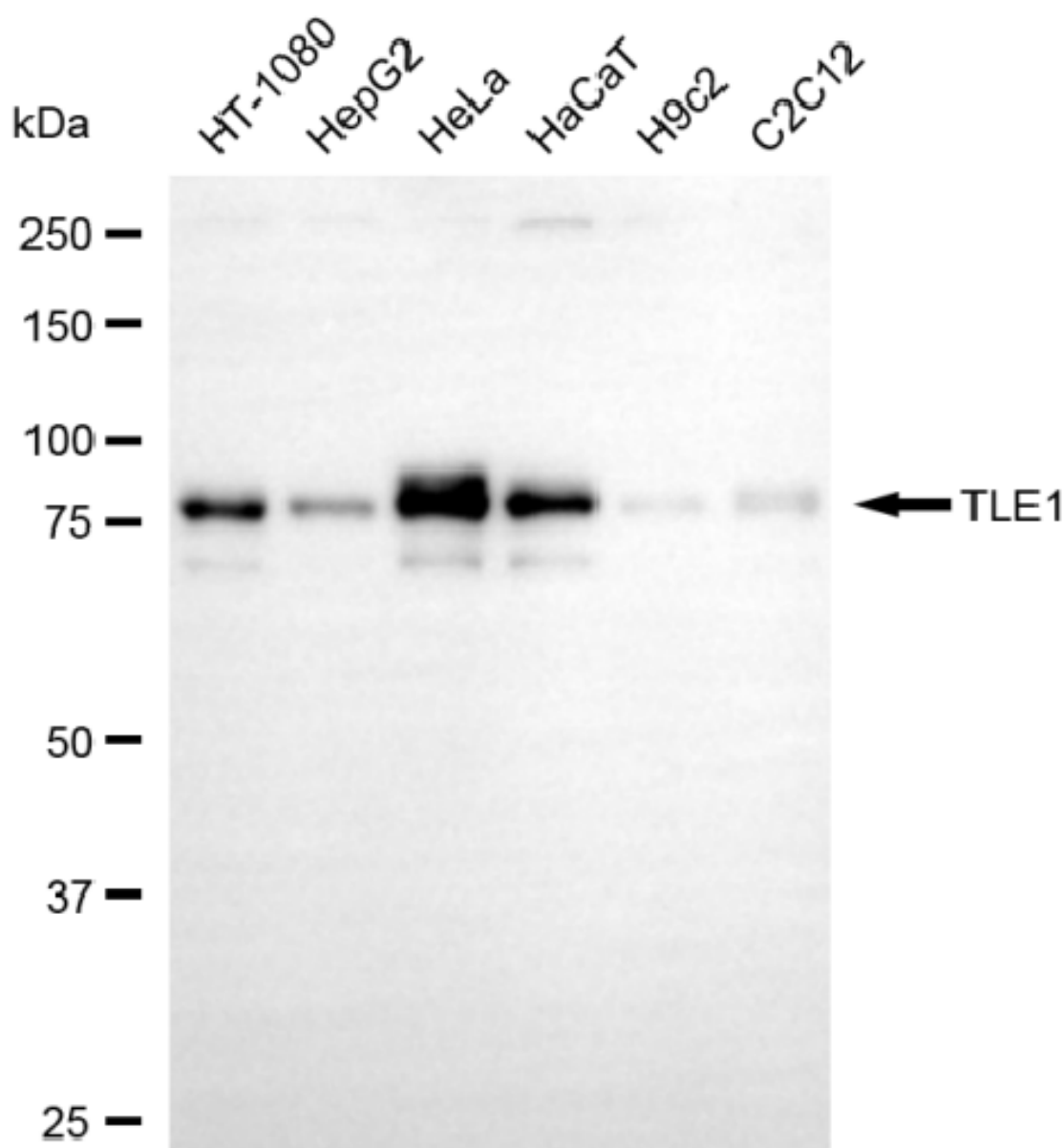
#### SUPPORT

SUPPORT@GENUINBIOTECH.COM  
TEL: +1-540-855-7041

#### ORDERS

SALES@GENUINBIOTECH.COM  
FAX: +1-540-855-7041

[WWW.GENUINBIOTECH.COM](http://WWW.GENUINBIOTECH.COM)



Copyright ©2025 Genuin Biotechnologies LLC

Western blotting analysis using anti-TLE1 antibody (Cat#5908). Total cell lysates (30 µg) from various cell lines were loaded and separated by SDS-PAGE. The blot was incubated with anti-TLE1 antibody (Cat#5908, 1:2,500) and HRP-conjugated goat anti-mouse secondary antibody (Cat#101, 1:20,000) respectively. Image was developed using FeQ™ ECL Substrate Kit (Cat#226).

**SUPPORT**

SUPPORT@GENUINBIOTECH.COM  
TEL: +1-540-855-7041

**ORDERS**

SALES@GENUINBIOTECH.COM  
FAX: +1-540-855-7041

[WWW.GENUINBIOTECH.COM](http://WWW.GENUINBIOTECH.COM)