

Catalog #: 5915

Aliases

MTDH; Metadherin; LYRIC; AEG-1; 3D3; Lysine-Rich CEACAM1 Co-Isolated Protein; Astrocyte Elevated Gene-1 Protein; Metastasis Adhesion Protein; Astrocyte Elevated Gene 1; Protein LYRIC; 3D3/LYRIC; AEG1; LYRIC/3D3

Background

NCBI Gene Entry: [92140](#)

UniProt Entry: [Q86UE4](#)

Application Information

Molecular Weight: Predicted, 64 kDa; observed, 70-75 kDa

Clonality: Mouse monoclonal antibody

Clone ID: 25GB5810

Species Reactivity: Human

Applications Tested: Western blotting (WB), flow cytometry (FCM)

Immunogen

Recombinant protein of human MTDH

Isotype

Mouse IgG1

Storage Buffer

Supplied in PBS (pH 7.4) containing 50% glycerol, and 0.02% sodium azide.

Storage

Store at -20 °C for one year.

Recommended Dilutions

Western Blotting (WB): 1:500-1:2,500

Flow Cytometry (FCM): 1:200-1:2,000

Note: This product is for research use only.

Validation Data

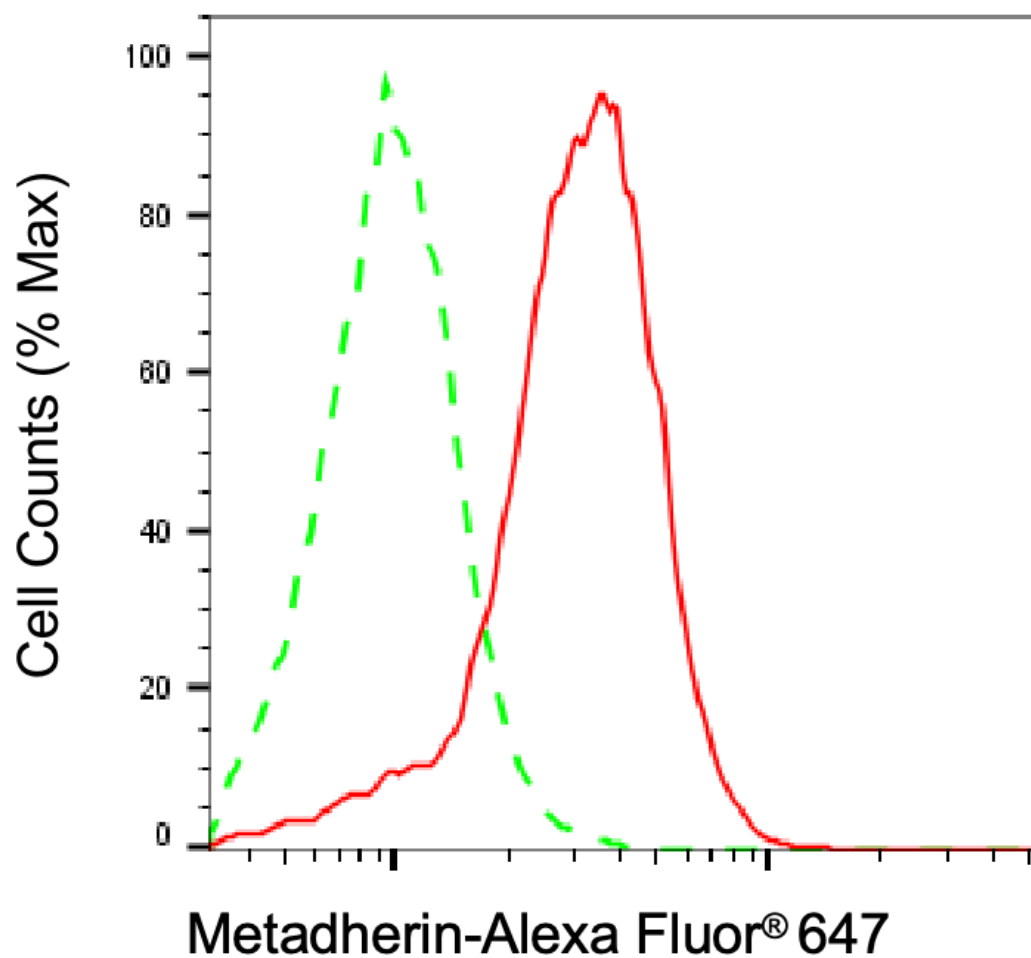
SUPPORT

SUPPORT@GENUINBIOTECH.COM
TEL: +1-540-855-7041

ORDERS

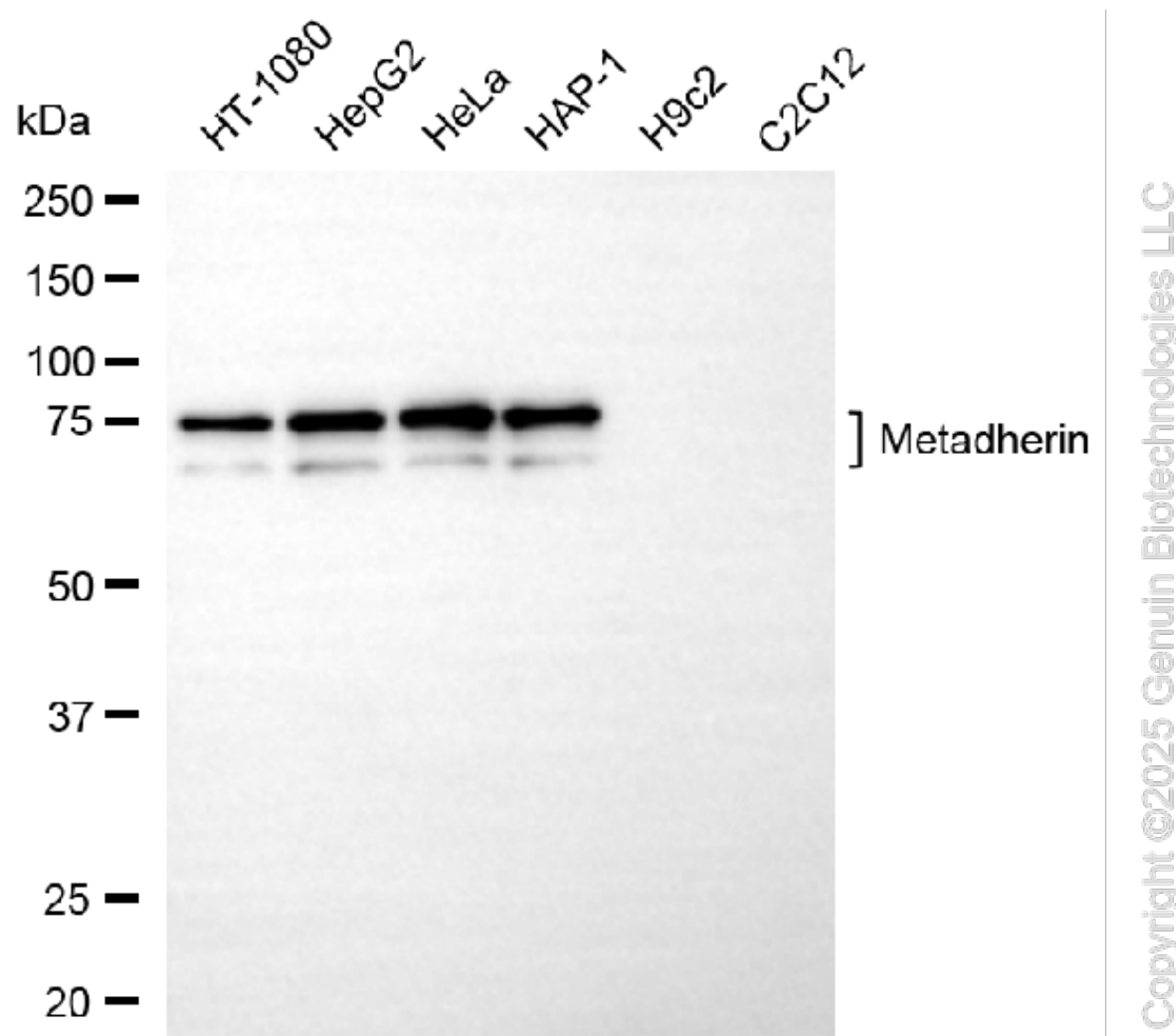
SALES@GENUINBIOTECH.COM
FAX: +1-540-855-7041

WWW.GENUINBIOTECH.COM



Copyright ©2025 Genuin Biotechnologies LLC

Flow cytometric analysis of Metadherin expression in HepG2 cells using anti-Metadherin antibody (Cat#5915, 1:2,000). Green, isotype control; red, Metadherin.



Western blotting analysis using anti-metadherin antibody (Cat#5915). Total cell lysates (30 µg) from various cell lines were loaded and separated by SDS-PAGE. The blot was incubated with anti-metadherin antibody (Cat#5915, 1:2,500) and HRP-conjugated goat anti-mouse secondary antibody (Cat#101, 1:20,000) respectively. Image was developed using FeQ™ ECL Substrate Kit (Cat#226).

SUPPORT

SUPPORT@GENUINBIOTECH.COM
TEL: +1-540-855-7041

ORDERS

SALES@GENUINBIOTECH.COM
FAX: +1-540-855-7041

WWW.GENUINBIOTECH.COM