

Catalog #: 5916

Aliases

PPP1R8; Protein Phosphatase 1 Regulatory Subunit 8; NIPP-1; NIPP1; ARD1; PRO2047; Ard-1; Protein Phosphatase 1, Regulatory (Inhibitor) Subunit 8; Nuclear Inhibitor Of Protein Phosphatase 1; Nuclear Subunit Of PP-1; Activator Of RNA Decay; RNase E; Protein Phosphatase 1 Regulatory Inhibitor Subunit 8; Nuclear Inhibitor Of Protein Phosphatase-1 Alpha; Nuclear Inhibitor Of Protein Phosphatase-1 Beta; Protein Phosphatase 1, Regulatory Subunit 8; Nuclear Inhibitor Of Protein Phosphatase-1

Background

NCBI Gene Entry: [5511](#)

UniProt Entry: [Q12972](#)

Application Information

Molecular Weight: Predicted, 38 kDa; observed, 39 kDa

Clonality: Mouse monoclonal antibody

Clone ID: 25GB5815

Species Reactivity: Human, mouse, rat

Applications Tested: Western blotting (WB), flow cytometry (FCM)

Immunogen

Recombinant protein of human PPP1R8

Isotype

Mouse IgG2b

Storage Buffer

Supplied in PBS (pH 7.4) containing 50% glycerol, and 0.02% sodium azide.

Storage

Store at -20 °C for one year.

Recommended Dilutions

Western Blotting (WB): 1:500-1:2,500

Flow Cytometry (FCM): 1:200-1:2,000

SUPPORT

SUPPORT@GENUINBIOTECH.COM
TEL: +1-540-855-7041

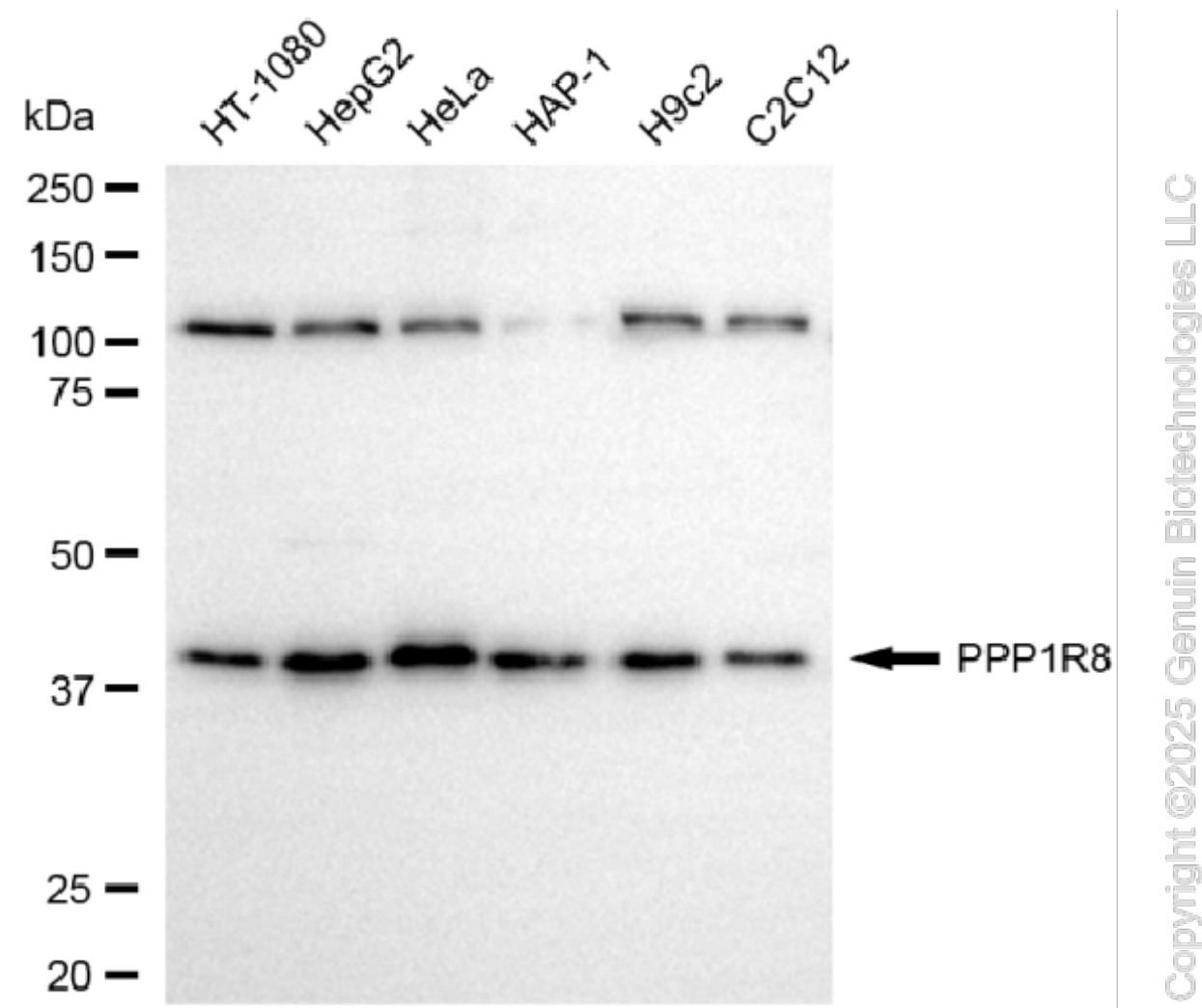
ORDERS

SALES@GENUINBIOTECH.COM
FAX: +1-540-855-7041

WWW.GENUINBIOTECH.COM

Note: This product is for research use only.

Validation Data



Western blotting analysis using anti-PPP1R8 antibody (Cat#5916). Total cell lysates (30 μ g) from various cell lines were loaded and separated by SDS-PAGE. The blot was incubated with anti-PPP1R8 antibody (Cat#5916, 1:2,500) and HRP-conjugated goat anti-mouse secondary antibody (Cat#101, 1:20,000) respectively. Image was developed using FeQ™ ECL Substrate Kit (Cat#226).

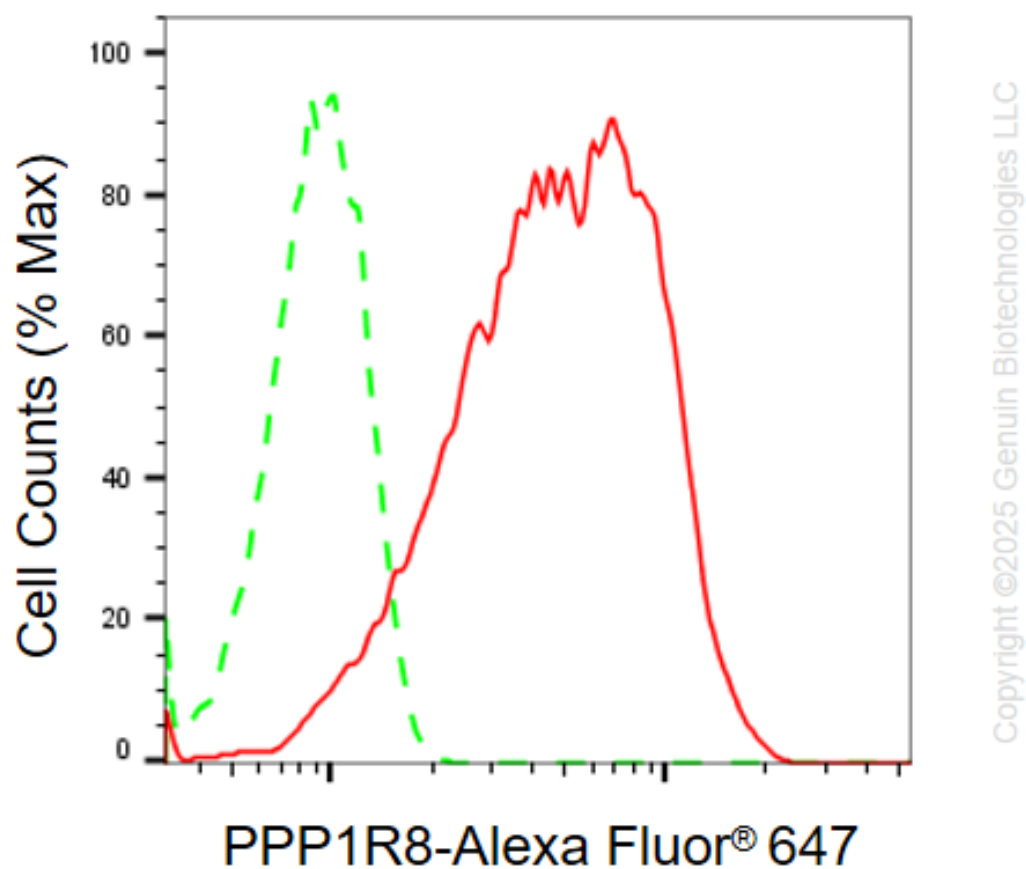
SUPPORT

SUPPORT@GENUINBIOTECH.COM
TEL: +1-540-855-7041

ORDERS

SALES@GENUINBIOTECH.COM
FAX: +1-540-855-7041

WWW.GENUINBIOTECH.COM



Flow cytometric analysis of PPP1R8 expression in HeLa cells using anti-PPP1R8 antibody (Cat#5916, 1:2,000). Green, isotype control; red, PPP1R8.