

Catalog #: 5918

Aliases

SAE1; SUMO1 Activating Enzyme Subunit 1; AOS1; Sua1; Ubiquitin-Like 1-Activating Enzyme E1A; SUMO-Activating Enzyme Subunit 1; FLJ3091; UBLE1A; Ubiquitin-Like Protein SUMO-1 Activating Enzyme; SUMO-1 Activating Enzyme E1 N Subunit; Sentrin/SUMO-Activating Protein AOS1; SUMO-1 Activating Enzyme Subunit 1; Activator Of Sumo 1; Activator Of SUMO1; HSPC140; SUA1

Background

NCBI Gene Entry: [10055](#)

UniProt Entry: [Q9UBE0](#)

Application Information

Molecular Weight: Predicted, 38 kDa; observed, 38 kDa

Clonality: Mouse monoclonal antibody

Clone ID: 25GB5825

Species Reactivity: Human, mouse, rat

Applications Tested: Western blotting (WB), flow cytometry (FCM)

Immunogen

Recombinant protein of human SAE1

Isotype

Mouse IgG1

Storage Buffer

Supplied in PBS (pH 7.4) containing 50% glycerol, and 0.02% sodium azide.

Storage

Store at -20 °C for one year.

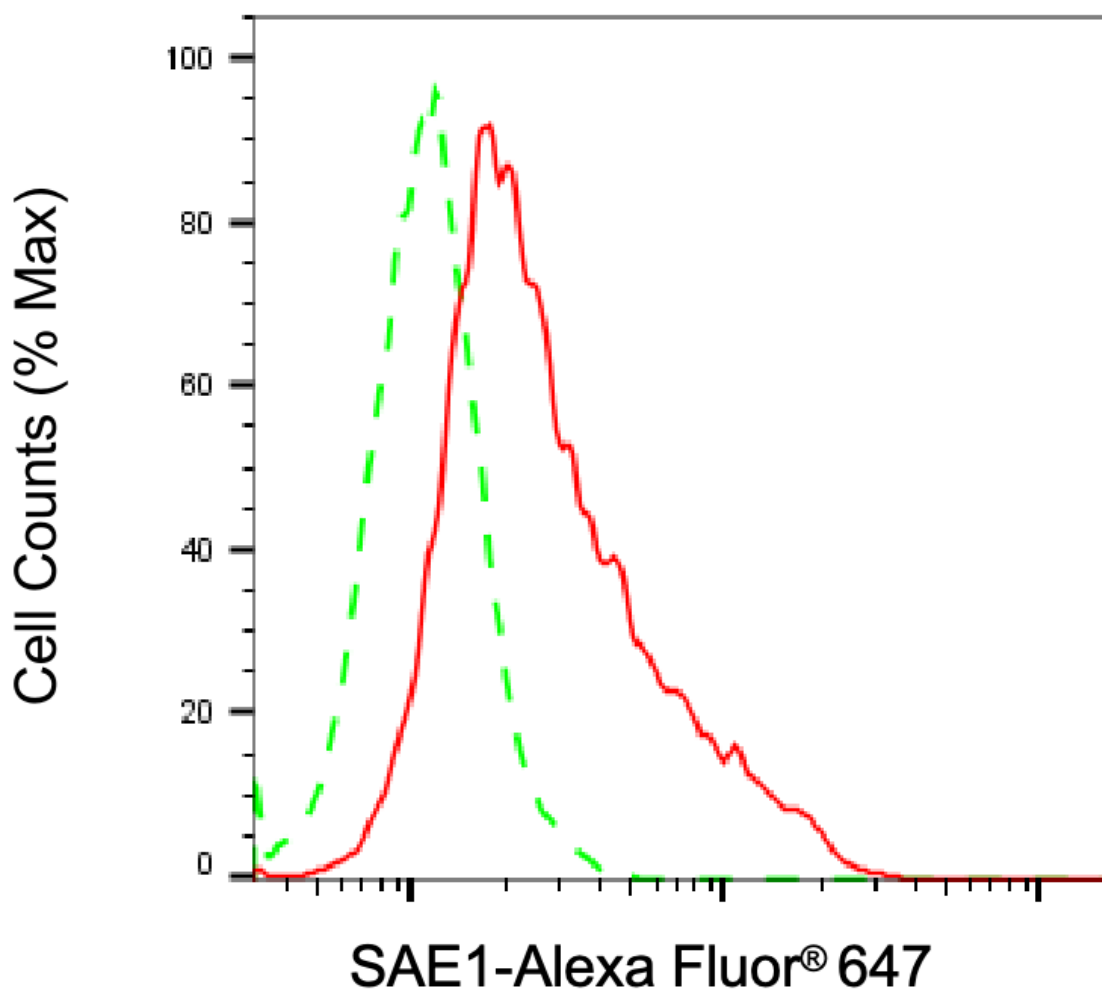
Recommended Dilutions

Western Blotting (WB): 1:500-1:2,500

Flow Cytometry (FCM): 1:200-1:2,000

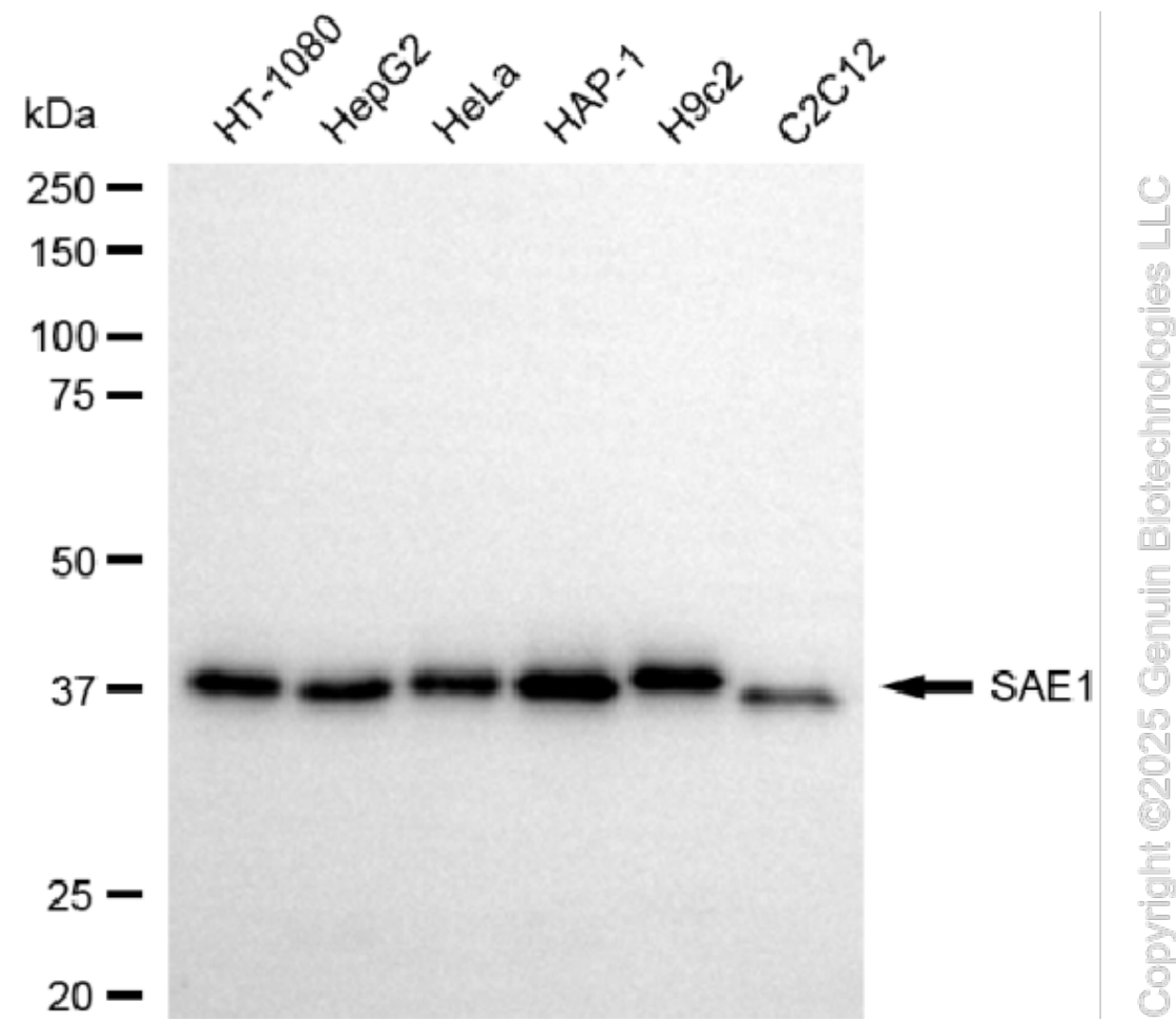
Note: This product is for research use only.

Validation Data



Copyright ©2025 Genuin Biotechnologies LLC

Flow cytometric analysis of SAE1 expression in HAP-1 cells using anti-SAE1 antibody (Cat#5918, 1:2,000). Green, isotype control; red, SAE1.



Western blotting analysis using anti-SAE1 antibody (Cat#5918). Total cell lysates (30 μ g) from various cell lines were loaded and separated by SDS-PAGE. The blot was incubated with anti-SAE1 antibody (Cat#5918, 1:2,500) and HRP-conjugated goat anti-mouse secondary antibody (Cat#101, 1:20,000) respectively. Image was developed using FeQ™ ECL Substrate Kit (Cat#226).