

Catalog #: 5919

Aliases

NKRF; NFkB Repressing Factor; ITBA4; NRF; NF-Kappa-B-Repressing Factor; NF-KappaB Repressing Factor; Transcription Factor NRF; NFkB-Repressing Factor; Protein ITBA4

Background

NCBI Gene Entry: [55922](#)

UniProt Entry: [O15226](#)

Application Information

Molecular Weight: Predicted, 78 kDa; observed, 100 kDa

Clonality: Mouse monoclonal antibody

Clone ID: 25GB5830

Species Reactivity: Human, mouse, rat

Applications Tested: Western blotting (WB), flow cytometry (FCM)

Immunogen

Recombinant protein of human NKRF

Isotype

Mouse IgG2a

Storage Buffer

Supplied in PBS (pH 7.4) containing 50% glycerol, and 0.02% sodium azide.

Storage

Store at -20 °C for one year.

Recommended Dilutions

Western Blotting (WB): 1:400-1:5,000

Flow Cytometry (FCM): 1:200-1:2,000

Note: This product is for research use only.

Validation Data

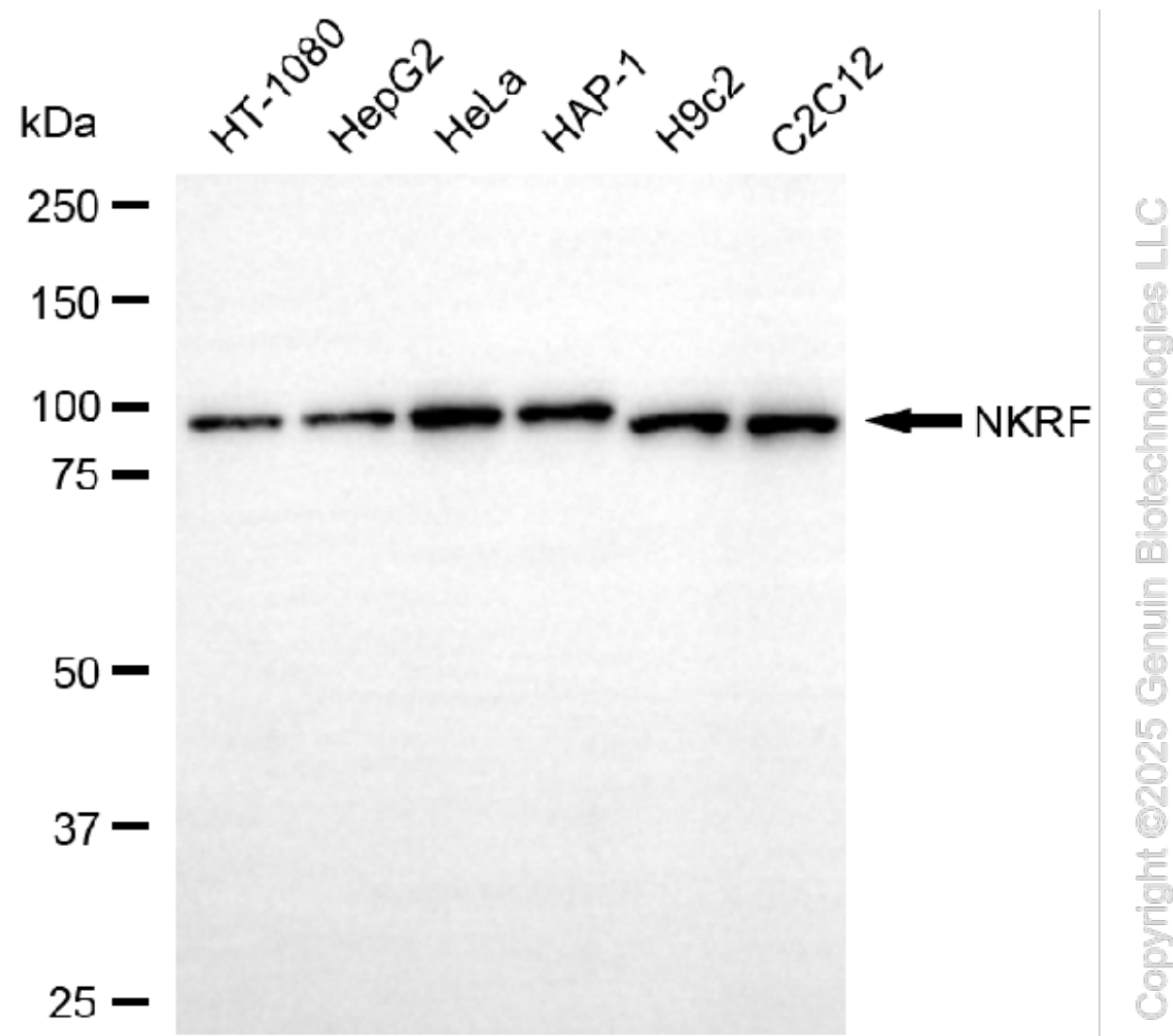
SUPPORT

SUPPORT@GENUINBIOTECH.COM
TEL: +1-540-855-7041

ORDERS

SALES@GENUINBIOTECH.COM
FAX: +1-540-855-7041

WWW.GENUINBIOTECH.COM



Western blotting analysis using anti-NKRF antibody (Cat#5919). Total cell lysates (20 μ g) from various cell lines were loaded and separated by SDS-PAGE. The blot was incubated with anti-NKRF antibody (Cat#5919, 1:5,000) and HRP-conjugated goat anti-mouse secondary antibody (Cat#101, 1:20,000) respectively. Image was developed using NaQ™ ECL Substrate Kit (Cat#716).

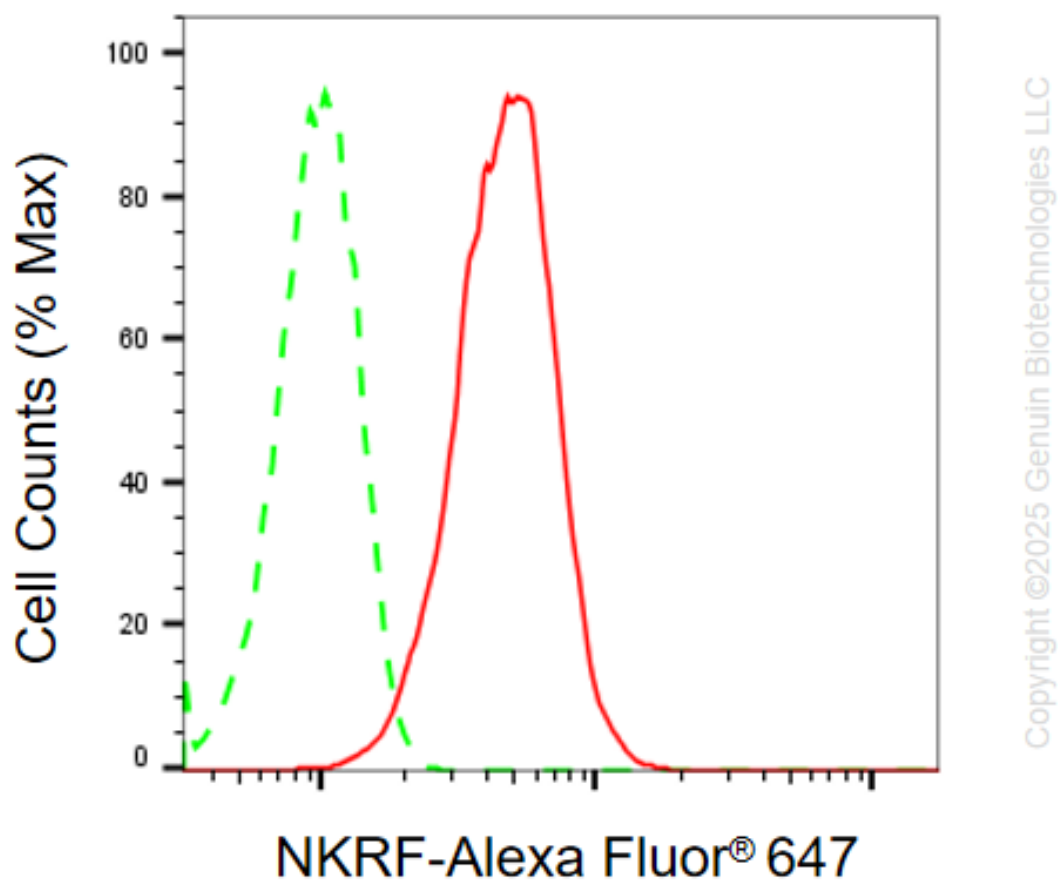
SUPPORT

SUPPORT@GENUINBIOTECH.COM
TEL: +1-540-855-7041

ORDERS

SALES@GENUINBIOTECH.COM
FAX: +1-540-855-7041

WWW.GENUINBIOTECH.COM



Flow cytometric analysis of NKRF expression in C2C12 cells using anti-NKRF antibody (Cat#5919, 1:2,000). Green, isotype control; red, NKRF.