

Catalog #: 5921

Aliases

RPL10; Ribosomal Protein L10; DXS648E; QM; DXS648; UL16; NOV; L10; Large Ribosomal Subunit Protein UL16; 60S Ribosomal Protein L10; Laminin Receptor Homolog; Tumor Suppressor QM; FLJ23544; Wilms Tumor-Related Protein; Protein QM; AUTSX5; MRXS35

Background

NCBI Gene Entry: [6134](#)

UniProt Entry: [P27635](#)

Application Information

Molecular Weight: Predicted, 25 kDa; observed, 25 kDa

Clonality: Mouse monoclonal antibody

Clone ID: 25GB5840

Species Reactivity: Human, mouse, rat

Applications Tested: Western blotting (WB), immunocytochemistry (IC), flow cytometry (FCM)

Immunogen

Recombinant protein of human RPL10

Isotype

Mouse IgG2a

Storage Buffer

Supplied in PBS (pH 7.4) containing 50% glycerol, and 0.02% sodium azide.

Storage

Store at -20 °C for one year.

Recommended Dilutions

Western Blotting (WB): 1:500-1:2,500

Flow Cytometry (FCM): 1:200-1:2,000

Immunocytochemistry (IC): 1:100-1:1,000

Note: This product is for research use only.

Validation Data

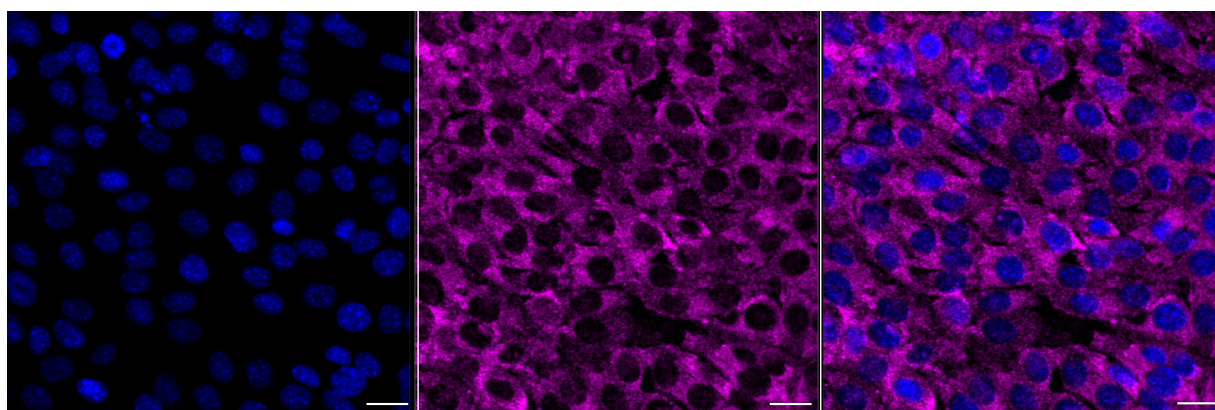
SUPPORT

SUPPORT@GENUINBIOTECH.COM
TEL: +1-540-855-7041

ORDERS

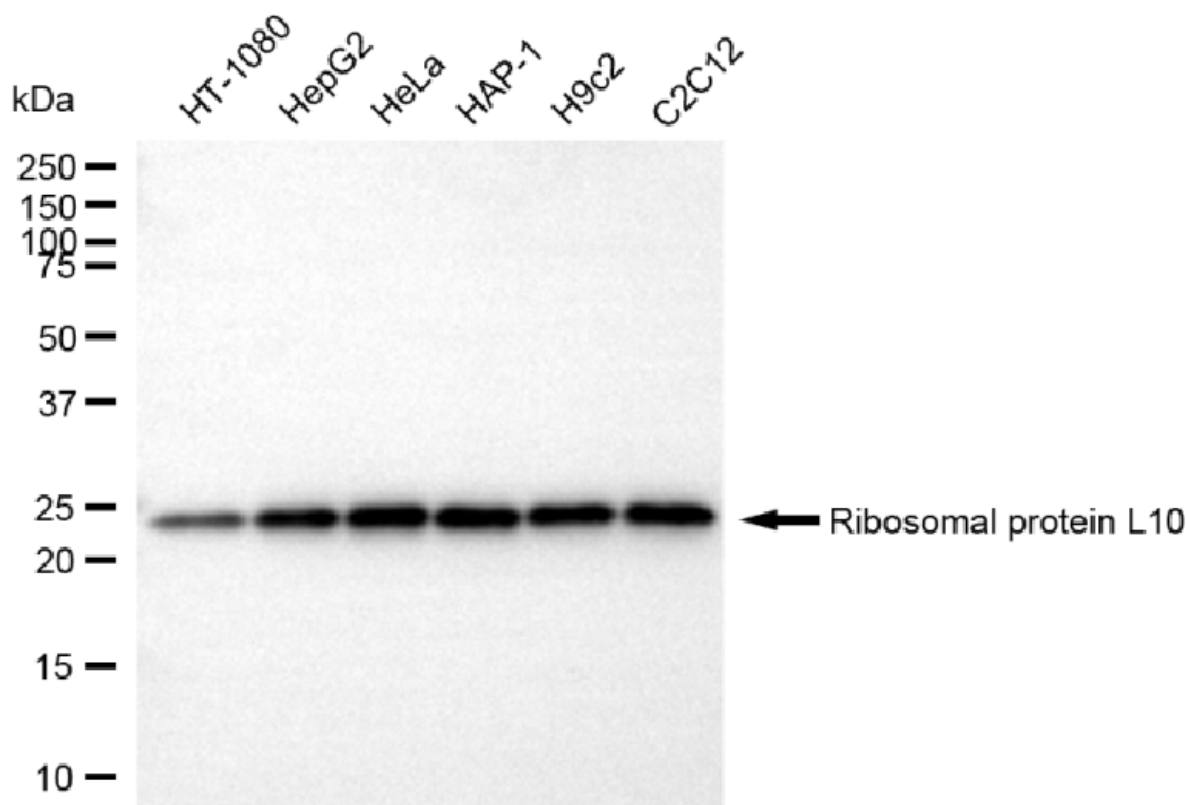
SALES@GENUINBIOTECH.COM
FAX: +1-540-855-7041

WWW.GENUINBIOTECH.COM



Copyright ©2025 Genuin Biotechnologies LLC

Immunocytochemical staining of C2C12 cells with anti-Ribosomal protein L10 antibody (Cat#5921, 1:1,000). Nuclei were stained blue with DAPI; Ribosomal protein L10 was stained magenta with Alexa Fluor® 647. Images were taken using Leica stellaris 5. Protein abundance based on laser Intensity and smart gain: Medium. Scale bar, 20 µm.



Copyright ©2025 Genuin Biotechnologies LLC

Western blotting analysis using anti-ribosomal protein L 10 antibody (Cat#5921). Total cell lysates (30 µg) from various cell lines were loaded and separated by SDS-PAGE. The blot was incubated with anti-ribosomal protein L 10 antibody (Cat#5921, 1:2,500) and HRP-conjugated goat anti-mouse secondary antibody (Cat#101, 1:20,000) respectively. Image was developed using FeQ™ ECL Substrate Kit (Cat#226).

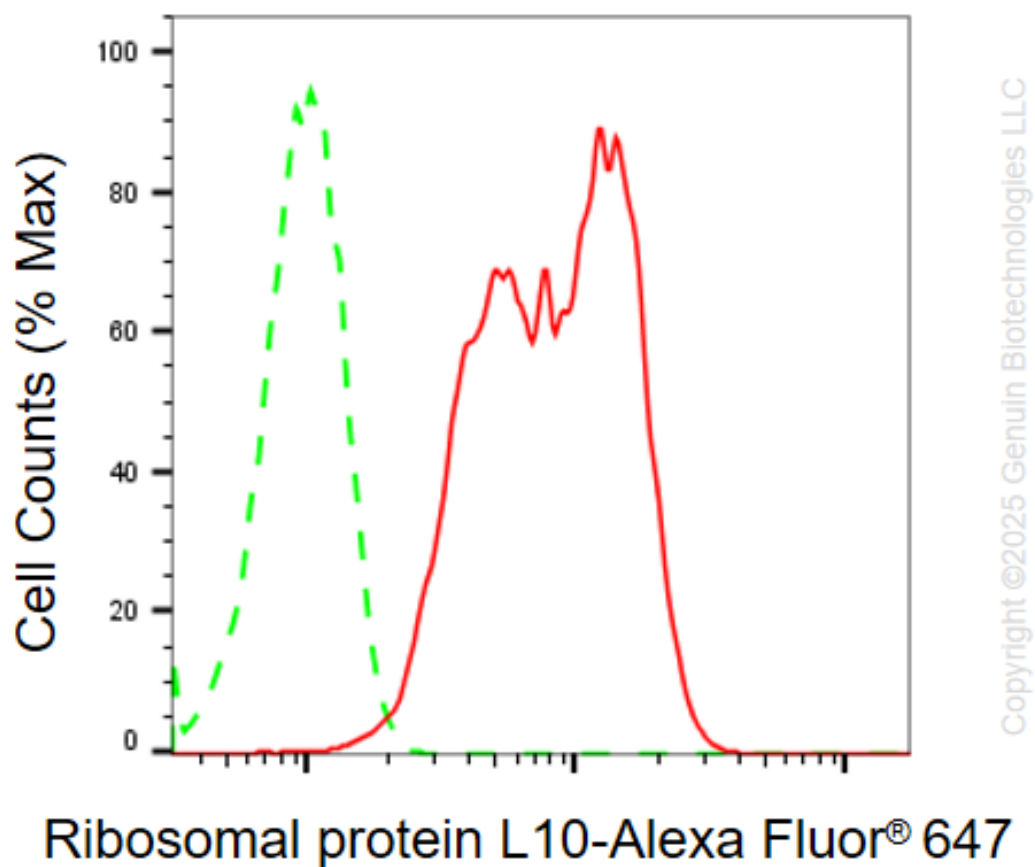
SUPPORT

SUPPORT@GENUINBIOTECH.COM
TEL: +1-540-855-7041

ORDERS

SALES@GENUINBIOTECH.COM
FAX: +1-540-855-7041

WWW.GENUINBIOTECH.COM



Flow cytometric analysis of Ribosomal protein L10 expression in C2C12 cells using anti-Ribosomal protein L10 antibody (Cat#5921, 1:2,000). Green, isotype control; red, Ribosomal protein L10.