

## Catalog #: 5925

### Aliases

SEC23B; SEC23 Homolog B, COPII Coat Complex Component; CDA-II; HEMPAS; CDAIL; Protein Transport Protein Sec23B; SEC23-Related Protein B; HSec23B; CDAN2; Congenital Dyserythropoietic Anemia, Type II; SEC23 Homolog B, Coat Complex II Component; Sec23 (S. Cerevisiae) Homolog B; Sec23 Homolog B (S. Cerevisiae); Transport Protein SEC23B; SEC23-Like Protein B; CWS7

### Background

NCBI Gene Entry: [10483](#)

UniProt Entry: [Q15437](#)

### Application Information

Molecular Weight: Predicted, 86 kDa; observed, 75 kDa

Clonality: Mouse monoclonal antibody

Clone ID: 25GB5860

Species Reactivity: Human, mouse, rat

Applications Tested: Western blotting (WB), flow cytometry (FCM)

### Immunogen

Recombinant protein of human SEC23B

### Isotype

Mouse IgG1

### Storage Buffer

Supplied in PBS (pH 7.4) containing 50% glycerol, and 0.02% sodium azide.

### Storage

Store at -20 °C for one year.

### Recommended Dilutions

Western Blotting (WB): 1:500-1:2,500

Flow Cytometry (FCM): 1:200-1:2,000

**Note:** This product is for research use only.

---

#### SUPPORT

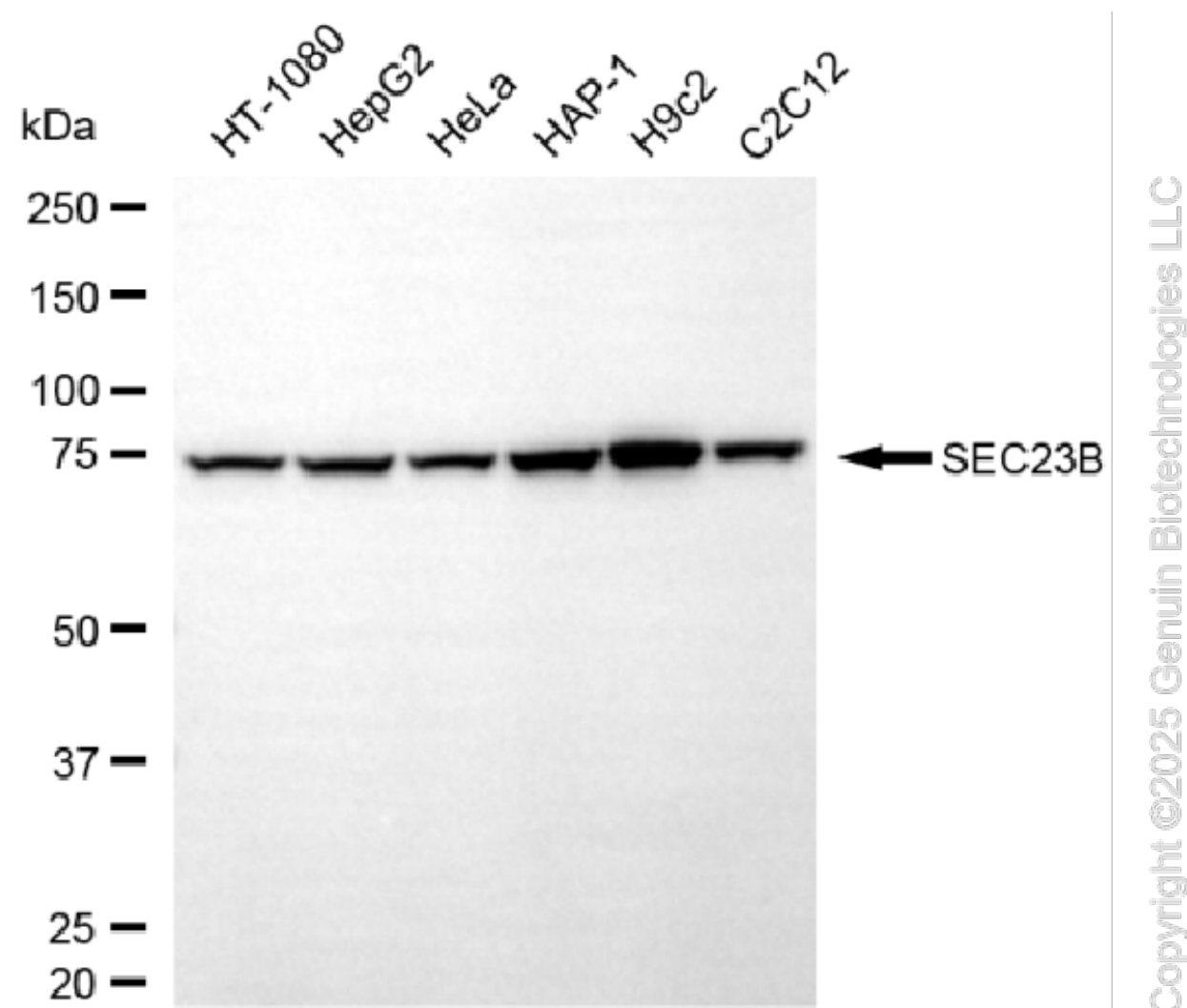
SUPPORT@GENUINBIOTECH.COM  
TEL: +1-540-855-7041

#### ORDERS

SALES@GENUINBIOTECH.COM  
FAX: +1-540-855-7041

[WWW.GENUINBIOTECH.COM](http://WWW.GENUINBIOTECH.COM)

## Validation Data



Western blotting analysis using anti-SEC23B antibody (Cat#5925). Total cell lysates (30 µg) from various cell lines were loaded and separated by SDS-PAGE. The blot was incubated with anti-SEC23B antibody (Cat#5925, 1:2,500) and HRP-conjugated goat anti-mouse secondary antibody (Cat#101, 1:20,000) respectively. Image was developed using NaQ™ ECL Substrate Kit (Cat#716).

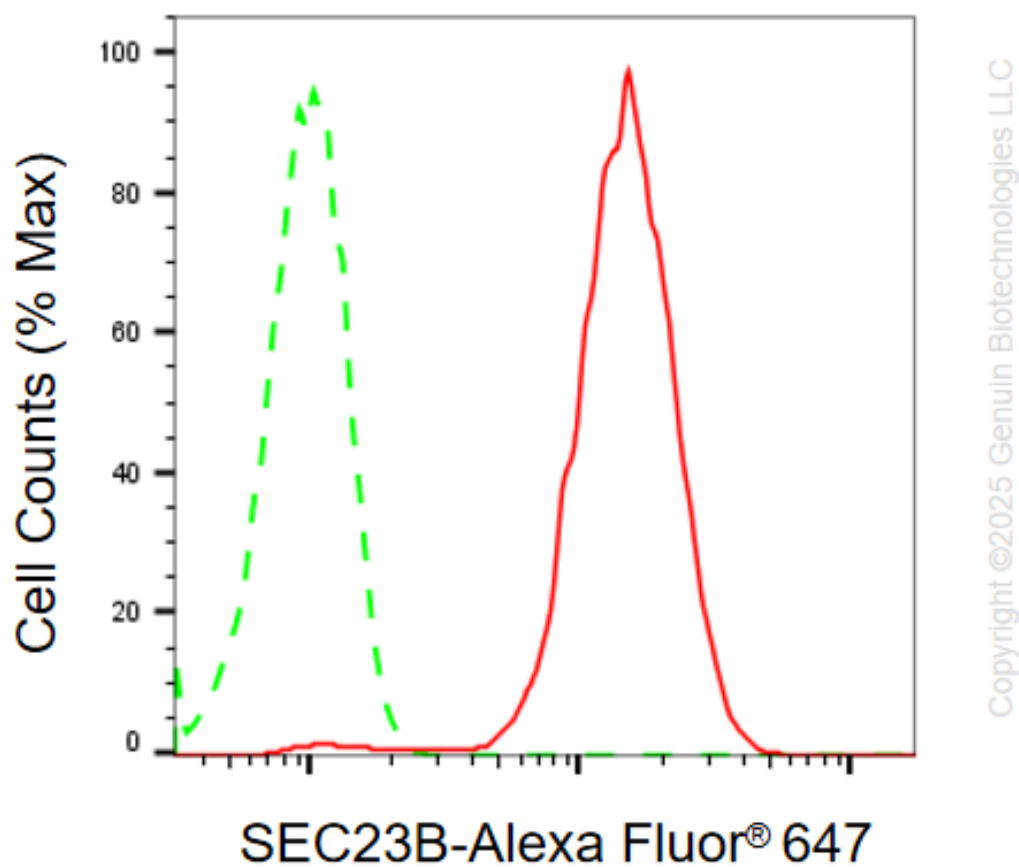
## SUPPORT

SUPPORT@GENUINBIOTECH.COM  
TEL: +1-540-855-7041

## ORDERS

SALES@GENUINBIOTECH.COM  
FAX: +1-540-855-7041

WWW.GENUINBIOTECH.COM



Flow cytometric analysis of SEC23B expression in C2C12 cells using anti-SEC23B antibody (Cat#5925, 1:2,000). Green, isotype control; red, SEC23B.