

## Catalog #: 5926

### Aliases

PMS1; PMS1 Homolog 1, Mismatch Repair System Component; PMSL1; MLH2; DNA Mismatch Repair Protein PMS1; PMS1 Protein Homolog 1; PMS1 Postmeiotic Segregation Increased 1 (S. Cerevisiae); Postmeiotic Segregation Increased (S. Cerevisiae) 1; PMS1 Postmeiotic Segregation Increased 1; Rhabdomyosarcoma Antigen MU-RMS-40.10B; Rhabdomyosarcoma Antigen MU-RMS-40.10E; Human Homolog Of Yeast MutL; Mismatch Repair Gene PMSL1; HNPCC3; HPMS1

### Background

NCBI Gene Entry: [5378](#)

UniProt Entry: [P54277](#)

### Application Information

Molecular Weight: Predicted, 106 kDa; observed, 115 kDa

Clonality: Mouse monoclonal antibody

Clone ID: 25GB5865

Species Reactivity: Human

Applications Tested: Western blotting (WB)

### Immunogen

Recombinant protein of human PMS1

### Isotype

Mouse IgG1

### Storage Buffer

Supplied in PBS (pH 7.4) containing 50% glycerol, and 0.02% sodium azide.

### Storage

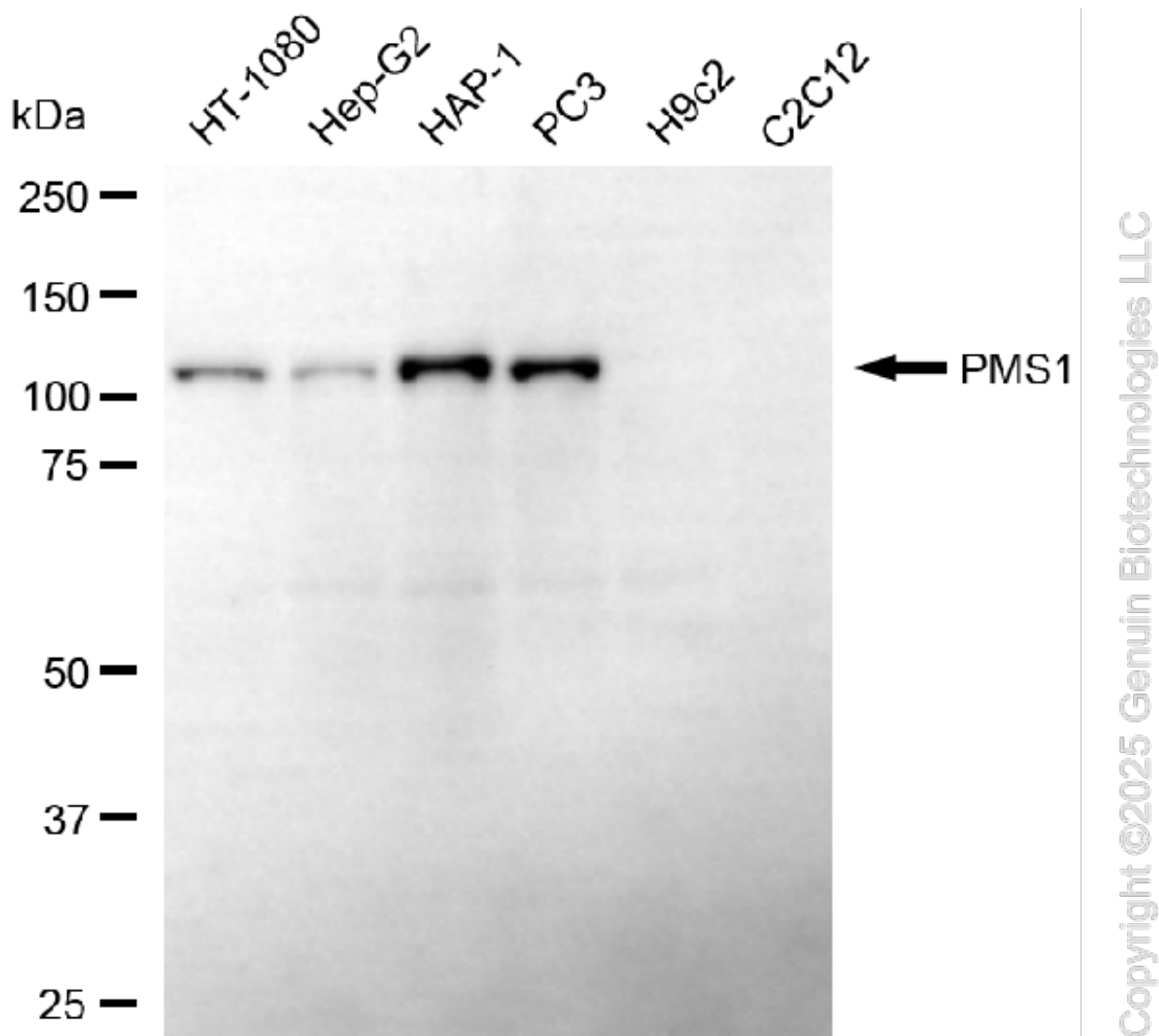
Store at -20 °C for one year.

### Recommended Dilutions

Western Blotting (WB): 1:200-1:1,000

**Note:** This product is for research use only.

## Validation Data



Western blotting analysis using anti-PMS1 antibody (Cat#5926). Total cell lysates (30  $\mu$ g) from various cell lines were loaded and separated by SDS-PAGE. The blot was incubated with anti-PMS1 antibody (Cat#5926, 1:1,000) and HRP-conjugated goat anti-mouse secondary antibody (Cat#101, 1:20,000) respectively. Image was developed using FeQ™ ECL Substrate Kit (Cat#226).

## SUPPORT

SUPPORT@GENUINBIOTECH.COM  
TEL: +1-540-855-7041

## ORDERS

SALES@GENUINBIOTECH.COM  
FAX: +1-540-855-7041

WWW.GENUINBIOTECH.COM