

## Catalog #: 5929

### Aliases

PYGM; Glycogen Phosphorylase, Muscle Associated; Glycogen Phosphorylase, Muscle Form; Myophosphorylase; GSD5; EC 2.4.1.1; Glycogen Storage Disease Type V; Phosphorylase, Glycogen; Muscle; Phosphorylase, Glycogen, Muscle; McArdle Syndrome

### Background

NCBI Gene Entry: [5837](#)

UniProt Entry: [P11217](#)

### Application Information

Molecular Weight: Predicted, 97 kDa; observed, 95 kDa

Clonality: Mouse monoclonal antibody

Clone ID: 25GB5880

Species Reactivity: Human, mouse, rat

Applications Tested: Western blotting (WB), flow cytometry (FCM)

### Immunogen

Recombinant protein of human PYGM

### Isotype

Mouse IgG1

### Storage Buffer

Supplied in PBS (pH 7.4) containing 50% glycerol, and 0.02% sodium azide.

### Storage

Store at -20 °C for one year.

### Recommended Dilutions

Western Blotting (WB): 1:500-1:2,500

Flow Cytometry (FCM): 1:200-1:2,000

**Note:** This product is for research use only.

### Validation Data

---

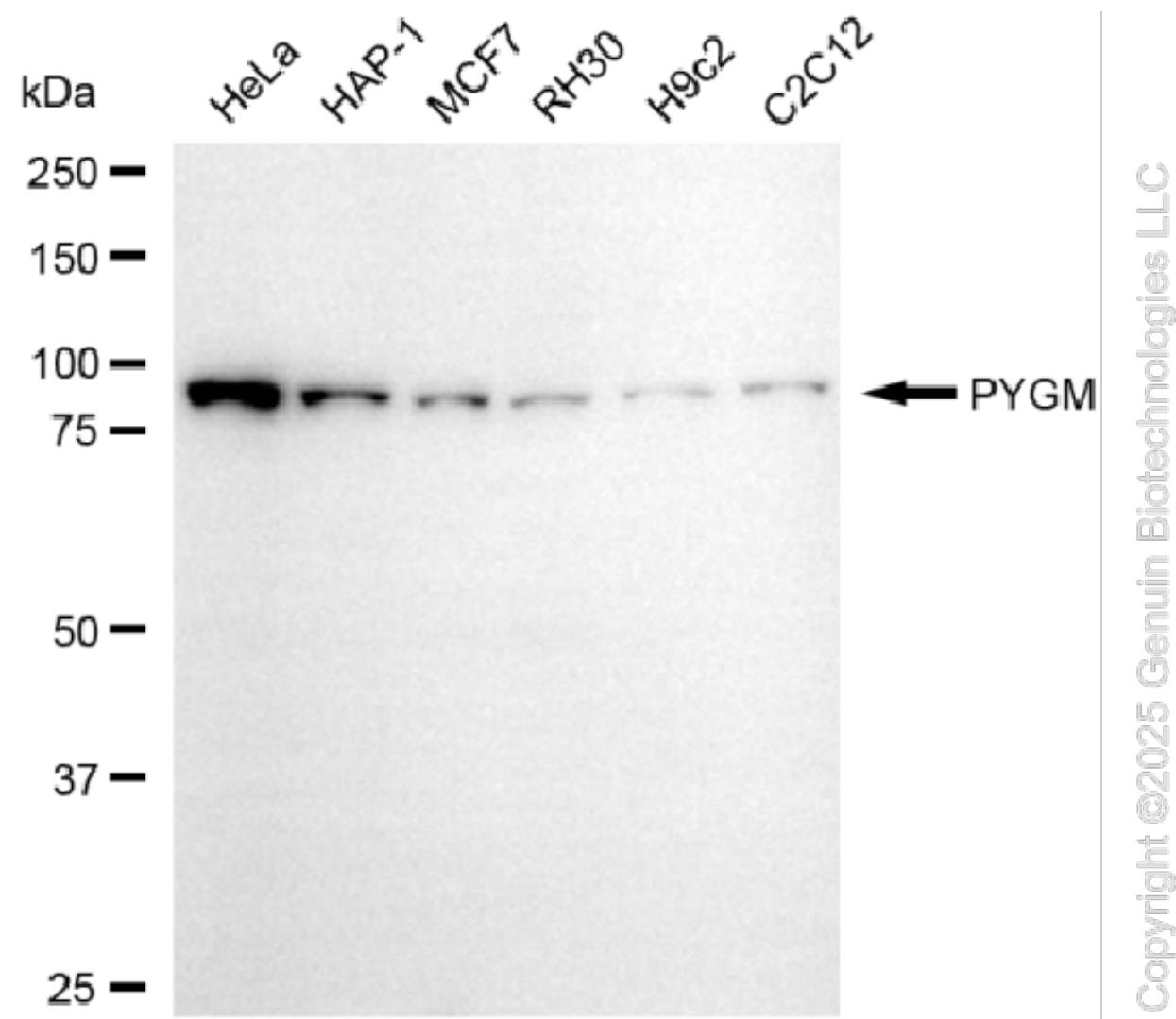
#### SUPPORT

SUPPORT@GENUINBIOTECH.COM  
TEL: +1-540-855-7041

#### ORDERS

SALES@GENUINBIOTECH.COM  
FAX: +1-540-855-7041

[WWW.GENUINBIOTECH.COM](http://WWW.GENUINBIOTECH.COM)



Western blotting analysis using anti-PYGM antibody (Cat#5929). Total cell lysates (30  $\mu$ g) from various cell lines were loaded and separated by SDS-PAGE. The blot was incubated with anti-PYGM antibody (Cat#5929, 1:2,500) and HRP-conjugated goat anti-mouse secondary antibody (Cat#101, 1:20,000) respectively. Image was developed using FeQ™ ECL Substrate Kit (Cat#226).

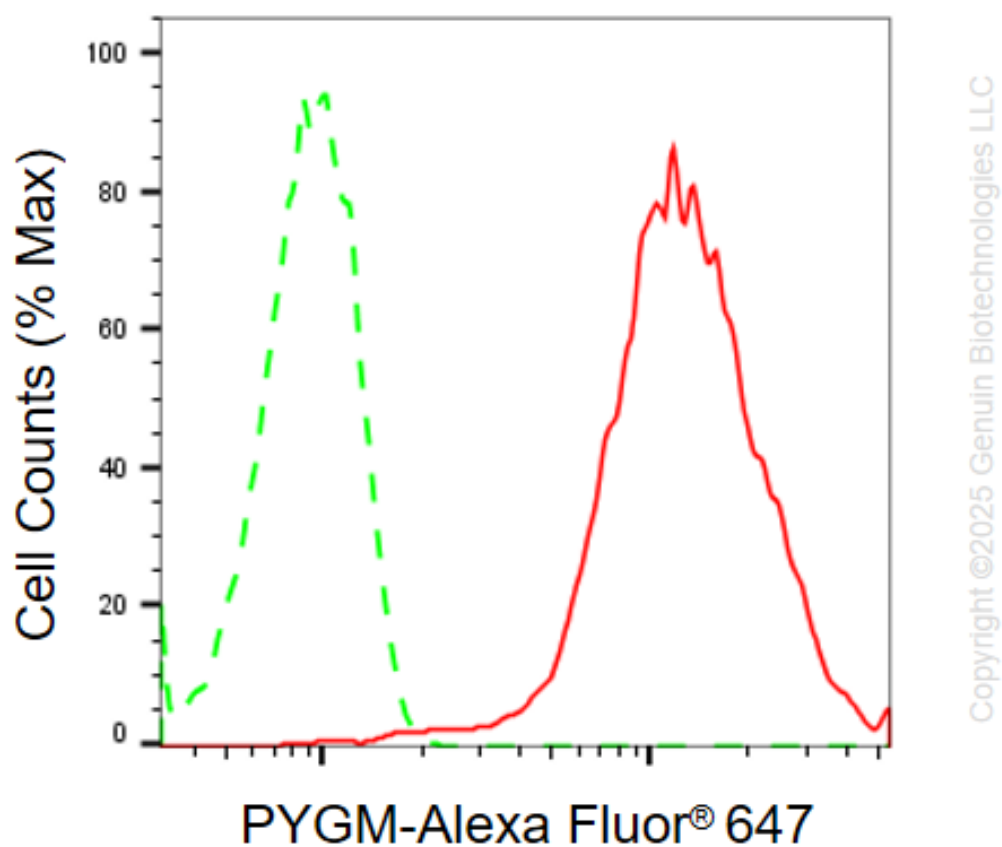
**SUPPORT**

SUPPORT@GENUINBIOTECH.COM  
TEL: +1-540-855-7041

**ORDERS**

SALES@GENUINBIOTECH.COM  
FAX: +1-540-855-7041

[WWW.GENUINBIOTECH.COM](http://WWW.GENUINBIOTECH.COM)



Flow cytometric analysis of PYGM expression in HeLa cells using anti-PYGM antibody (Cat#5929, 1:2,000). Green, isotype control; red, PYGM.

**SUPPORT**

SUPPORT@GENUINBIOTECH.COM  
TEL: +1-540-855-7041

**ORDERS**

SALES@GENUINBIOTECH.COM  
FAX: +1-540-855-7041

**WWW.GENUINBIOTECH.COM**