

Catalog #: 5935

Aliases

ITM2A; Integral Membrane Protein 2A; BRICD2A; E25A; BRICHOS Domain Containing 2A; Protein E25

Background

NCBI Gene Entry: [9452](#)

UniProt Entry: [O43736](#)

Application Information

Molecular Weight: Predicted, 30 kDa; observed, 37 kDa

Clonality: Mouse monoclonal antibody

Clone ID: 25GB5910

Species Reactivity: Human

Applications Tested: Western blotting (WB), flow cytometry (FCM)

Immunogen

Recombinant protein of human ITM2A

Isotype

Mouse IgG2b

Storage Buffer

Supplied in PBS (pH 7.4) containing 50% glycerol, and 0.02% sodium azide.

Storage

Store at -20 °C for one year.

Recommended Dilutions

Western Blotting (WB): 1:500-1:2,500

Flow Cytometry (FCM): 1:200-1:2,000

Note: This product is for research use only.

Validation Data

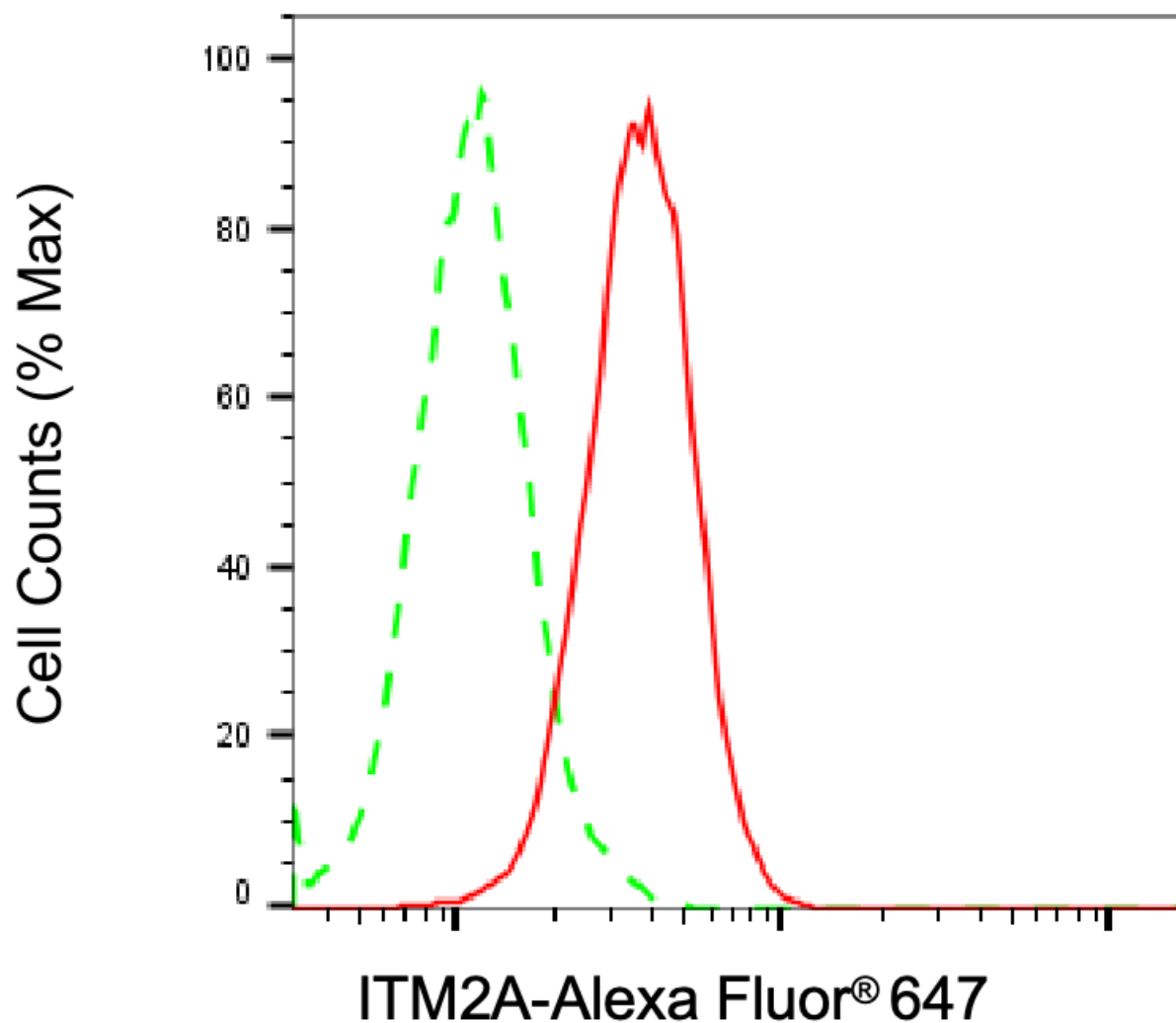
SUPPORT

SUPPORT@GENUINBIOTECH.COM
TEL: +1-540-855-7041

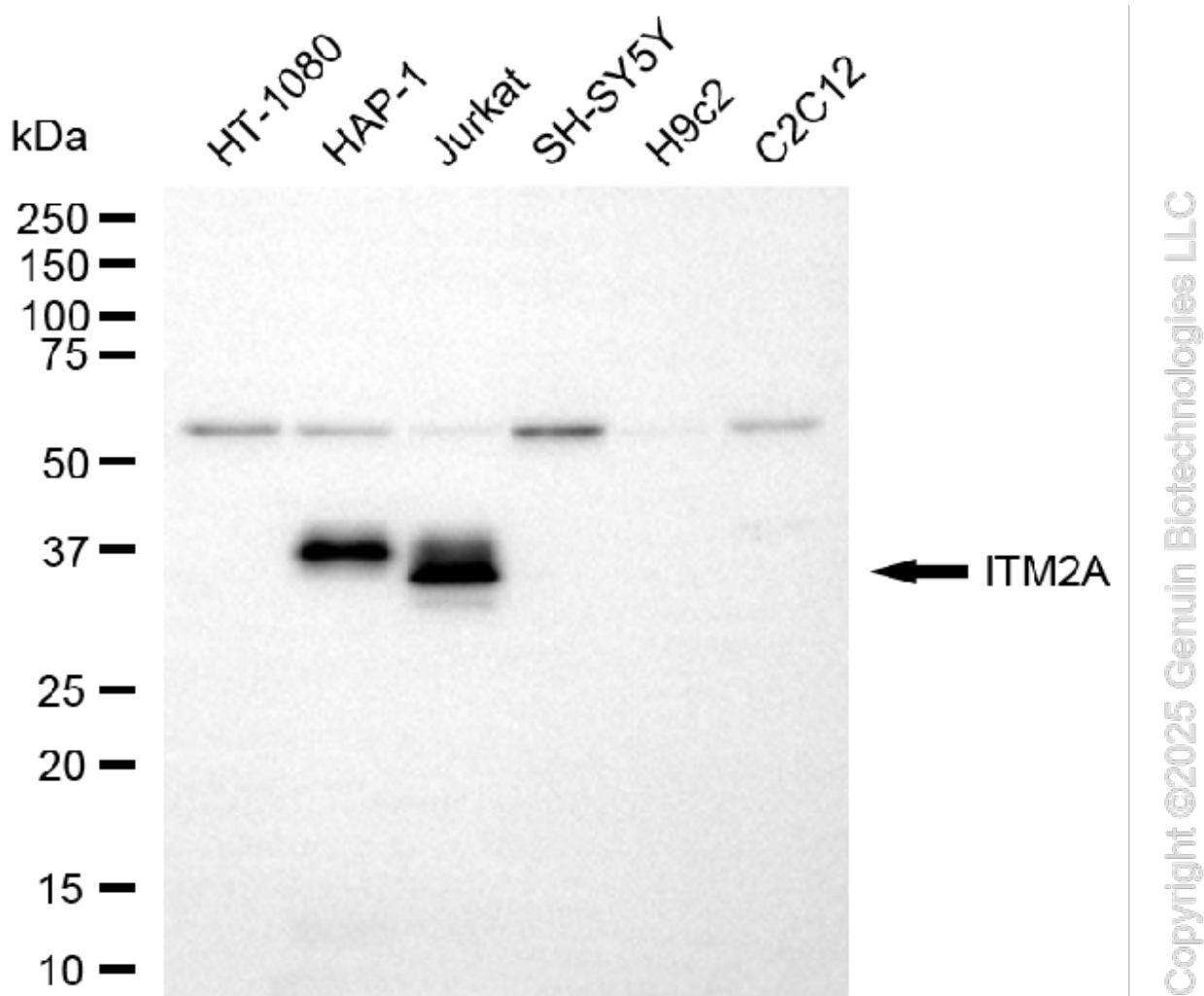
ORDERS

SALES@GENUINBIOTECH.COM
FAX: +1-540-855-7041

WWW.GENUINBIOTECH.COM



Flow cytometric analysis of ITM2A expression in HAP-1 cells using anti-ITM2A antibody (Cat#5935, 1:2,000). Green, isotype control; red, ITM2A.



Western blotting analysis using anti-ITM2A antibody (Cat#5935). Total cell lysates (30 μ g) from various cell lines were loaded and separated by SDS-PAGE. The blot was incubated with anti-ITM2A antibody (Cat#5935, 1:2,500) and HRP-conjugated goat anti-mouse secondary antibody (Cat#101, 1:20,000) respectively. Image was developed using FeQ™ ECL Substrate Kit (Cat#226).

SUPPORT

SUPPORT@GENUINBIOTECH.COM
TEL: +1-540-855-7041

ORDERS

SALES@GENUINBIOTECH.COM
FAX: +1-540-855-7041

WWW.GENUINBIOTECH.COM