

# Anti-CD2 Molecule Mouse Monoclonal Antibody



**Catalog #: 5937**

## Aliases

CD2; CD2 Molecule; SRBC; CD2 Antigen (P50), Sheep Red Blood Cell Receptor; T-Cell Surface Antigen T11/Leu-5; T-Cell Surface Antigen CD2; Erythrocyte Receptor; Rosette Receptor; LFA-3 Receptor; LFA-2; Lymphocyte-Function Antigen-2; CD2 Antigen; T11

## Background

Gene Name: CD2

NCBI Gene Entry: [914](#)

UniProt Entry: [P06729](#)

## Application Information

Molecular Weight: Predicted, 39 kDa, observed, 45-58 kDa

Clonality: Mouse monoclonal antibody

Clone ID: 25GB5030

Species Reactivity: Human

Applications Tested: Western blotting (WB)

## Immunogen

Recombinant protein of human CD2

## Isotype

Mouse IgG1

## Storage Buffer

Supplied in PBS (pH 7.4) containing 50% glycerol, and 0.02% sodium azide.

## Storage

Store at -20 °C for one year.

## Recommended Dilutions

Western Blotting (WB): 1:500-1:2,500

**Note:** This product is for research use only.

## Validation Data

---

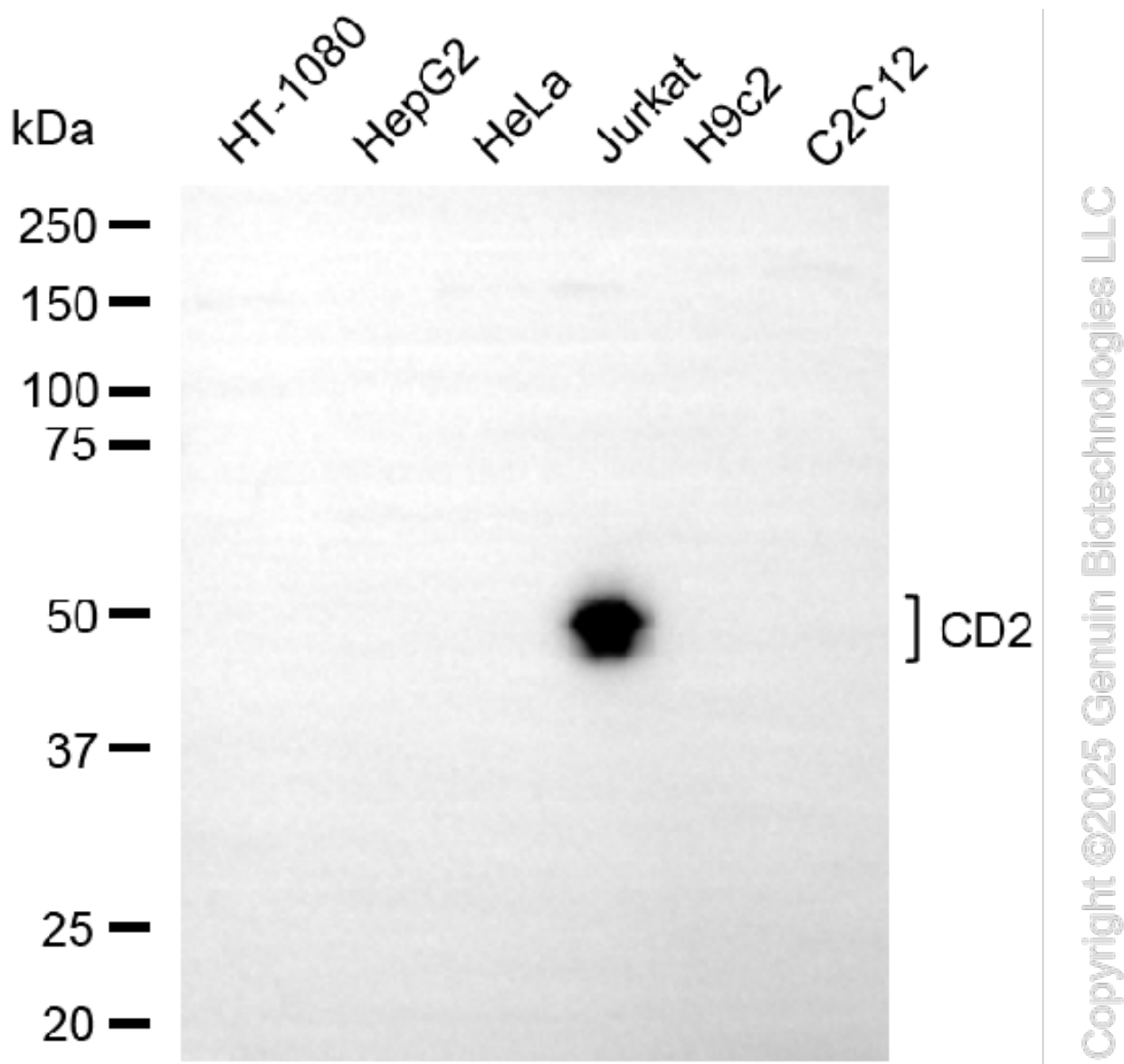
### SUPPORT

SUPPORT@GENUINBIOTECH.COM  
TEL: +1-540-855-7041

### ORDERS

SALES@GENUINBIOTECH.COM  
FAX: +1-540-855-7041

[WWW.GENUINBIOTECH.COM](http://WWW.GENUINBIOTECH.COM)



Western blotting analysis using anti-CD2 antibody (Cat#5937). Total cell lysates (30 µg) from various cell lines were loaded and separated by SDS-PAGE. The blot was incubated with anti-CD2 antibody (Cat#5937, 1:2,500) and HRP-conjugated goat anti-mouse secondary antibody (Cat#101, 1:20,000) respectively. Image was developed using FeQ™ ECL Substrate Kit (Cat#226).