

Anti-Phospho-KIF22 (S427) Recombinant Rabbit Monoclonal Antibody



Catalog #: 5938

Aliases

KIF22; Kinesin Family Member 22; OBP-1; OBP-2; KNSL4; Kid; Kinesin-Like Protein KIF22; Kinesin-Like Protein 4; Origin Of Plasmid DNA Replication-Binding Protein; Kinesin-Like DNA-Binding Protein Pseudogene; Kinesin-Like DNA-Binding Protein; OriP Binding Protein; Kinesin-Like 4; A-328A3.2; SEMDJL2; OBP; KID

Background

Gene Name: KIF22

NCBI Gene Entry: [3835](#)

UniProt Entry: [Q14807](#)

Application Information

Molecular Weight: Predicted, 73 kDa; observed, 73 kDa

Clonality: Rabbit monoclonal antibody

Clone ID: 25GB5960

Species Reactivity: Human

Applications Tested: Western blotting (WB)

Immunogen

A synthesized peptide derived from human KIF22 around the phosphorylation site of S427

Isotype

Rabbit IgG

Storage Buffer

Supplied in PBS (pH 7.4) containing 50% glycerol, and 0.02% sodium azide.

Storage

Store at -20 °C for one year.

Recommended Dilutions

Western Blotting (WB): 1:1,000-1:5,000

Note: This product is for research use only.

Validation Data

SUPPORT

SUPPORT@GENUINBIOTECH.COM
TEL: +1-540-855-7041

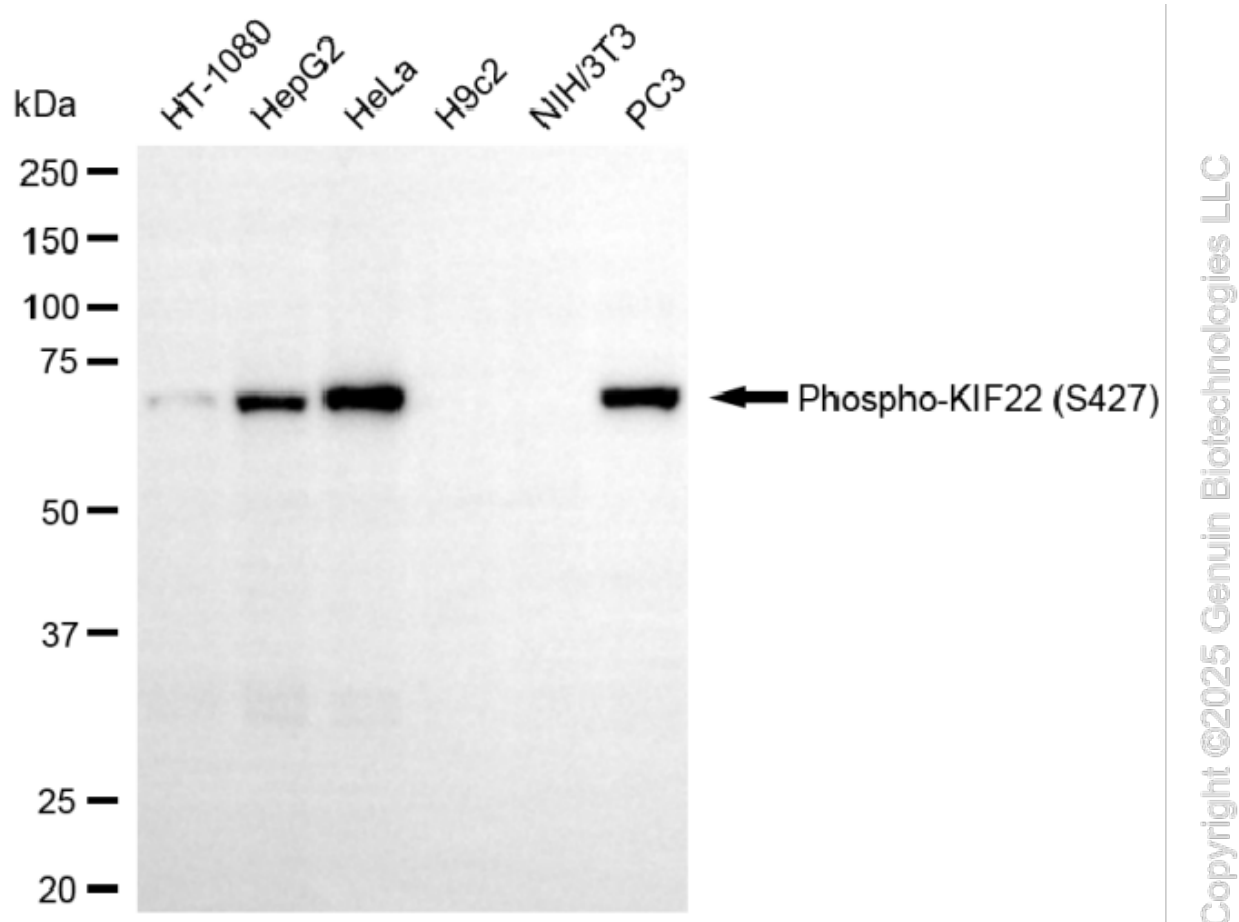
ORDERS

SALES@GENUINBIOTECH.COM
FAX: +1-540-855-7041

WWW.GENUINBIOTECH.COM

Anti-Phospho-KIF22 (S427) Recombinant Rabbit Monoclonal Antibody

PAGE 2



Western blotting analysis using anti-phospho-KIF22 (S427) antibody (Cat#5938). Total cell lysates (30 µg) from various cell lines were loaded and separated by SDS-PAGE. The blot was incubated with anti-phospho-KIF22 (S427) antibody (Cat#5938, 1:5,000) and HRP-conjugated goat anti-rabbit secondary antibody (Cat#201, 1:20,000) respectively. Image was developed using NaQ™ ECL Substrate Kit (Cat#716).

SUPPORT

SUPPORT@GENUINBIOTECH.COM
TEL: +1-540-855-7041

ORDERS

SALES@GENUINBIOTECH.COM
FAX: +1-540-855-7041

WWW.GENUINBIOTECH.COM