

## Catalog #: 5945

## Aliases

KPNA1; Karyopherin Subunit Alpha 1; NPI-1; RCH2; IPOA5; SRP1; Karyopherin Alpha 1 (Importin Alpha 5); Nucleoprotein Interactor 1; Importin Subunit Alpha-5; RAG Cohort Protein 2; Importin Alpha 5; SRP1-Beta; Recombination Activating Gene Cohort; Karyopherin Subunit Alpha-1; Importin Subunit Alpha-1; Karyopherin Alpha 1; Importin-Alpha-S1

## Background

Gene Name: KPNA1

NCBI Gene Entry: [3836](#)

UniProt Entry: [P52294](#)

## Application Information

Molecular Weight: Predicted, 60 kDa; observed, 60 kDa

Clonality: Mouse monoclonal antibody

Clone ID: 25GB6030

Species Reactivity: Human, mouse, rat

Applications Tested: Western blotting (WB)

## Immunogen

Recombinant protein of human KPNA1

## Isotype

Mouse IgG1

## Storage Buffer

Supplied in PBS (pH 7.4) containing 50% glycerol, and 0.02% sodium azide.

## Storage

Store at -20 °C for one year.

## Recommended Dilutions

Western Blotting (WB): 1:400-1:2,000

**Note:** This product is for research use only.

## Validation Data

---

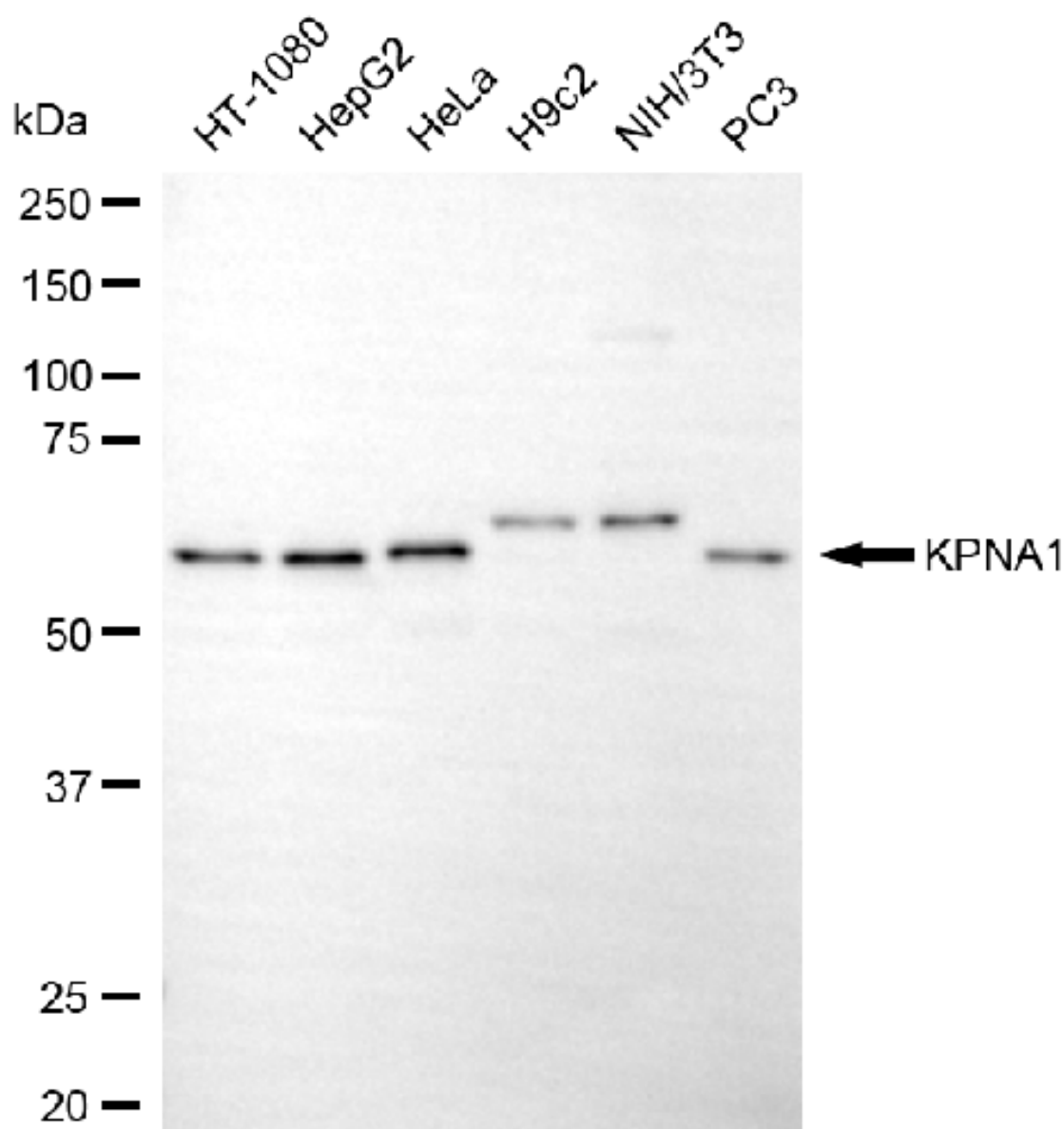
### SUPPORT

SUPPORT@GENUINBIOTECH.COM  
TEL: +1-540-855-7041

### ORDERS

SALES@GENUINBIOTECH.COM  
FAX: +1-540-855-7041

[WWW.GENUINBIOTECH.COM](http://WWW.GENUINBIOTECH.COM)



Copyright ©2025 Genuin Biotechnologies LLC

Western blotting analysis using anti-KPNA1 antibody (Cat#5945). Total cell lysates (30  $\mu$ g) from various cell lines were loaded and separated by SDS-PAGE. The blot was incubated with anti-KPNA1 antibody (Cat#5945, 1:2,000) and HRP-conjugated goat anti-mouse secondary antibody (Cat#101, 1:20,000) respectively. Image was developed using NaQ™ ECL Substrate Kit (Cat#716).

**SUPPORT**

SUPPORT@GENUINBIOTECH.COM  
TEL: +1-540-855-7041

**ORDERS**

SALES@GENUINBIOTECH.COM  
FAX: +1-540-855-7041

[WWW.GENUINBIOTECH.COM](http://WWW.GENUINBIOTECH.COM)