

Catalog #: 5983

Aliases

CANT1; Calcium Activated Nucleotidase 1; SCAN-1; SHAPY; Soluble Ca-Activated Nucleotidase, Isozyme 1; Putative NF-Kappa-B-Activating Protein 107; Soluble Calcium-Activated Nucleotidase 1; Putative MAPK-Activating Protein PM09; Apyrase 1 Homolog (C. Lectularius); Apyrase Homolog; Micromelic Dwarfism With Vertebral And Metaphyseal Abnormalities And Advanced Carpotarsal Ossification; Ca²⁺-Dependent Endoplasmic Reticulum Nucleoside Diphosphatase; Soluble Calcium-Activated Nucleotidase SCAN-1; EC 3.6.1.6; DBQD1; SCAN1; DBQD; EDM7

Background

Gene Name: CANT1

NCBI Gene Entry: [124583](#)

UniProt Entry: [Q8WVQ1](#)

Application Information

Molecular Weight: Predicted, 45 kDa; observed, 36-40 kDa

Clonality: Mouse oligoclonal antibody

Species Reactivity: Human, mouse

Applications Tested: Western blotting (WB)

Immunogen

Recombinant protein of human CANT1

Isotype

Mouse IgG

Storage Buffer

Supplied in PBS (pH 7.4) containing 50% glycerol, and 0.02% sodium azide.

Storage

Store at -20 °C for one year.

Recommended Dilutions

Western Blotting (WB): 1:500-1:2,500

SUPPORT

SUPPORT@GENUINBIOTECH.COM
TEL: +1-540-855-7041

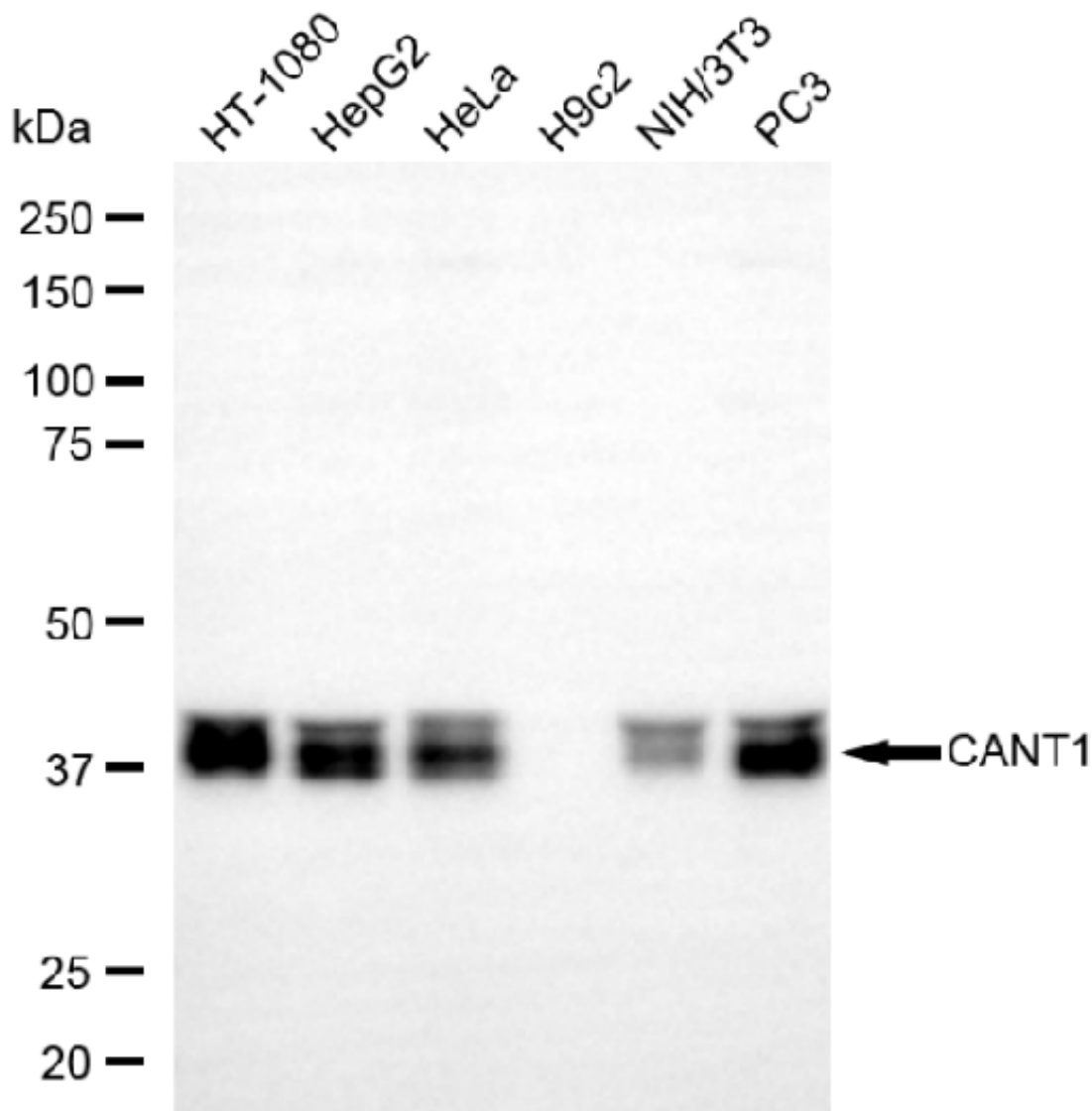
ORDERS

SALES@GENUINBIOTECH.COM
FAX: +1-540-855-7041

WWW.GENUINBIOTECH.COM

Note: This product is for research use only.

Validation Data



Copyright ©2025 Genuin Biotechnologies LLC

Western blotting analysis using anti-CANT1 antibody (Cat#5983). Total cell lysates (30 µg) from various cell lines were loaded and separated by SDS-PAGE. The blot was incubated with anti-CANT1 antibody (Cat#5983, 1:2,500) and HRP-conjugated goat anti-mouse secondary antibody (Cat#101, 1:20,000) respectively. Image was developed using NaQ™ ECL Substrate Kit (Cat#716).

SUPPORT

SUPPORT@GENUINBIOTECH.COM
TEL: +1-540-855-7041

ORDERS

SALES@GENUINBIOTECH.COM
FAX: +1-540-855-7041

WWW.GENUINBIOTECH.COM