

**Catalog #: 5985**

## Aliases

TTLL12; Tubulin Tyrosine Ligase Like 12; KIAA0153; Inactive Tubulin--Tyrosine Ligase-Like Protein 12; Tubulin--Tyrosine Ligase-Like Protein 12; Tubulin Tyrosine Ligase-Like Family, Member 12; Tubulin Tyrosine Ligase-Like Family Member 12; DJ526I14.2

## Background

Gene Name: TTLL12

NCBI Gene Entry: [23170](#)

UniProt Entry: [Q14166](#)

## Application Information

Molecular Weight: Predicted, 74 kDa; observed, 72-74 kDa

Clonality: Mouse monoclonal antibody

Clone ID: 25GB6245

Species Reactivity: Human, mouse, rat

Applications Tested: Western blotting (WB)

## Immunogen

Recombinant protein of human TTLL12

## Isotype

Mouse IgG2a

## Storage Buffer

Supplied in PBS (pH 7.4) containing 50% glycerol, and 0.02% sodium azide.

## Storage

Store at -20 °C for one year.

## Recommended Dilutions

Western Blotting (WB): 1:500-1:2,500

**Note:** This product is for research use only.

## Validation Data

---

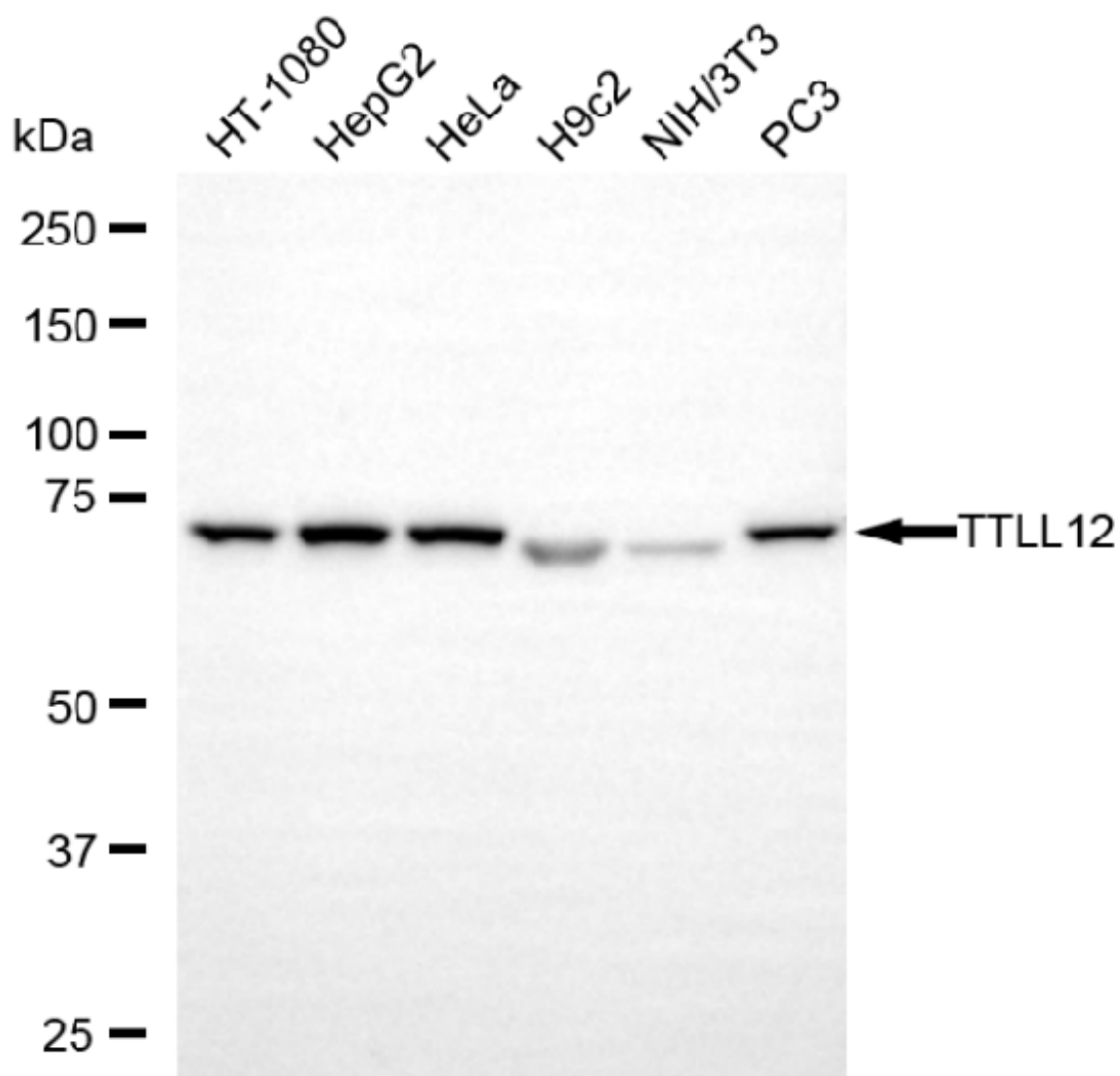
### SUPPORT

SUPPORT@GENUINBIOTECH.COM  
TEL: +1-540-855-7041

### ORDERS

SALES@GENUINBIOTECH.COM  
FAX: +1-540-855-7041

[WWW.GENUINBIOTECH.COM](http://WWW.GENUINBIOTECH.COM)



Western blotting analysis using anti-TTLL12 antibody (Cat#5985). Total cell lysates (30  $\mu$ g) from various cell lines were loaded and separated by SDS-PAGE. The blot was incubated with anti-TTLL12 antibody (Cat#5985, 1:2,500) and HRP-conjugated goat anti-mouse secondary antibody (Cat#101, 1:20,000) respectively. Image was developed using NaQ™ ECL Substrate Kit (Cat#716).

**SUPPORT**

SUPPORT@GENUINBIOTECH.COM  
TEL: +1-540-855-7041

**ORDERS**

SALES@GENUINBIOTECH.COM  
FAX: +1-540-855-7041

[WWW.GENUINBIOTECH.COM](http://WWW.GENUINBIOTECH.COM)