

Catalog #: 5990

Aliases

KATNAL1; Katanin Catalytic Subunit A1 Like 1; Katanin P60 ATPase-Containing Subunit A-Like 1; Katanin Catalytic Subunit A Like 1; Katanin P60 Subunit A-Like 1; Katanin P60 Subunit A Like 1; P60 Katanin-Like 1; MGC2599; EC 5.6.1.1; EC 3.6.4.3

Background

Gene Name: KATNAL1

NCBI Gene Entry: [84056](#)

UniProt Entry: [Q9BW62](#)

Application Information

Molecular Weight: Predicted, 55 kDa; observed, 50 kDa

Clonality: Mouse monoclonal antibody

Clone ID: 25GB6270

Species Reactivity: Human, mouse, rat

Applications Tested: Western blotting (WB)

Immunogen

Recombinant protein of human KATNAL1

Isotype

Mouse IgG1

Storage Buffer

Supplied in PBS (pH 7.4) containing 50% glycerol, and 0.02% sodium azide.

Storage

Store at -20 °C for one year.

Recommended Dilutions

Western Blotting (WB): 1:500-1:2,500

Note: This product is for research use only.

Validation Data

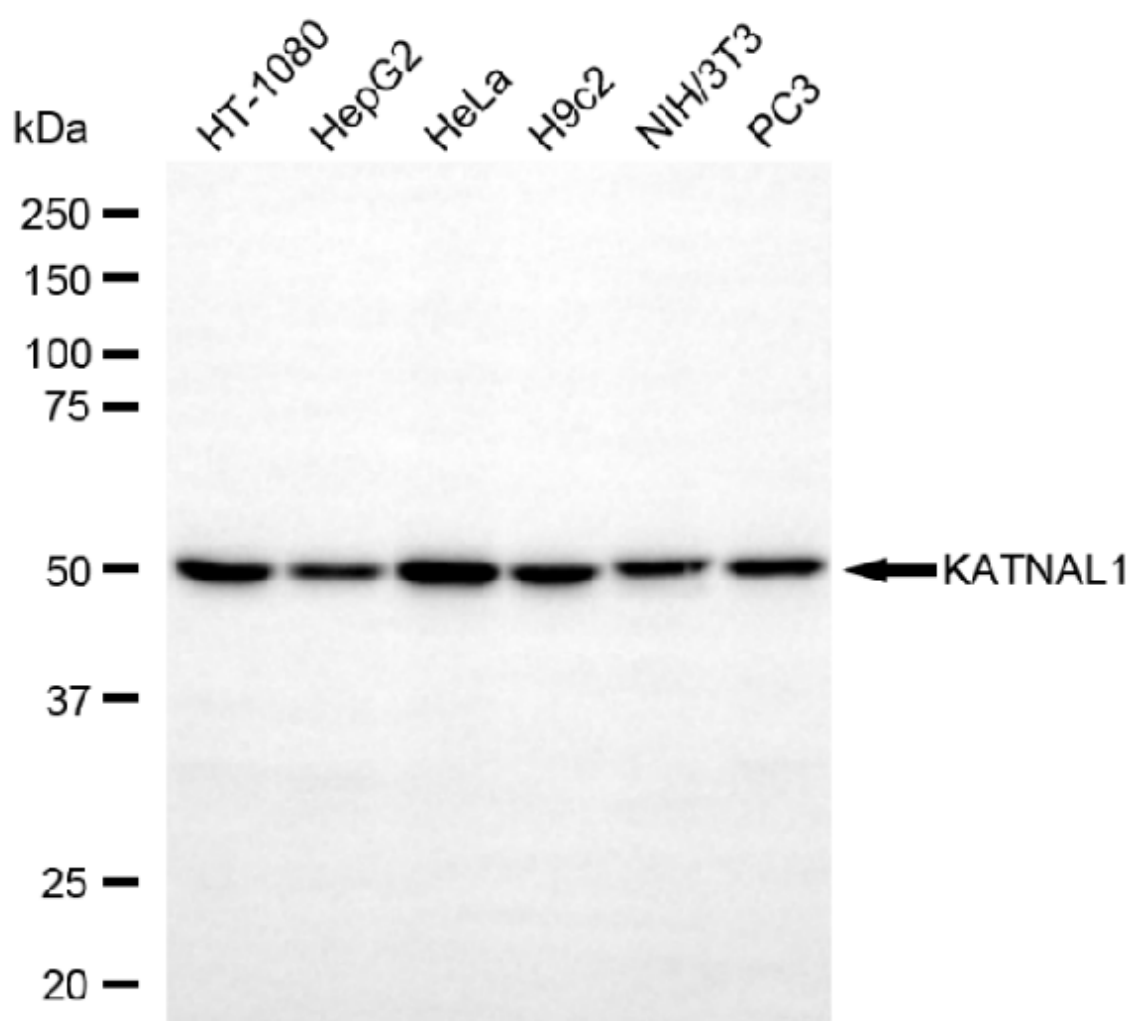
SUPPORT

SUPPORT@GENUINBIOTECH.COM
TEL: +1-540-855-7041

ORDERS

SALES@GENUINBIOTECH.COM
FAX: +1-540-855-7041

WWW.GENUINBIOTECH.COM



Copyright ©2025 Genuin Biotechnologies LLC

Western blotting analysis using anti-KATNAL1 antibody (Cat#5990). Total cell lysates (30 µg) from various cell lines were loaded and separated by SDS-PAGE. The blot was incubated with anti-KATNAL1 antibody (Cat#5990, 1:2,500) and HRP-conjugated goat anti-mouse secondary antibody (Cat#101, 1:20,000) respectively. Image was developed using NaQ™ ECL Substrate Kit (Cat#716).

SUPPORT

SUPPORT@GENUINBIOTECH.COM
TEL: +1-540-855-7041

ORDERS

SALES@GENUINBIOTECH.COM
FAX: +1-540-855-7041

WWW.GENUINBIOTECH.COM