

Catalog #: 5993

Aliases

ILVBL; IlvB Acetolactate Synthase Like; HACL2; AHAS; HACL1L; 209L8; ILV2H; IlvB (Bacterial Acetolactate Synthase)-Like; Acetolactate Synthase-Like Protein; 2-Hydroxyacyl-CoA Lyase 1 Like; Acetolactate Synthase Homolog; 2-Hydroxyacyl-CoA Lyase 2; IlvB-Like Protein; FLJ39061; MGC19535; MGC1269; EC 4.1.2.-; EC 2.2.1

Background

Gene Name: ILVBL

NCBI Gene Entry: [10994](#)

UniProt Entry: [A1L0T0](#)

Application Information

Molecular Weight: Predicted, 68 kDa; observed, 62 kDa

Clonality: Mouse monoclonal antibody

Clone ID: 25GB6285

Species Reactivity: Human

Applications Tested: Western blotting (WB)

Immunogen

Recombinant protein of human ILVBL

Isotype

Mouse IgG2b

Storage Buffer

Supplied in PBS (pH 7.4) containing 50% glycerol, and 0.02% sodium azide.

Storage

Store at -20 °C for one year.

Recommended Dilutions

Western Blotting (WB): 1:500-1:2,500

Note: This product is for research use only.

Validation Data

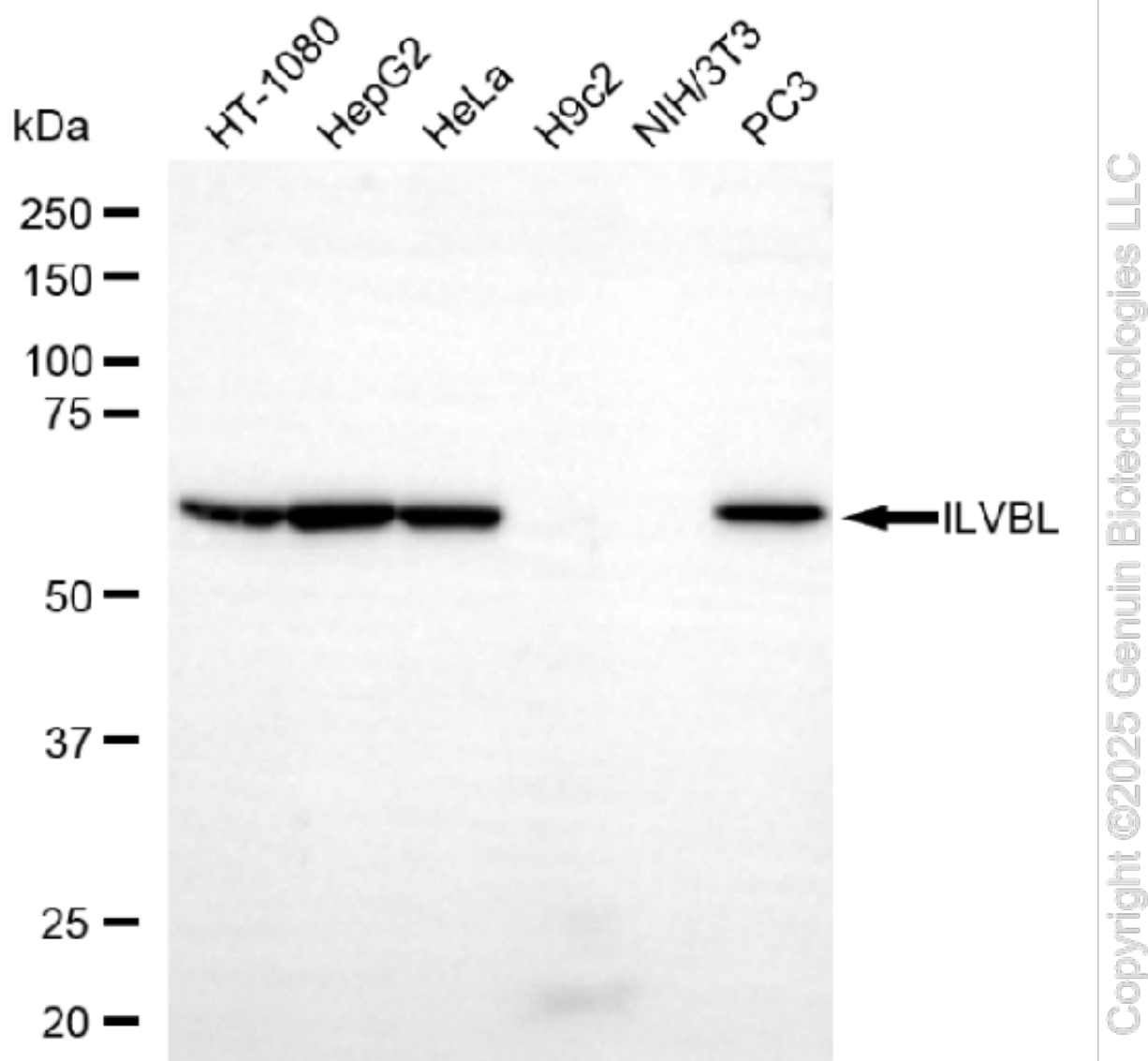
SUPPORT

SUPPORT@GENUINBIOTECH.COM
TEL: +1-540-855-7041

ORDERS

SALES@GENUINBIOTECH.COM
FAX: +1-540-855-7041

WWW.GENUINBIOTECH.COM



Western blotting analysis using anti-ILVBL antibody (Cat#5993). Total cell lysates (30 μ g) from various cell lines were loaded and separated by SDS-PAGE. The blot was incubated with anti-ILVBL antibody (Cat#5993, 1:2,500) and HRP-conjugated goat anti-mouse secondary antibody (Cat#101, 1:20,000) respectively. Image was developed using NaQ™ ECL Substrate Kit (Cat#716).

SUPPORT

SUPPORT@GENUINBIOTECH.COM
TEL: +1-540-855-7041

ORDERS

SALES@GENUINBIOTECH.COM
FAX: +1-540-855-7041

WWW.GENUINBIOTECH.COM