

KD-Validated Anti-Kinesin family member 11 Recombinant Rabbit Monoclonal Antibody



Catalog #: 60146

Aliases

KIF11; Kinesin Family Member 11; TRIP5; KNSL1; HKSP; EG5; Thyroid Receptor-Interacting Protein 5; Kinesin-Like Spindle Protein HKSP; Kinesin-Related Motor Protein Eg5; Kinesin-Like Protein KIF11; TR-Interacting Protein 5; Kinesin-Like Protein 1; TRIP-5; Kinesin-Like 1; MCLMR; Eg5

Background

Gene Name: KIF11

NCBI Gene Entry: [3832](#)

UniProt Entry: [P52732](#)

Application Information

Molecular Weight: Predicted, 119 kDa, observed, 119 kDa

Clonality: Rabbit monoclonal antibody

Clone ID: 23GB2025

Species Reactivity: Human

Applications Tested: Western blotting (WB), flow cytometry (FCM), immunocytochemistry (IC)

Immunogen

A synthesized peptide derived from human Eg5

Isotype

Rabbit IgG

Storage Buffer

Supplied in PBS (pH 7.4) containing 50% glycerol, and 0.02% sodium azide.

Storage

Store at -20 °C for one year.

Recommended Dilutions

Western Blotting (WB): 1:1,000-1:5,000

Flow Cytometry (FCM): 1:2,000

Immunocytochemistry (IC): 1:100-1:1,000

SUPPORT

SUPPORT@GENUINBIOTECH.COM
TEL: +1-540-855-7041

ORDERS

SALES@GENUINBIOTECH.COM
FAX: +1-540-855-7041

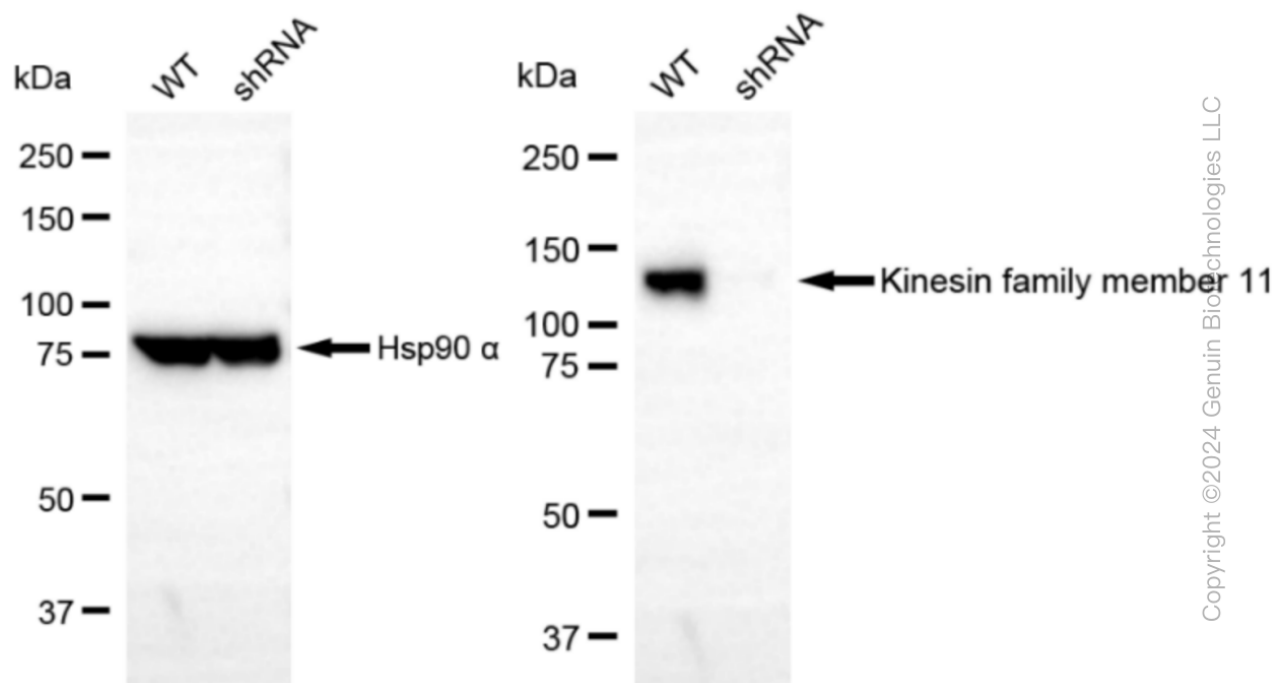
WWW.GENUINBIOTECH.COM

KD-Validated Anti-Kinesin family member 11 Recombinant Rabbit Monoclonal Antibody

PAGE 2

Note: This product is for research use only.

Validation Data



Western blotting analysis using anti-Kinesin family member 11 antibody (Cat#60146). Kinesin family member 11 expression in wild type (WT) and kinesin family member 11 shRNA knockdown (KD) HeLa cells with 30 µg of total cell lysates. β-Tubulin serves as a loading control. The blot was incubated with anti-Kinesin family member 11 antibody (Cat#60146, 1:5,000) and HRP-conjugated goat anti-rabbit secondary antibody (Cat#201, 1:20,000) respectively. Image was developed using FeQ™ ECL Substrate Kit (Cat#226).

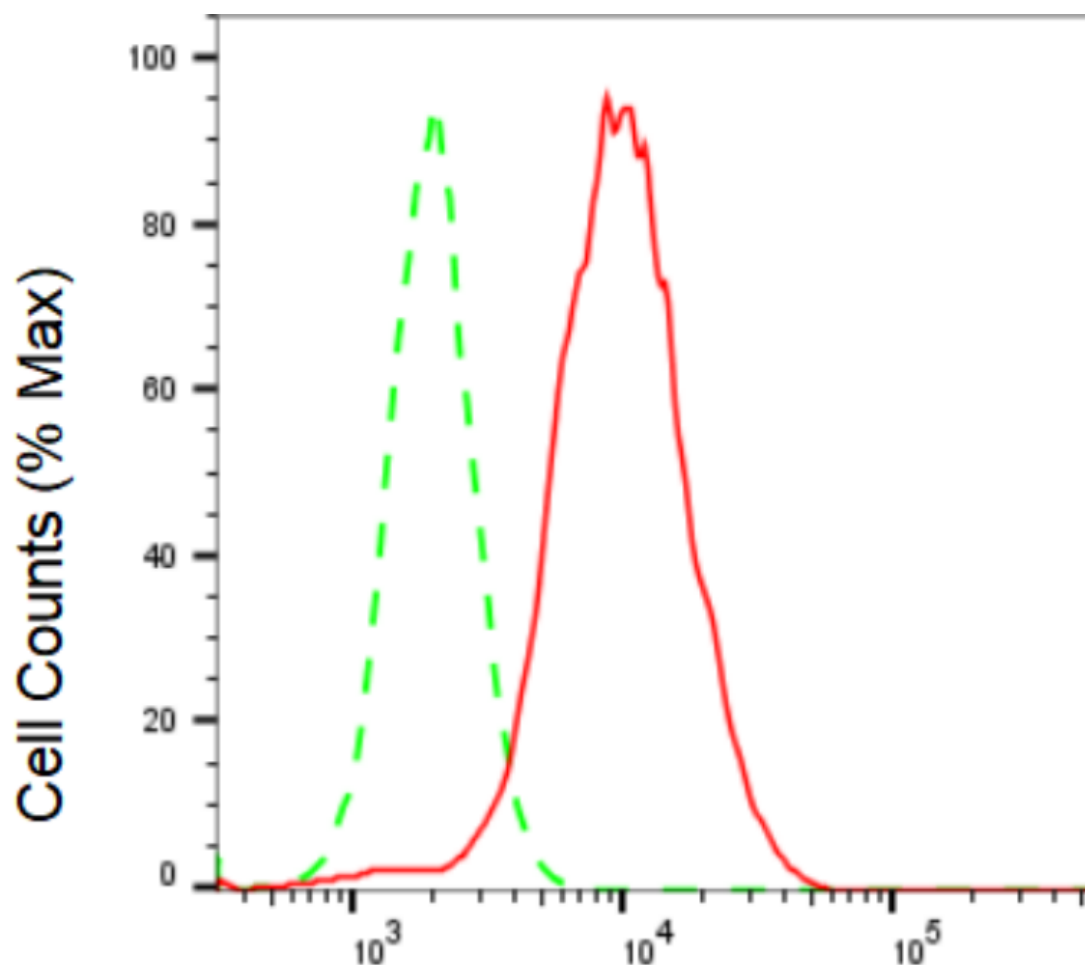
SUPPORT

SUPPORT@GENUINBIOTECH.COM
TEL: +1-540-855-7041

ORDERS

SALES@GENUINBIOTECH.COM
FAX: +1-540-855-7041

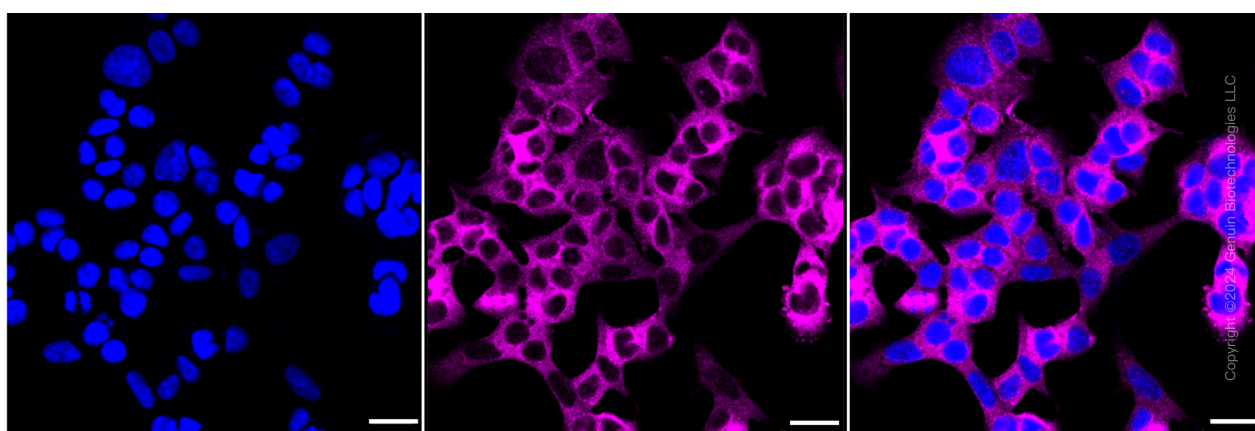
WWW.GENUINBIOTECH.COM



Copyright ©2024 Genuin Biotechnologies LLC

Kinesin family member 11-Alexa Fluor® 647

Flow cytometric analysis of Kinesin family member 11 expression in HAP-1 cells using Kinesin family member 11 antibody (Cat#60146, 1:2,000). Green, isotype control; red, Kinesin family member 11.



Immunocytochemical staining of HAP-1 cells with Kinesin family member 11 antibody (Cat#60146, 1:1,000). Nuclei were stained blue with DAPI; Kinesin family member 11 was

SUPPORT

SUPPORT@GENUINBIOTECH.COM
TEL: +1-540-855-7041

ORDERS

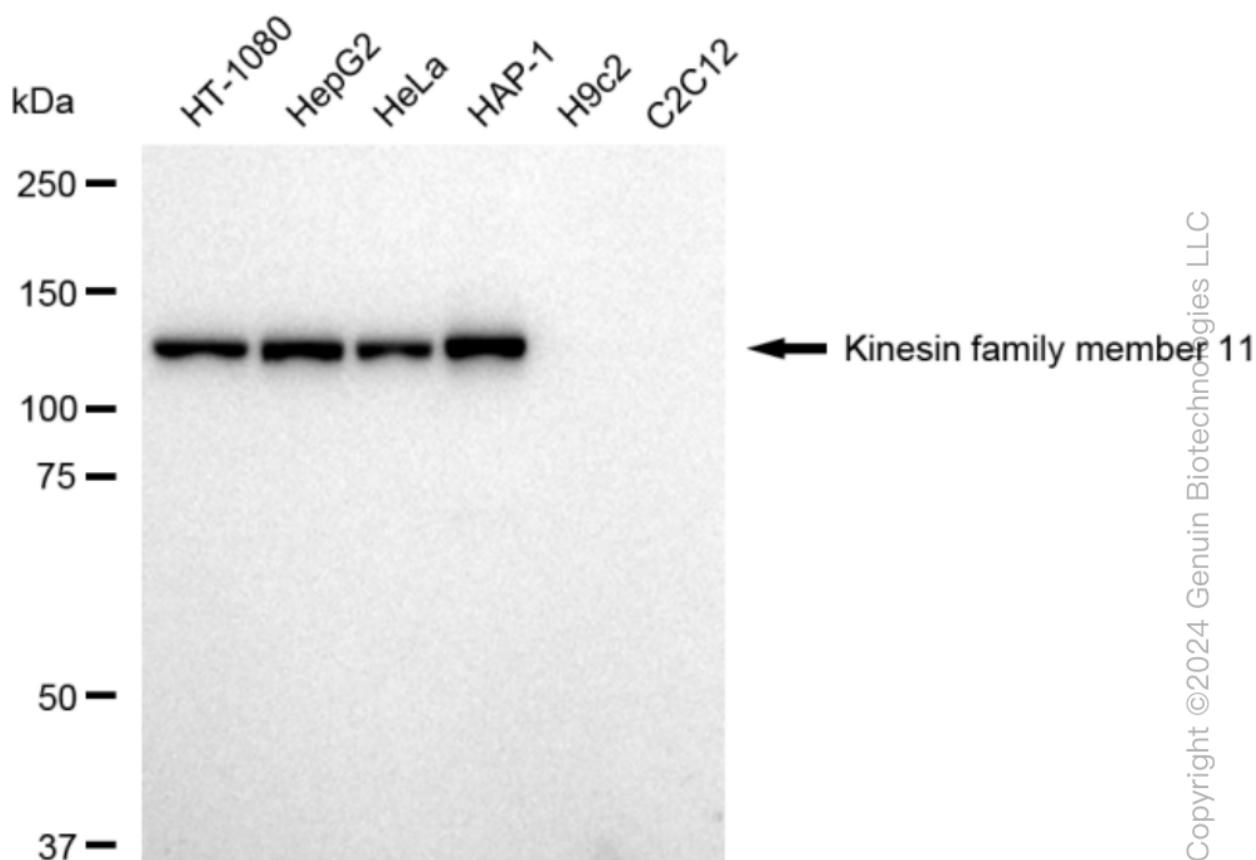
SALES@GENUINBIOTECH.COM
FAX: +1-540-855-7041

WWW.GENUINBIOTECH.COM

KD-Validated Anti-Kinesin family member 11 Recombinant Rabbit Monoclonal Antibody

PAGE 4

stained magenta with Alexa Fluor® 647. Images were taken using Leica stellaris 5. Protein abundance based on laser Intensity and smart gain: Medium. Scale bar: 20 µm.



Western blotting analysis using anti-Kinesin family member 11 antibody (Cat#60146). Total cell lysates (30 µg) from various cell lines were loaded and separated by SDS-PAGE. The blot was incubated with anti-Kinesin family member 11 antibody (Cat#60146, 1:5,000) and HRP-conjugated goat anti-rabbit secondary antibody (Cat#201, 1:20,000) respectively. Image was developed using FeQ™ ECL Substrate Kit (Cat#226).

SUPPORT

SUPPORT@GENUINBIOTECH.COM
TEL: +1-540-855-7041

ORDERS

SALES@GENUINBIOTECH.COM
FAX: +1-540-855-7041

WWW.GENUINBIOTECH.COM