

Catalog #: 6016

Aliases

STK4; Serine/Threonine Kinase 4; MST1; KRS2; YSK3; Mammalian STE20-Like Protein Kinase 1; Serine/Threonine-Protein Kinase Krs-2; Serine/Threonine-Protein Kinase 4; Kinase Responsive To Stress 2; Mammalian Sterile 20-Like 1; STE20-Like Kinase MST1; EC 2.7.11.1; Hippo (Drosophila) Homolog; Yeast Ste20-Like; Hippo Homolog; EC 2.7.11; MST-1

Background

Gene Name: STK4

NCBI Gene Entry: [6789](#)

UniProt Entry: [Q13043](#)

Application Information

Molecular Weight: Predicted, 56 kDa; observed, 56 kDa

Clonality: Rabbit monoclonal antibody

Clone ID: 25GB6405

Species Reactivity: Human, mouse, rat

Applications Tested: Western blotting (WB)

Immunogen

A synthesized peptide derived from human Serine/threonine-protein kinase 4

Isotype

Rabbit IgG

Storage Buffer

Supplied in PBS (pH 7.4) containing 50% glycerol, and 0.02% sodium azide.

Storage

Store at -20 °C for one year.

Recommended Dilutions

Western Blotting (WB): 1:1,000-1:5,000

Note: This product is for research use only.

Validation Data

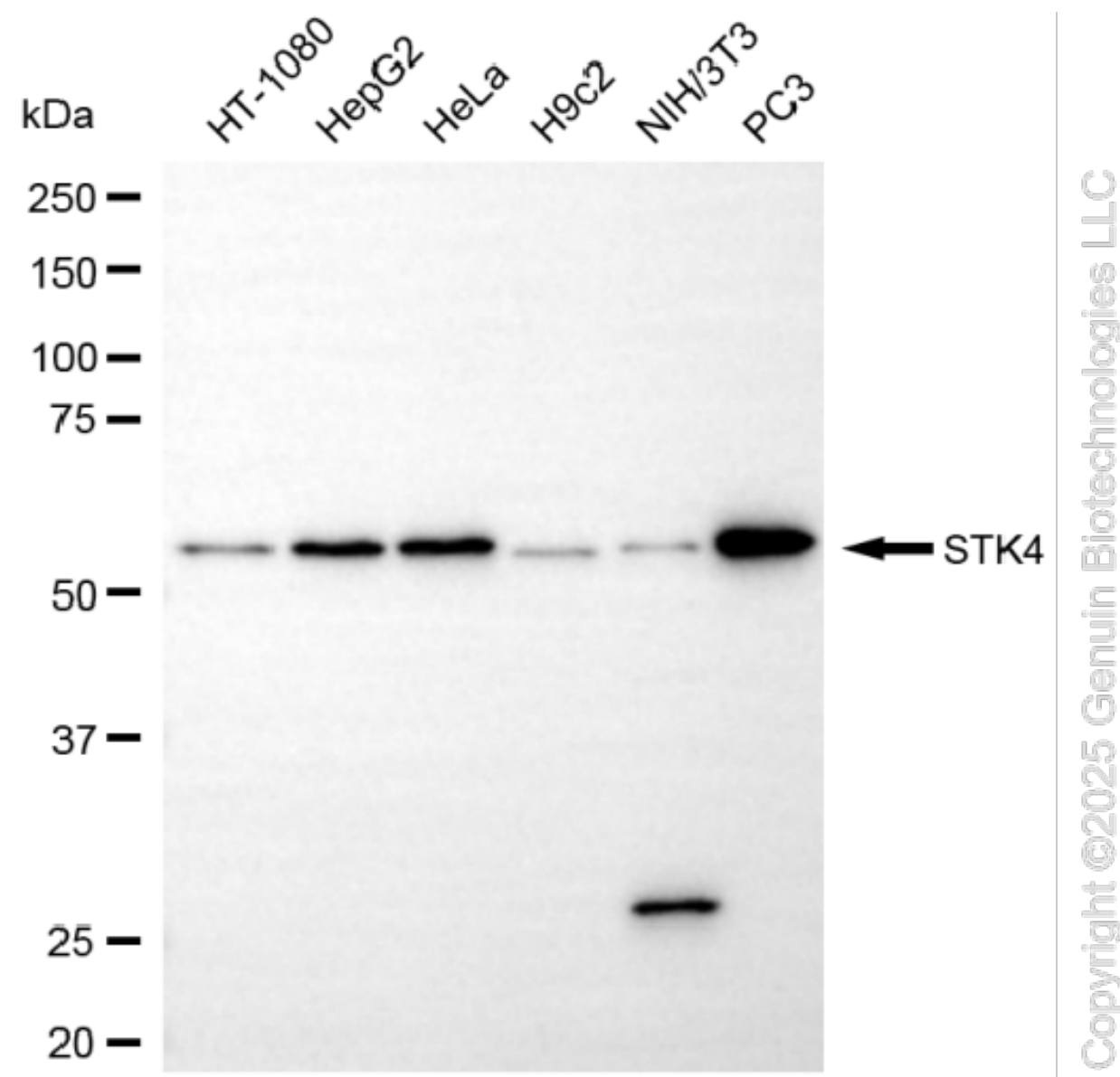
SUPPORT

SUPPORT@GENUINBIOTECH.COM
TEL: +1-540-855-7041

ORDERS

SALES@GENUINBIOTECH.COM
FAX: +1-540-855-7041

WWW.GENUINBIOTECH.COM



Western blotting analysis using anti-STK4 antibody (Cat#6016). Total cell lysates (30 μ g) from various cell lines were loaded and separated by SDS-PAGE. The blot was incubated with anti-STK4 antibody (Cat#6016, 1:5,000) and HRP-conjugated goat anti-rabbit secondary antibody (Cat#201, 1:20,000) respectively. Image was developed using NaQ™ ECL Substrate Kit (Cat#716).

SUPPORT

SUPPORT@GENUINBIOTECH.COM
TEL: +1-540-855-7041

ORDERS

SALES@GENUINBIOTECH.COM
FAX: +1-540-855-7041

WWW.GENUINBIOTECH.COM