

Catalog #: 6021

Aliases

CSNK1A1; Casein Kinase 1 Alpha 1; CK1; CK1a; CKIa; Casein Kinase I Isoform Alpha; Clock Regulator Kinase; EC 2.7.11.1; CKI-Alpha; CK1alpha; CKIalpha; Epididymis Secretory Sperm Binding Protein Li 77p; Down-Regulated In Lung Cancer; Casein Kinase 1, Alpha; HEL-S-77p; HLCDGP1; PRO2975

Background

Gene Name: CSNK1A1

NCBI Gene Entry: [1452](#)

UniProt Entry: [P48729](#)

Application Information

Molecular Weight: Predicted, 39 kDa; observed, 34 kDa

Clonality: Rabbit monoclonal antibody

Clone ID: 25GB6430

Species Reactivity: Human, mouse, rat

Applications Tested: Western blotting (WB)

Immunogen

A synthesized peptide derived from human Casein Kinase 1 alpha

Isotype

Rabbit IgG

Storage Buffer

Supplied in PBS (pH 7.4) containing 50% glycerol, and 0.02% sodium azide.

Storage

Store at -20 °C for one year.

Recommended Dilutions

Western Blotting (WB): 1:1,000-1:5,000

Note: This product is for research use only.

Validation Data

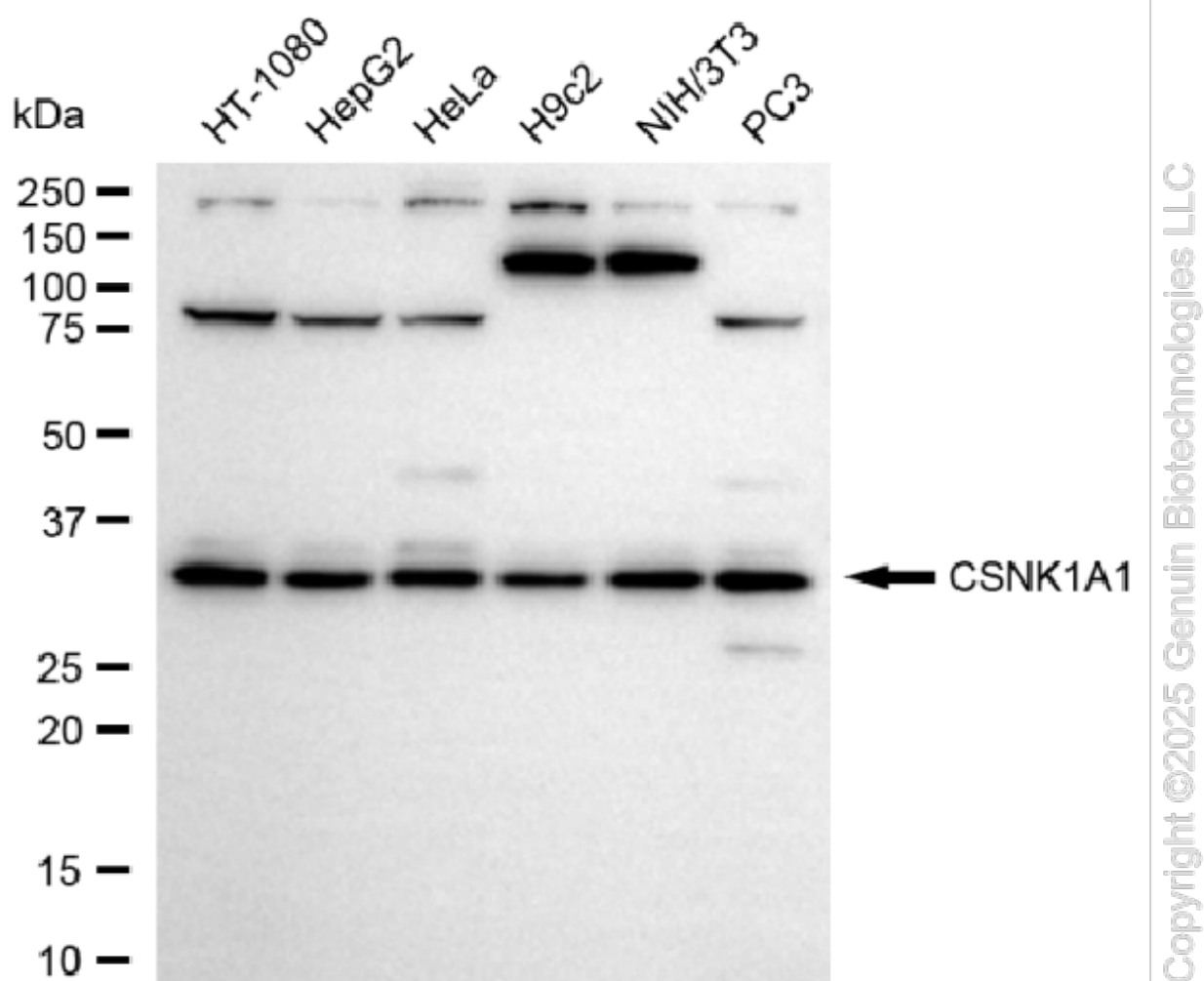
SUPPORT

SUPPORT@GENUINBIOTECH.COM
TEL: +1-540-855-7041

ORDERS

SALES@GENUINBIOTECH.COM
FAX: +1-540-855-7041

WWW.GENUINBIOTECH.COM



Western blotting analysis using anti-CSNK1A1 antibody (Cat#6021). Total cell lysates (30 μ g) from various cell lines were loaded and separated by SDS-PAGE. The blot was incubated with anti-CSNK1A1 antibody (Cat#6021, 1:5,000) and HRP-conjugated goat anti-rabbit secondary antibody (Cat#201, 1:20,000) respectively. Image was developed using NaQ™ ECL Substrate Kit (Cat#716).