

Catalog #: 6027

Aliases

CCNT1; Cyclin T1; CYCT1; CCNT; Human Immunodeficiency Virus Type 1 (HIV-1) Expression (Elevated); Cyclin-T1; HIVE1; CDK9-Associated C-Type Protein; Cyclin C-Related Protein; MLLT10/CCNT1 Fusion; Cyclin-T; CycT1

Background

Gene Name: CCNT1

NCBI Gene Entry: [904](#)

UniProt Entry: [O60563](#)

Application Information

Molecular Weight: Predicted, 81 kDa; observed, 75 kDa

Clonality: Rabbit monoclonal antibody

Clone ID: 25GB6460

Species Reactivity: Human, mouse, rat

Applications Tested: Western blotting (WB)

Immunogen

Recombinant protein of human Cyclin T1

Isotype

Rabbit IgG

Storage Buffer

Supplied in PBS (pH 7.4) containing 50% glycerol, and 0.02% sodium azide.

Storage

Store at -20 °C for one year.

Recommended Dilutions

Western Blotting (WB): 1:1,000-1:5,000

Note: This product is for research use only.

Validation Data

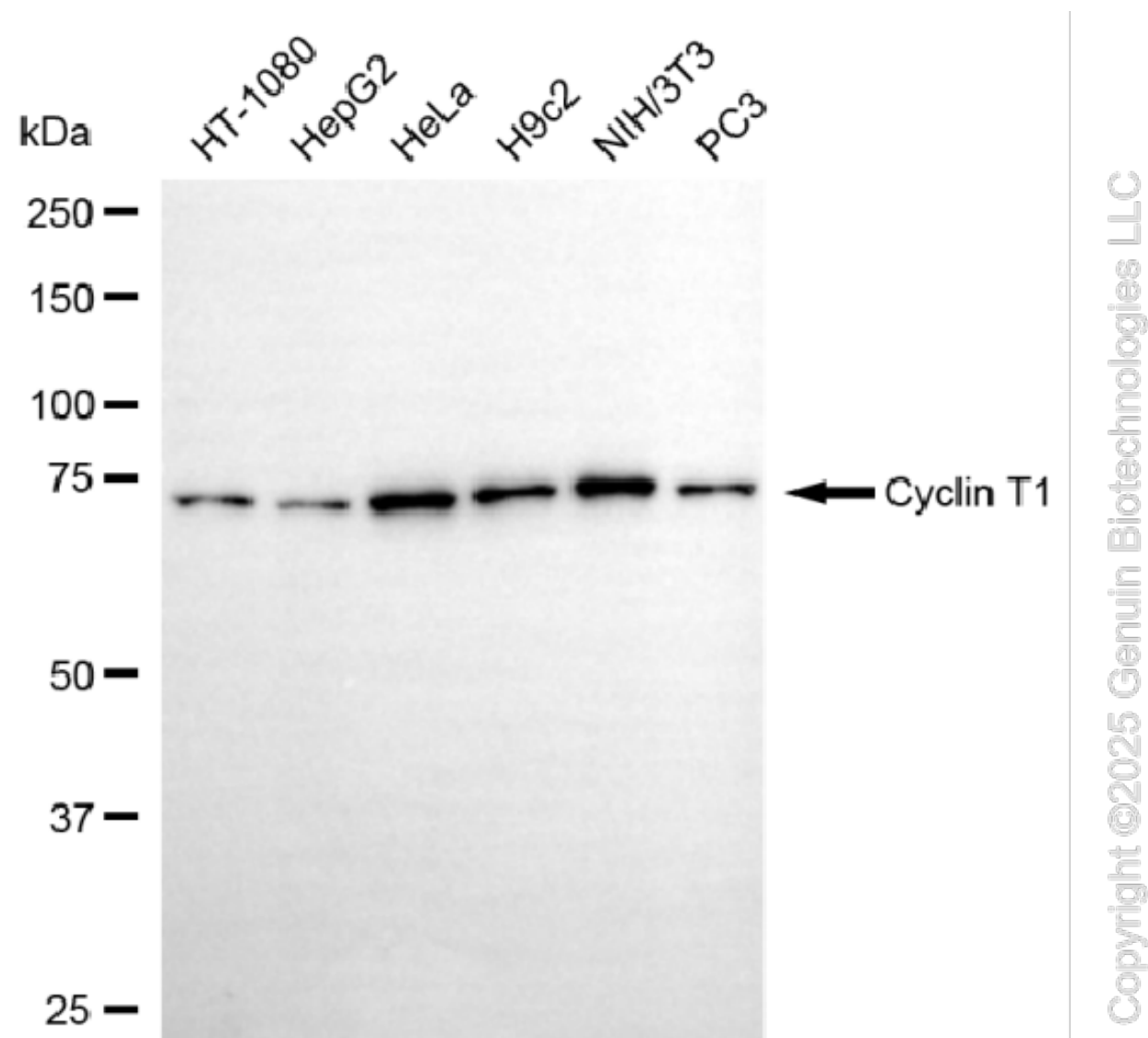
SUPPORT

SUPPORT@GENUINBIOTECH.COM
TEL: +1-540-855-7041

ORDERS

SALES@GENUINBIOTECH.COM
FAX: +1-540-855-7041

WWW.GENUINBIOTECH.COM



Western blotting analysis using anti-cyclin T1 antibody (Cat#6027). Total cell lysates (30 μ g) from various cell lines were loaded and separated by SDS-PAGE. The blot was incubated with anti-cyclin T1 antibody (Cat#6027, 1:5,000) and HRP-conjugated goat anti-rabbit secondary antibody (Cat#201, 1:20,000) respectively. Image was developed using NaQ™ ECL Substrate Kit (Cat#716).

SUPPORT

SUPPORT@GENUINBIOTECH.COM
TEL: +1-540-855-7041

ORDERS

SALES@GENUINBIOTECH.COM
FAX: +1-540-855-7041

WWW.GENUINBIOTECH.COM