

Catalog #: 6036

Aliases

KCTD3; Potassium Channel Tetramerization Domain Containing 3; NY-REN-45; Potassium Channel Tetramerisation Domain Containing 3; BTB/POZ Domain-Containing Protein KCTD3; Renal Carcinoma Antigen NY-REN-45; NY-REN-45 Antigen

Background

Gene Name: KCTD3

NCBI Gene Entry: [51133](#)

UniProt Entry: [Q9Y597](#)

Application Information

Molecular Weight: Predicted, 89 kDa; observed, 75-100 kDa

Clonality: Rabbit monoclonal antibody

Clone ID: 25GB6505

Species Reactivity: Human

Applications Tested: Western blotting (WB)

Immunogen

Recombinant protein of human KCTD3

Isotype

Rabbit IgG

Storage Buffer

Supplied in PBS (pH 7.4) containing 50% glycerol, and 0.02% sodium azide.

Storage

Store at -20 °C for one year.

Recommended Dilutions

Western Blotting (WB): 1:1,000-1:5,000

Note: This product is for research use only.

Validation Data

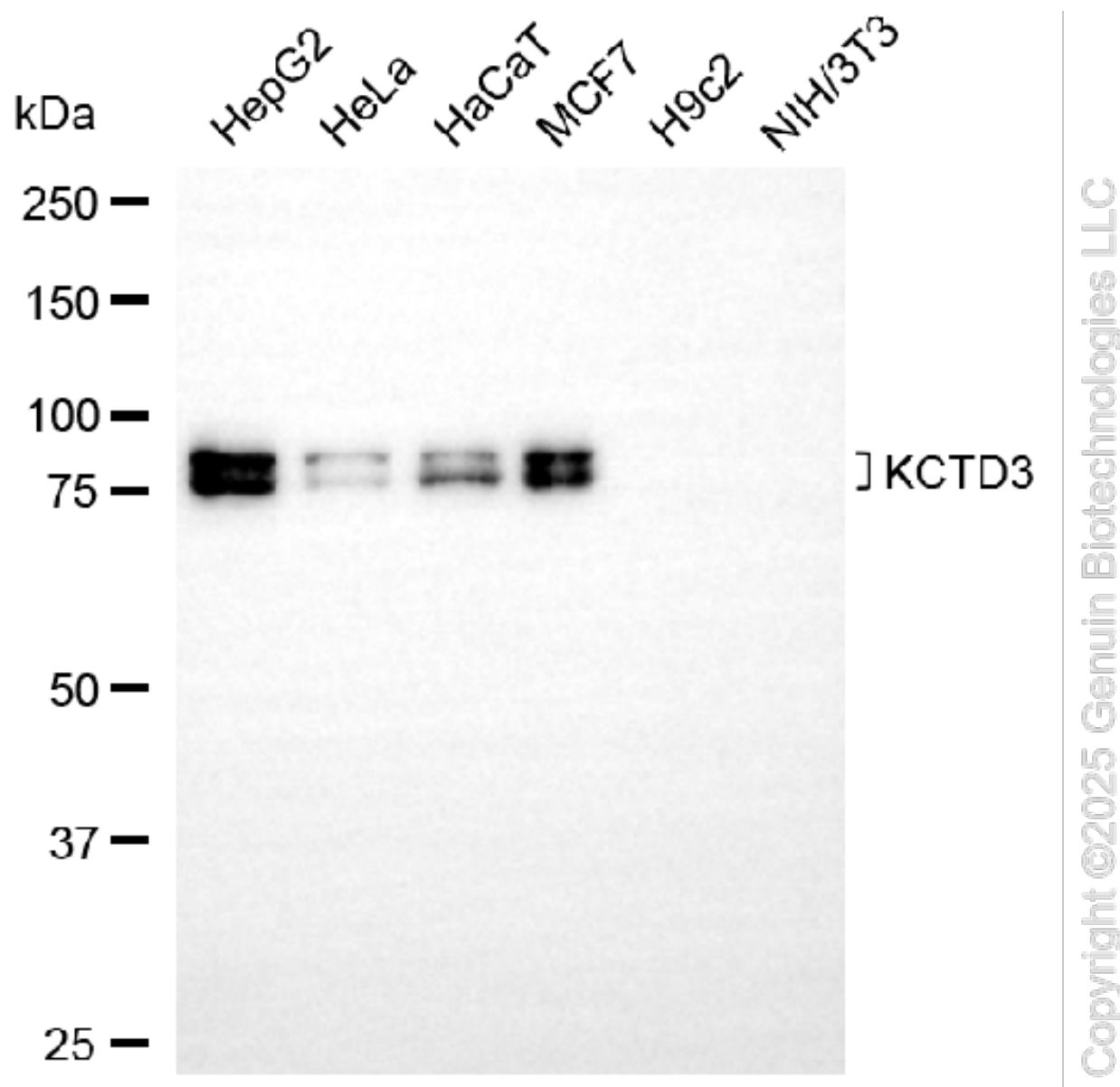
SUPPORT

SUPPORT@GENUINBIOTECH.COM
TEL: +1-540-855-7041

ORDERS

SALES@GENUINBIOTECH.COM
FAX: +1-540-855-7041

WWW.GENUINBIOTECH.COM



Western blotting analysis using anti-KCTD3 antibody (Cat#6036). Total cell lysates (30 μ g) from various cell lines were loaded and separated by SDS-PAGE. The blot was incubated with anti-KCTD3 antibody (Cat#6036, 1:5,000) and HRP-conjugated goat anti-rabbit secondary antibody (Cat#201, 1:20,000) respectively. Image was developed using NaQ™ ECL Substrate Kit (Cat#716).

SUPPORT

SUPPORT@GENUINBIOTECH.COM
TEL: +1-540-855-7041

ORDERS

SALES@GENUINBIOTECH.COM
FAX: +1-540-855-7041

WWW.GENUINBIOTECH.COM