

Catalog #: 6037

Aliases

KRIT1; KRIT1 Ankyrin Repeat Containing; Krev Interaction Trapped 1; CCM1; CAM; Cerebral Cavernous Malformations 1 Protein; Krev Interaction Trapped Protein 1; Ankyrin Repeat-Containing Protein Krit1; Cerebral Cavernous Malformations 1; KRIT1, Ankyrin Repeat Containing

Background

Gene Name: KRIT1

NCBI Gene Entry: [889](#)

UniProt Entry: [O00522](#)

Application Information

Molecular Weight: Predicted, 84 kDa; observed, 73 kDa

Clonality: Rabbit monoclonal antibody

Clone ID: 25GB6510

Species Reactivity: Human, mouse, rat

Applications Tested: Western blotting (WB)

Immunogen

Recombinant protein of human KRIT1

Isotype

Rabbit IgG

Storage Buffer

Supplied in PBS (pH 7.4) containing 50% glycerol, and 0.02% sodium azide.

Storage

Store at -20 °C for one year.

Recommended Dilutions

Western Blotting (WB): 1:1,000-1:5,000

Note: This product is for research use only.

Validation Data

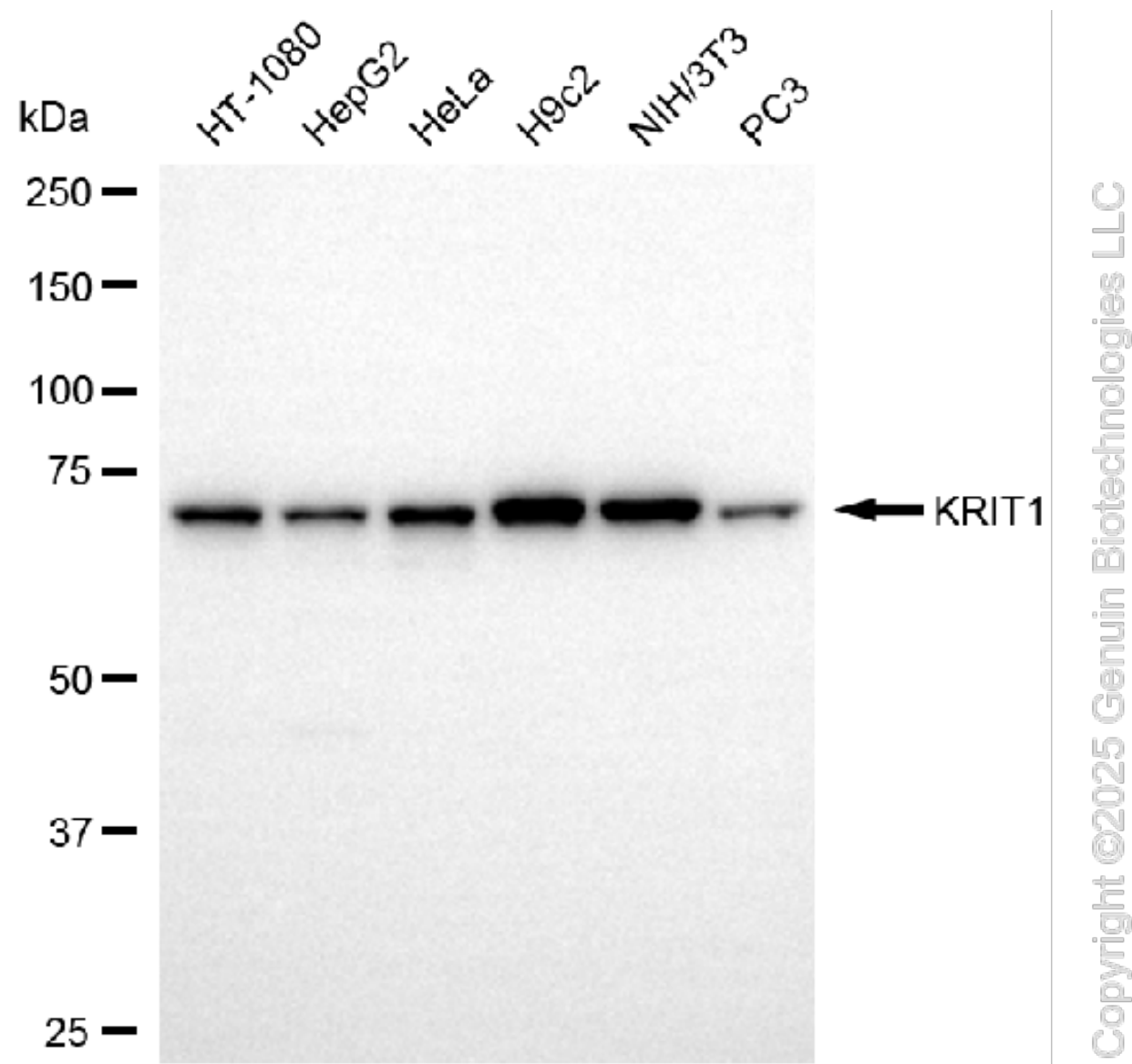
SUPPORT

SUPPORT@GENUINBIOTECH.COM
TEL: +1-540-855-7041

ORDERS

SALES@GENUINBIOTECH.COM
FAX: +1-540-855-7041

WWW.GENUINBIOTECH.COM



Western blotting analysis using anti-KRIT1 antibody (Cat#6037). Total cell lysates (30 μ g) from various cell lines were loaded and separated by SDS-PAGE. The blot was incubated with anti-KRIT1 antibody (Cat#6037, 1:5,000) and HRP-conjugated goat anti-rabbit secondary antibody (Cat#201, 1:20,000) respectively. Image was developed using NaQ™ ECL Substrate Kit (Cat#716).

SUPPORT

SUPPORT@GENUINBIOTECH.COM
TEL: +1-540-855-7041

ORDERS

SALES@GENUINBIOTECH.COM
FAX: +1-540-855-7041

WWW.GENUINBIOTECH.COM