

# Anti-Malic Enzyme 2 Rabbit Monoclonal Antibody



**Catalog #: 6042**

## Aliases

ME2; Malic Enzyme 2; NAD-Dependent Malic Enzyme, Mitochondrial; Malate Dehydrogenase (Oxaloacetate-Decarboxylating); Malic Enzyme 2, NAD(+)-Dependent, Mitochondrial; NAD-ME; Pyruvic-Malic Carboxylase; EC 1.1.1.38; EC 1.1.1; ODS1

## Background

Gene Name: ME2

NCBI Gene Entry: [4200](#)

UniProt Entry: [P23368](#)

## Application Information

Molecular Weight: Predicted, 65 kDa; observed, 58 kDa

Clonality: Rabbit monoclonal antibody

Clone ID: 25GB6535

Species Reactivity: Human

Applications Tested: Western blotting (WB)

## Immunogen

A synthesized peptide derived from human ME2

## Isotype

Rabbit IgG

## Storage Buffer

Supplied in PBS (pH 7.4) containing 50% glycerol, and 0.02% sodium azide.

## Storage

Store at -20 °C for one year.

## Recommended Dilutions

Western Blotting (WB): 1:1,000-1:5,000

**Note:** This product is for research use only.

## Validation Data

---

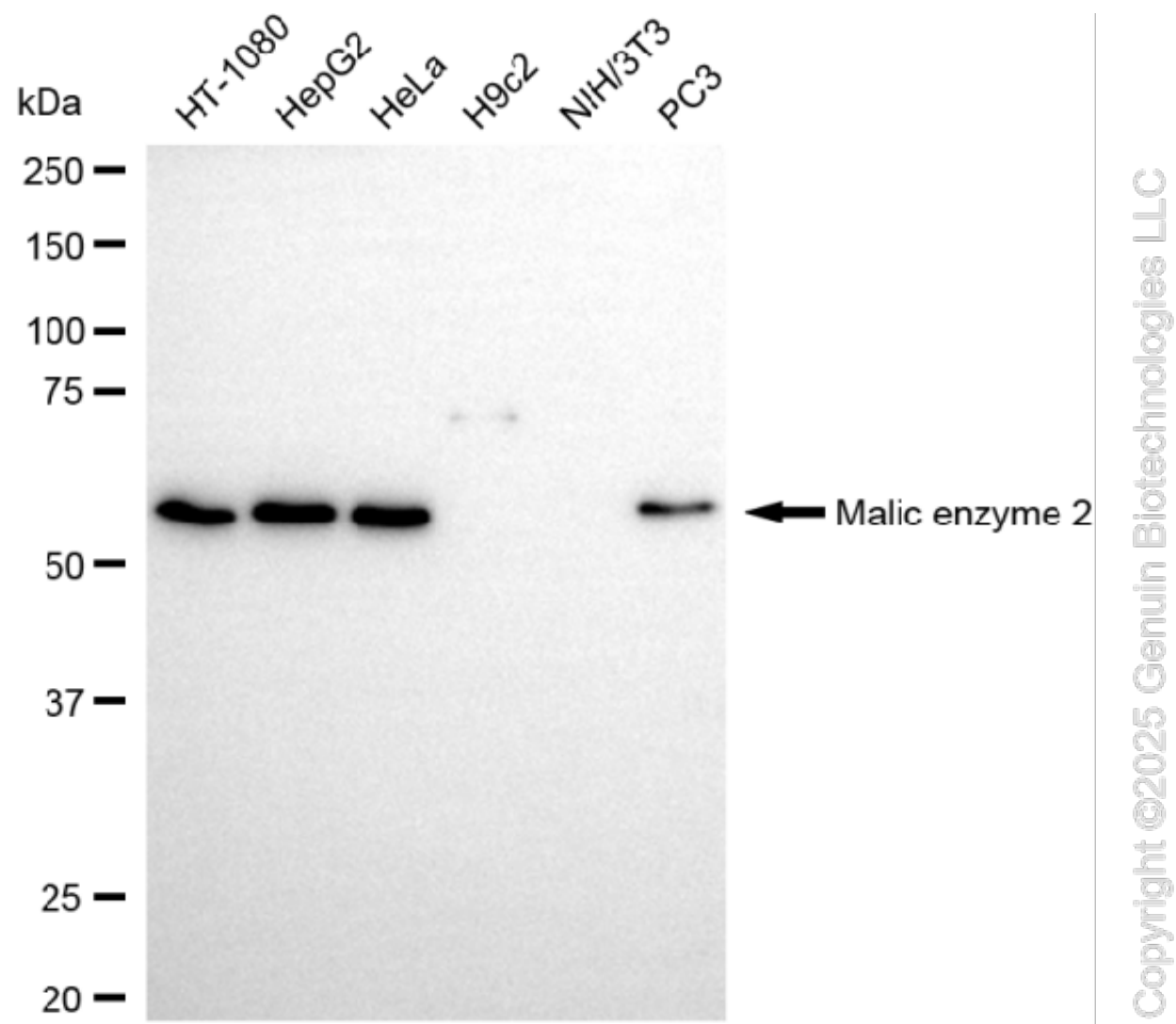
### SUPPORT

SUPPORT@GENUINBIOTECH.COM  
TEL: +1-540-855-7041

### ORDERS

SALES@GENUINBIOTECH.COM  
FAX: +1-540-855-7041

[WWW.GENUINBIOTECH.COM](http://WWW.GENUINBIOTECH.COM)



Western blotting analysis using anti-malic enzyme 2 antibody (Cat#6042). Total cell lysates (30  $\mu$ g) from various cell lines were loaded and separated by SDS-PAGE. The blot was incubated with anti-malic enzyme 2 antibody (Cat#6042, 1:5,000) and HRP-conjugated goat anti-rabbit secondary antibody (Cat#201, 1:20,000) respectively. Image was developed using NaQ™ ECL Substrate Kit (Cat#716).