

## Catalog #: 6043

### Aliases

MRPS26; Mitochondrial Ribosomal Protein S26; MRP-S13; MRP-S26; RPMS13; DJ534B8.3; C20orf193; MS26; 28S Ribosomal Protein S13, Mitochondrial; 28S Ribosomal Protein S26, Mitochondrial; Small Ribosomal Subunit Protein MS26; S13mt; S26mt; Serologically Defined Breast Cancer Antigen NY-BR-87; Mitochondrial Small Ribosomal Subunit Protein MS26; Chromosome 20 Open Reading Frame 193; NY-BR-87; MRPS13; GI008

### Background

Gene Name: MRPS26

NCBI Gene Entry: [64949](#)

UniProt Entry: [Q9BYN8](#)

### Application Information

Molecular Weight: Predicted, 24 kDa; observed, 24 kDa

Clonality: Rabbit monoclonal antibody

Clone ID: 25GB6540

Species Reactivity: Human

Applications Tested: Western blotting (WB)

### Immunogen

Recombinant protein of human MRPS26

### Isotype

Rabbit IgG

### Storage Buffer

Supplied in PBS (pH 7.4) containing 50% glycerol, and 0.02% sodium azide.

### Storage

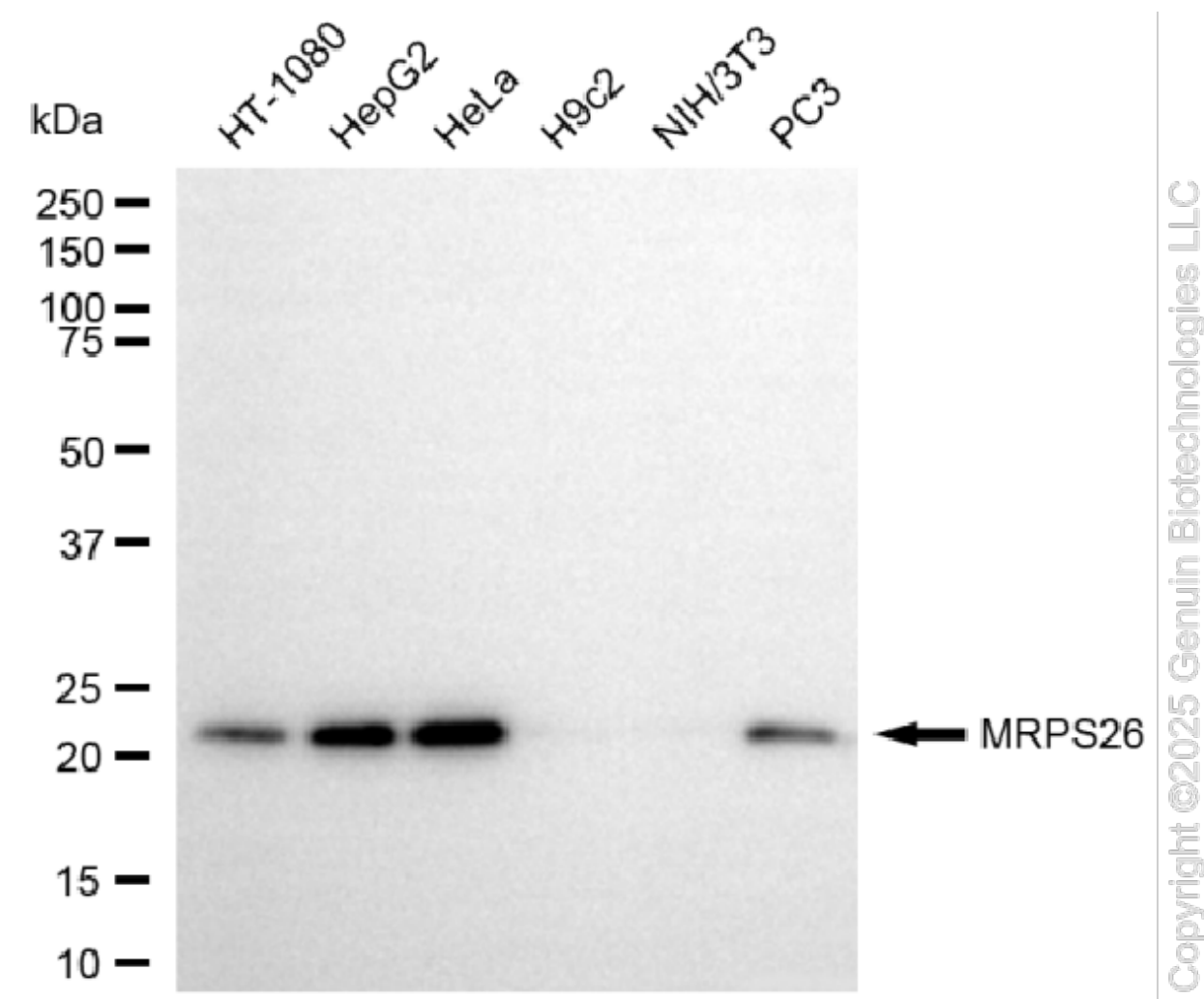
Store at -20 °C for one year.

### Recommended Dilutions

Western Blotting (WB): 1:1,000-1:5,000

**Note:** This product is for research use only.

## Validation Data



Western blotting analysis using anti-MRPS26 antibody (Cat#6043). Total cell lysates (30  $\mu$ g) from various cell lines were loaded and separated by SDS-PAGE. The blot was incubated with anti-MRPS26 antibody (Cat#6043, 1:5,000) and HRP-conjugated goat anti-rabbit secondary antibody (Cat#201, 1:20,000) respectively. Image was developed using NaQ™ ECL Substrate Kit (Cat#716).

## SUPPORT

SUPPORT@GENUINBIOTECH.COM  
TEL: +1-540-855-7041

## ORDERS

SALES@GENUINBIOTECH.COM  
FAX: +1-540-855-7041

WWW.GENUINBIOTECH.COM