

Catalog #: 6061

Aliases

TAF1C; TATA-Box Binding Protein Associated Factor, RNA Polymerase I Subunit C; TAFI110; MGC:39976; TAFI95; SL1; TATA Box Binding Protein (TBP)-Associated Factor, RNA Polymerase I, C, 110kDa; TATA Box Binding Protein (TBP)-Associated Factor, RNA Polymerase I, C, 110kD; TATA Box-Binding Protein-Associated Factor RNA Polymerase I Subunit C; RNA Polymerase I-Specific TBP-Associated Factor 110 KDa; Transcription Initiation Factor SL1/TIF-IB Subunit C; TATA Box-Binding Protein-Associated Factor 1C; TBP-Associated Factor 1C; TATA-Box Binding Protein Associated Factor, RNA Polymerase I, C; Transcription Factor SL1; SL1, 110kD Subunit

Background

Gene Name: TAF1C

NCBI Gene Entry: [9013](#)

UniProt Entry: [Q15572](#)

Application Information

Molecular Weight: Predicted, 95 kDa; observed, 100 kDa

Clonality: Rabbit monoclonal antibody

Clone ID: 25GB6630

Species Reactivity: Human

Applications Tested: Western blotting (WB)

Immunogen

A synthesized peptide derived from human TAF1C

Isotype

Rabbit IgG

Storage Buffer

Supplied in PBS (pH 7.4) containing 50% glycerol, and 0.02% sodium azide.

Storage

Store at -20 °C for one year.

Recommended Dilutions

Western Blotting (WB): 1:1,000-1:5,000

SUPPORT

SUPPORT@GENUINBIOTECH.COM
TEL: +1-540-855-7041

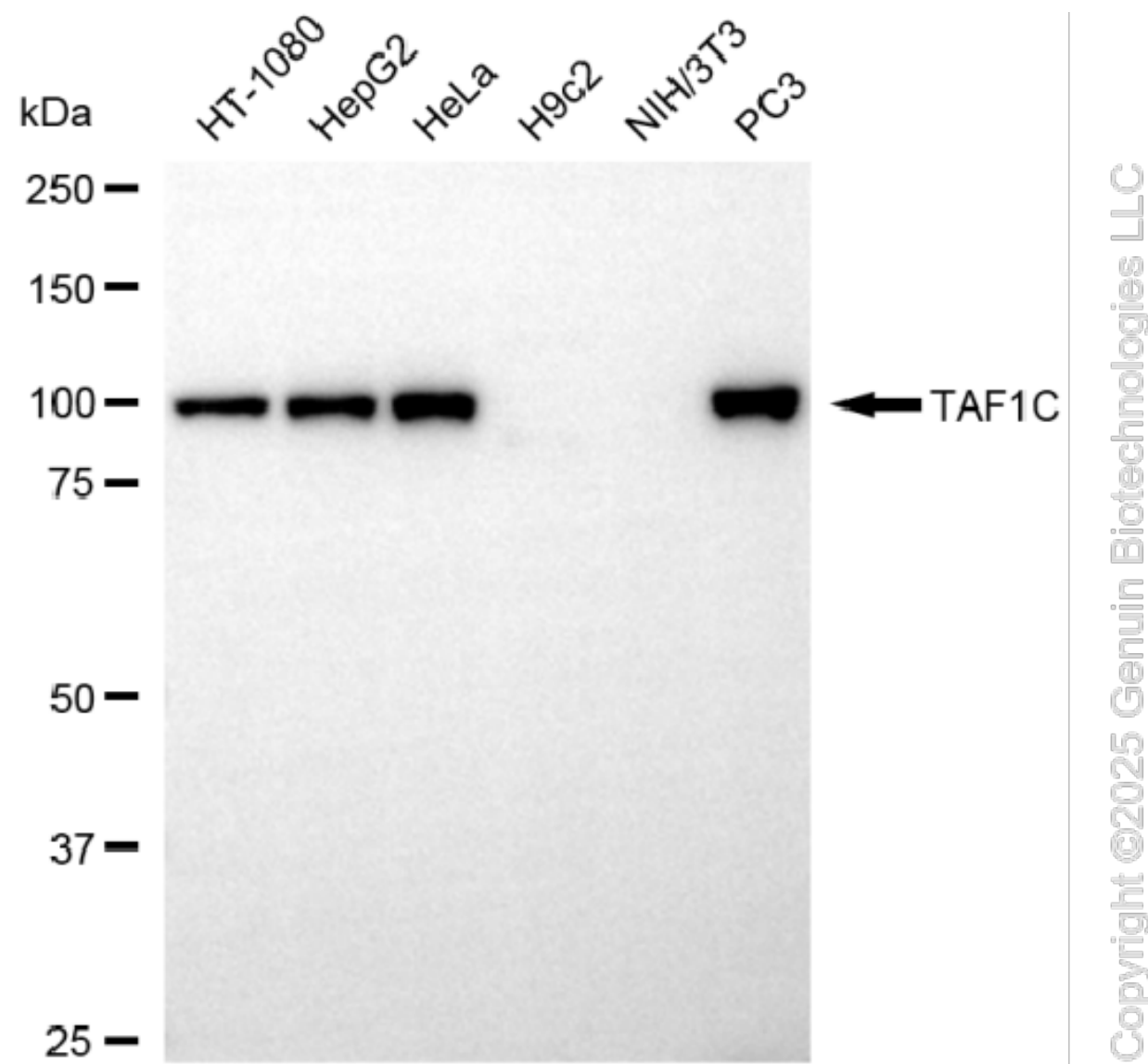
ORDERS

SALES@GENUINBIOTECH.COM
FAX: +1-540-855-7041

WWW.GENUINBIOTECH.COM

Note: This product is for research use only.

Validation Data



Western blotting analysis using anti-TAF1C antibody (Cat#6061). Total cell lysates (30 µg) from various cell lines were loaded and separated by SDS-PAGE. The blot was incubated with anti-TAF1C antibody (Cat#6061, 1:5,000) and HRP-conjugated goat anti-rabbit secondary antibody (Cat#201, 1:20,000) respectively. Image was developed using NaQ™ ECL Substrate Kit (Cat#716).

SUPPORT

SUPPORT@GENUINBIOTECH.COM
TEL: +1-540-855-7041

ORDERS

SALES@GENUINBIOTECH.COM
FAX: +1-540-855-7041

WWW.GENUINBIOTECH.COM