

# Anti-BCAM Recombinant Rabbit Monoclonal Antibody



**Catalog #: 6097**

## Aliases

BCAM; Basal Cell Adhesion Molecule (Lutheran Blood Group); F8/G253; CD239; B-CAM; LU; Basal Cell Adhesion Molecule (Lu And Au Blood Groups); B-CAM Cell Surface Glycoprotein; Basal Cell Adhesion Molecule; Auberger B Antigen; F8/G253 Antigen; MSK19; Lutheran Blood Group (Auberger B Antigen Included); Lutheran Blood Group Variant LUGA; Lutheran Blood Group Glycoprotein; B-Cell Adhesion Molecule; Lutheran Antigen; CD239 Antigen; AU

## Background

Gene Name: BCAM

NCBI Gene Entry: [4059](#)

UniProt Entry: [P50895](#)

## Application Information

Molecular Weight: Predicted, 67 kDa; observed, 75-85 kDa

Clonality: Rabbit monoclonal antibody

Clone ID: 25GB6850

Species Reactivity: Human

Applications Tested: Western blotting (WB)

## Immunogen

A synthesized peptide derived from human BCAM

## Isotype

Rabbit IgG

## Storage Buffer

Supplied in PBS (pH 7.4) containing 50% glycerol, and 0.02% sodium azide.

## Storage

Store at -20 °C for one year.

## Recommended Dilutions

Western Blotting (WB): 1:1,000-1:5,000

**Note:** This product is for research use only.

---

### SUPPORT

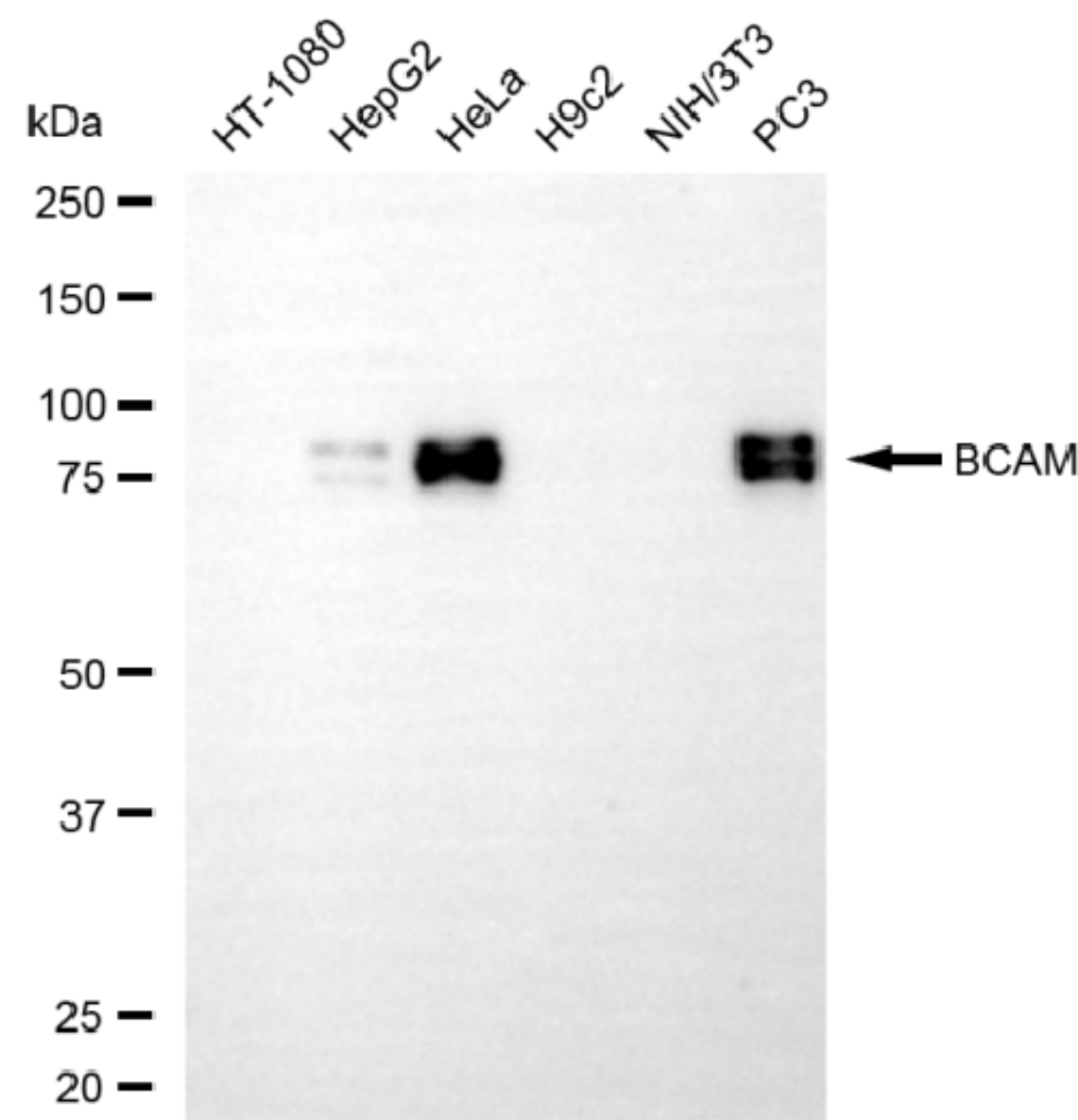
SUPPORT@GENUINBIOTECH.COM  
TEL: +1-540-855-7041

### ORDERS

SALES@GENUINBIOTECH.COM  
FAX: +1-540-855-7041

[WWW.GENUINBIOTECH.COM](http://WWW.GENUINBIOTECH.COM)

## Validation Data



Copyright ©2025 Genuin Biotechnologies LLC

Western blotting analysis using anti-BCAM antibody (Cat#6097). Total cell lysates (30 µg) from various cell lines were loaded and separated by SDS-PAGE. The blot was incubated with anti-BCAM antibody (Cat#6097, 1:5,000) and HRP-conjugated goat anti-rabbit secondary antibody (Cat#201, 1:20,000) respectively. Image was developed using NaQ™ ECL Substrate Kit (Cat#716).

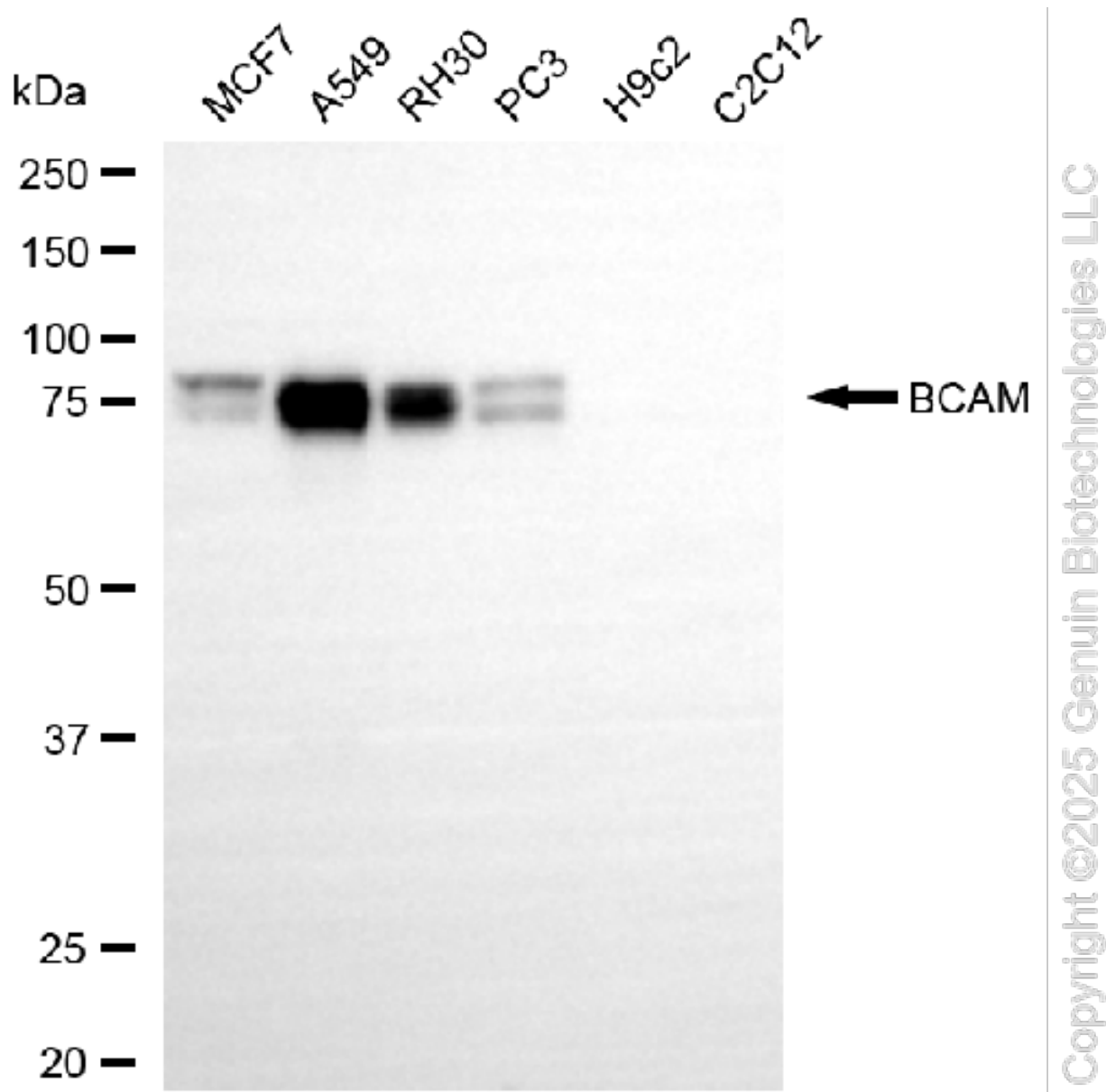
### SUPPORT

SUPPORT@GENUINBIOTECH.COM  
TEL: +1-540-855-7041

### ORDERS

SALES@GENUINBIOTECH.COM  
FAX: +1-540-855-7041

[WWW.GENUINBIOTECH.COM](http://WWW.GENUINBIOTECH.COM)



Western blotting analysis using anti-BCAM antibody (Cat#6097). Total cell lysates (30  $\mu$ g) from various cell lines were loaded and separated by SDS-PAGE. The blot was incubated with anti-BCAM antibody (Cat#6097, 1:5,000) and HRP-conjugated goat anti-rabbit secondary antibody (Cat#201, 1:20,000) respectively. Image was developed using NaQ™ ECL Substrate Kit (Cat#716).