

Anti-LAMB1 Recombinant Rabbit Monoclonal Antibody



Catalog #: 6101

Aliases

LAMB1; Laminin Subunit Beta 1; Laminin Subunit Beta-1; Laminin B1 Chain; Laminin, Beta 1; CLM; Cutis Laxa With Marfanoid Phenotype; Laminin-10 Subunit Beta; Laminin-12 Subunit Beta; Laminin-1 Subunit Beta; Laminin-2 Subunit Beta; Laminin-6 Subunit Beta; Laminin-8 Subunit Beta; LIS5

Background

Gene Name: LAMB1

NCBI Gene Entry: [3912](#)

UniProt Entry: [P07942](#)

Application Information

Molecular Weight: Predicted, 198 kDa; observed, 250 kDa

Clonality: Rabbit monoclonal antibody

Clone ID: 25GB6870

Species Reactivity: Human, mouse, rat

Applications Tested: Western blotting (WB)

Immunogen

A synthesized peptide derived from human LAMB1

Isotype

Rabbit IgG

Storage Buffer

Supplied in PBS (pH 7.4) containing 50% glycerol, and 0.02% sodium azide.

Storage

Store at -20 °C for one year.

Recommended Dilutions

Western Blotting (WB): 1:1,000-1:5,000

Note: This product is for research use only.

Validation Data

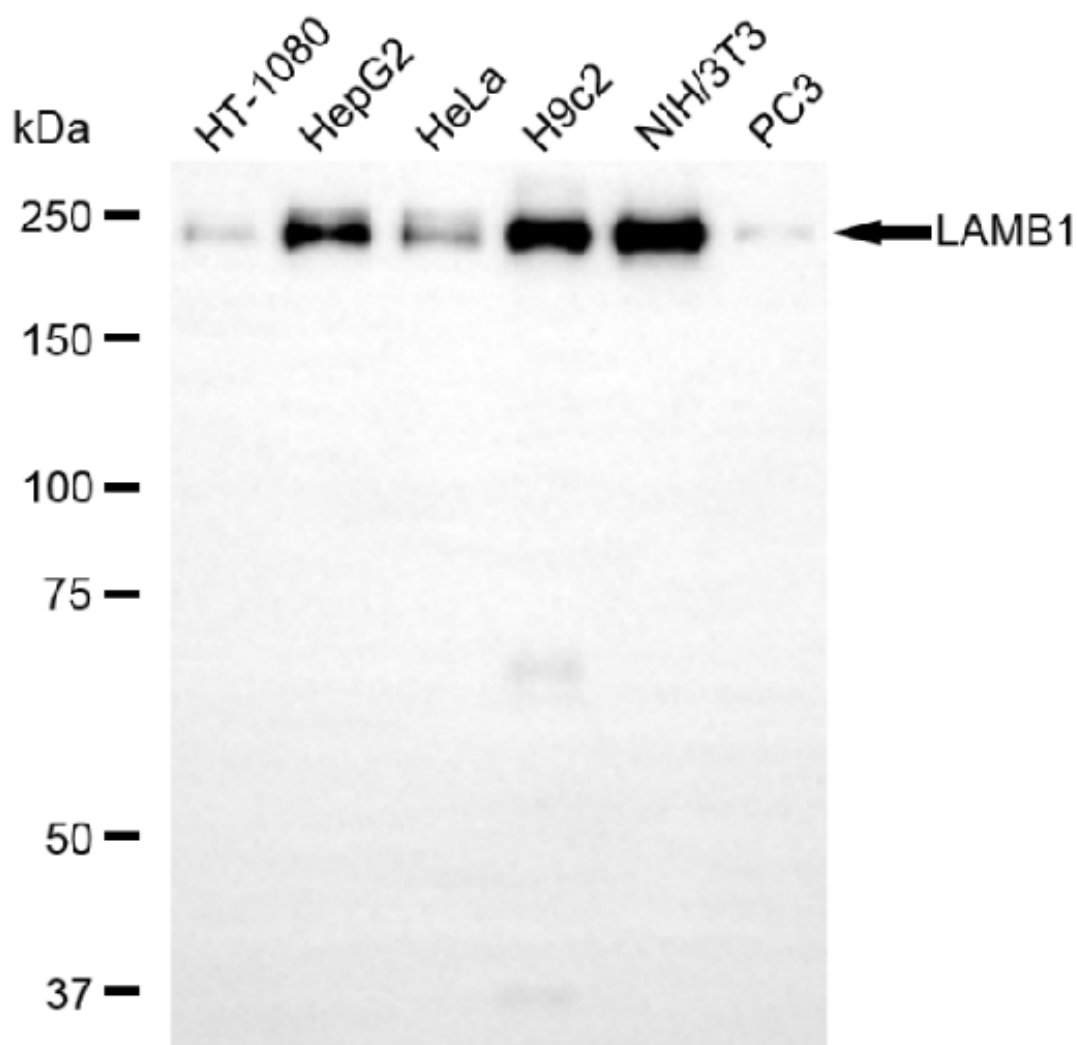
SUPPORT

SUPPORT@GENUINBIOTECH.COM
TEL: +1-540-855-7041

ORDERS

SALES@GENUINBIOTECH.COM
FAX: +1-540-855-7041

WWW.GENUINBIOTECH.COM



Copyright ©2025 Genuin Biotechnologies LLC

Western blotting analysis using anti-LAMB1 antibody (Cat#6101). Total cell lysates (30 μ g) from various cell lines were loaded and separated by SDS-PAGE. The blot was incubated with anti-LAMB1 antibody (Cat#6101, 1:5,000) and HRP-conjugated goat anti-rabbit secondary antibody (Cat#201, 1:20,000) respectively. Image was developed using NaQ™ ECL Substrate Kit (Cat#716).