

KD-Validated Anti-ABCB1 Recombinant Rabbit Monoclonal Antibody



Catalog #: 61111

Aliases

ABCB1; ATP Binding Cassette Subfamily B Member 1; PGY1; Multidrug Resistance Protein 1; CD243; GP170; ABC20; P-170; MDR1; ATP-Binding Cassette, Sub-Family B (MDR/TAP), Member 1; ATP-Dependent Translocase ABCB1; Phospholipid Transporter ABCB1; Colchicin Sensitivity; P-Glycoprotein 1; CLCS; P-GP; ATP-Binding Cassette Sub-Family B Member 1; Doxorubicin Resistance; P-Glycoprotein; CD243 Antigen; EC 3.6.3.44; EC 7.6.2.2; EC 7.6.2.1; EC 3.6.3; P-Gp

Background

Gene Name: ABCB1

NCBI Gene Entry: [5243](#)

UniProt Entry: [P08183](#)

Application Information

Molecular Weight: Predicted, 141 kDa, observed, 130-180 kDa

Clonality: Rabbit monoclonal antibody

Clone ID: 23GB1330

Species Reactivity: Human, mouse, rat

Applications Tested: Western blotting (WB), immunocytochemistry (IC)

Immunogen

A synthesized peptide derived from human P Glycoprotein

Isotype

Rabbit IgG

Storage Buffer

Supplied in PBS (pH 7.4) containing 50% glycerol, and 0.02% sodium azide.

Storage

Store at -20 °C for one year.

Recommended Dilutions

Western Blotting (WB): 1:1,000-1:5,000

Immunocytochemistry (IC): 1:100-1:1,000

SUPPORT

SUPPORT@GENUINBIOTECH.COM
TEL: +1-540-855-7041

ORDERS

SALES@GENUINBIOTECH.COM
FAX: +1-540-855-7041

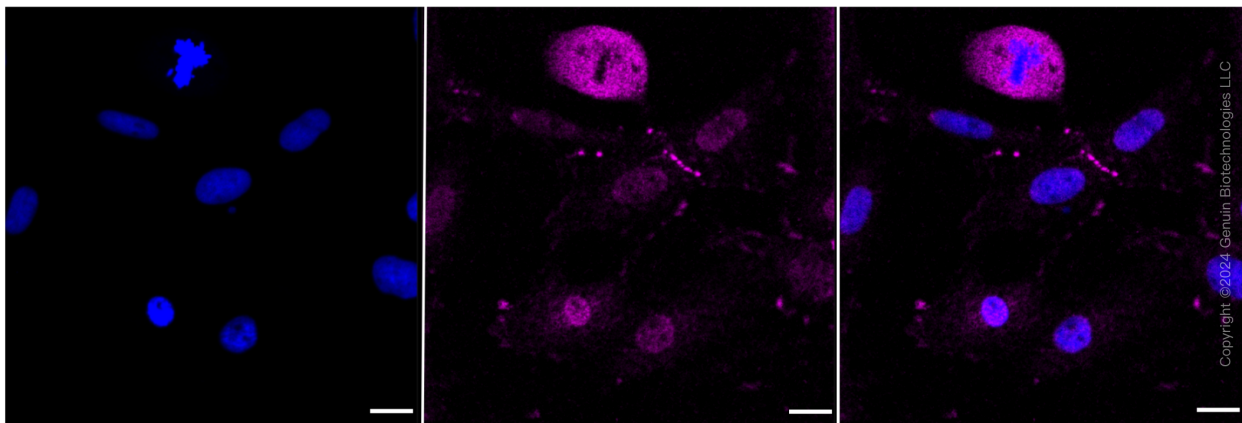
WWW.GENUINBIOTECH.COM

KD-Validated Anti-ABCB1 Recombinant Rabbit Monoclonal Antibody

PAGE 2

Note: This product is for research use only.

Validation Data



Immunocytochemical staining of HepG2 cells with ABCB1 antibody (Cat#61111, 1:1,000). Nuclei were stained blue with DAPI; ABCB1 was stained magenta with Alexa Fluor® 647. Images were taken using Leica stellaris 5. Protein abundance based on laser Intensity and smart gain: Low. Scale bar: 20 μ m.

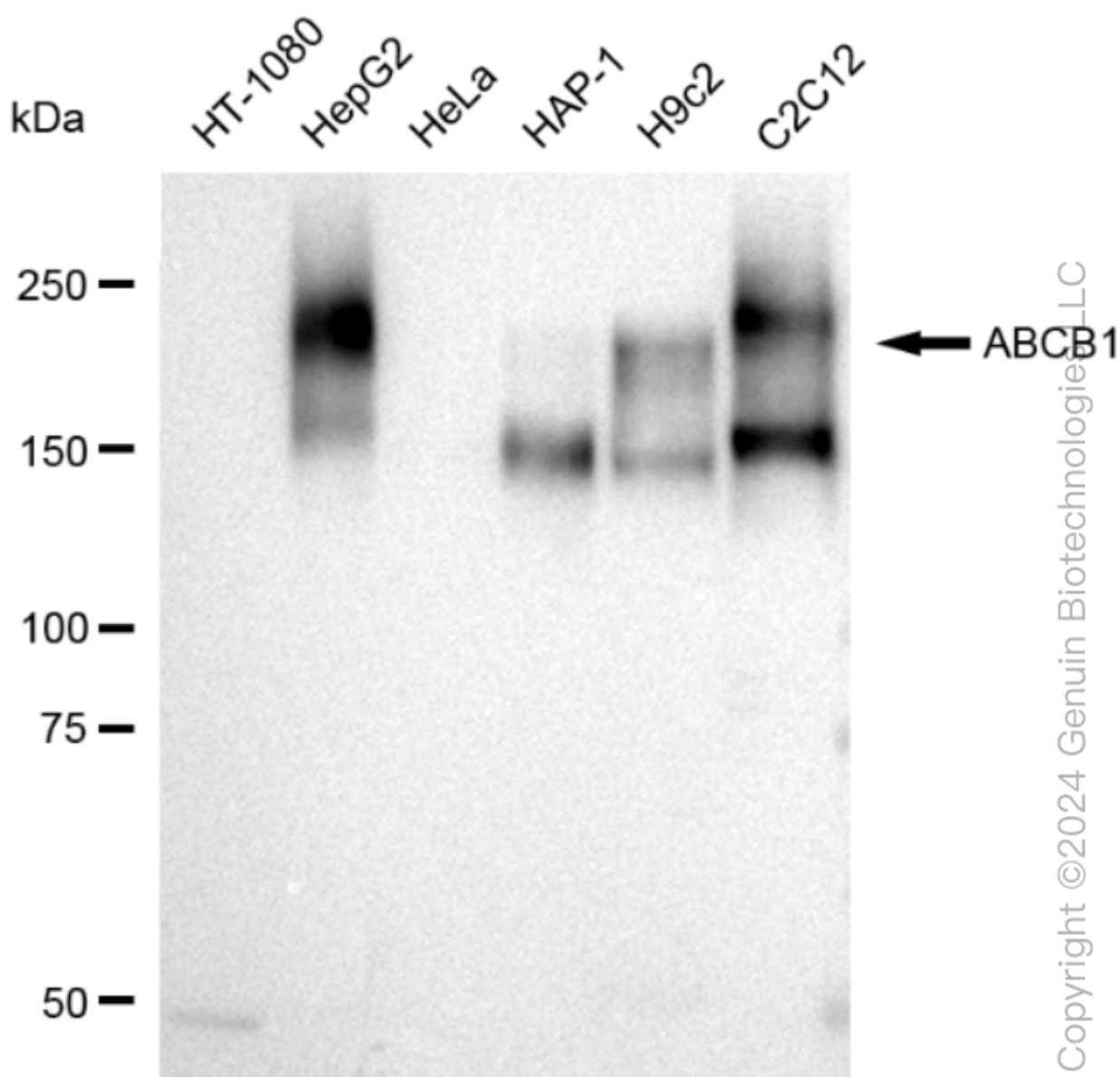
SUPPORT

SUPPORT@GENUINBIOTECH.COM
TEL: +1-540-855-7041

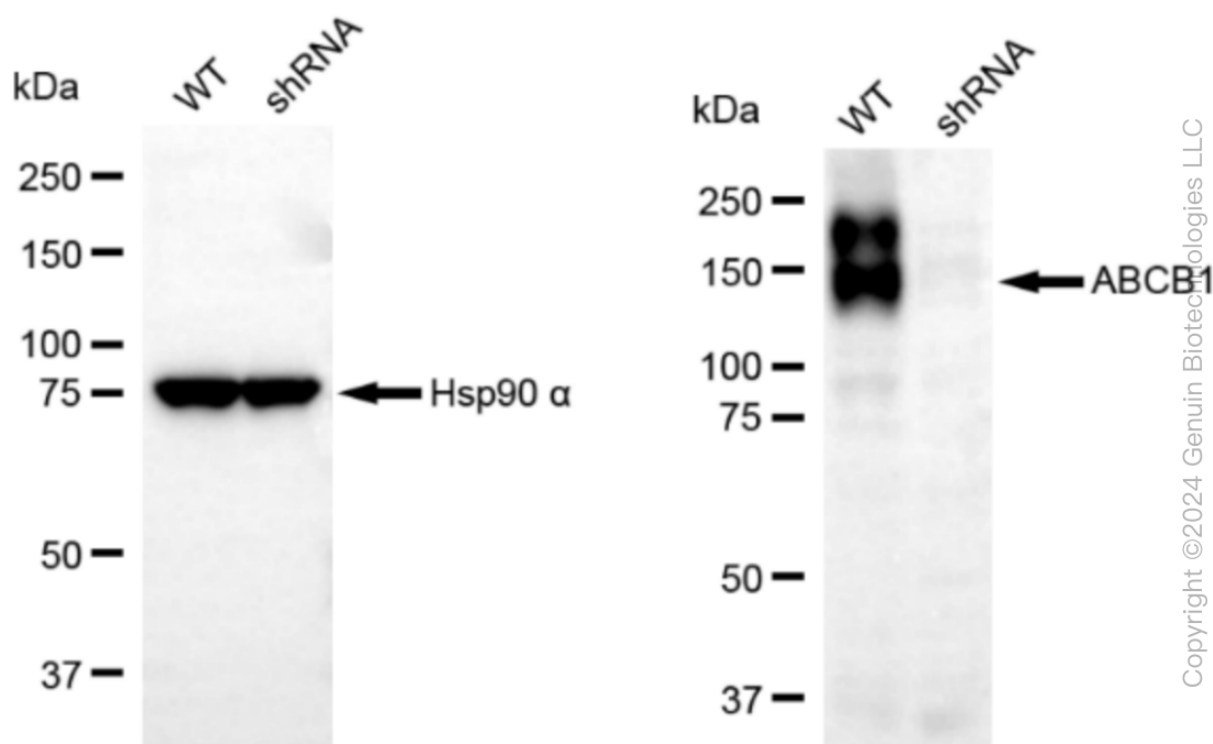
ORDERS

SALES@GENUINBIOTECH.COM
FAX: +1-540-855-7041

WWW.GENUINBIOTECH.COM



Western blotting analysis using anti-ABCB1 antibody (Cat#61111). Total cell lysates (30 µg) from various cell lines were loaded and separated by SDS-PAGE. The blot was incubated with anti-ABCB1 antibody (Cat#61111, 1:5,000) and HRP-conjugated goat anti-rabbit secondary antibody (Cat#201, 1:20,000) respectively. Image was developed using FeQ™ ECL Substrate Kit (Cat#226). ABCB1, ATP binding cassette subfamily B member 1.



Western blotting analysis using anti-ABCB1 antibody (Cat#61111). ABCB1 expression in wild type (WT) and ABCB1 shRNA knockdown (KD) HeLa cells with 30 μ g of total cell lysates. Hsp90 α serves as a loading control. The blot was incubated with anti-ABCB1 antibody (Cat#61111, 1:5,000) and HRP-conjugated goat anti-rabbit secondary antibody (Cat#201, 1:20,000) respectively. Image was developed using FeQ™ ECL Substrate Kit (Cat#226).