

KD-Validated Anti-TMEM173 Recombinant Rabbit Monoclonal Antibody



Catalog #: 61113

Aliases

STING1; Stimulator Of Interferon Response CGAMP Interactor 1; STING; ERIS; MITA; Transmembrane; Protein 173; TMEM173; NET23; MPYS; Endoplasmic Reticulum Interferon Stimulator; Stimulator Of Interferon Genes Protein; Endoplasmic Reticulum IFN Stimulator; FLJ38577; HSTING; HMITA; N-Terminal Methionine-Proline-Tyrosine-Serine Plasma Membrane Tetraspanner; Mitochondrial Mediator Of IRF3 Activation; Stimulator Of Interferon Protein; Stimulator Of Interferon Gene; Mediator Of IRF3 Activation; STING-Beta; Sting 1; SAVI

Background

Gene Name: STING1

NCBI Gene Entry: [340061](#)

UniProt Entry: [Q86WV6](#)

Application Information

Molecular Weight: Predicted, 42 kDa, observed, 35 kDa

Clonality: Rabbit monoclonal antibody

Clone ID: 24GB5890

Species Reactivity: Human

Applications Tested: Western blotting (WB), flow cytometry (FCM), immunocytochemistry (IC)

Immunogen

A synthesized peptide derived from human TMEM173

Isotype

Rabbit IgG

Storage Buffer

Supplied in PBS (pH 7.4) containing 50% glycerol, and 0.02% sodium azide.

Storage

Store at -20 °C for one year.

Recommended Dilutions

Western Blotting (WB): 1:1,000-1:5,000

Flow Cytometry (FCM): 1:2,000

Immunocytochemistry (IC): 1:100-1:1,000

SUPPORT

SUPPORT@GENUINBIOTECH.COM
TEL: +1-540-855-7041

ORDERS

SALES@GENUINBIOTECH.COM
FAX: +1-540-855-7041

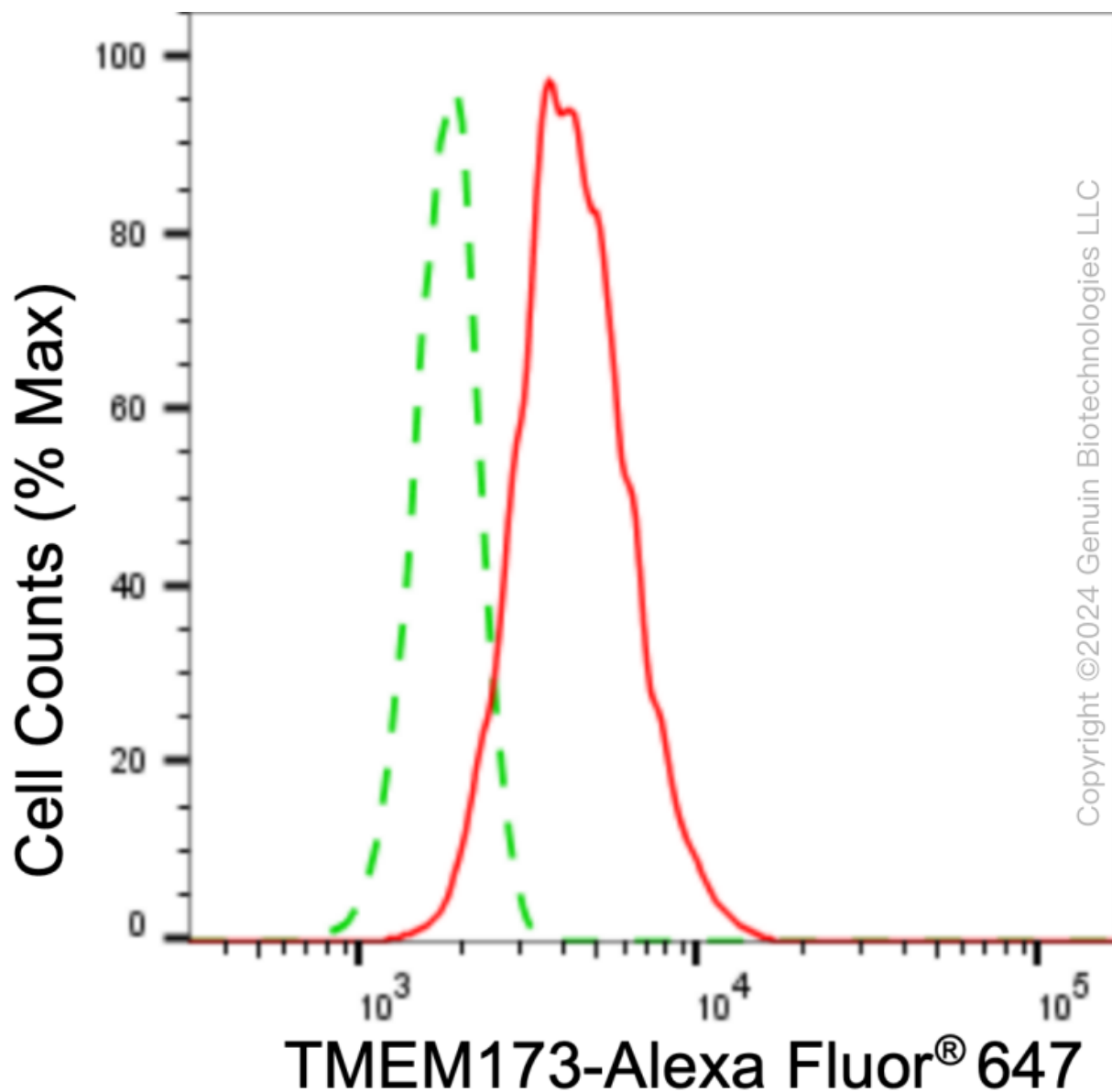
WWW.GENUINBIOTECH.COM

KD-Validated Anti-TMEM173 Recombinant Rabbit Monoclonal Antibody

PAGE 2

Note: This product is for research use only.

Validation Data



Flow cytometric analysis of TMEM173 expression in HT-1080 cells using TMEM173 antibody (Cat#61113, 1:2,000). Green, isotype control; red, TMEM173.

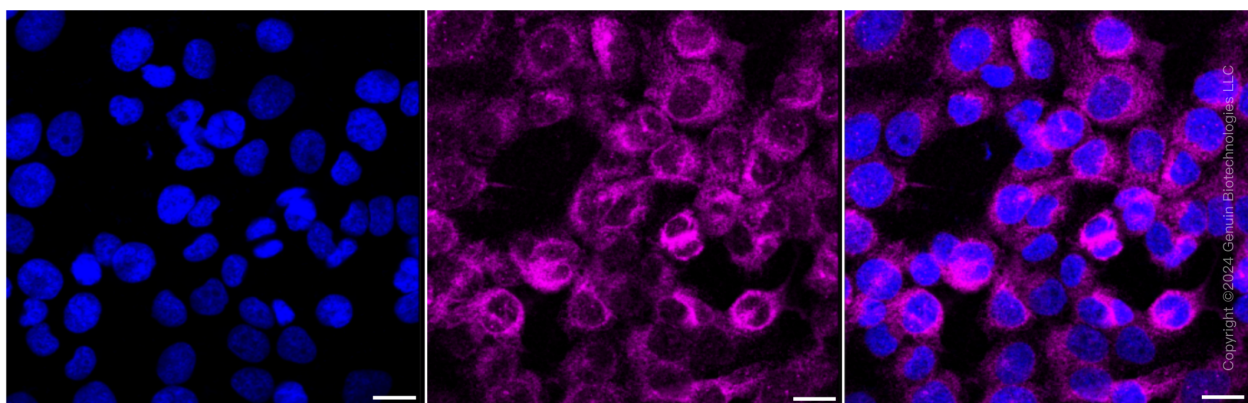
SUPPORT

SUPPORT@GENUINBIOTECH.COM
TEL: +1-540-855-7041

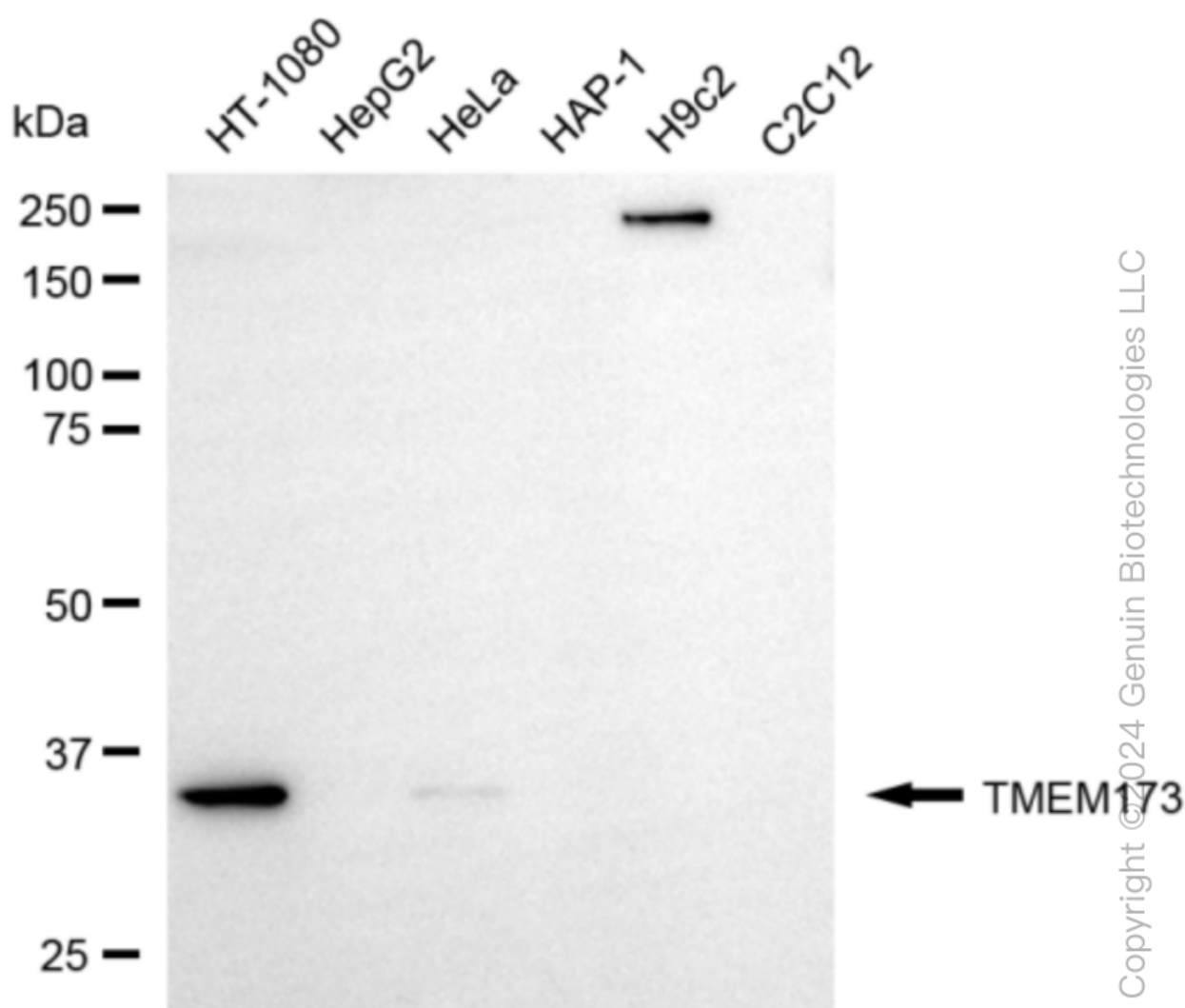
ORDERS

SALES@GENUINBIOTECH.COM
FAX: +1-540-855-7041

WWW.GENUINBIOTECH.COM



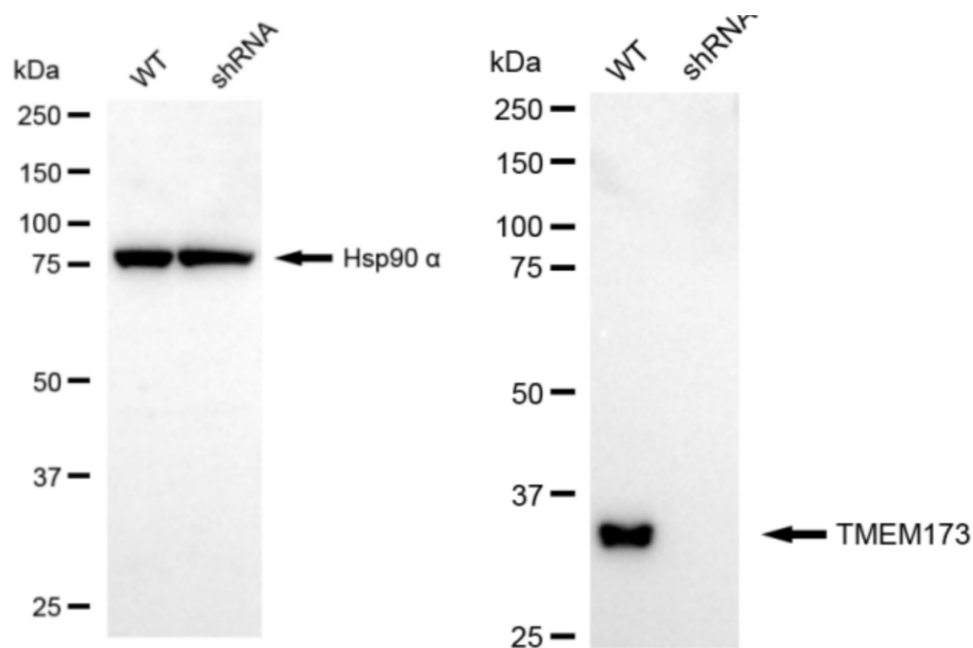
Immunocytochemical staining of HT-1080 cells with TMEM173 antibody (Cat#61113, 1:1,000). Nuclei were stained blue with DAPI; TMEM173 was stained magenta with Alexa Fluor® 647. Images were taken using Leica stellaris 5. Protein abundance based on laser Intensity and smart gain: Medium. Scale bar: 20 μ m.



KD-Validated Anti-TMEM173 Recombinant Rabbit Monoclonal Antibody

PAGE 4

Western blotting analysis using anti-TMEM173 antibody (Cat#61113). Total cell lysates (30 µg) from various cell lines were loaded and separated by SDS-PAGE. The blot was incubated with anti-TMEM173 antibody (Cat#61113, 1:5,000) and HRP-conjugated goat anti-rabbit secondary antibody (Cat#201, 1:20,000) respectively. Image was developed using NaQ™ ECL Substrate Kit (Cat#716).



Copyright ©2024 Genuin Biotechnologies LLC

Western blotting analysis using anti-TMEM173 antibody (Cat#61113). TMEM173 expression in wild type (WT) and STING1 shRNA knockdown (KD) HeLa cells with 20 µg of total cell lysates. Hsp90 α serves as a loading control. The blot was incubated with anti-TMEM173 antibody (Cat#61113, 1:5,000) and HRP-conjugated goat anti-rabbit secondary antibody (Cat#201, 1:20,000) respectively. Image was developed using NaQ™ ECL Substrate Kit (Cat#716). STING1, Stimulator Of Interferon Response CGAMP Interactor 1.

SUPPORT

SUPPORT@GENUINBIOTECH.COM
TEL: +1-540-855-7041

ORDERS

SALES@GENUINBIOTECH.COM
FAX: +1-540-855-7041

WWW.GENUINBIOTECH.COM