

# KD-Validated Anti-Rab9 Recombinant Rabbit Monoclonal Antibody



**Catalog #: 61120**

## Aliases

RAB9A; RAB9A, Member RAS Oncogene Family; RAB9; RAB9, Member RAS Oncogene Family; Ras-Related Protein Rab-9A

## Background

Gene Name: RAB9A

NCBI Gene Entry: [9367](#)

UniProt Entry: [P51151](#)

## Application Information

Molecular Weight: Predicted, 23 kDa, observed, 23 kDa

Clonality: Rabbit monoclonal antibody

Clone ID: 23GB1940

Species Reactivity: Human, mouse, rat

Applications Tested: Western blotting (WB), flow cytometry (FCM), immunocytochemistry (IC)

## Immunogen

A synthesized peptide derived from human Rab9

## Isotype

Rabbit IgG

## Storage Buffer

Supplied in PBS (pH 7.4) containing 50% glycerol, and 0.02% sodium azide.

## Storage

Store at -20 °C for one year.

## Recommended Dilutions

Western Blotting (WB): 1:1,000-1:5,000

Flow Cytometry (FCM): 1:2,000

Immunocytochemistry (IC): 1:100-1:1,000

**Note:** This product is for research use only.

## Validation Data

---

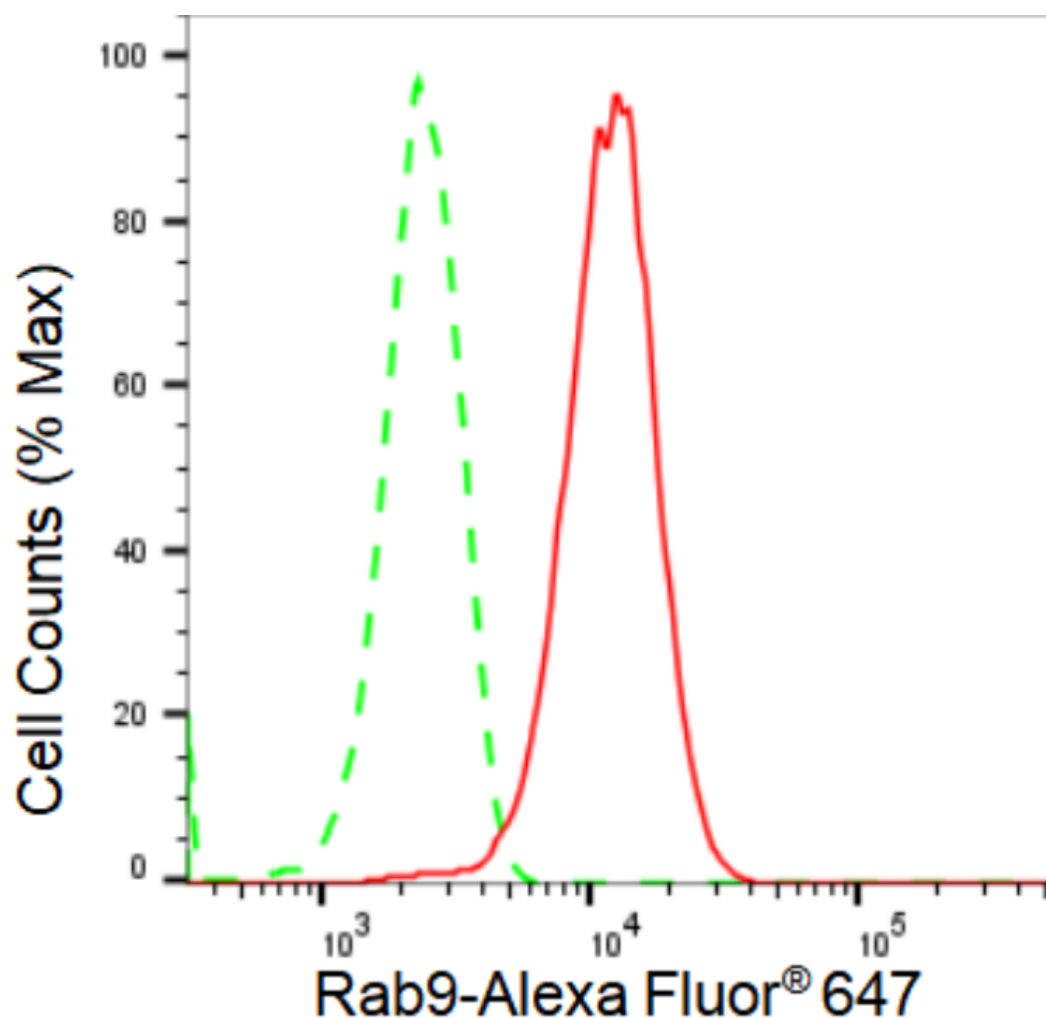
### SUPPORT

SUPPORT@GENUINBIOTECH.COM  
TEL: +1-540-855-7041

### ORDERS

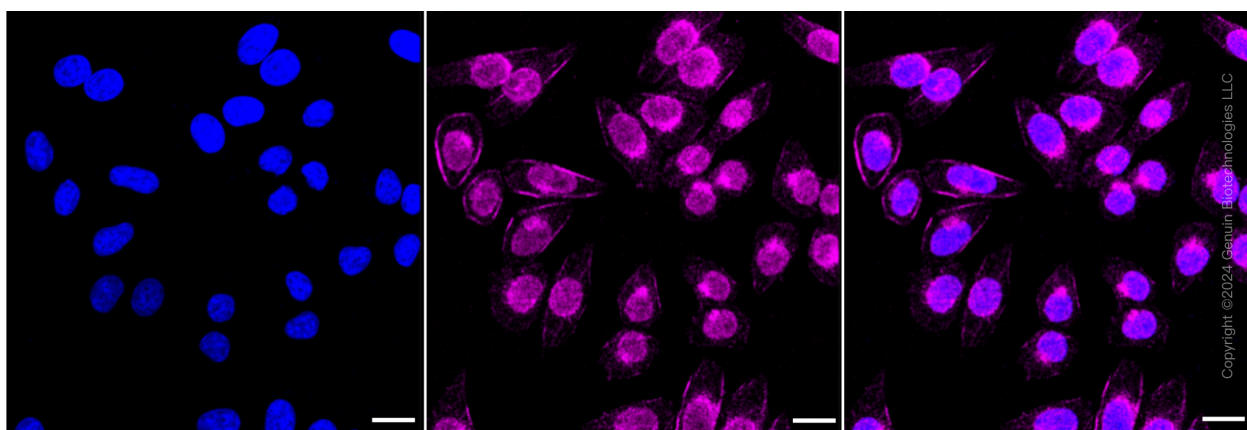
SALES@GENUINBIOTECH.COM  
FAX: +1-540-855-7041

[WWW.GENUINBIOTECH.COM](http://WWW.GENUINBIOTECH.COM)



Copyright ©2024 Genuin Biotechnologies LLC

Flow cytometric analysis of Rab9 expression in HepG2 cells using Rab9 antibody (Cat#61120, 1:2,000). Green, isotype control; red, Rab9.



Immunocytochemical staining of HepG2 cells with Rab9 antibody (Cat#61120, 1:1,000). Nuclei were stained blue with DAPI; Rab9 was stained magenta with Alexa Fluor® 647. Images were taken using Leica stellaris 5. Protein abundance based on laser Intensity and smart gain: Medium.

**SUPPORT**

SUPPORT@GENUINBIOTECH.COM  
TEL: +1-540-855-7041

**ORDERS**

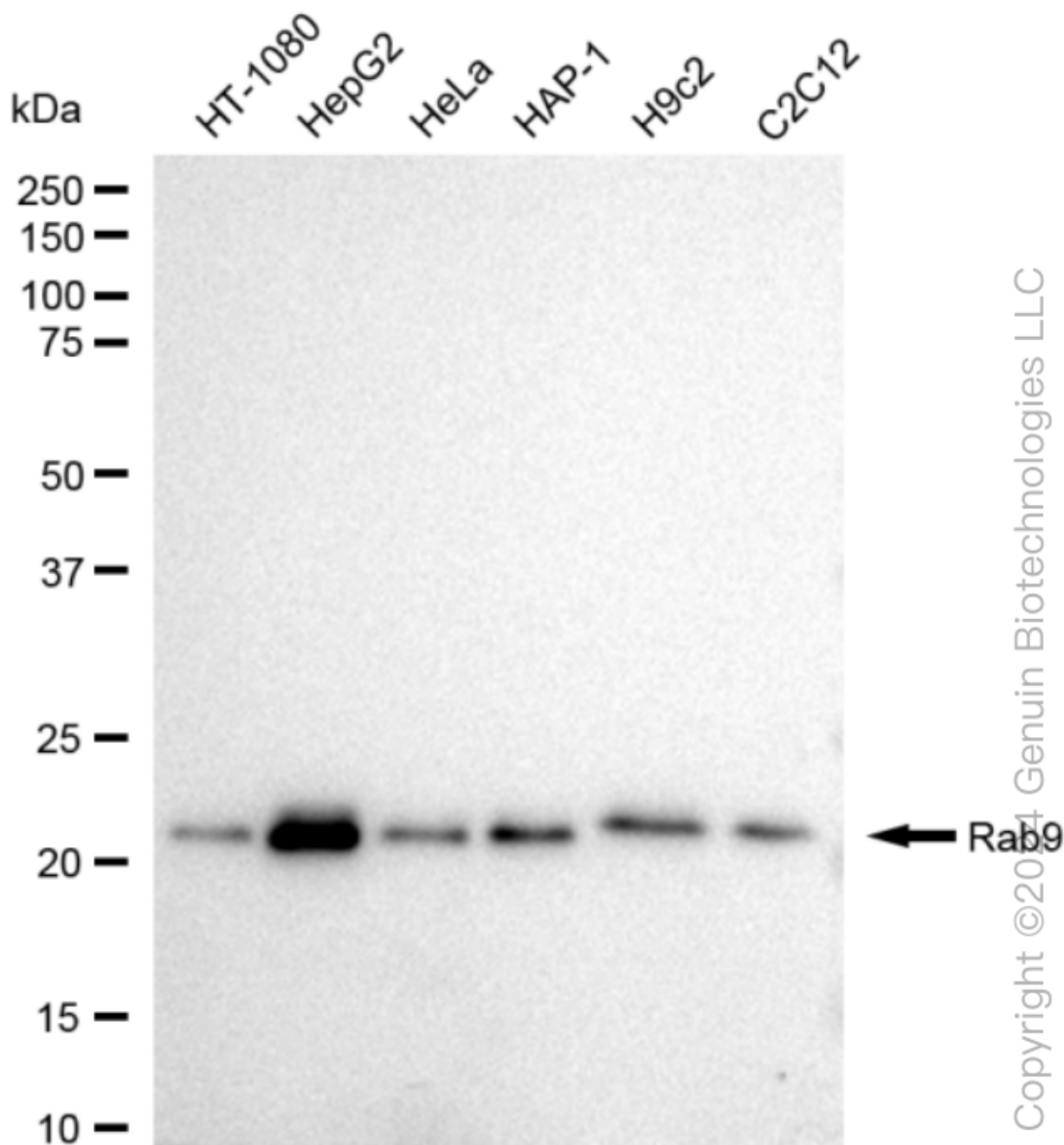
SALES@GENUINBIOTECH.COM  
FAX: +1-540-855-7041

**WWW.GENUINBIOTECH.COM**

## KD-Validated Anti-Rab9 Recombinant Rabbit Monoclonal Antibody

PAGE 3

Scale bar: 20  $\mu$ m.



Western blotting analysis using anti-Rab9 antibody (Cat#61120). Total cell lysates (30  $\mu$ g) from various cell lines were loaded and separated by SDS-PAGE. The blot was incubated with anti-Rab9 antibody (Cat#61120, 1:5,000) and HRP-conjugated goat anti-rabbit secondary antibody (Cat#201, 1:20,000) respectively. Image was developed using FeQ™ ECL Substrate Kit (Cat#226).

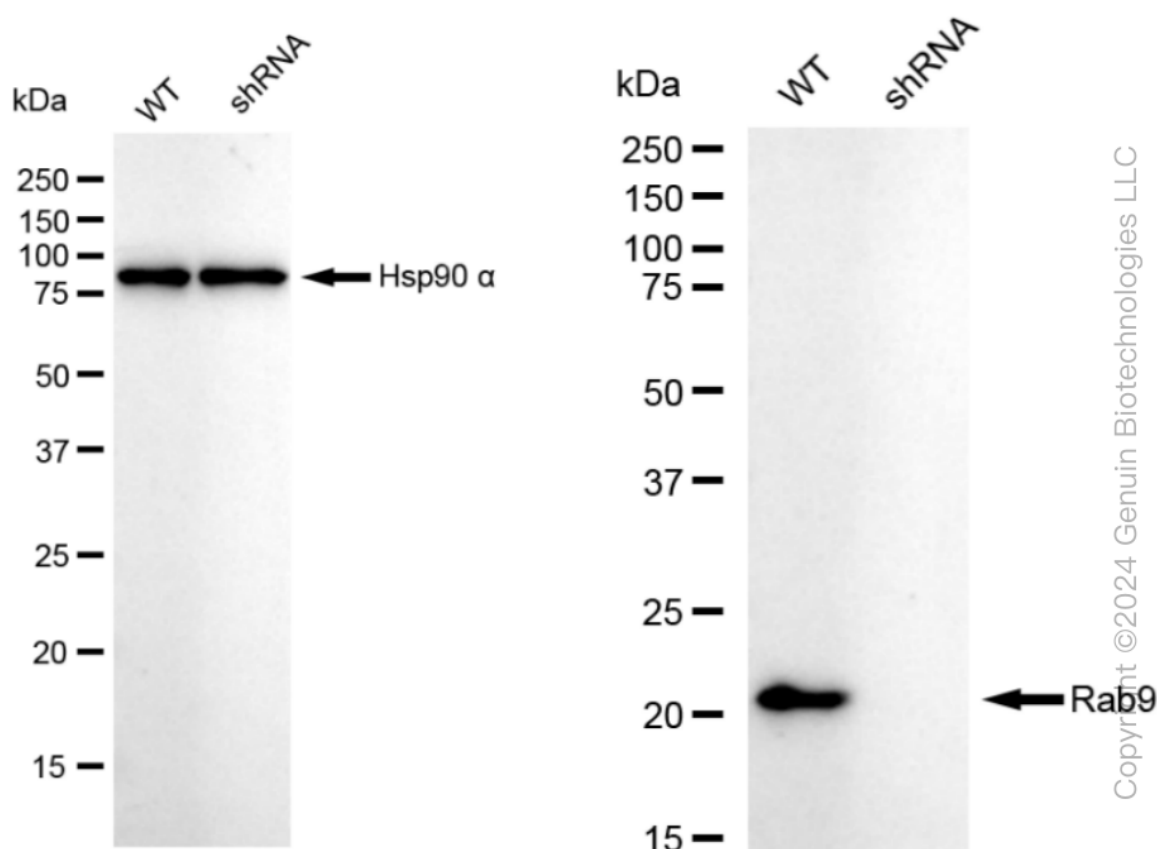
### SUPPORT

SUPPORT@GENUINBIOTECH.COM  
TEL: +1-540-855-7041

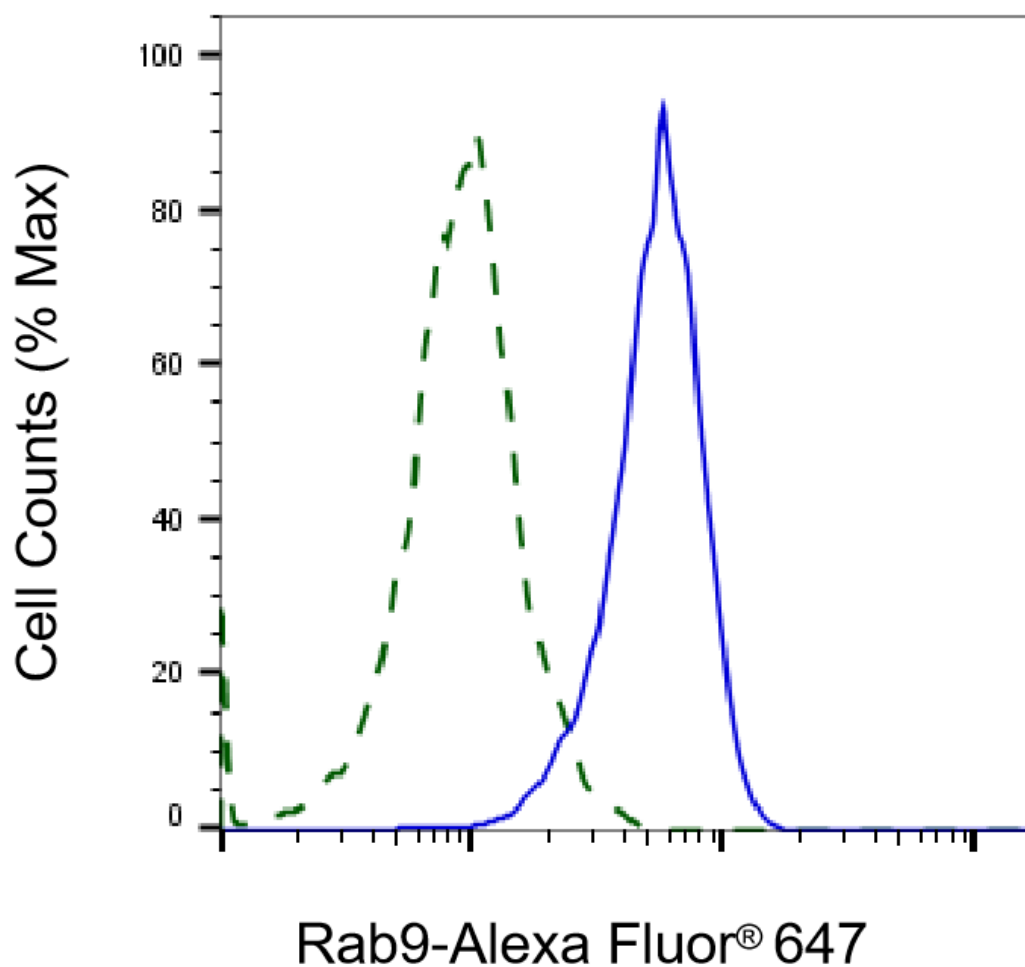
### ORDERS

SALES@GENUINBIOTECH.COM  
FAX: +1-540-855-7041

[WWW.GENUINBIOTECH.COM](http://WWW.GENUINBIOTECH.COM)

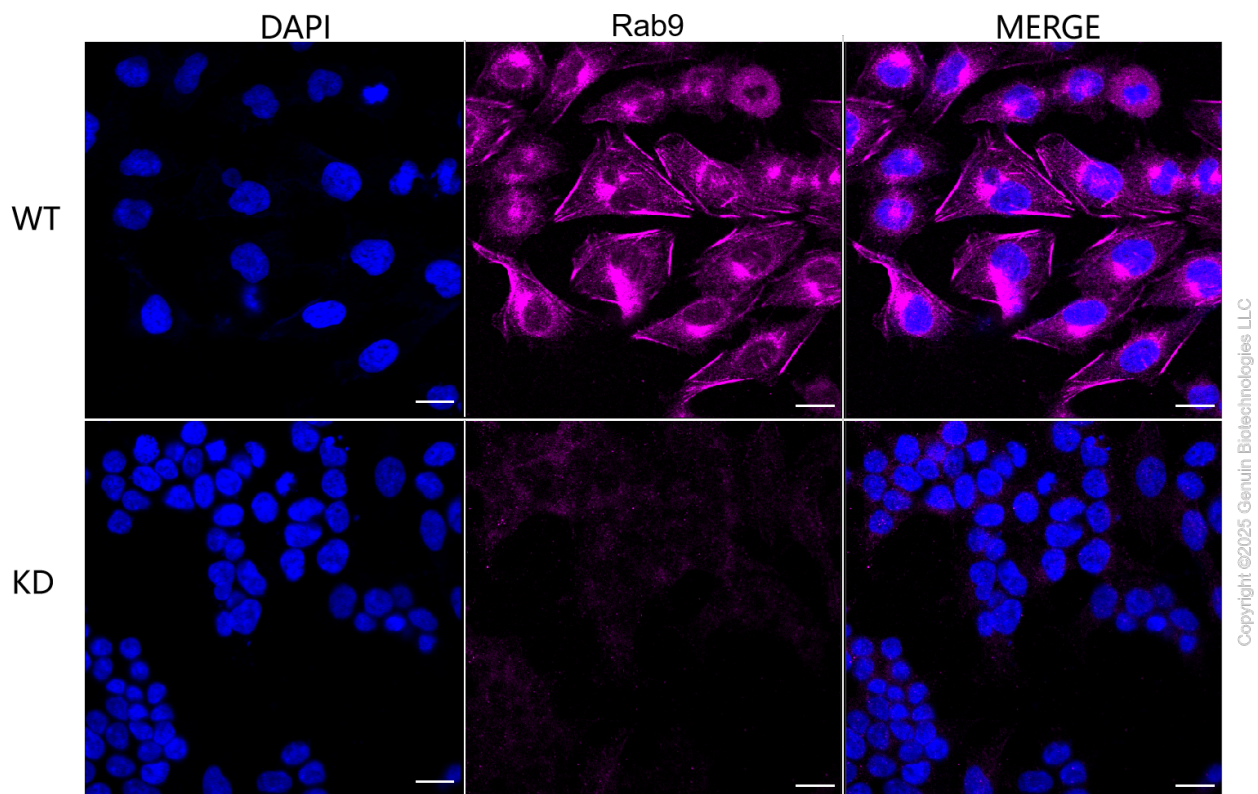


Western blotting analysis using anti-Rab9 antibody (Cat#61120). Rab9 expression in wild type (WT) and Rab9 shRNA knockdown (KD) Hela cells with 30 µg of total cell lysates. β-Tubulin serves as a loading control. The blot was incubated with anti-Rab9 antibody (Cat#61120, 1:5,000) and HRP-conjugated goat anti-rabbit secondary antibody (Cat#201, 1:20,000) respectively. Image was developed using FeQ™ ECL Substrate Kit (Cat#226).



Copyright ©2025 Genuin Biotechnologies LLC

Validation of Rab9 knockdown using flow cytometry. Wild-type(WT, Blue) and knockdown(KD, Green) HeLa cells were stained with anti-Rab9 antibody (Cat#61120, 1:2,000) and analyzed using CytoFLEX.



Immunocytochemical staining of HeLa cells using anti-Rab9 antibody (Cat#61120, 1:1,000), Top panel: wild-type (WT); Bottom panel: Rab9 shRNA knockdown (KD). Nuclei were stained blue with DAPI; Rab9 was stained magenta with Alexa Fluor® 647. Scale bar, 20  $\mu$ m. Permeabilization: Triton.