

# KD-Validated Anti-Laminin gamma 1 Recombinant Rabbit Monoclonal Antibody



## Catalog #: 61123

### Aliases

LAMC1; Laminin Subunit Gamma 1; Laminin B2 Chain; LAMB2; Laminin, Gamma 1 (Formerly LAMB2); Laminin-10 Subunit Gamma; Laminin-11 Subunit Gamma; Laminin Subunit Gamma-1; S-Laminin Subunit Gamma; Laminin-2 Subunit Gamma; Laminin-3 Subunit Gamma; Laminin-4 Subunit Gamma; Laminin-6 Subunit Gamma; Laminin-7 Subunit Gamma; Laminin-8 Subunit Gamma; Laminin-9 Subunit Gamma; S-LAM Gamma; Laminin-1 Subunit Gamma

### Background

Gene Name: LAMC1

NCBI Gene Entry: [3915](#)

UniProt Entry: [P11047](#)

### Application Information

Molecular Weight: Predicted, 178 kDa, observed, 220-250 kDa

Clonality: Rabbit monoclonal antibody

Clone ID: 24GB5925

Species Reactivity: Human

Applications Tested: Western blotting (WB), flow cytometry (FCM), immunocytochemistry (IC)

### Immunogen

A synthesized peptide derived from human Laminin gamma 1

### Isotype

Rabbit IgG

### Storage Buffer

Supplied in PBS (pH 7.4) containing 50% glycerol, and 0.02% sodium azide.

### Storage

Store at -20 °C for one year.

### Recommended Dilutions

Western Blotting (WB): 1:1,000-1:5,000

Flow Cytometry (FCM): 1:2,000

Immunocytochemistry (IC): 1:100-1:1,000

---

#### SUPPORT

SUPPORT@GENUINBIOTECH.COM  
TEL: +1-540-855-7041

#### ORDERS

SALES@GENUINBIOTECH.COM  
FAX: +1-540-855-7041

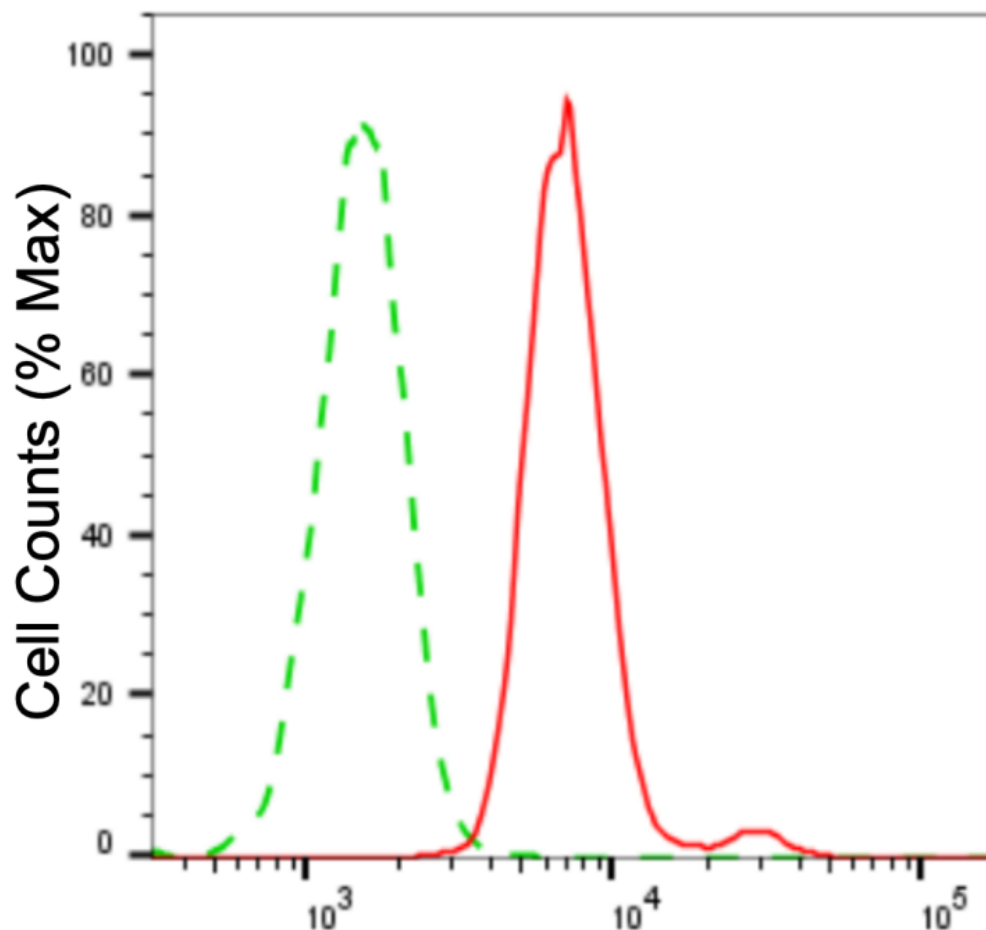
[WWW.GENUINBIOTECH.COM](http://WWW.GENUINBIOTECH.COM)

## KD-Validated Anti-Laminin gamma 1 Recombinant Rabbit Monoclonal Antibody

PAGE 2

**Note:** This product is for research use only.

### Validation Data



Copyright ©2024 Genuin Biotechnologies LLC

### Laminin subunit gamma 1-Alexa Fluor® 647

Flow cytometric analysis of laminin subunit gamma 1 expression in HAP-1 cells using anti-laminin subunit gamma 1 antibody (Cat#61123, 1:2,000). Green, isotype control; red, laminin subunit gamma 1.

#### SUPPORT

SUPPORT@GENUINBIOTECH.COM  
TEL: +1-540-855-7041

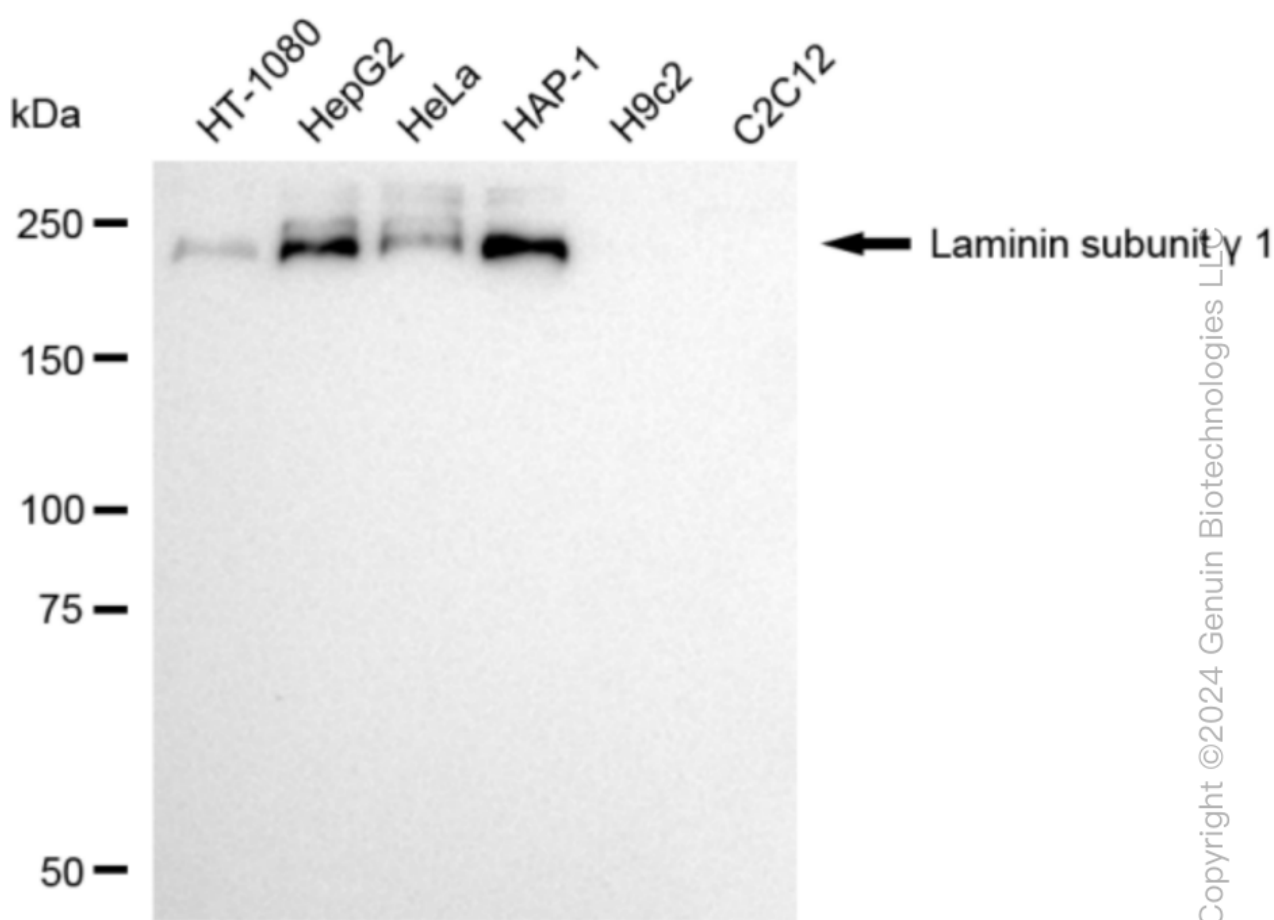
#### ORDERS

SALES@GENUINBIOTECH.COM  
FAX: +1-540-855-7041

WWW.GENUINBIOTECH.COM

## KD-Validated Anti-Laminin gamma 1 Recombinant Rabbit Monoclonal Antibody

PAGE 3



Western blotting analysis using anti-laminin subunit gamma 1 antibody (Cat#61123). Total cell lysates (30 µg) from various cell lines were loaded and separated by SDS-PAGE. The blot was incubated with anti-laminin subunit gamma 1 antibody (Cat#61123, 1:5,000) and HRP-conjugated goat anti-rabbit secondary antibody (Cat#201, 1:20,000) respectively. Image was developed using NaQ™ ECL Substrate Kit (Cat#716).

### SUPPORT

SUPPORT@GENUINBIOTECH.COM  
TEL: +1-540-855-7041

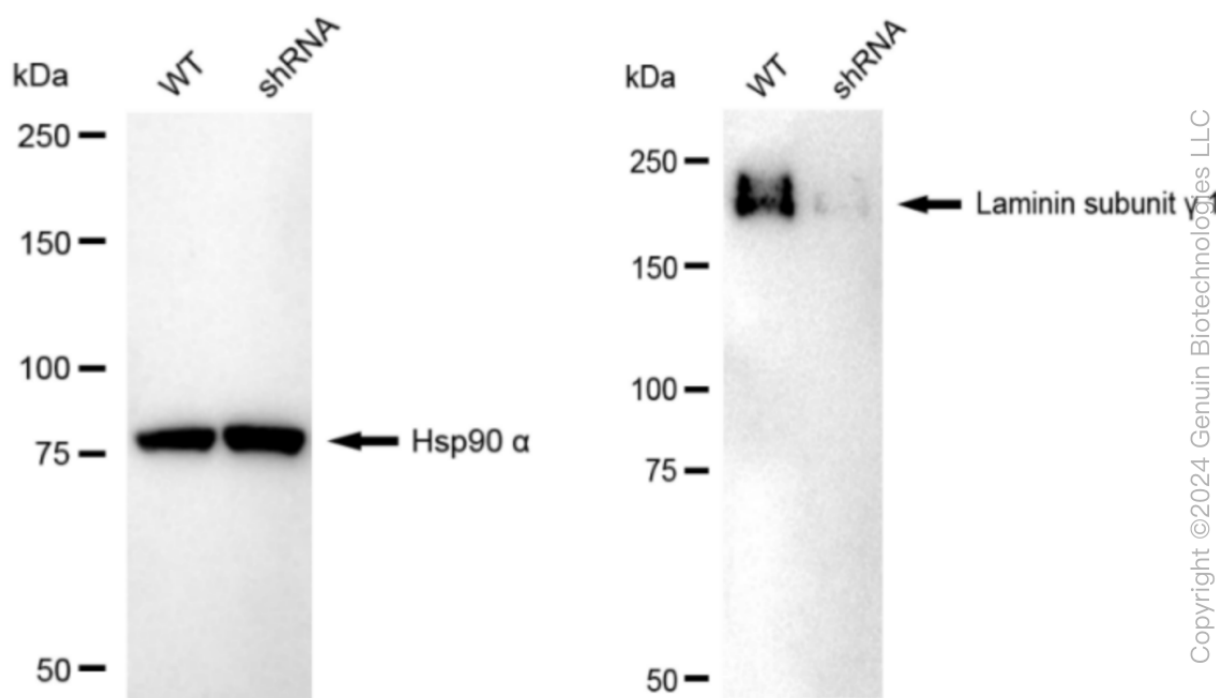
### ORDERS

SALES@GENUINBIOTECH.COM  
FAX: +1-540-855-7041

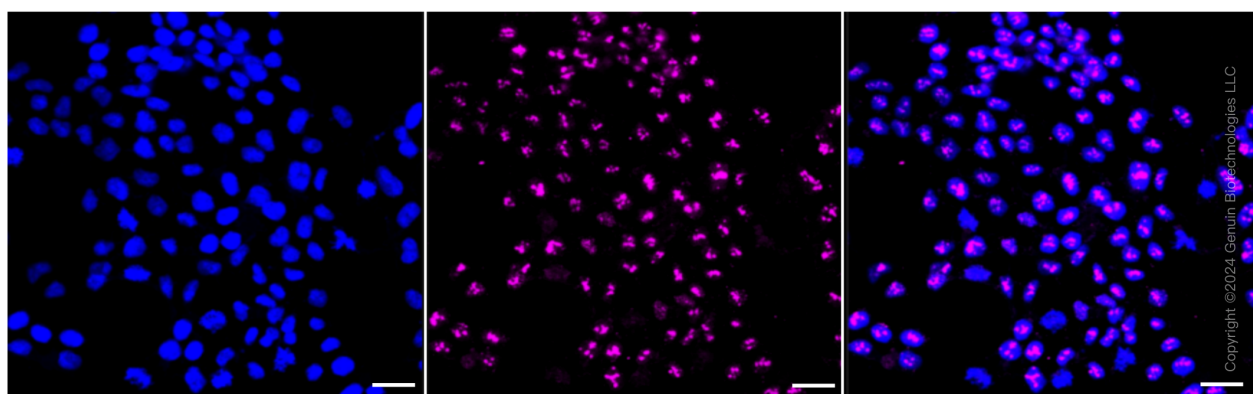
[WWW.GENUINBIOTECH.COM](http://WWW.GENUINBIOTECH.COM)

## KD-Validated Anti-Laminin gamma 1 Recombinant Rabbit Monoclonal Antibody

PAGE 4



Western blotting analysis using anti-laminin subunit  $\gamma$  1 antibody (Cat#61123). Laminin subunit  $\gamma$  1 expression in wild type (WT) and laminin subunit  $\gamma$  1 (LAMC1) shRNA knockdown (KD) HeLa cells with 20  $\mu$ g of total cell lysates. Hsp90  $\alpha$  serves as a loading control. The blot was incubated with anti-laminin subunit  $\gamma$  1 antibody (Cat#61123, 1:5,000) and HRP-conjugated goat anti-rabbit secondary antibody (Cat#201, 1:20,000) respectively. Image was developed using NaQ™ ECL Substrate Kit (Cat#716).



Immunocytochemical staining of HAP1 cells with anti-laminin subunit gamma 1 antibody (Cat#61123, 1:1,000). Nuclei were stained blue with DAPI; Laminin subunit gamma 1 was stained magenta with Alexa Fluor® 647. Images were taken using Leica stellaris 5. Protein abundance based on laser Intensity and smart gain: Medium. Scale bar: 20  $\mu$ m.

### SUPPORT

SUPPORT@GENUINBIOTECH.COM  
TEL: +1-540-855-7041

### ORDERS

SALES@GENUINBIOTECH.COM  
FAX: +1-540-855-7041

WWW.GENUINBIOTECH.COM