

KD-Validated Anti-MAP1LC3A Recombinant Rabbit Monoclonal Antibody



Catalog #: 61125

Aliases

MAP1LC3A; Microtubule Associated Protein 1 Light Chain 3 Alpha; MAP1BLC3; MAP1ALC3; ATG8E; LC3A; LC3; Microtubule-Associated Proteins 1A/1B Light Chain 3A; Autophagy-Related Ubiquitin-Like Modifier LC3 A; MAP1 Light Chain 3-Like Protein 1; MAP1A/MAP1B Light Chain 3 A; MAP1A/MAP1B LC3 A; Microtubule-Associated Protein 1 Light Chain 3 Alpha; Microtubule-Associated Proteins 1A/1B Light Chain 3; Autophagy-Related Protein LC3 A; MAP1A/1B Light Chain 3 A

Background

Gene Name: MAP1LC3A

NCBI Gene Entry: [84557](#)

UniProt Entry: [Q9H492](#)

Application Information

Molecular Weight: Predicted, 14 kDa, observed, 14,16 kDa

Clonality: Rabbit monoclonal antibody

Clone ID: 23GB1960

Species Reactivity: Human, mouse, rat

Applications Tested: Western blotting (WB), immunocytochemistry (IC)

Immunogen

A synthesized peptide derived from human MAP1LC3A

Isotype

Rabbit IgG

Storage Buffer

Supplied in PBS (pH 7.4) containing 50% glycerol, and 0.02% sodium azide.

Storage

Store at -20 °C for one year.

Recommended Dilutions

Western Blotting (WB): 1:4,000-1:20,000

Immunocytochemistry (IC): 1:100-1:1,000

SUPPORT

SUPPORT@GENUINBIOTECH.COM
TEL: +1-540-855-7041

ORDERS

SALES@GENUINBIOTECH.COM
FAX: +1-540-855-7041

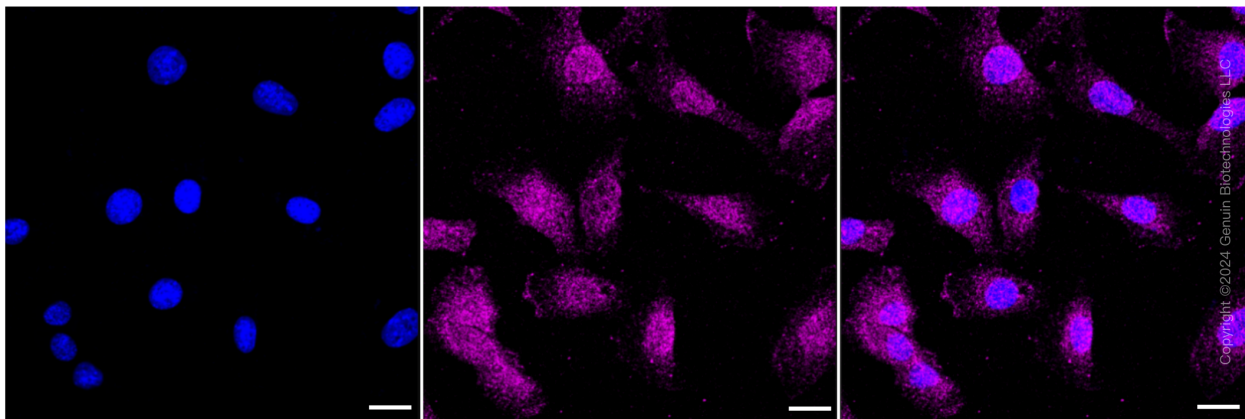
WWW.GENUINBIOTECH.COM

KD-Validated Anti-MAP1LC3A Recombinant Rabbit Monoclonal Antibody

PAGE 2

Note: This product is for research use only.

Validation Data



Immunocytochemical staining of C2C12 cells with MAP1LC3A antibody (Cat#61125, 1:1,000). Nuclei were stained blue with DAPI; MAP1LC3A was stained magenta with Alexa Fluor® 647. Images were taken using Leica stellaris 5. Protein abundance based on laser Intensity and smart gain: Medium. Scale bar: 20 μ m.

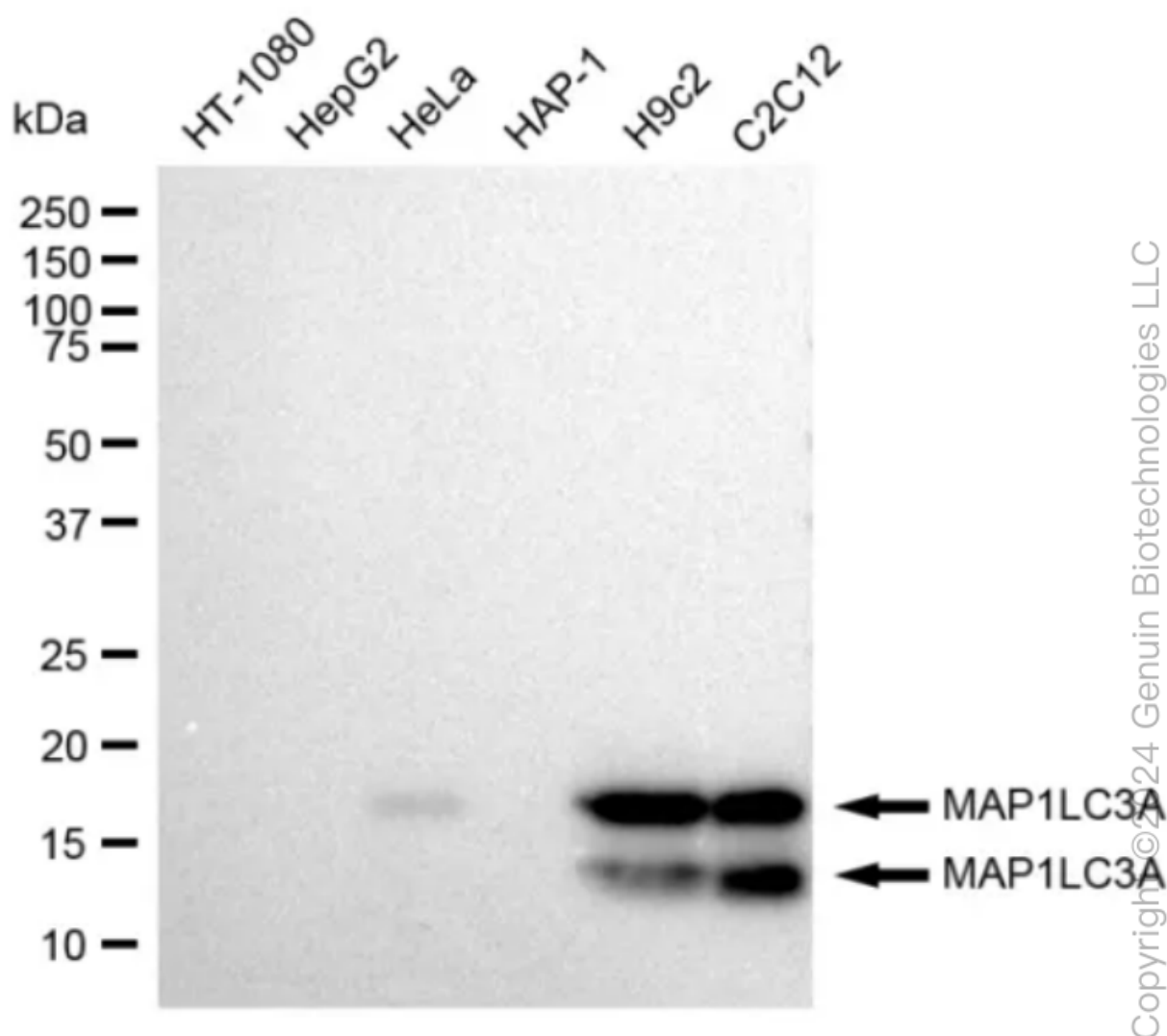
SUPPORT

SUPPORT@GENUINBIOTECH.COM
TEL: +1-540-855-7041

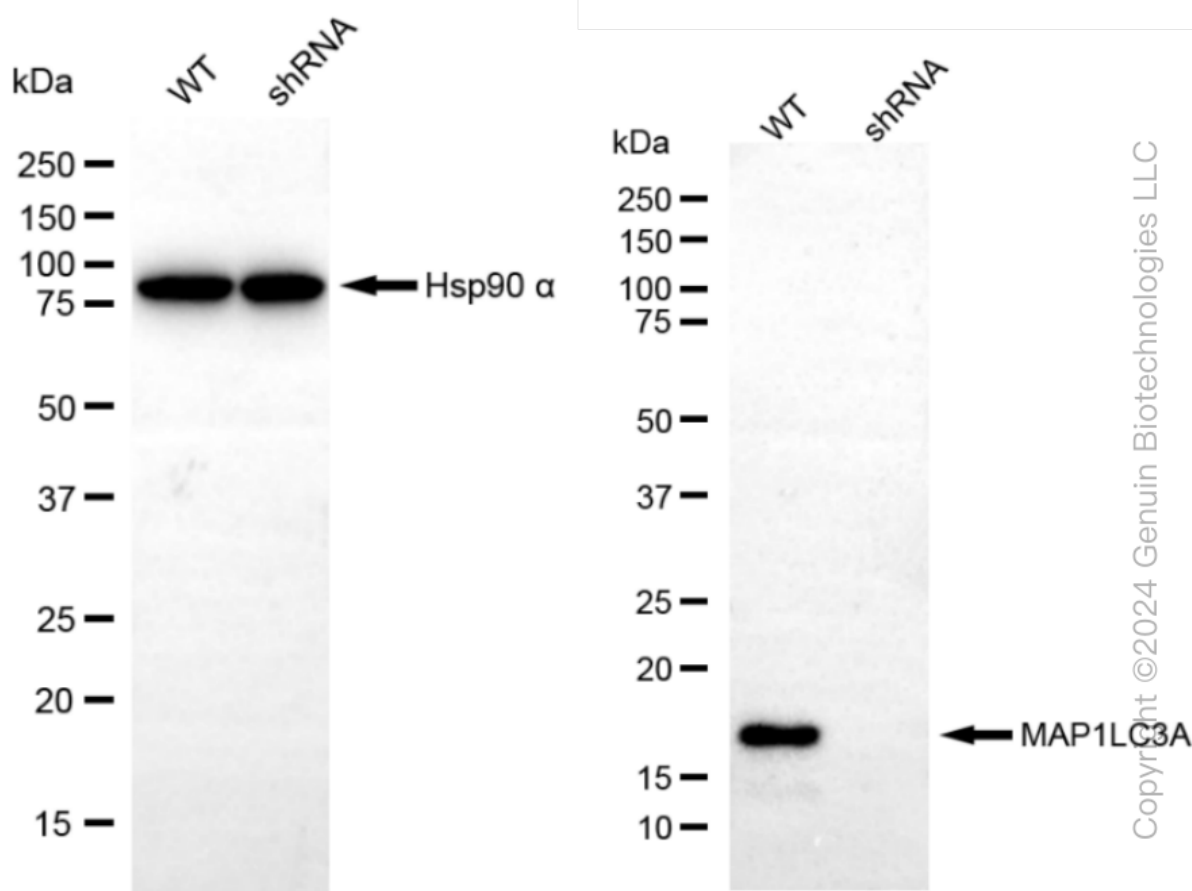
ORDERS

SALES@GENUINBIOTECH.COM
FAX: +1-540-855-7041

WWW.GENUINBIOTECH.COM



Western blotting analysis using anti-MAP1LC3A antibody (Cat#61125). Total cell lysates (30 µg) from various cell lines were loaded and separated by SDS-PAGE. The blot was incubated with anti-MAP1LC3A antibody (Cat#61125, 1:20,000) and HRP-conjugated goat anti-rabbit secondary antibody (Cat#201, 1:20,000) respectively. Image was developed using FeQ™ ECL Substrate Kit (Cat#226).



Western blotting analysis using anti-MAP1LC3A antibody (Cat#61125). MAP1LC3A expression in wild type (WT) and MAP1LC3A shRNA knockdown (KD) HeLa cells with 30 µg of total cell lysates. β-Tubulin serves as a loading control. The blot was incubated with anti-MAP1LC3A antibody (Cat#61125, 1:20,000) and HRP-conjugated goat anti-rabbit secondary antibody (Cat#201, 1:20,000) respectively. Image was developed using FeQ™ ECL Substrate Kit (Cat#226).