

KD-Validated Anti-Histone H1.0 Recombinant Rabbit Monoclonal Antibody



Catalog #: 61126

Aliases

H1-0; H1.0 Linker Histone; H1.0; H1F0; H1FV; H1 Histone Family Member 0; H1.0, H1(0), H1-0; Histone H1(0); Histone H1.0; Histone H1'; H1 Histone Family, Member 0; H10

Background

Gene Name: H1-0

NCBI Gene Entry: [3005](#)

UniProt Entry: [P07305](#)

Application Information

Molecular Weight: Predicted, 21 kDa, observed, 28 kDa

Clonality: Rabbit monoclonal antibody

Clone ID: 23GB1965

Species Reactivity: Human, mouse, rat

Applications Tested: Western blotting (WB), immunocytochemistry (IC)

Immunogen

A synthesized peptide derived from human Histone H1.0

Isotype

Rabbit IgG

Storage Buffer

Supplied in PBS (pH 7.4) containing 50% glycerol, and 0.02% sodium azide.

Storage

Store at -20 °C for one year.

Recommended Dilutions

Western Blotting (WB): 1:1,000-1:5,000

Immunocytochemistry (IC): 1:100-1:1,000

Note: This product is for research use only.

Validation Data

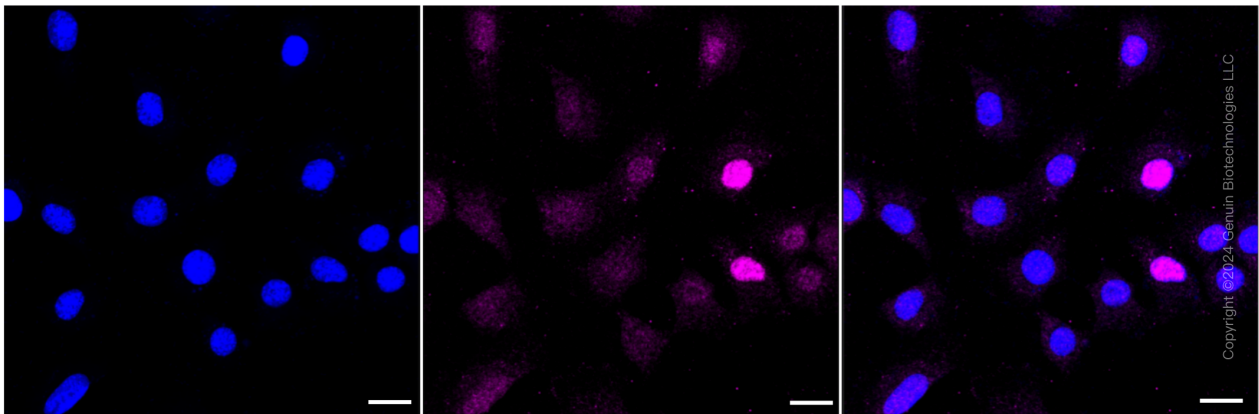
SUPPORT

SUPPORT@GENUINBIOTECH.COM
TEL: +1-540-855-7041

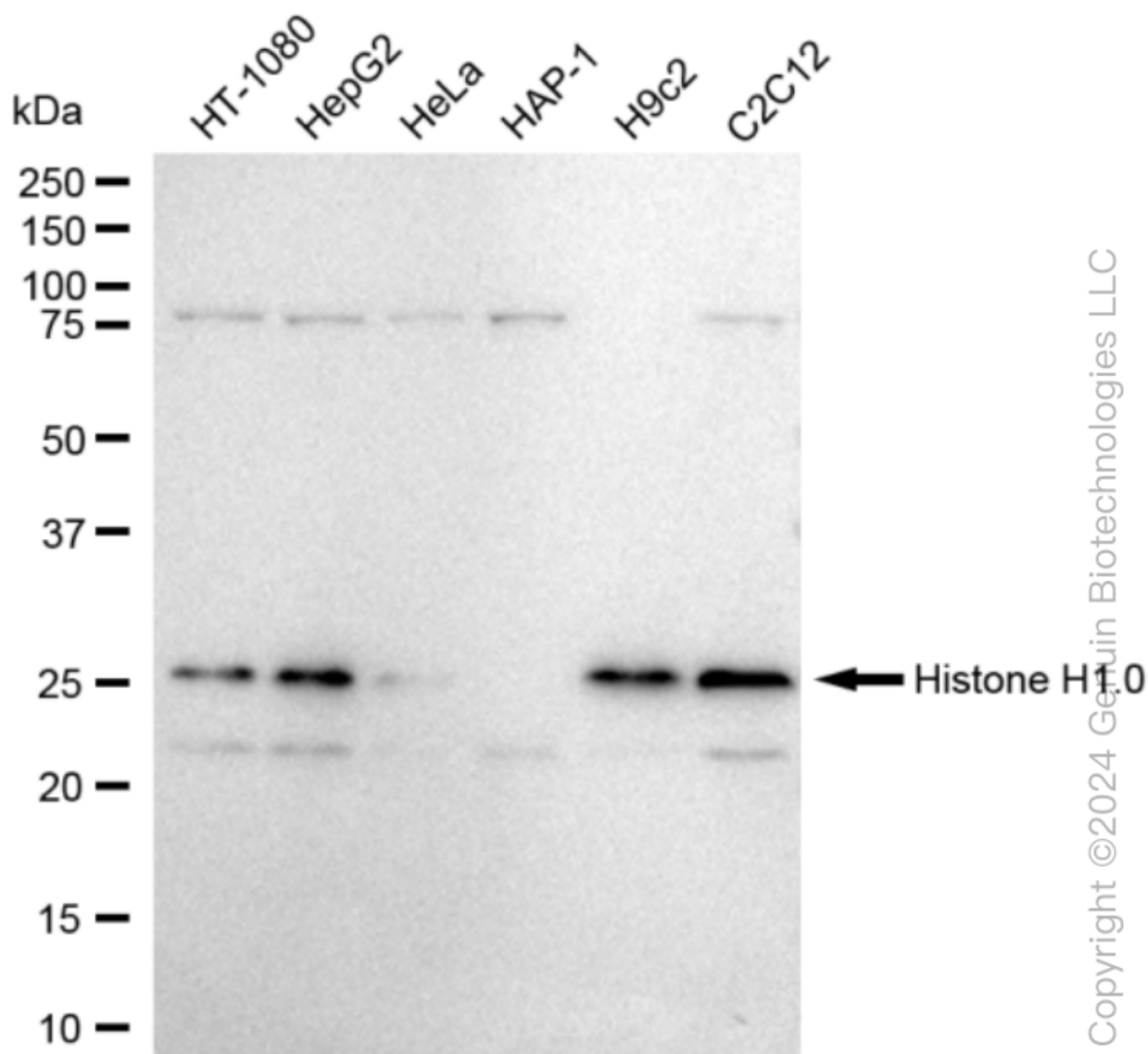
ORDERS

SALES@GENUINBIOTECH.COM
FAX: +1-540-855-7041

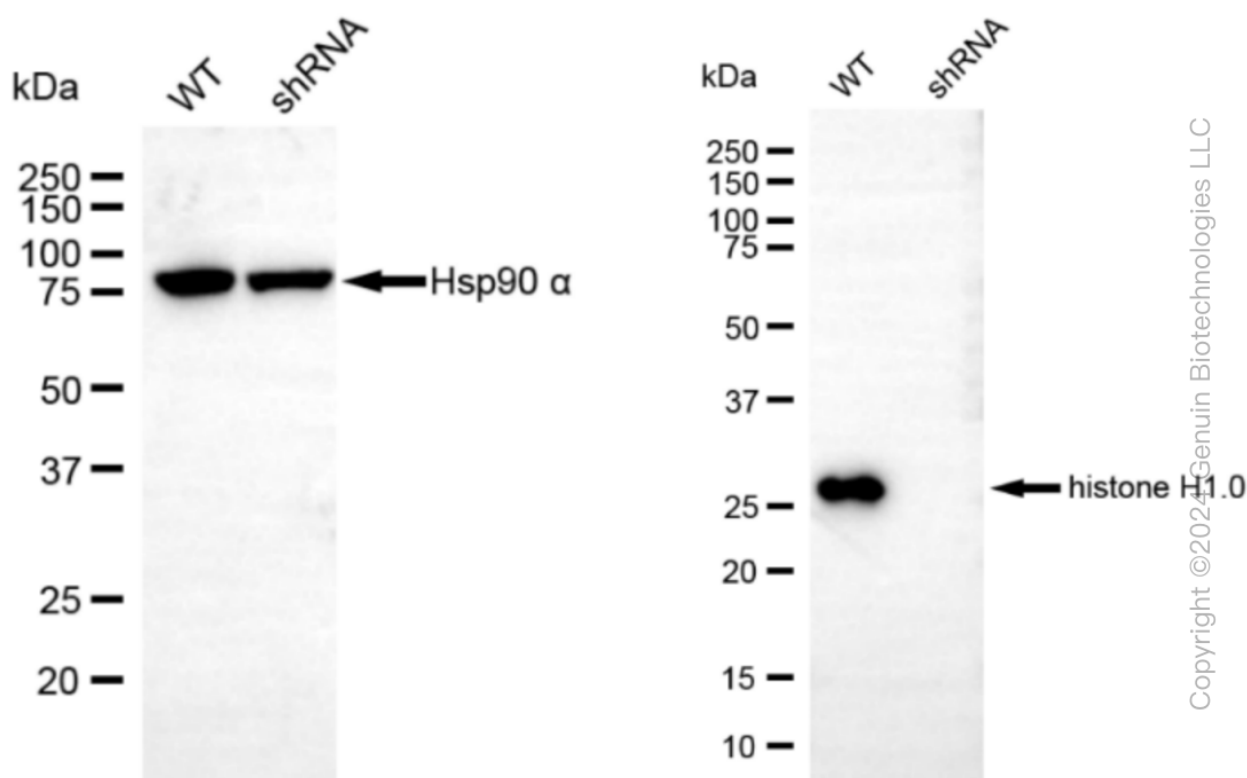
WWW.GENUINBIOTECH.COM



Immunocytochemical staining of C2C12 cells with Histone H1.0 antibody (Cat#61126, 1:1,000). Nuclei were stained blue with DAPI; Histone H1.0 was stained magenta with Alexa Fluor® 647. Images were taken using Leica stellaris 5. Protein abundance based on laser Intensity and smart gain: Medium. Scale bar: 20 μ m.



Western blotting analysis using anti-Histone H1.0 antibody (Cat#61126). Total cell lysates (30 μ g) from various cell lines were loaded and separated by SDS-PAGE. The blot was incubated with anti-Histone H1.0 antibody (Cat#61126, 1:5,000) and HRP-conjugated goat anti-rabbit secondary antibody (Cat#201, 1:20,000) respectively. Image was developed using FeQ™ ECL Substrate Kit (Cat#226).



Western blotting analysis using anti-histone H1.0 antibody (Cat#61126). Histone H1.0 expression in wild-type (WT) and H1-0 shRNA knockdown (KD) HeLa cells with 20 µg of total cell lysates. β-Tubulin serves as a loading control. The blot was incubated with anti-histone H1.0 antibody (Cat#61126, 1:5,000) and HRP-conjugated goat anti-rabbit secondary antibody (Cat#201, 1:20,000) respectively. Image was developed using NaQ™ ECL Substrate Kit (Cat#716). H1-0, H1.0 Linker Histone.