

KD-Validated Anti-14-3-3 gamma Recombinant Rabbit Monoclonal Antibody



Catalog #: 61127

Aliases

YWHAG; Tyrosine 3-Monooxygenase/Tryptophan 5-Monooxygenase Activation Protein Gamma; 14-3-3GAMMA; PPP1R170; Tyrosine 3-Monooxygenase/Tryptophan 5-Monooxygenase Activation Protein, Gamma Polypeptide; Protein Phosphatase 1, Regulatory Subunit 170; Protein Kinase C Inhibitor Protein 1; 14-3-3 Protein Gamma; KCIP-1; 14-3-3 Gamma; 14-3-3γ; 14-3-3G; EIEE56; DEE56

Background

Gene Name: YWHAG

NCBI Gene Entry: [7532](#)

UniProt Entry: [P61981](#)

Application Information

Molecular Weight: Predicted, 28 kDa, observed, 28 kDa

Clonality: Rabbit monoclonal antibody

Clone ID: 23GB1970

Species Reactivity: Human, mouse, rat

Applications Tested: Western blotting (WB), flow cytometry (FCM), immunocytochemistry (IC)

Immunogen

A synthesized peptide derived from human 14-3-3 gamma

Isotype

Rabbit IgG

Storage Buffer

Supplied in PBS (pH 7.4) containing 50% glycerol, and 0.02% sodium azide.

Storage

Store at -20 °C for one year.

Recommended Dilutions

Western Blotting (WB): 1:1,000-1:5,000

Flow Cytometry (FCM): 1:2,000

Immunocytochemistry (IC): 1:100-1:1,000

SUPPORT

SUPPORT@GENUINBIOTECH.COM
TEL: +1-540-855-7041

ORDERS

SALES@GENUINBIOTECH.COM
FAX: +1-540-855-7041

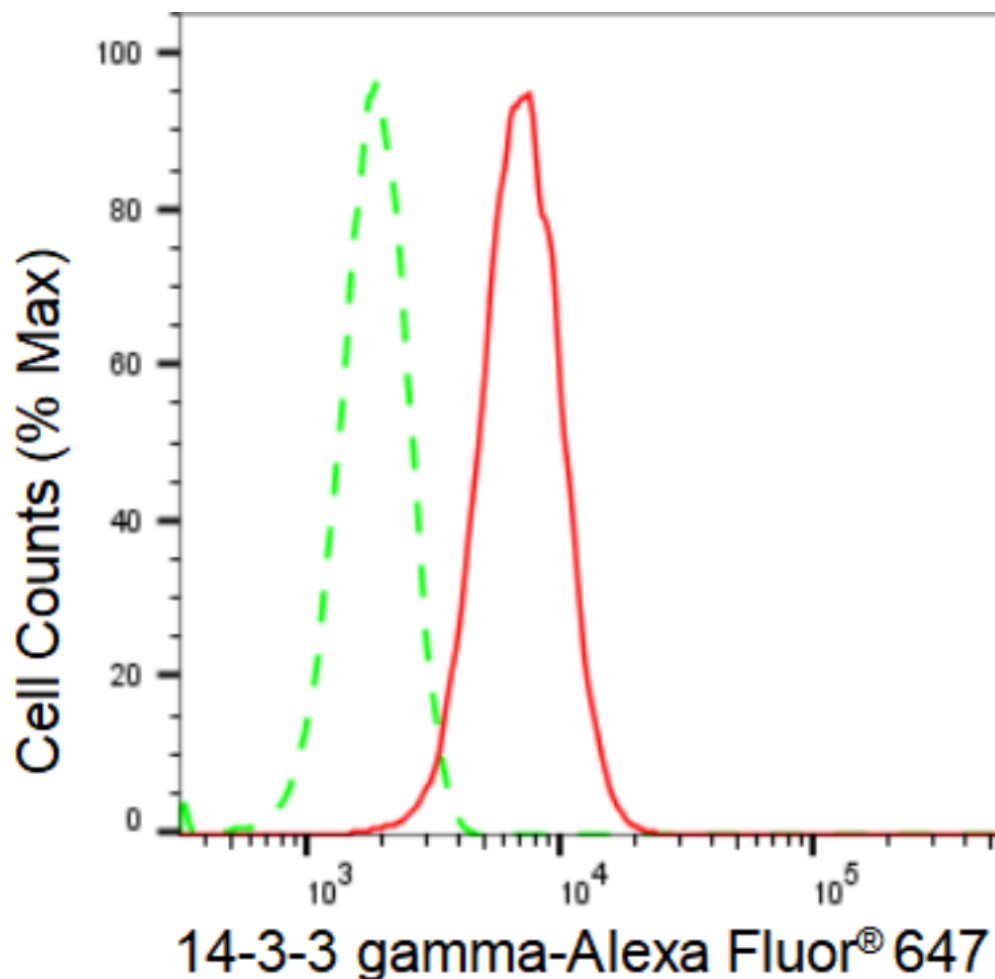
WWW.GENUINBIOTECH.COM

KD-Validated Anti-14-3-3 gamma Recombinant Rabbit Monoclonal Antibody

PAGE 2

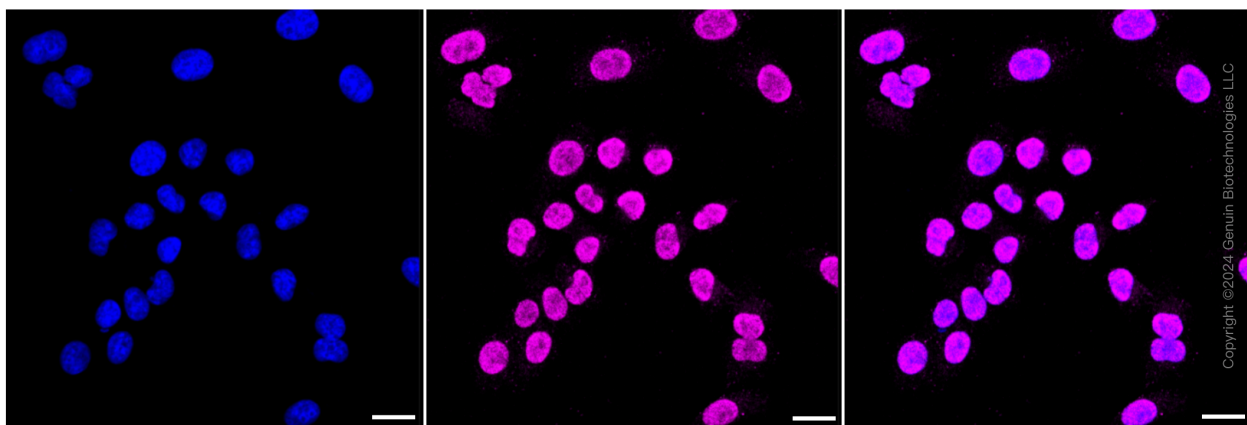
Note: This product is for research use only.

Validation Data



Copyright ©2024 Genuin Biotechnologies LLC

Flow cytometric analysis of 14-3-3 gamma expression in HepG2 cells using 14-3-3 gamma antibody (Cat#61127, 1:2,000). Green, isotype control; red, 14-3-3 gamma.



Copyright ©2024 Genuin Biotechnologies LLC

SUPPORT

SUPPORT@GENUINBIOTECH.COM
TEL: +1-540-855-7041

ORDERS

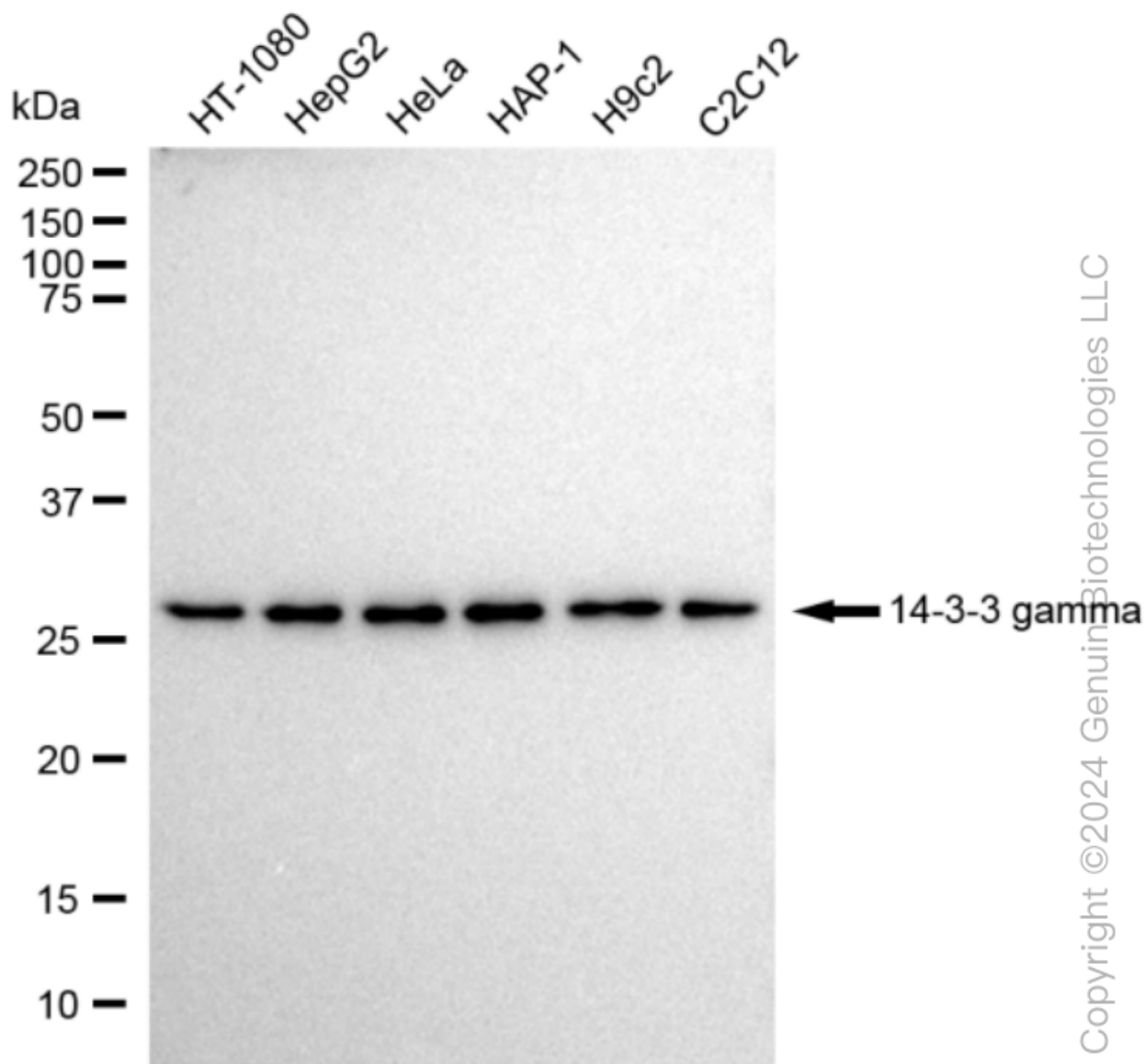
SALES@GENUINBIOTECH.COM
FAX: +1-540-855-7041

WWW.GENUINBIOTECH.COM

KD-Validated Anti-14-3-3 gamma Recombinant Rabbit Monoclonal Antibody

PAGE 3

Nuclei were stained blue with DAPI; 14-3-3 gamma was stained magenta with Alexa Fluor® 647. Images were taken using Leica stellaris 5. Protein abundance based on laser Intensity and smart gain: Medium. Scale bar: 20 µm.



Western blotting analysis using anti-14-3-3 gamma antibody (Cat#61127). Total cell lysates (30 µg) from various cell lines were loaded and separated by SDS-PAGE. The blot was incubated with anti-14-3-3 gamma antibody (Cat#61127, 1:5,000) and HRP-conjugated goat anti-rabbit secondary antibody (Cat#201, 1:20,000) respectively. Image was developed using FeQ™ ECL Substrate Kit (Cat#226).

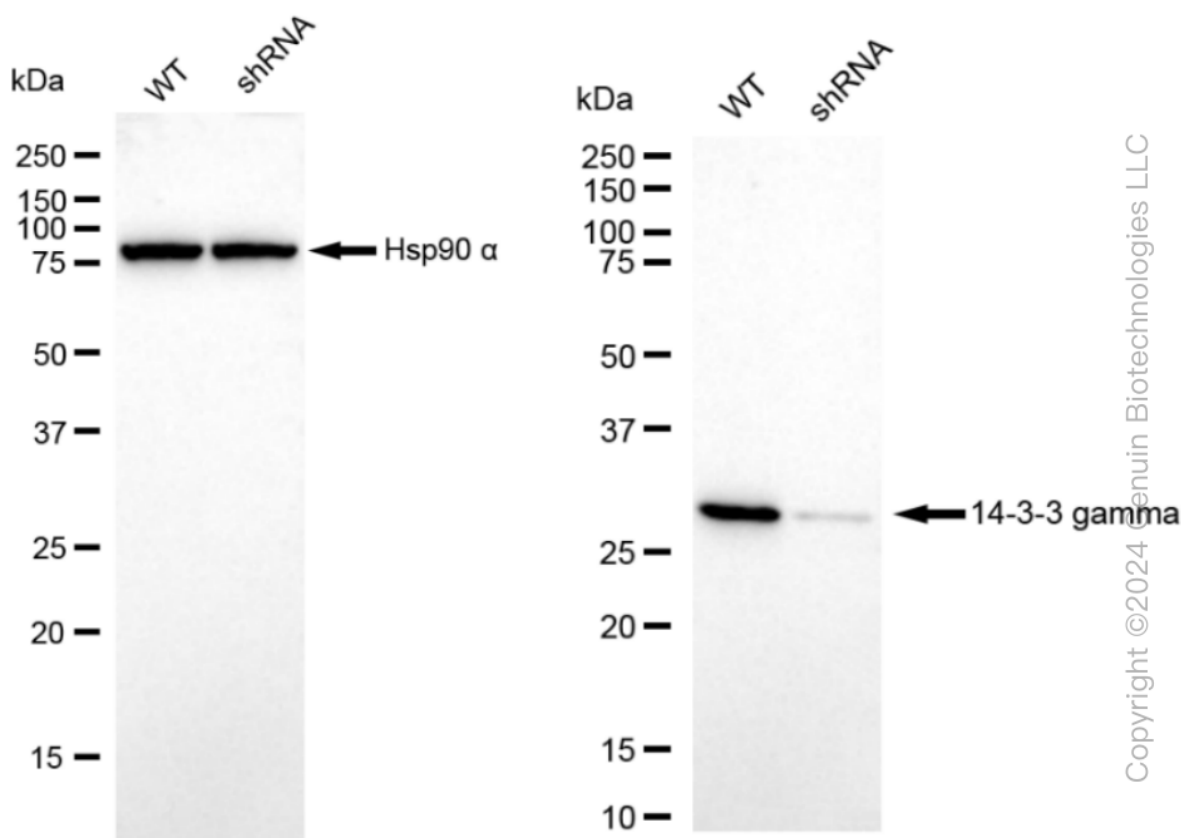
SUPPORT

SUPPORT@GENUINBIOTECH.COM
TEL: +1-540-855-7041

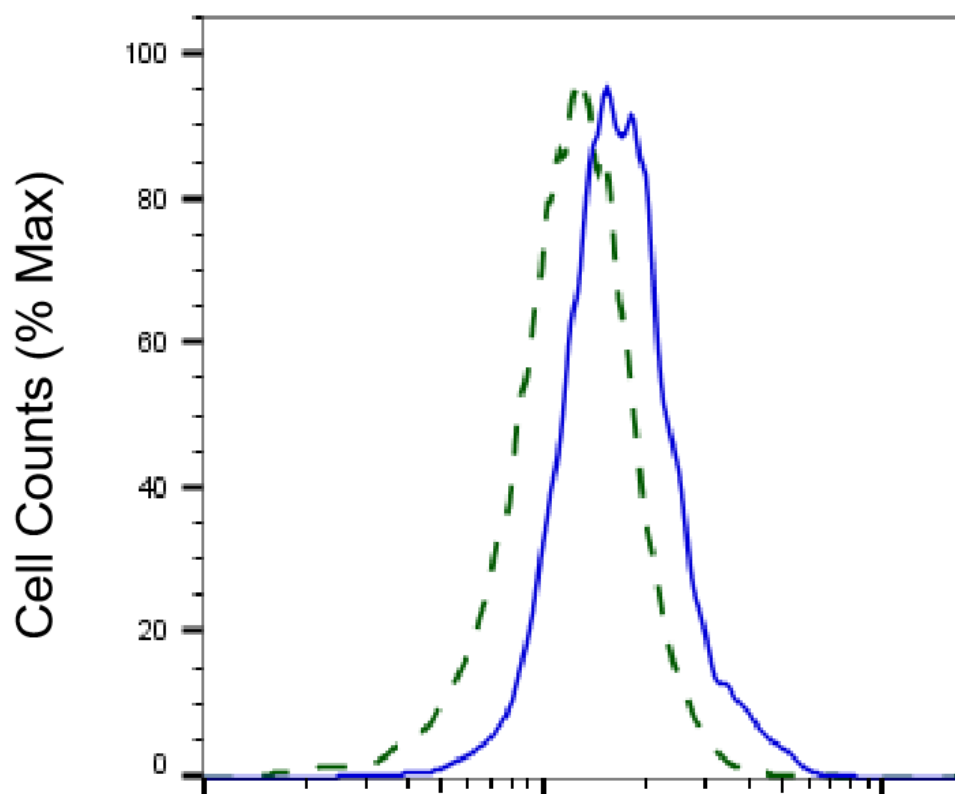
ORDERS

SALES@GENUINBIOTECH.COM
FAX: +1-540-855-7041

WWW.GENUINBIOTECH.COM



Western blotting analysis using anti-14-3-3 gamma antibody (Cat#61127). 14-3-3 gamma expression in wild type (WT) and 14-3-3 gamma shRNA knockdown (KD) HeLa cells with 30 μ g of total cell lysates. β -Tubulin serves as a loading control. The blot was incubated with anti-14-3-3 gamma antibody (Cat#61127, 1:5,000) and HRP-conjugated goat anti-rabbit secondary antibody (Cat#201, 1:20,000) respectively. Image was developed using FeQTM ECL Substrate Kit (Cat#226).



14-3-3 gamma-Alexa Fluor® 647

Validation of 14-3-3 gamma knockdown using flow cytometry. Wild-type(WT, Blue) and knockdown(KD, Green) HeLa cells were stained with anti-14-3-3 gamma antibody (Cat#61127, 1:2,000) and analyzed using BD flow cytometer.

Copyright ©2025 Genuin Biotechnologies LLC