

KD-Validated Anti-Hsp22 Recombinant Rabbit Monoclonal Antibody



Catalog #: 61129

Aliases

HSPB8; Heat Shock Protein Family B (Small) Member 8; E2IG1; HSP22; CMT2L; H11; Small Stress Protein-Like Protein HSP22; Heat Shock 27kDa Protein 8; Heat Shock 22kDa Protein 8; Heat Shock Protein Beta-8; E2-Induced Gene 1 Protein; Alpha-Crystallin C Chain; Protein Kinase H11; HSPB8-N1; HSPB8-N2; DHMN2; HMN2A; CRYAC; HspB8; HMN2

Background

Gene Name: HSPB8

NCBI Gene Entry: [26353](#)

UniProt Entry: [Q9UJY1](#)

Application Information

Molecular Weight: Predicted, 22 kDa, observed, 22 kDa

Clonality: Rabbit monoclonal antibody

Clone ID: 23GB1980

Species Reactivity: Human, mouse

Applications Tested: Western blotting (WB), flow cytometry (FCM), immunocytochemistry (IC)

Immunogen

A synthesized peptide derived from human HSPB8/HSP22

Isotype

Rabbit IgG

Storage Buffer

Supplied in PBS (pH 7.4) containing 50% glycerol, and 0.02% sodium azide.

Storage

Store at -20 °C for one year.

Recommended Dilutions

Western Blotting (WB): 1:500-1:2,500

Flow Cytometry (FCM): 1:2,000

Immunocytochemistry (IC): 1:100-1:1,000

SUPPORT

SUPPORT@GENUINBIOTECH.COM
TEL: +1-540-855-7041

ORDERS

SALES@GENUINBIOTECH.COM
FAX: +1-540-855-7041

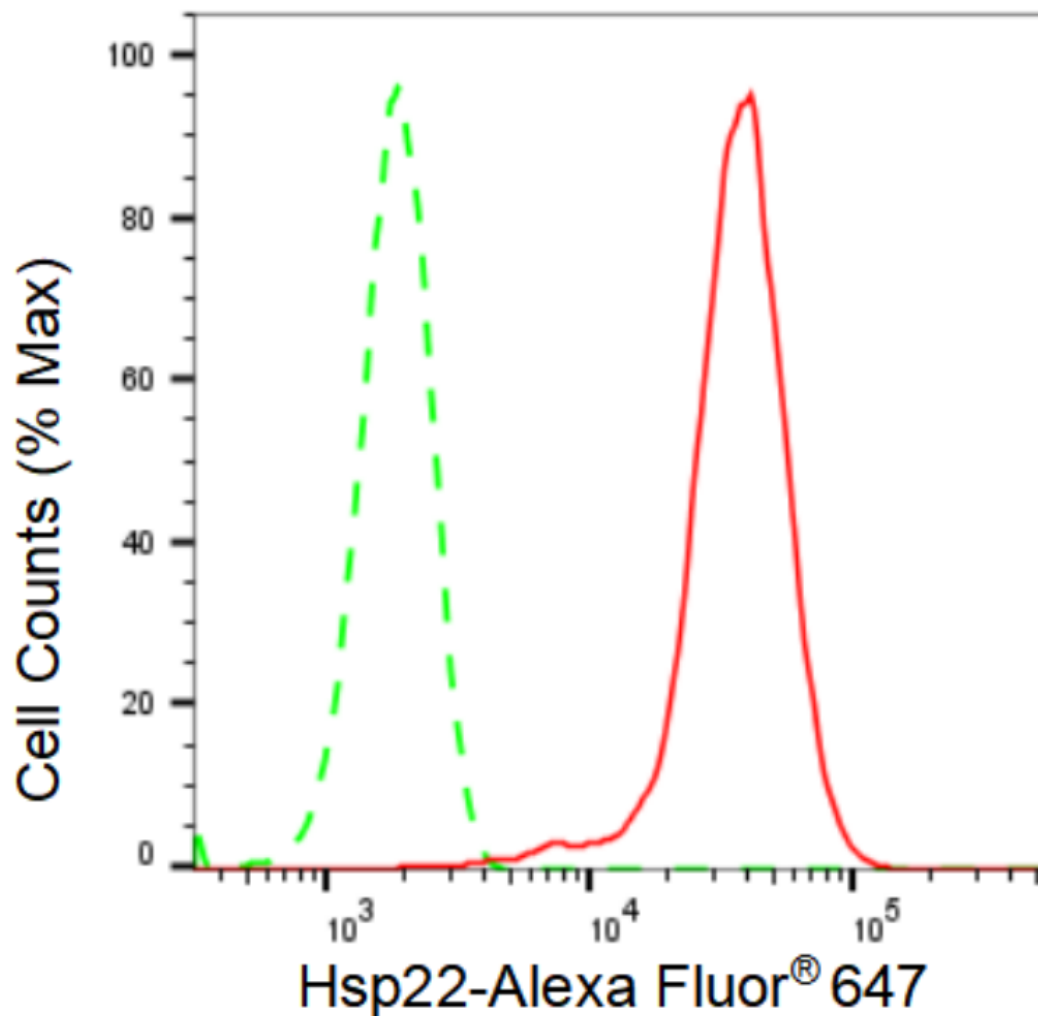
WWW.GENUINBIOTECH.COM

KD-Validated Anti-Hsp22 Recombinant Rabbit Monoclonal Antibody

PAGE 2

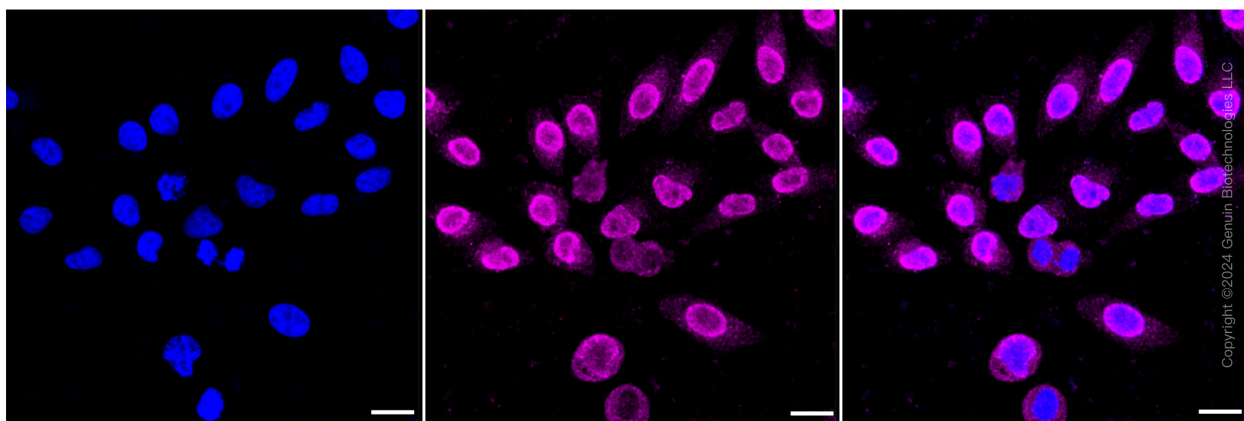
Note: This product is for research use only.

Validation Data



Copyright ©2024 Genuin Biotechnologies LLC

Flow cytometric analysis of Hsp22 expression in HepG2 cells using Hsp22 antibody (Cat#61129, 1:2,000). Green, isotype control; red, Hsp22.



Copyright ©2024 Genuin Biotechnologies LLC

SUPPORT

SUPPORT@GENUINBIOTECH.COM
TEL: +1-540-855-7041

ORDERS

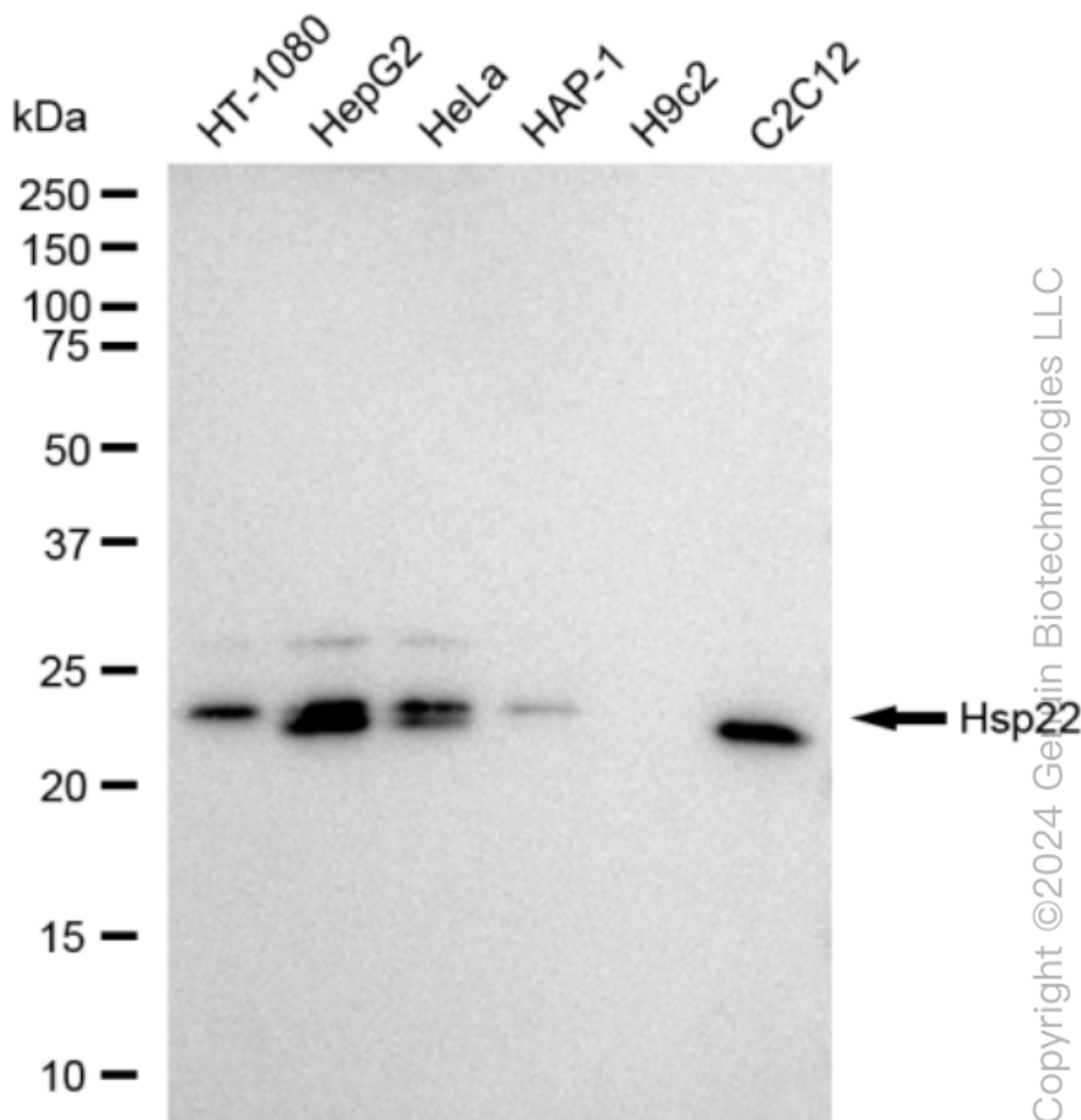
SALES@GENUINBIOTECH.COM
FAX: +1-540-855-7041

WWW.GENUINBIOTECH.COM

KD-Validated Anti-Hsp22 Recombinant Rabbit Monoclonal Antibody

PAGE 3

Immunocytochemical staining of HepG2 cells with Hsp22 antibody (Cat#61129, 1:1,000). Nuclei were stained blue with DAPI; Hsp22 was stained magenta with Alexa Fluor® 647. Images were taken using Leica stellaris 5. Protein abundance based on laser Intensity and smart gain: Medium. Scale bar: 20 μ m.



Western blotting analysis using anti-Hsp22 antibody (Cat#61129). Total cell lysates (50 μ g) from various cell lines were loaded and separated by SDS-PAGE. The blot was incubated with anti-Hsp22 antibody (Cat#61129, 1:2,500) and HRP-conjugated goat anti-rabbit secondary antibody (Cat#201, 1:20,000) respectively. Image was developed using FeQ™ ECL Substrate Kit (Cat#226).

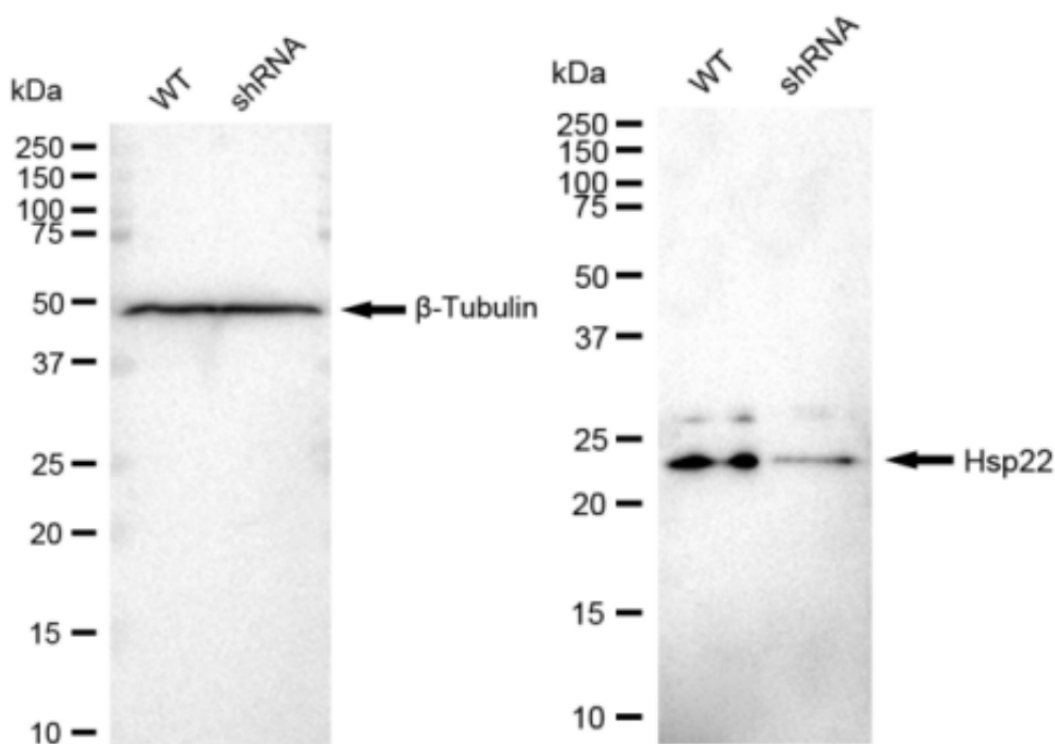
SUPPORT

SUPPORT@GENUINBIOTECH.COM
TEL: +1-540-855-7041

ORDERS

SALES@GENUINBIOTECH.COM
FAX: +1-540-855-7041

WWW.GENUINBIOTECH.COM



Western blotting analysis using anti-Hsp22 antibody (Cat#61129). Hsp22 expression in wild type (WT) and Hsp22 shRNA knockdown (KD) 293T cells with 30 μ g of total cell lysates. β -Tubulin serves as a loading control. The blot was incubated with anti-Hsp22 antibody (Cat#61129, 1:5,000) and HRP-conjugated goat anti-rabbit secondary antibody (Cat#201, 1:20,000) respectively. Image was developed using FeQ™ ECL Substrate Kit (Cat#226).