

KD-Validated Anti-CRTC3 Recombinant Rabbit Monoclonal Antibody



Catalog #: 61131

Aliases

CRTC3; CREB Regulated Transcription Coactivator 3; CREB-Regulated Transcription Coactivator 3; FLJ21868; TORC-3; TORC3; Transducer Of Regulated CAMP Response Element-Binding Protein (CREB) 3; Transducer Of Regulated CAMP Response Element-Binding Protein 3; Transducer Of Regulated CREB Protein 3; Transducer Of CREB Protein 3

Background

Gene Name: CRTC3

NCBI Gene Entry: [64784](#)

UniProt Entry: [Q6UUV7](#)

Application Information

Molecular Weight: Predicted, 67 kDa, observed, 67 kDa

Clonality: Rabbit monoclonal antibody

Clone ID: 24GB5935

Species Reactivity: Human, mouse, rat

Applications Tested: Western blotting (WB), flow cytometry (FCM), immunocytochemistry (IC)

Immunogen

A synthesized peptide derived from CRTC3

Isotype

Rabbit IgG

Storage Buffer

Supplied in PBS (pH 7.4) containing 50% glycerol, and 0.02% sodium azide.

Storage

Store at -20 °C for one year.

Recommended Dilutions

Western Blotting (WB): 1:1,000-1:5,000

Flow Cytometry (FCM): 1:2,000

Immunocytochemistry (IC): 1:100-1:1,000

SUPPORT

SUPPORT@GENUINBIOTECH.COM
TEL: +1-540-855-7041

ORDERS

SALES@GENUINBIOTECH.COM
FAX: +1-540-855-7041

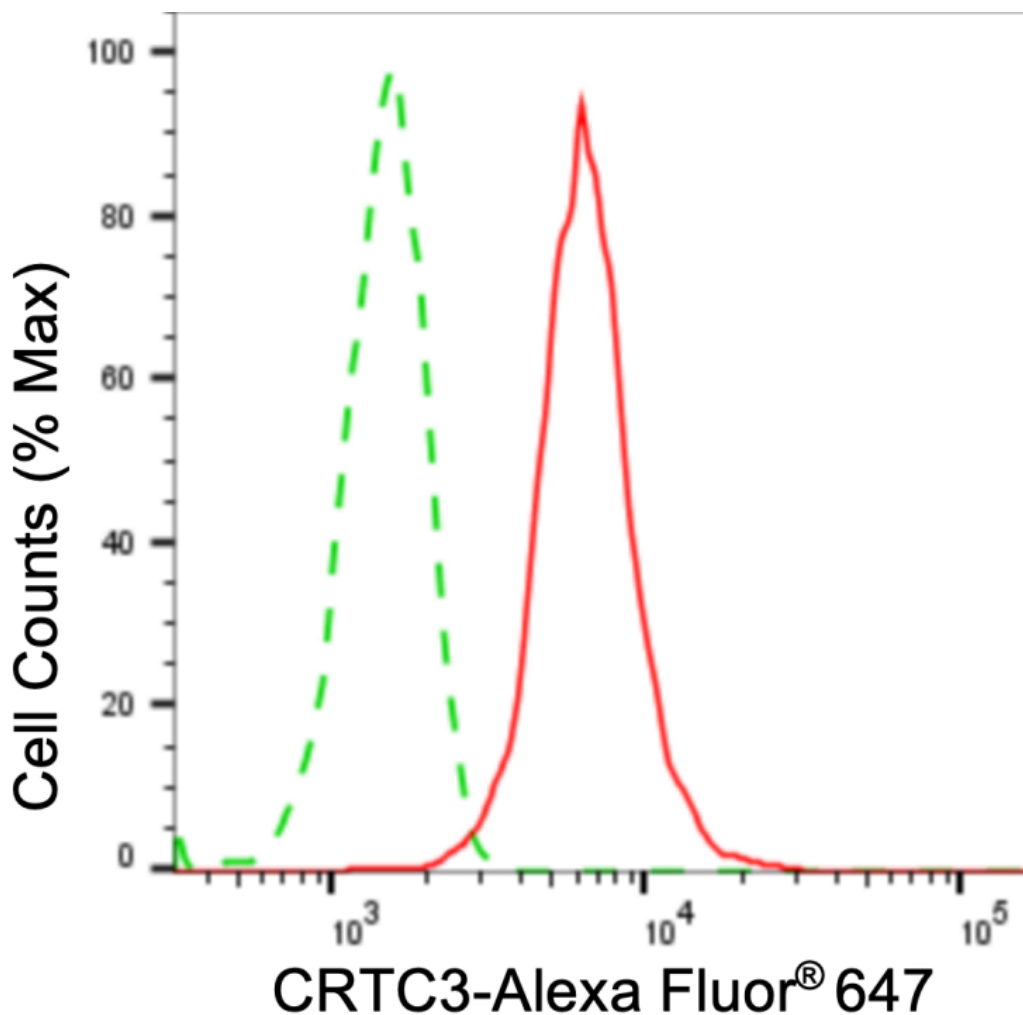
WWW.GENUINBIOTECH.COM

KD-Validated Anti-CRTC3 Recombinant Rabbit Monoclonal Antibody

PAGE 2

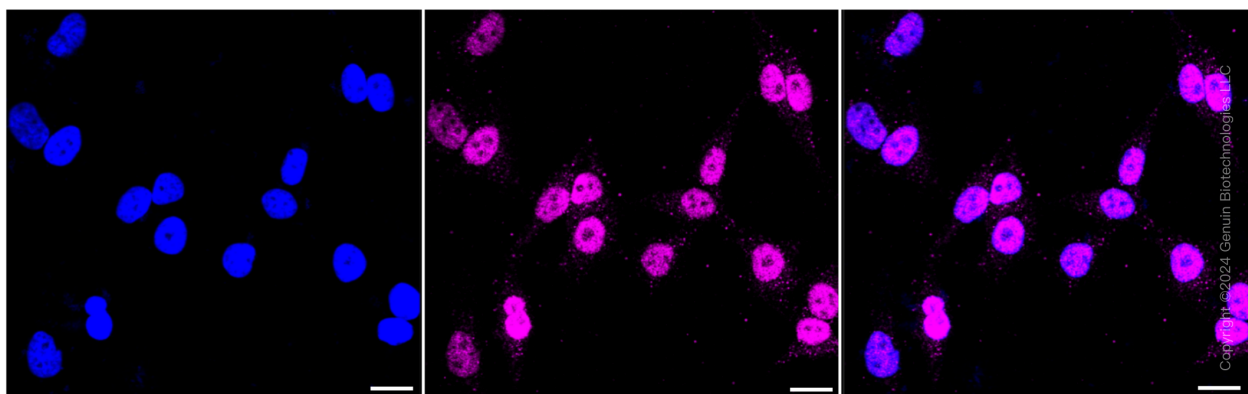
Note: This product is for research use only.

Validation Data



Copyright ©2024 Genuin Biotechnologies LLC

Flow cytometric analysis of CRTC3 expression in HeLa cells using CRTC3 antibody (Cat#61131, 1:2,000). Green, isotype control; red, CRTC3.



SUPPORT

SUPPORT@GENUINBIOTECH.COM
TEL: +1-540-855-7041

ORDERS

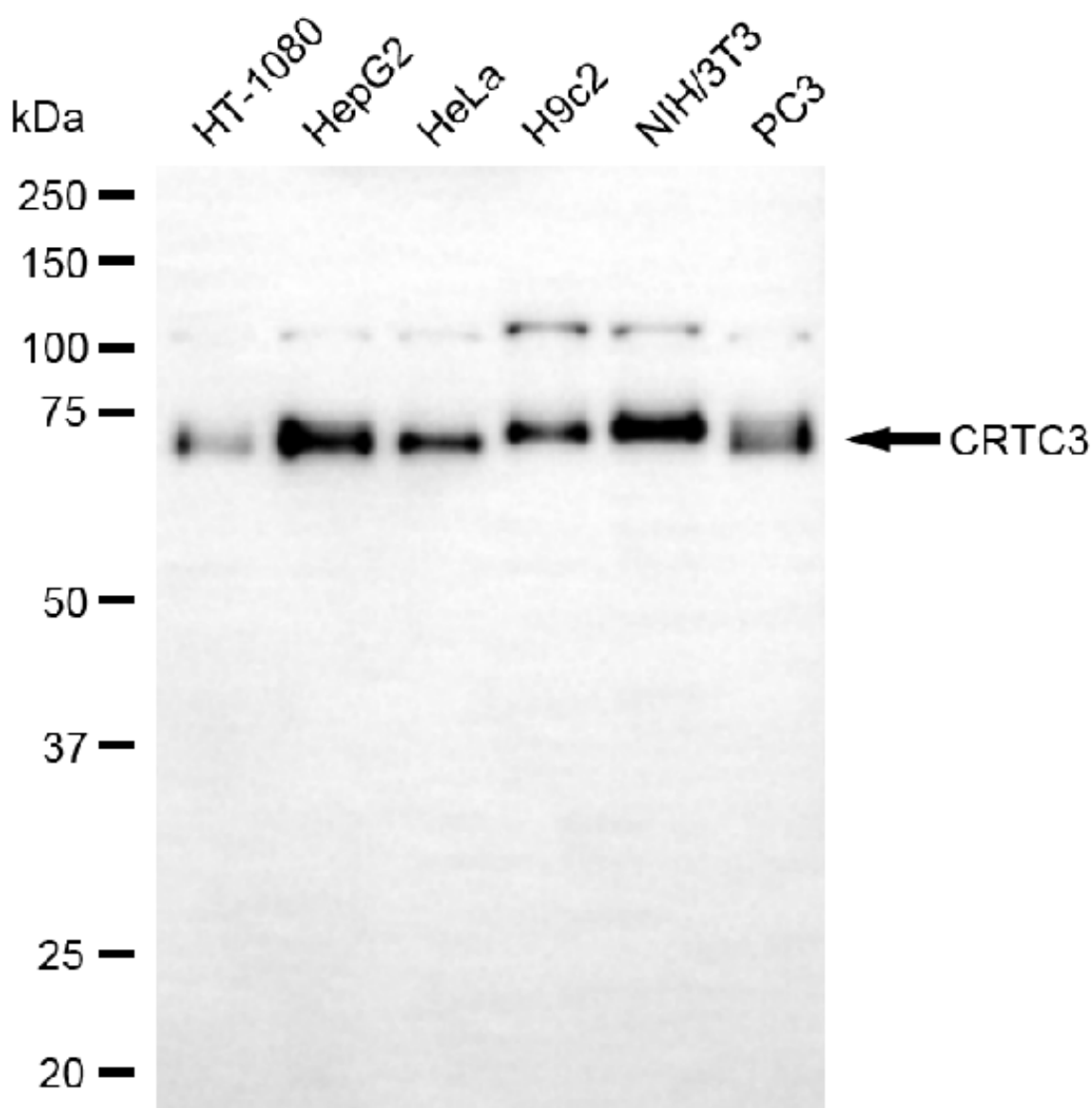
SALES@GENUINBIOTECH.COM
FAX: +1-540-855-7041

WWW.GENUINBIOTECH.COM

KD-Validated Anti-CRTC3 Recombinant Rabbit Monoclonal Antibody

PAGE 3

Immunocytochemical staining of HeLa cells with CRTC3 antibody (Cat#61131, 1:1,000). Nuclei were stained blue with DAPI; CRTC3 was stained magenta with Alexa Fluor® 647. Images were taken using Leica stellaris 5. Protein abundance based on laser Intensity and smart gain: Medium. Scale bar: 20 μ m.



Copyright ©2025 Genuin Biotechnologies LLC

Western blotting analysis using anti-CRTC3 antibody (Cat#61131). Total cell lysates (30 μ g) from various cell lines were loaded and separated by SDS-PAGE. The blot was incubated with anti-CRTC3 antibody (Cat#61131, 1:5,000) and HRP-conjugated goat anti-rabbit secondary antibody (Cat#201, 1:20,000) respectively. Image was developed using FeQ™ ECL Substrate Kit (Cat#226).

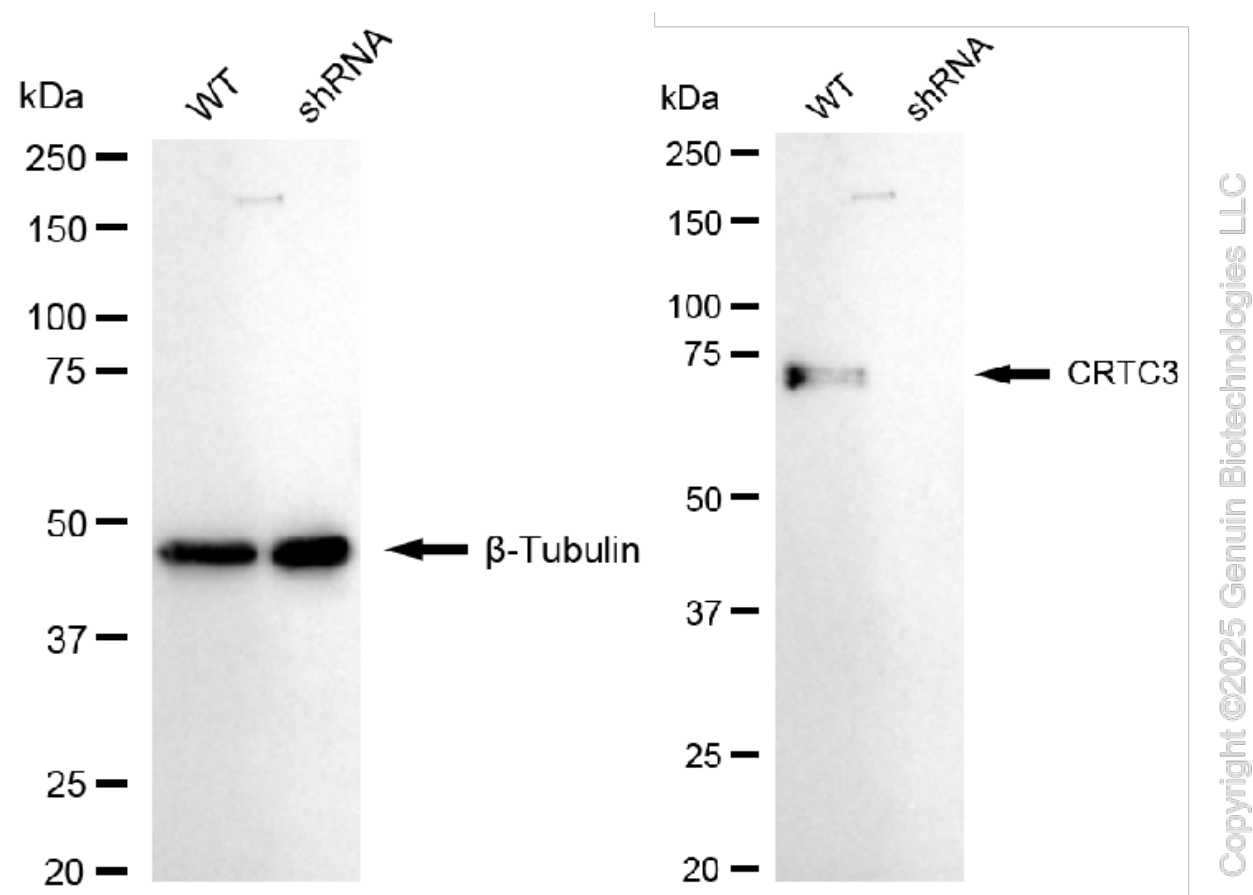
SUPPORT

SUPPORT@GENUINBIOTECH.COM
TEL: +1-540-855-7041

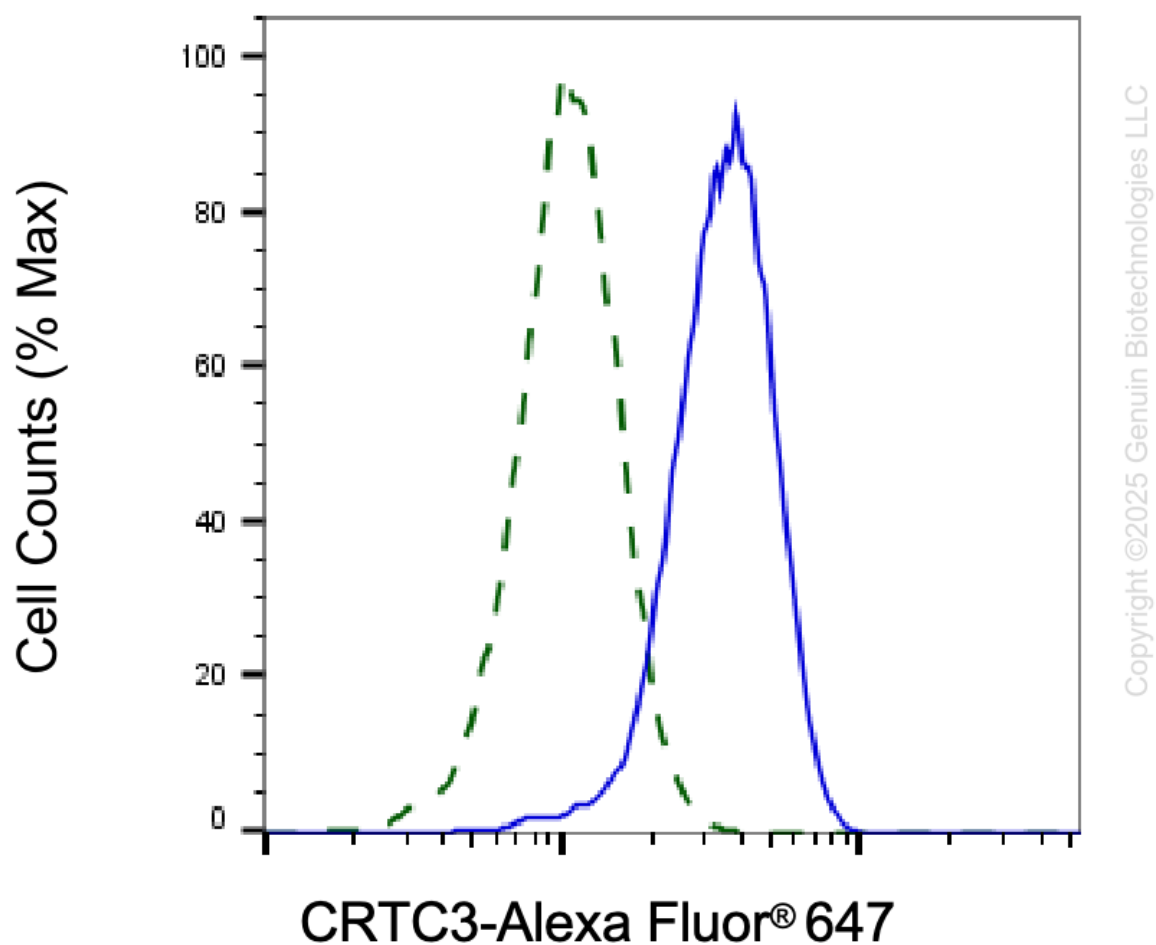
ORDERS

SALES@GENUINBIOTECH.COM
FAX: +1-540-855-7041

WWW.GENUINBIOTECH.COM



Western blotting analysis using anti-CRTC3 antibody (Cat#61131). CRTC3 expression in wild type (WT) and CRTC3 shRNA knockdown (KD) HT-1080 cells with 20 μ g of total cell lysates. β -Tubulin serves as a loading control. The blot was incubated with anti-CRTC3 antibody (Cat#61131, 1:5,000) and HRP-conjugated goat anti-rabbit secondary antibody (Cat#201, 1:20,000) respectively. Image was developed using NaQ™ ECL Substrate Kit (Cat#716).



Validation of CRTC3 knockdown using flow cytometry. Wild-type(WT, Blue) and knockdown(KD, Green) HT1080 cells were stained with anti-CRTC3 antibody (Cat#61131, 1:2,000) and analyzed using BD flow cytometer.