

# KD-Validated Anti-Diaphanous related formin 1 Recombinant Rabbit Monoclonal Antibody



**Catalog #: 61132**

## Aliases

DIAPH1; Diaphanous Related Formin 1; HDIA1; LFHL1; Mammalian Diaphanous Related Formin 1; Protein Diaphanous Homolog 1; MDia1; DFNA1; DRF1; Diaphanous (Drosophila, Homolog) 1; Diaphanous Homolog 1 (Drosophila); Diaphanous-Related Formin-1; SCBMS; MDIA1; DIAP1; DIA1

## Background

Gene Name: DIAPH1

NCBI Gene Entry: [1729](#)

UniProt Entry: [O60610](#)

## Application Information

Molecular Weight: Predicted, 141 kDa, observed, 155 kDa

Clonality: Rabbit monoclonal antibody

Clone ID: 23GB1990

Species Reactivity: Human, mouse, rat

Applications Tested: Western blotting (WB), flow cytometry (FCM), immunocytochemistry (IC)

## Immunogen

A synthesized peptide derived from human DIAPH1

## Isotype

Rabbit IgG

## Storage Buffer

Supplied in PBS (pH 7.4) containing 50% glycerol, and 0.02% sodium azide.

## Storage

Store at -20 °C for one year.

## Recommended Dilutions

Western Blotting (WB): 1:1,000-1:5,000

Flow Cytometry (FCM): 1:200-1:2,000

Immunocytochemistry (IC): 1:100-1:1,000

---

### SUPPORT

SUPPORT@GENUINBIOTECH.COM  
TEL: +1-540-855-7041

### ORDERS

SALES@GENUINBIOTECH.COM  
FAX: +1-540-855-7041

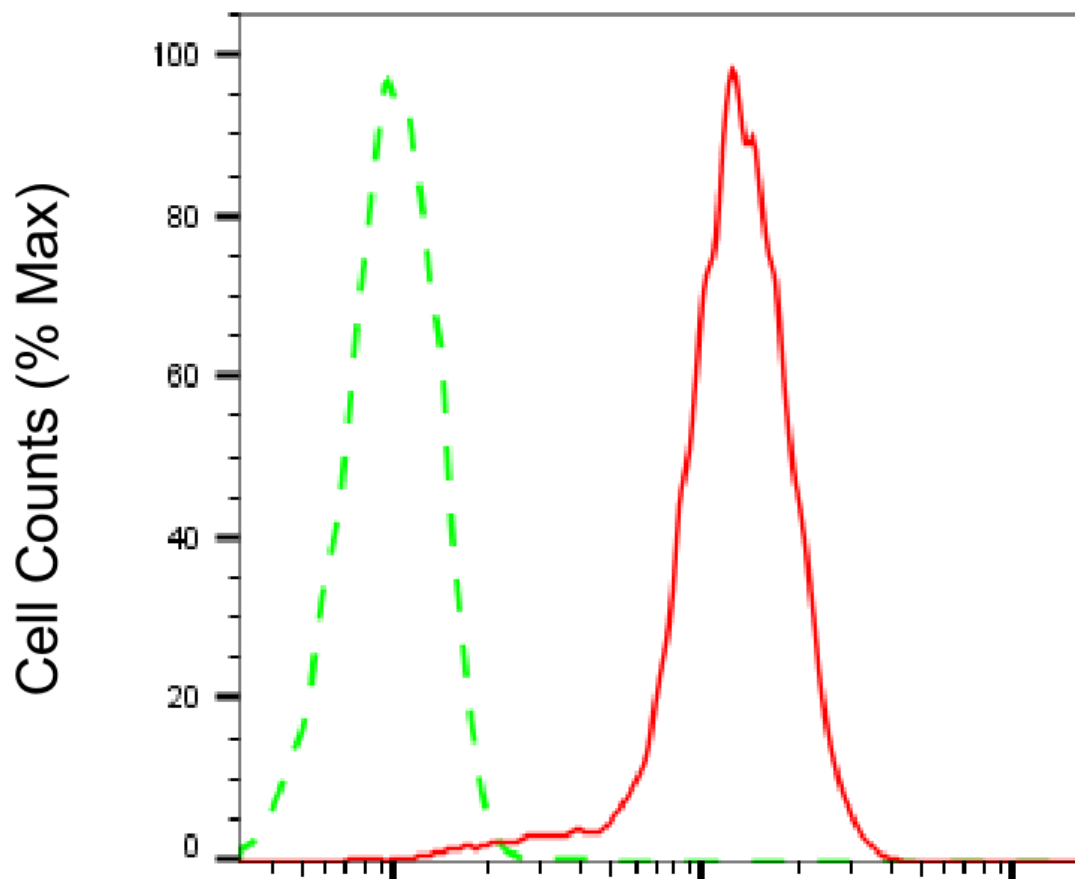
[WWW.GENUINBIOTECH.COM](http://WWW.GENUINBIOTECH.COM)

# KD-Validated Anti-Diaphanous related formin 1 Recombinant Rabbit Monoclonal Antibody

PAGE 2

**Note:** This product is for research use only.

## Validation Data



Copyright ©2025 Genuin Biotechnologies LLC

## Diaphanous related formin 1-Alexa Fluor® 647

Flow cytometric analysis of Diaphanous related formin 1 expression in HepG2 cells using Diaphanous related formin 1 antibody (Cat#61132, 1:2,000). Green, isotype control; red, Diaphanous related formin 1.

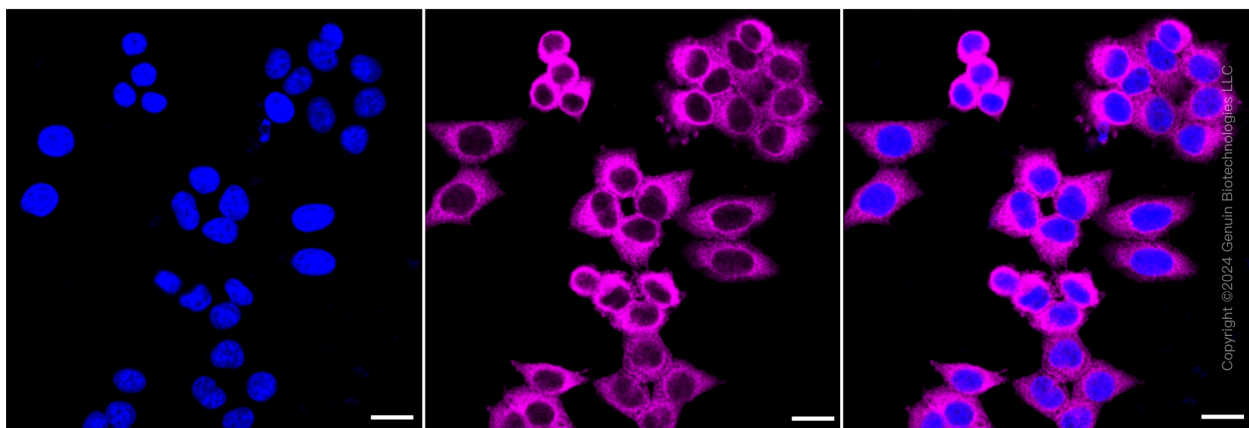
### SUPPORT

SUPPORT@GENUINBIOTECH.COM  
TEL: +1-540-855-7041

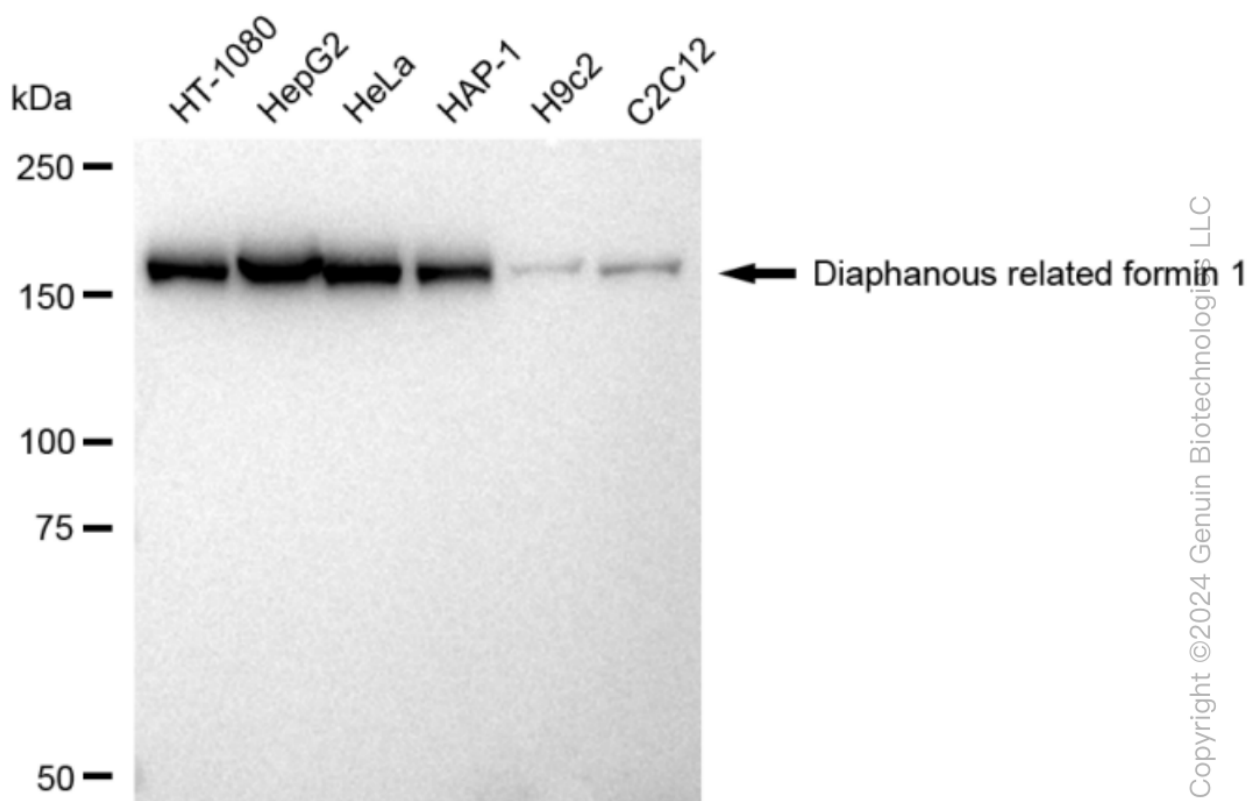
### ORDERS

SALES@GENUINBIOTECH.COM  
FAX: +1-540-855-7041

[WWW.GENUINBIOTECH.COM](http://WWW.GENUINBIOTECH.COM)



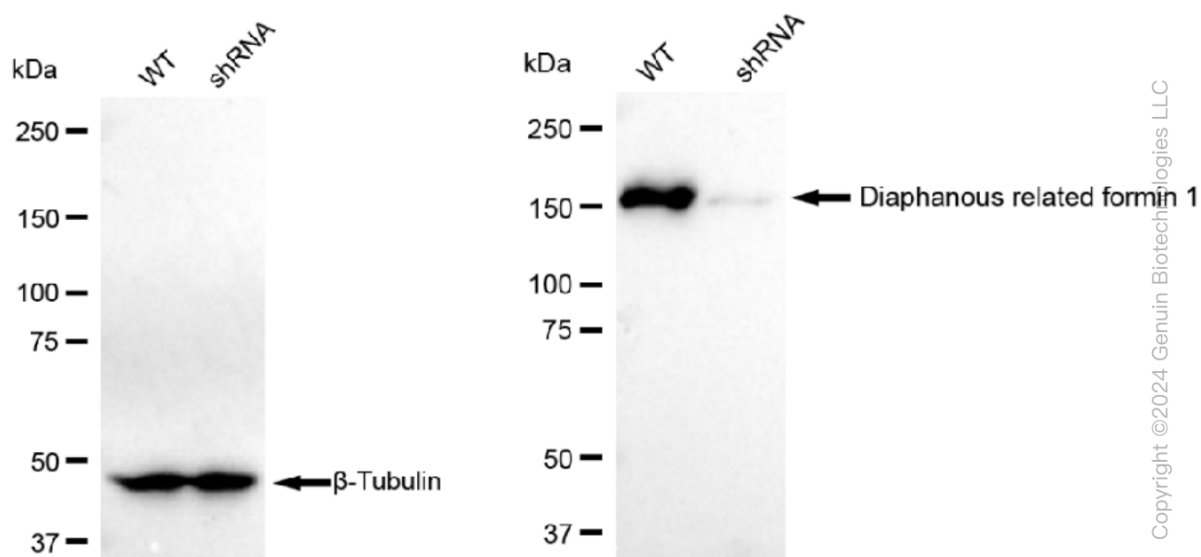
Immunocytochemical staining of HepG2 cells with Diaphanous related formin 1 antibody (Cat#61132, 1:1,000). Nuclei were stained blue with DAPI; Diaphanous related formin 1 was stained magenta with Alexa Fluor® 647. Images were taken using Leica stellaris 5. Protein abundance based on laser Intensity and smart gain: Medium. Scale bar: 20 µm.



Western blotting analysis using anti-Diaphanous related formin 1 antibody (Cat#61132). Total cell lysates (30 µg) from various cell lines were loaded and separated by SDS-PAGE. The blot was incubated with anti-Diaphanous related formin 1 antibody (Cat#61132, 1:5,000) and HRP-conjugated goat anti-rabbit secondary antibody (Cat#201, 1:20,000) respectively. Image was developed using FeQ™ ECL Substrate Kit (Cat#226).

## KD-Validated Anti-Diaphanous related formin 1 Recombinant Rabbit Monoclonal Antibody

PAGE 4



Western blotting analysis using anti-Diaphanous related formin 1 antibody (Cat#61132). Diaphanous related formin 1 expression in wild type (WT) and diaphanous related formin 1 shRNA knockdown (KD) HeLa cells with 30 µg of total cell lysates. Hsp90  $\alpha$  serves as a loading control. The blot was incubated with anti-Diaphanous related formin 1 antibody (Cat#61132, 1:5,000) and HRP-conjugated goat anti-rabbit secondary antibody (Cat#201, 1:20,000) respectively. Image was developed using FeQ™ ECL Substrate Kit (Cat#226).

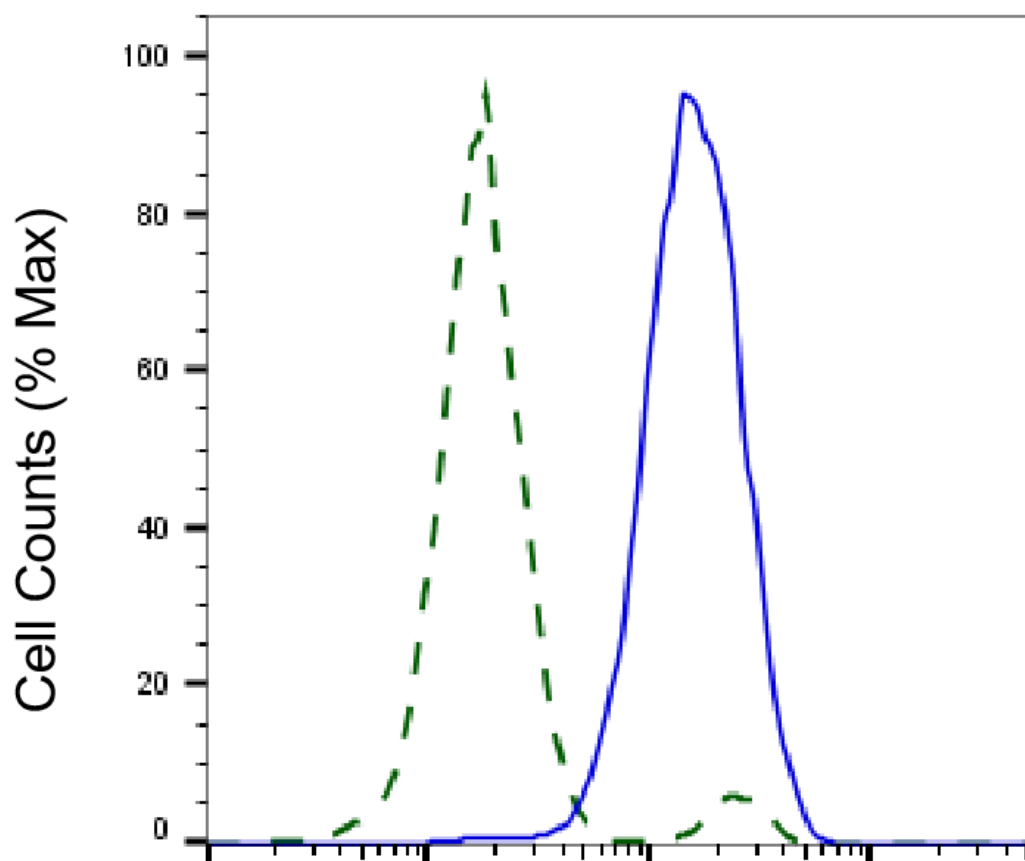
### SUPPORT

SUPPORT@GENUINBIOTECH.COM  
TEL: +1-540-855-7041

### ORDERS

SALES@GENUINBIOTECH.COM  
FAX: +1-540-855-7041

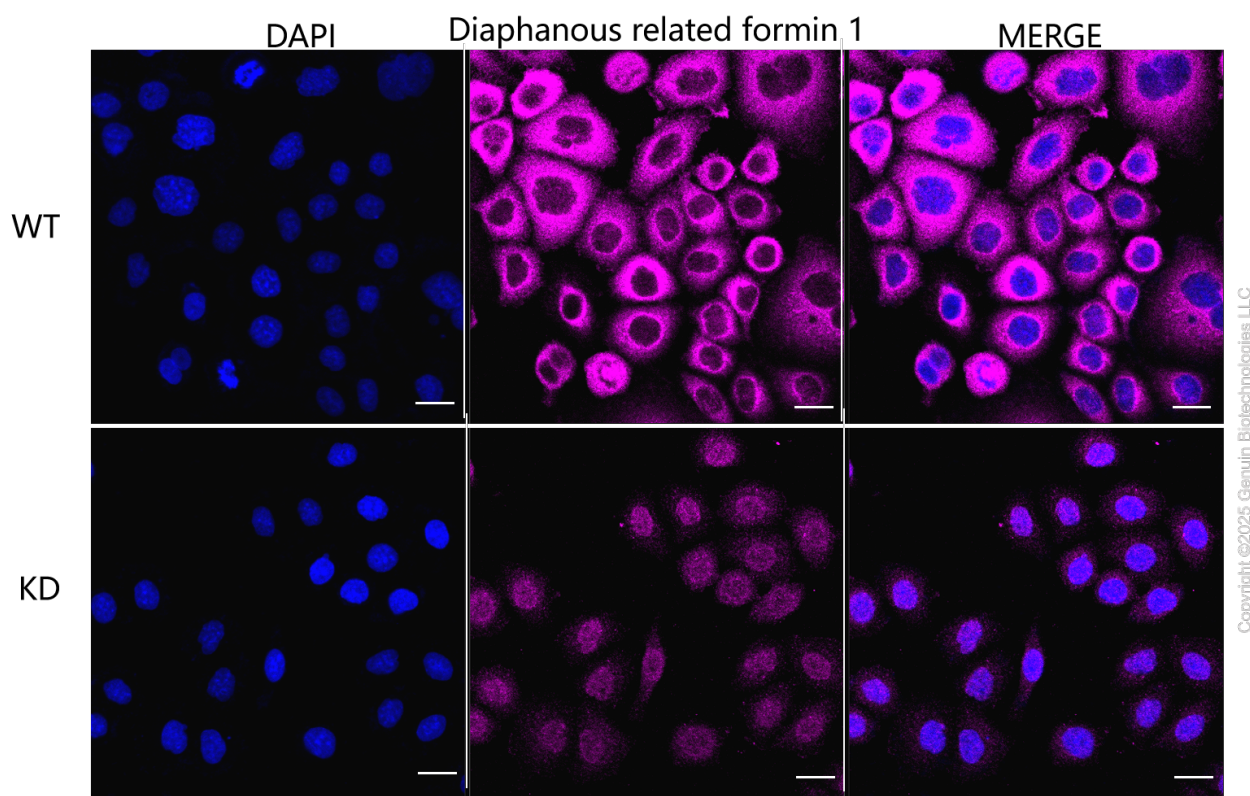
[WWW.GENUINBIOTECH.COM](http://WWW.GENUINBIOTECH.COM)



Copyright ©2025 Genuin Biotechnologies LLC

## Diaphanous related formin 1-Alexa Fluor® 647

Validation of Diaphanous related formin 1 knockdown using flow cytometry. Wild-type(WT, Blue) and knockdown(KD, Green) HeLa cells were stained with anti-Diaphanous related formin 1 antibody (Cat#61132, 1:2,000) and analyzed using BD flow cytometer.



Immunocytochemical staining of HeLa cells using anti-Diaphanous related formin 1 antibody (Cat#61132, 1:1,000), Top panel: wild-type (WT); Bottom panel: Diaphanous related formin 1 shRNA knockdown (KD). Nuclei were stained blue with DAPI; Diaphanous related formin 1 was stained magenta with Alexa Fluor® 647. Scale bar, 20  $\mu$ m. Permeabilization: Triton.