

KD-Validated Anti-C4BPB Recombinant Rabbit Monoclonal Antibody



Catalog #: 61133

Aliases

C4BPB; Complement Component 4 Binding Protein Beta; C4b-Binding Protein Beta Chain; C4BP; Complement Component 4 Binding Protein, Beta Chain; Complement Component 4-Binding Protein, Beta; C4b Binding Protein, Beta Chain

Background

Gene Name: C4BPB
NCBI Gene Entry: [725](#)
UniProt Entry: [P20851](#)

Application Information

Molecular Weight: Predicted, 28 kDa, observed, 42 kDa
Clonality: Rabbit monoclonal antibody
Clone ID: 24GB5940
Species Reactivity: Human
Applications Tested: Western blotting (WB), immunocytochemistry (IC)

Immunogen

A synthesized peptide derived from human C4 binding protein

Isotype

Rabbit IgG

Storage Buffer

Supplied in PBS (pH 7.4) containing 50% glycerol, and 0.02% sodium azide.

Storage

Store at -20 °C for one year.

Recommended Dilutions

Western Blotting (WB): 1:500-1:2,500
Immunocytochemistry (IC): 1:100-1:1,000

Note: This product is for research use only.

Validation Data

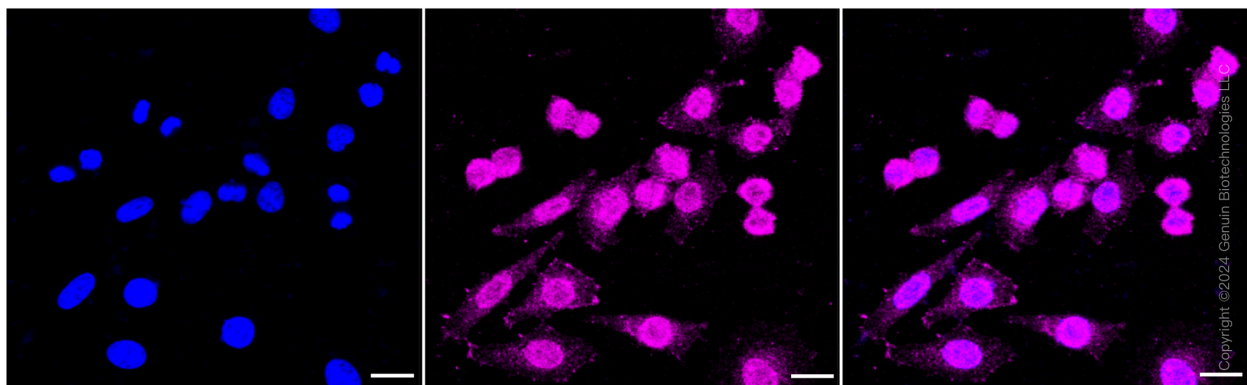
SUPPORT

SUPPORT@GENUINBIOTECH.COM
TEL: +1-540-855-7041

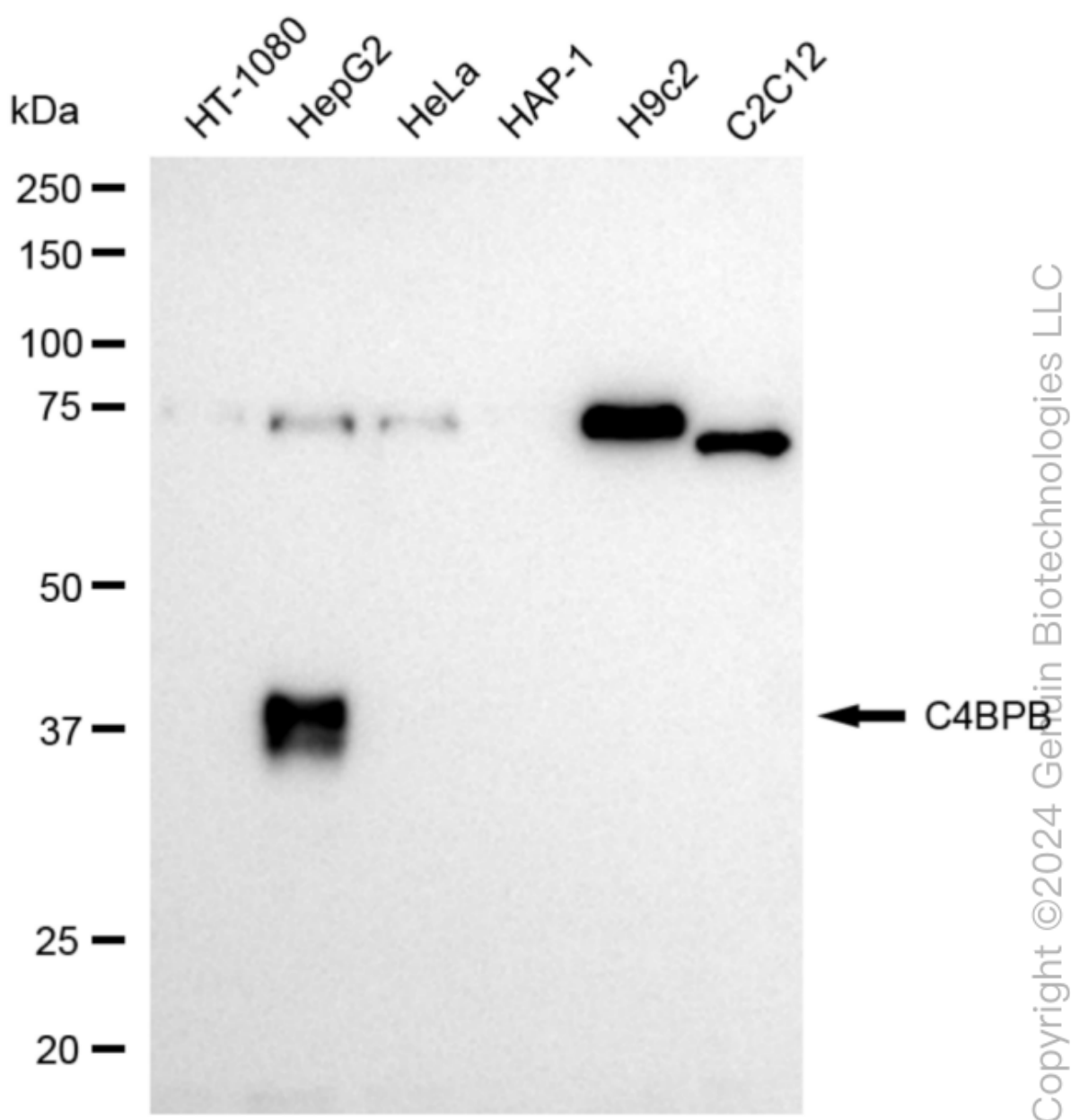
ORDERS

SALES@GENUINBIOTECH.COM
FAX: +1-540-855-7041

WWW.GENUINBIOTECH.COM



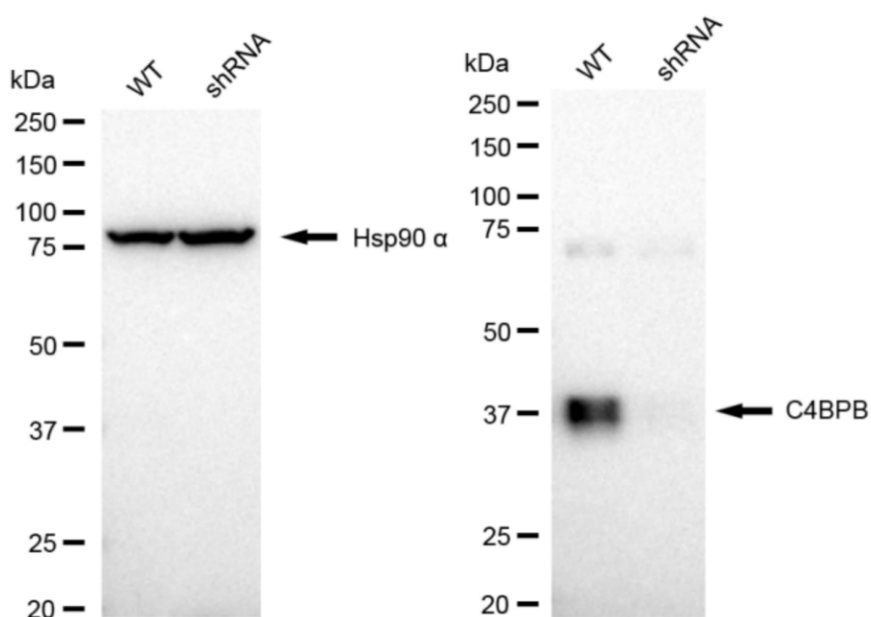
Immunocytochemical staining of HepG2 cells with C4BPB antibody (Cat#61133, 1:1,000). Nuclei were stained blue with DAPI; C4BPB was stained magenta with Alexa Fluor® 647. Images were taken using Leica stellaris 5. Protein abundance based on laser Intensity and smart gain: Medium. Scale bar: 20 μ m.



Western blotting analysis using anti-C4BPB antibody (Cat#61133). Total cell lysates (30 µg) from various cell lines were loaded and separated by SDS-PAGE. The blot was incubated with anti-C4BPB antibody (Cat#61133, 1:2,500) and HRP-conjugated goat anti-rabbit secondary antibody (Cat#201, 1:20,000) respectively. Image was developed using NaQ™ ECL Substrate Kit (Cat#716).

KD-Validated Anti-C4BPB Recombinant Rabbit Monoclonal Antibody

PAGE 4



Copyright ©2024 Genuin Biotechnologies LLC

Western blotting analysis using anti-C4BPB antibody (Cat#61133). C4BPB expression in wild-type (WT) and C4BPB shRNA knockdown (KD) HepG2 cells with 30 µg of total cell lysates. Hsp90 α serves as a loading control. The blot was incubated with anti-C4BPB antibody (Cat#61133, 1:2,500) and HRP-conjugated goat anti-rabbit secondary antibody (Cat#201, 1:20,000) respectively. Image was developed using NaQ™ ECL Substrate Kit (Cat#716).

SUPPORT

SUPPORT@GENUINBIOTECH.COM
TEL: +1-540-855-7041

ORDERS

SALES@GENUINBIOTECH.COM
FAX: +1-540-855-7041

WWW.GENUINBIOTECH.COM