

KD-Validated Anti-Nucleoporin 155 Recombinant Rabbit Monoclonal Antibody



Catalog #: 61137

Aliases

NUP155; Nucleoporin 155; KIAA0791; N155; Nuclear Pore Complex Protein Nup155; 155 KDa Nucleoporin; Nucleoporin 155kDa; Nucleoporin Nup155; Nucleoporin 155kD; ATFB15

Background

Gene Name: NUP155

NCBI Gene Entry: [9631](#)

UniProt Entry: [O75694](#)

Application Information

Molecular Weight: Predicted, 155 kDa, observed, 155 kDa

Clonality: Rabbit monoclonal antibody

Clone ID: 23GB2010

Species Reactivity: Human, mouse, rat

Applications Tested: Western blotting (WB), flow cytometry (FCM), immunocytochemistry (IC)

Immunogen

A synthesized peptide derived from human NUP155

Isotype

Rabbit IgG

Storage Buffer

Supplied in PBS (pH 7.4) containing 50% glycerol, and 0.02% sodium azide.

Storage

Store at -20 °C for one year.

Recommended Dilutions

Western Blotting (WB): 1:1,000-1:5,000

Flow Cytometry (FCM): 1:2,000

Immunocytochemistry (IC): 1:100-1:1,000

Note: This product is for research use only.

Validation Data

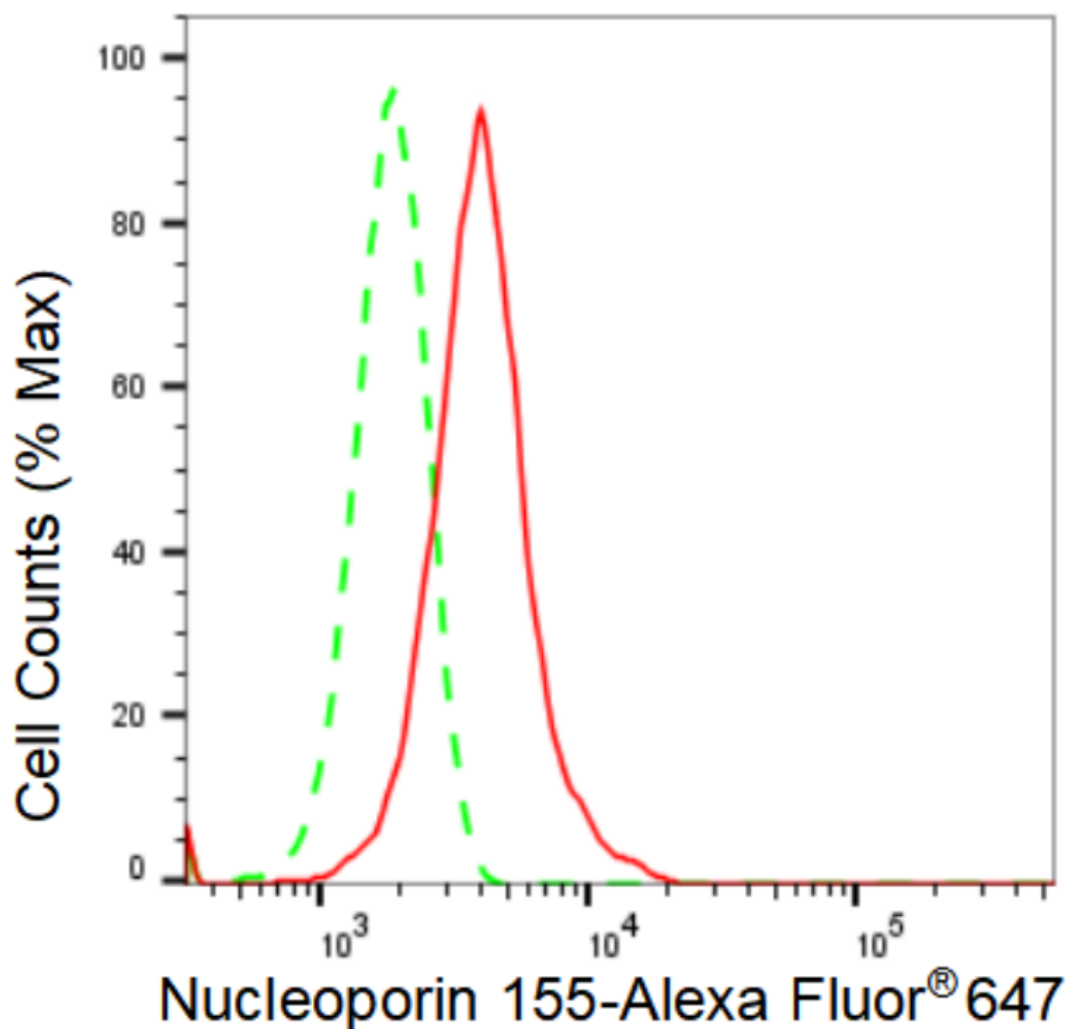
SUPPORT

SUPPORT@GENUINBIOTECH.COM
TEL: +1-540-855-7041

ORDERS

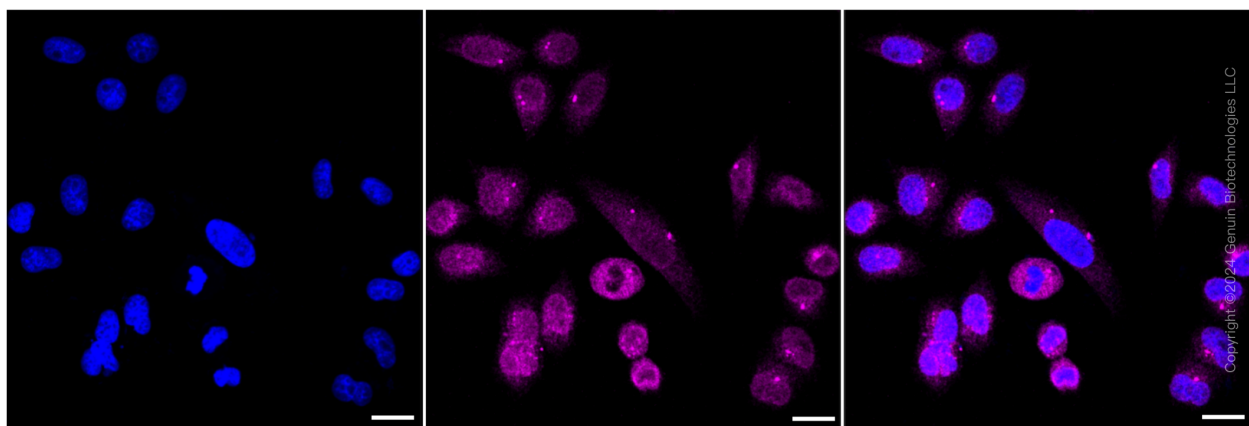
SALES@GENUINBIOTECH.COM
FAX: +1-540-855-7041

WWW.GENUINBIOTECH.COM



Copyright ©2024 Genuin Biotechnologies LLC

Flow cytometric analysis of Nucleoporin 155 expression in HepG2 cells using Nucleoporin 155 antibody (Cat#61137, 1:2,000). Green, isotype control; red, Nucleoporin 155.



Immunocytochemical staining of HepG2 cells with Nucleoporin 155 antibody (Cat#61137, 1:1,000). Nuclei were stained blue with DAPI; Nucleoporin 155 was stained magenta with Alexa

SUPPORT

SUPPORT@GENUINBIOTECH.COM
TEL: +1-540-855-7041

ORDERS

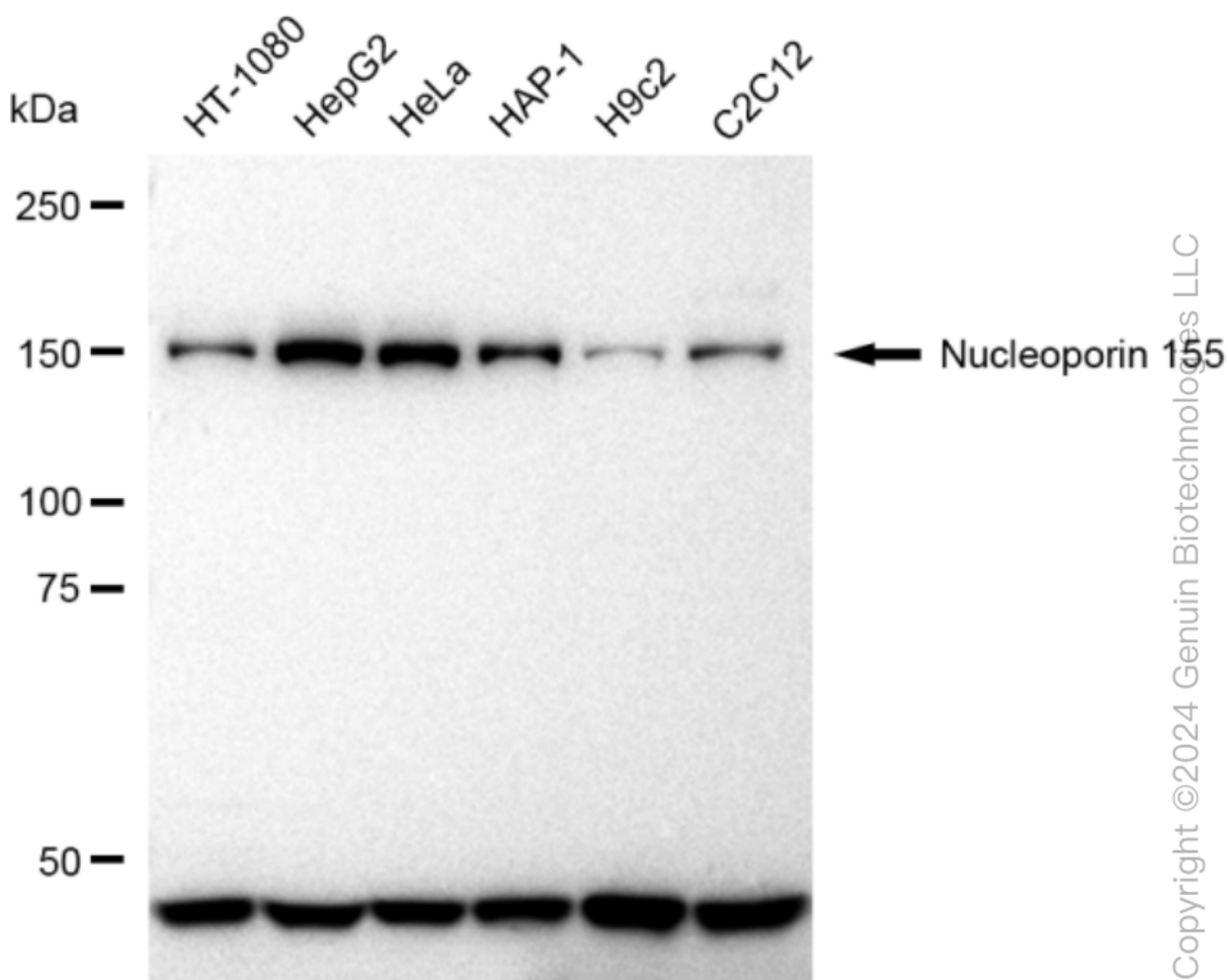
SALES@GENUINBIOTECH.COM
FAX: +1-540-855-7041

WWW.GENUINBIOTECH.COM

KD-Validated Anti-Nucleoporin 155 Recombinant Rabbit Monoclonal Antibody

PAGE 3

Fluor® 647. Images were taken using Leica stellaris 5. Protein abundance based on laser Intensity and smart gain: Medium. Scale bar: 20 μ m.



Western blotting analysis using anti-Nucleoporin 155 antibody (Cat#61137). Total cell lysates (30 μ g) from various cell lines were loaded and separated by SDS-PAGE. The blot was incubated with anti-Nucleoporin 155 antibody (Cat#61137, 1:5,000) and HRP-conjugated goat anti-rabbit secondary antibody (Cat#201, 1:20,000) respectively. Image was developed using FeQ™ ECL Substrate Kit (Cat#226).

SUPPORT

SUPPORT@GENUINBIOTECH.COM
TEL: +1-540-855-7041

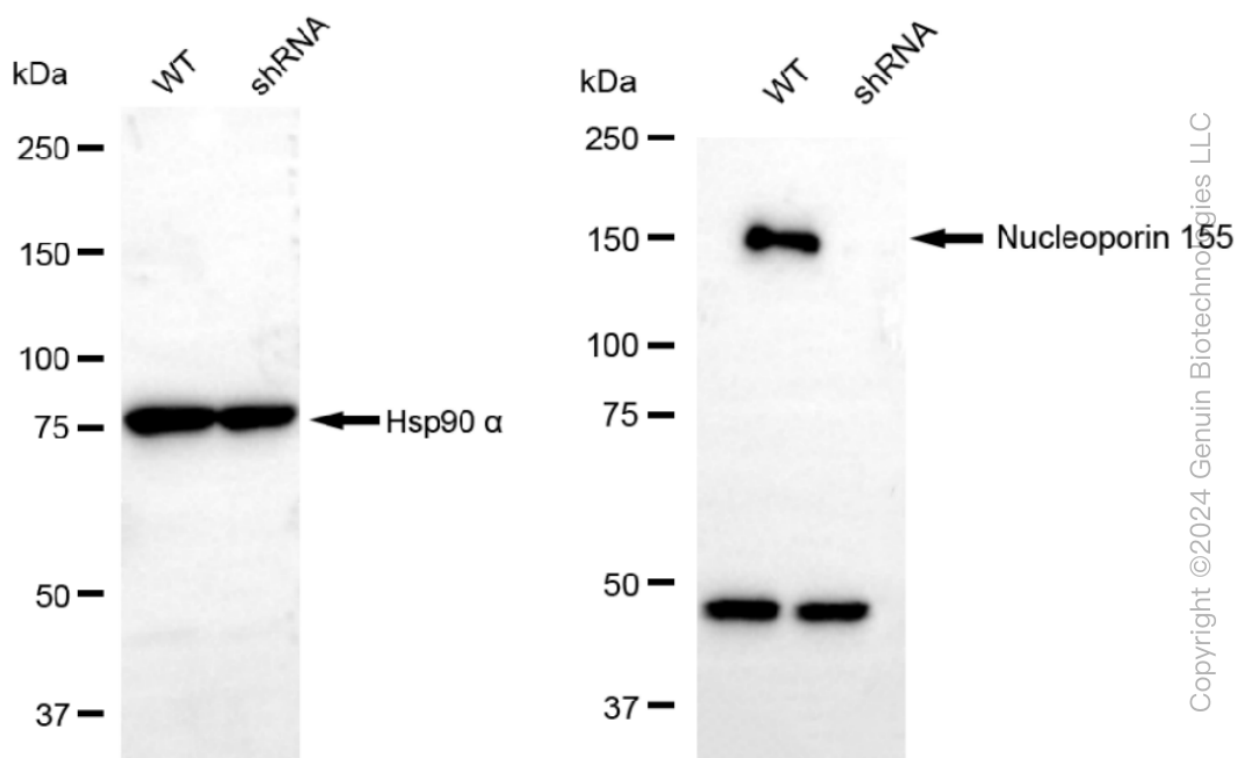
ORDERS

SALES@GENUINBIOTECH.COM
FAX: +1-540-855-7041

WWW.GENUINBIOTECH.COM

KD-Validated Anti-Nucleoporin 155 Recombinant Rabbit Monoclonal Antibody

PAGE 4



Western blotting analysis using anti-Nucleoporin 155 antibody (Cat#61137). Nucleoporin 155 expression in wild type (WT) and nucleoporin 155 shRNA knockdown (KD) HeLa cells with 30 μ g of total cell lysates. Hsp90 α serves as a loading control. The blot was incubated with anti-Nucleoporin 155 antibody (Cat#61137, 1:5,000) and HRP-conjugated goat anti-rabbit secondary antibody (Cat#201, 1:20,000) respectively. Image was developed using FeQ™ ECL Substrate Kit (Cat#226).

SUPPORT

SUPPORT@GENUINBIOTECH.COM
TEL: +1-540-855-7041

ORDERS

SALES@GENUINBIOTECH.COM
FAX: +1-540-855-7041

WWW.GENUINBIOTECH.COM