

# KD-Validated Anti-IQGAP2 Recombinant Rabbit Monoclonal Antibody



**Catalog #: 61138**

## Aliases

IQGAP2; IQ Motif Containing GTPase Activating Protein 2; Ras GTPase-Activating-Like Protein  
IQGAP2

## Background

Gene Name: IQGAP2

NCBI Gene Entry: [10788](#)

UniProt Entry: [Q13576](#)

## Application Information

Molecular Weight: Predicted, 181 kDa, observed, 181 kDa

Clonality: Rabbit monoclonal antibody

Clone ID: 23GB2015

Species Reactivity: Human

Applications Tested: Western blotting (WB), flow cytometry (FCM), immunocytochemistry (IC)

## Immunogen

A synthesized peptide derived from human IQGAP2

## Isotype

Rabbit IgG

## Storage Buffer

Supplied in PBS (pH 7.4) containing 50% glycerol, and 0.02% sodium azide.

## Storage

Store at -20 °C for one year.

## Recommended Dilutions

Western Blotting (WB): 1:1,000-1:5,000

Flow Cytometry (FCM): 1:2,000

Immunocytochemistry (IC): 1:100-1:1,000

**Note:** This product is for research use only.

## Validation Data

---

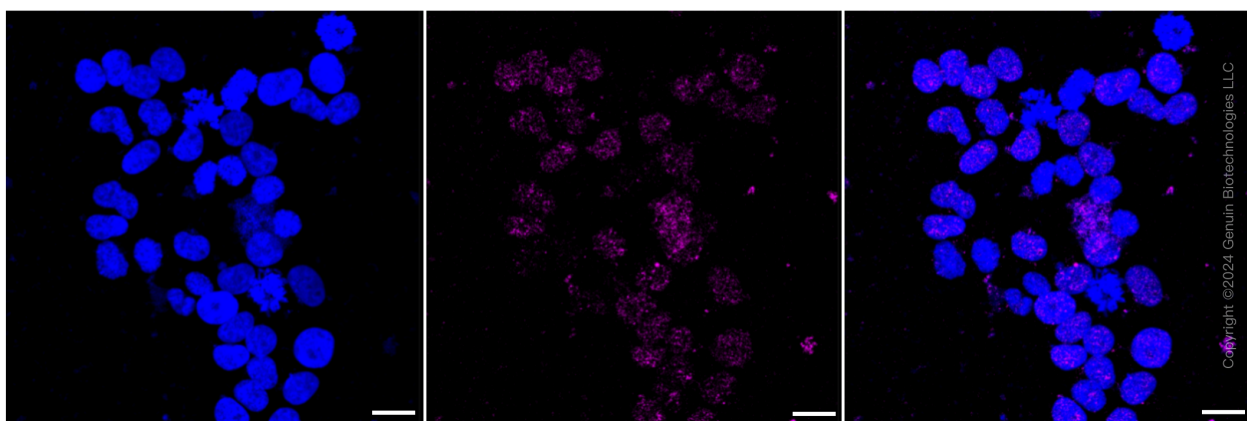
### SUPPORT

SUPPORT@GENUINBIOTECH.COM  
TEL: +1-540-855-7041

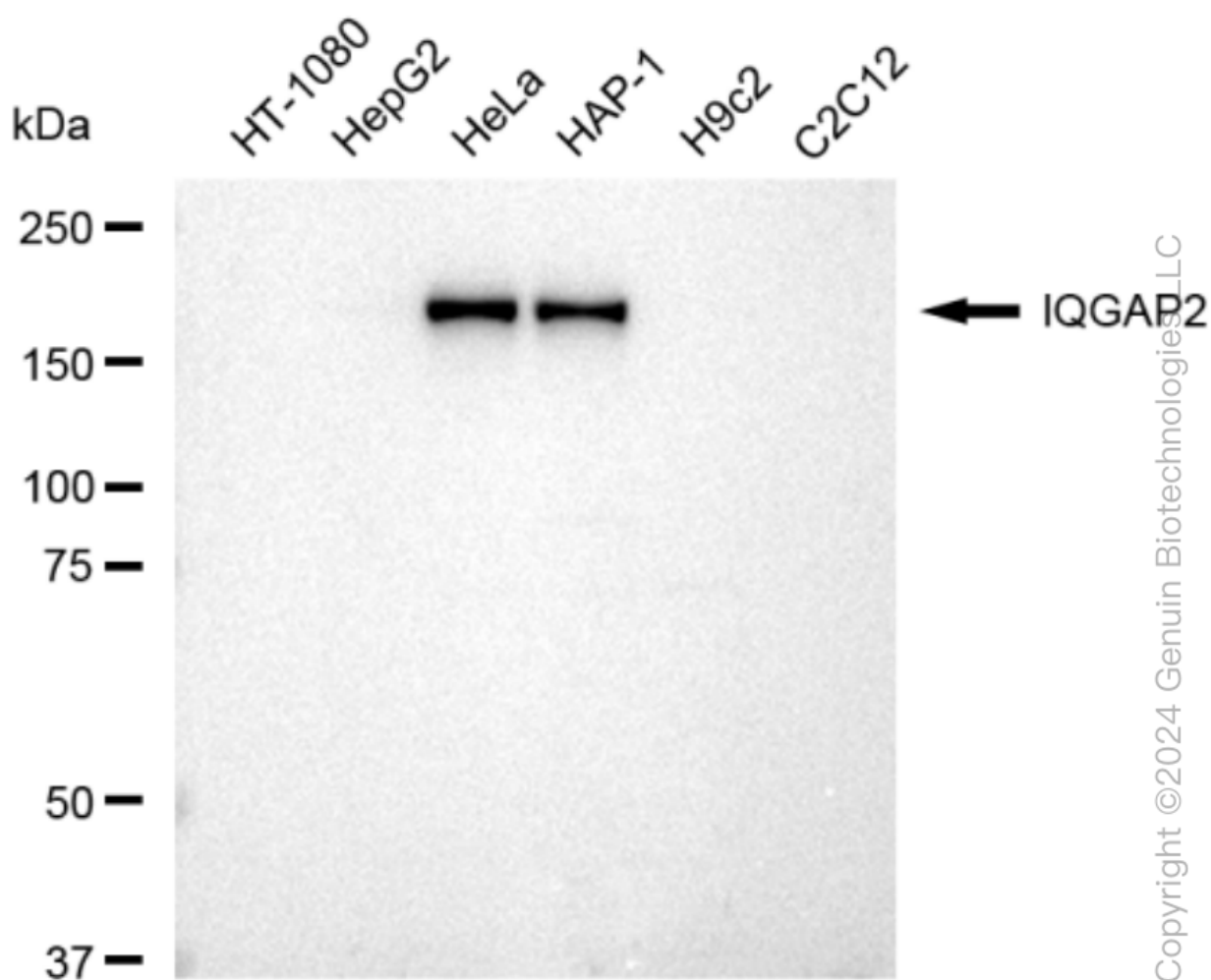
### ORDERS

SALES@GENUINBIOTECH.COM  
FAX: +1-540-855-7041

[WWW.GENUINBIOTECH.COM](http://WWW.GENUINBIOTECH.COM)



Immunocytochemical staining of HeLa cells with IQGAP2 antibody (Cat#61138, 1:1,000). Nuclei were stained blue with DAPI; IQGAP2 was stained magenta with Alexa Fluor® 647. Images were taken using Leica stellaris 5. Protein abundance based on laser Intensity and smart gain: Very low. Scale bar: 20  $\mu$ m.



Western blotting analysis using anti-IQGAP2 antibody (Cat#61138). Total cell lysates (30  $\mu$ g)

## SUPPORT

SUPPORT@GENUINBIOTECH.COM  
TEL: +1-540-855-7041

## ORDERS

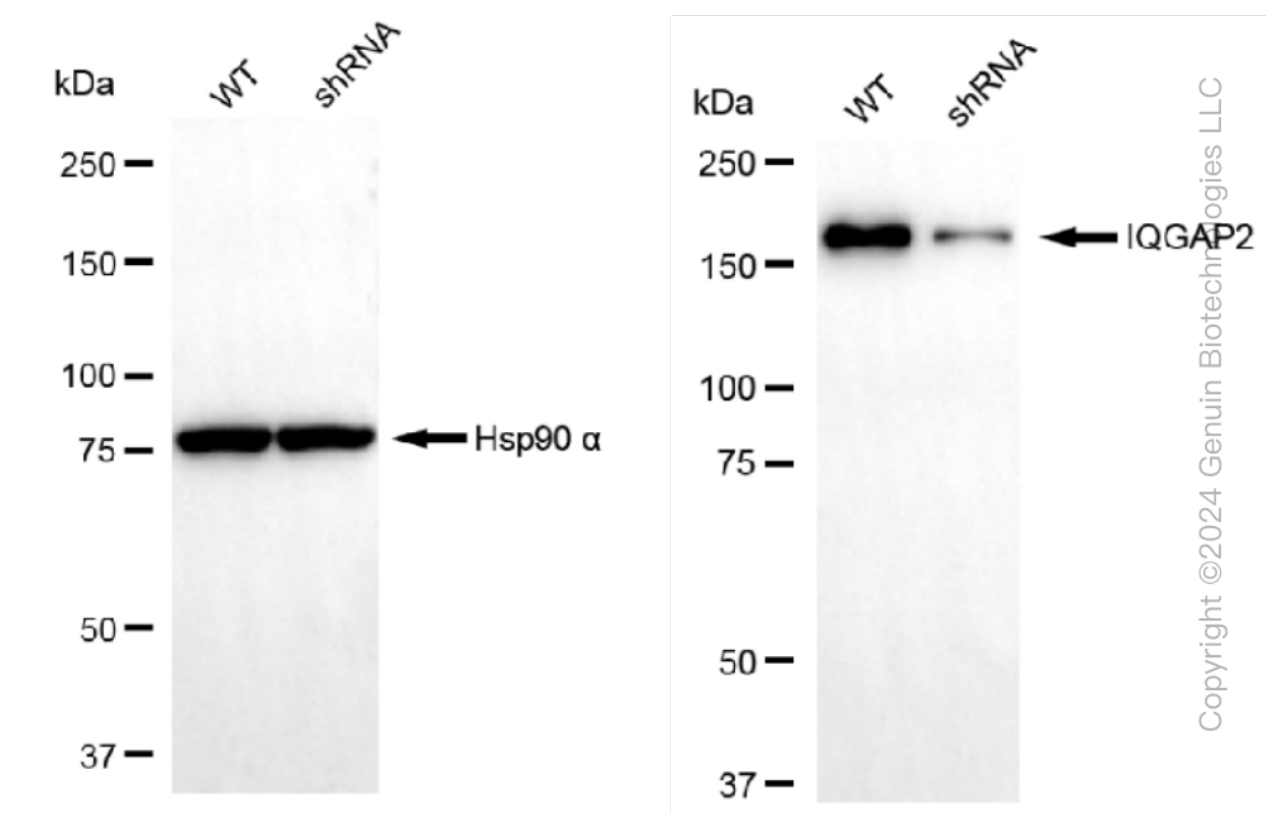
SALES@GENUINBIOTECH.COM  
FAX: +1-540-855-7041

[WWW.GENUINBIOTECH.COM](http://WWW.GENUINBIOTECH.COM)

## KD-Validated Anti-IQGAP2 Recombinant Rabbit Monoclonal Antibody

PAGE 3

from various cell lines were loaded and separated by SDS-PAGE. The blot was incubated with anti-IQGAP2 antibody (Cat#61138, 1:5,000) and HRP-conjugated goat anti-rabbit secondary antibody (Cat#201, 1:20,000) respectively. Image was developed using FeQ™ ECL Substrate Kit (Cat#226).



Western blotting analysis using anti-IQGAP2 antibody (Cat#61138). IQGAP2 expression in wild type (WT) and IQGAP2 shRNA knockdown (KD) 293T cells with 30 µg of total cell lysates. Hsp90 α serves as a loading control. The blot was incubated with anti-IQGAP2 antibody (Cat#61138, 1:5,000) and HRP-conjugated goat anti-rabbit secondary antibody (Cat#201, 1:20,000) respectively. Image was developed using FeQ™ ECL Substrate Kit (Cat#226).

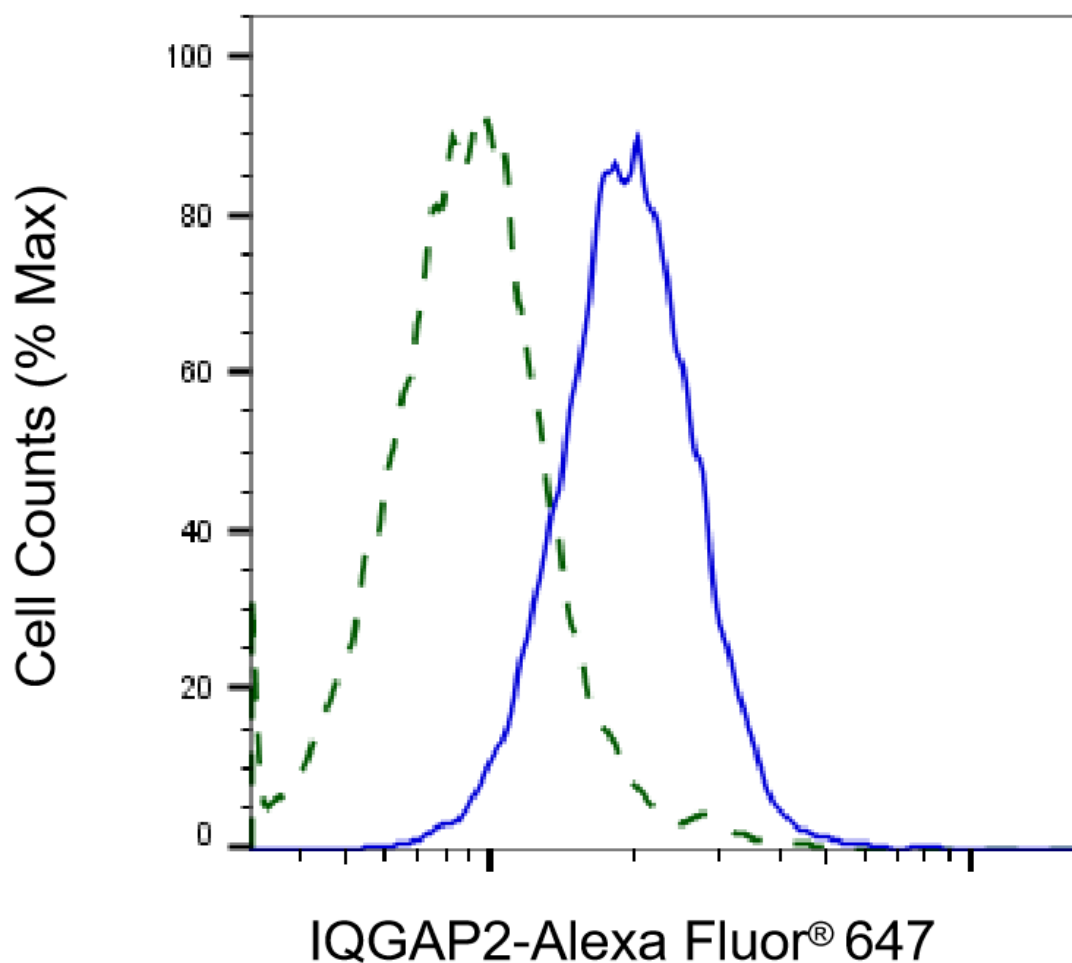
### SUPPORT

SUPPORT@GENUINBIOTECH.COM  
TEL: +1-540-855-7041

### ORDERS

SALES@GENUINBIOTECH.COM  
FAX: +1-540-855-7041

[WWW.GENUINBIOTECH.COM](http://WWW.GENUINBIOTECH.COM)



Copyright ©2025 Genuin Biotechnologies LLC

Validation of IQGAP2 knockdown using flow cytometry. Wild-type(WT, Blue) and knockdown(KD, Green) 293T cells were stained with anti-IQGAP2 antibody (Cat#61138, 1:2,000) and analyzed using BD flow cytometer.