

KD-Validated Anti-CDKN2C Recombinant Rabbit Monoclonal Antibody



Catalog #: 61139

Aliases

CDKN2C; Cyclin Dependent Kinase Inhibitor 2C; INK4C; P18; Cyclin-Dependent Kinase Inhibitor 2C (P18, Inhibits CDK4); Cyclin-Dependent Kinase 4 Inhibitor C; P18-INK6; Cyclin-Dependent Kinase 6 Inhibitor P18; Cyclin-Dependent Kinase 6 Inhibitor; Cyclin-Dependent Inhibitor; CDK6 Inhibitor P18; P18-INK4C; P18-INK4c; CDKN6

Background

Gene Name: CDKN2C

NCBI Gene Entry: [1031](#)

UniProt Entry: [P42773](#)

Application Information

Molecular Weight: Predicted, 18 kDa, observed, 15 kDa

Clonality: Rabbit monoclonal antibody

Clone ID: 24GB5945

Species Reactivity: Human, mouse, rat

Applications Tested: Western blotting (WB), flow cytometry (FCM), immunocytochemistry (IC)

Immunogen

A synthesized peptide derived from human CDKN2C

Isotype

Rabbit IgG

Storage Buffer

Supplied in PBS (pH 7.4) containing 50% glycerol, and 0.02% sodium azide.

Storage

Store at -20 °C for one year.

Recommended Dilutions

Western Blotting (WB): 1:1,000-1:5,000

Flow Cytometry (FCM): 1:2,000

Immunocytochemistry (IC): 1:100-1:1,000

SUPPORT

SUPPORT@GENUINBIOTECH.COM
TEL: +1-540-855-7041

ORDERS

SALES@GENUINBIOTECH.COM
FAX: +1-540-855-7041

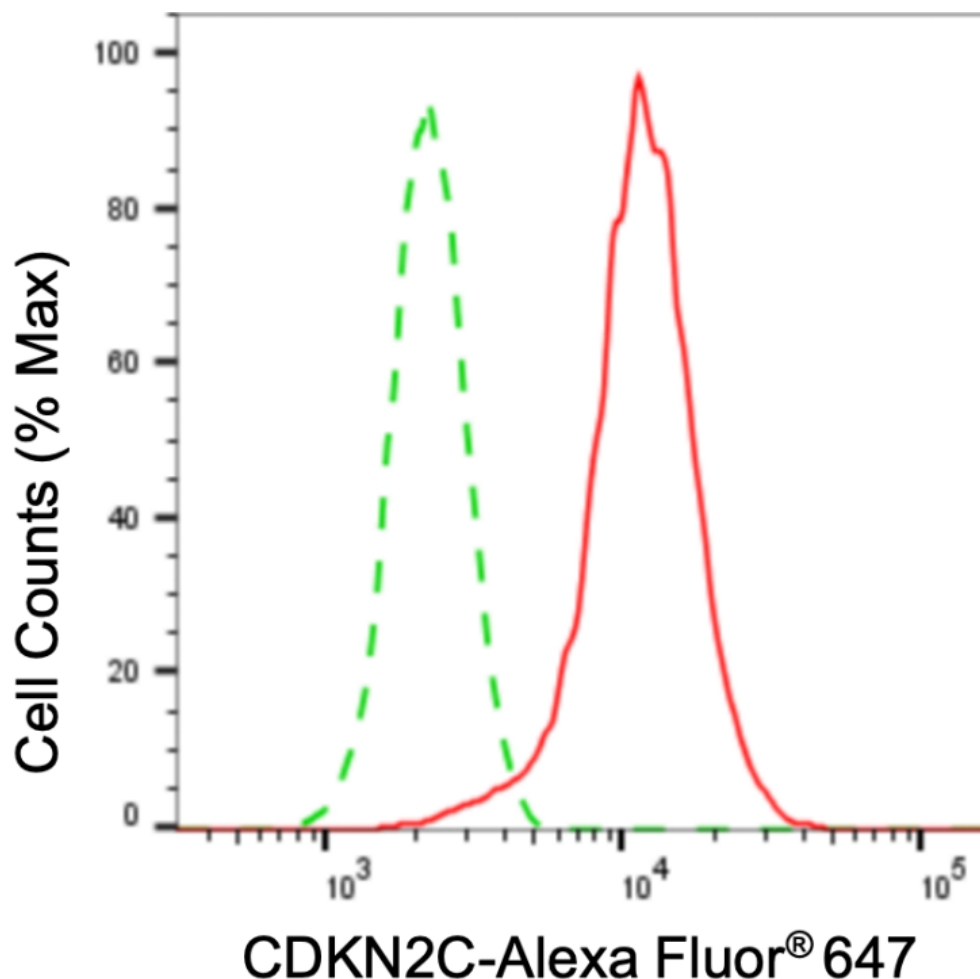
WWW.GENUINBIOTECH.COM

KD-Validated Anti-CDKN2C Recombinant Rabbit Monoclonal Antibody

PAGE 2

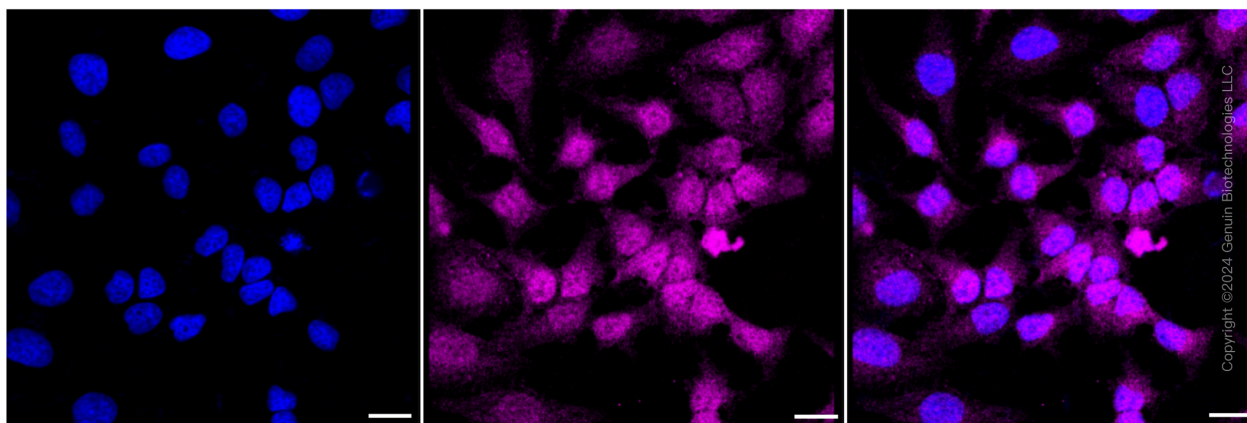
Note: This product is for research use only.

Validation Data



Copyright ©2024 Genuin Biotechnologies LLC

Flow cytometric analysis of CDKN2C expression in HeLa cells using CDKN2C antibody (Cat#61139, 1:2,000). Green, isotype control; red, CDKN2C.



Copyright ©2024 Genuin Biotechnologies LLC

Immunocytochemical staining of HeLa cells with anti-CDKN2C antibody (Cat#61139, 1:1,000).

SUPPORT

SUPPORT@GENUINBIOTECH.COM
TEL: +1-540-855-7041

ORDERS

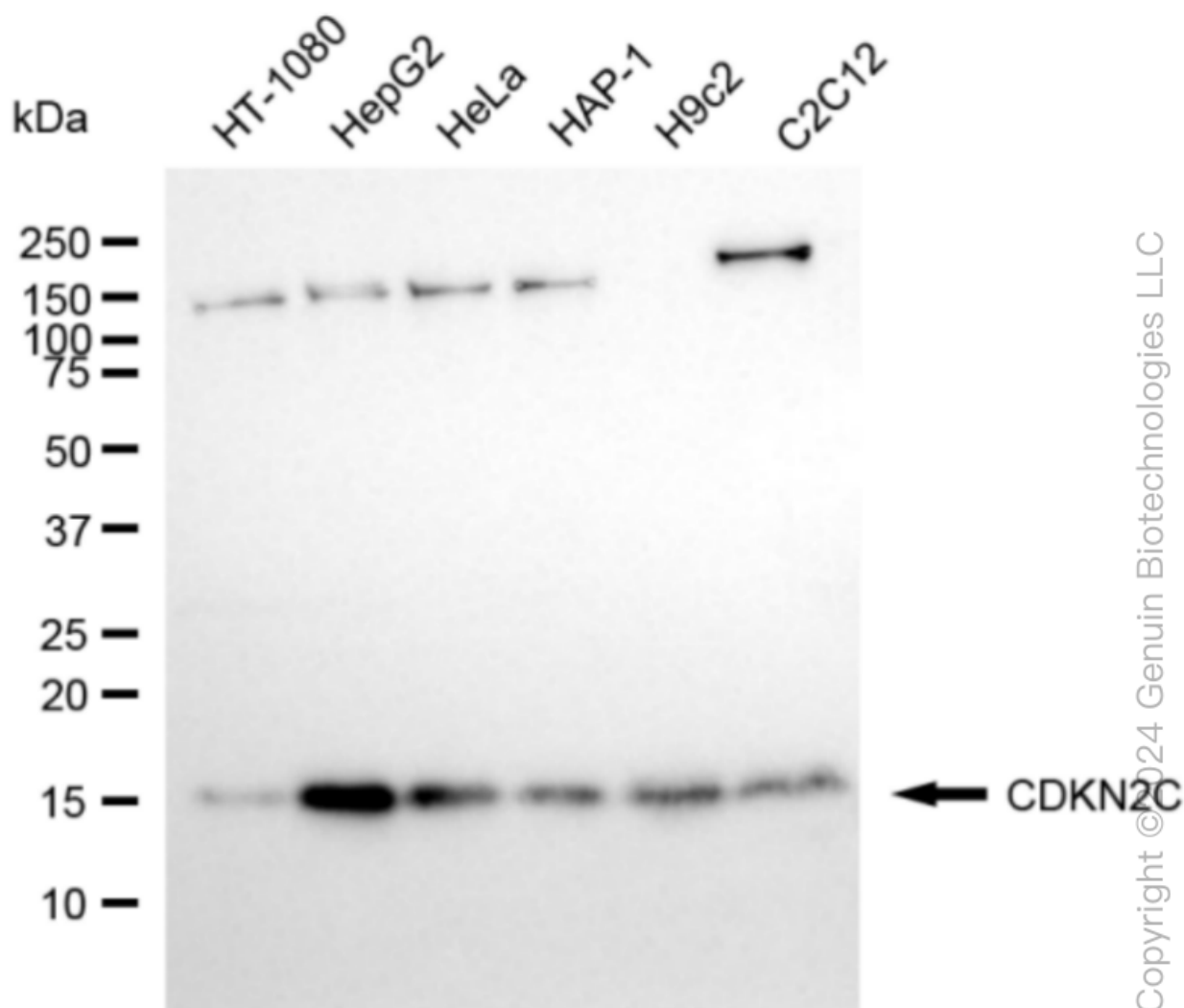
SALES@GENUINBIOTECH.COM
FAX: +1-540-855-7041

WWW.GENUINBIOTECH.COM

KD-Validated Anti-CDKN2C Recombinant Rabbit Monoclonal Antibody

PAGE 3

Nuclei were stained blue with DAPI; CDKN2C was stained magenta with Alexa Fluor® 647. Images were taken using Leica stellaris 5. Protein abundance based on laser Intensity and smart gain: Medium. Scale bar: 20 μ m.



Western blotting analysis using anti-CDKN2C antibody (Cat#61139). Total cell lysates (30 μ g) from various cell lines were loaded and separated by SDS-PAGE. The blot was incubated with anti-CDKN2C antibody (Cat#61139, 1:5,000) and HRP-conjugated goat anti-rabbit secondary antibody (Cat#201, 1:20,000) respectively. Image was developed using NaQ™ ECL Substrate Kit (Cat#716).

SUPPORT

SUPPORT@GENUINBIOTECH.COM
TEL: +1-540-855-7041

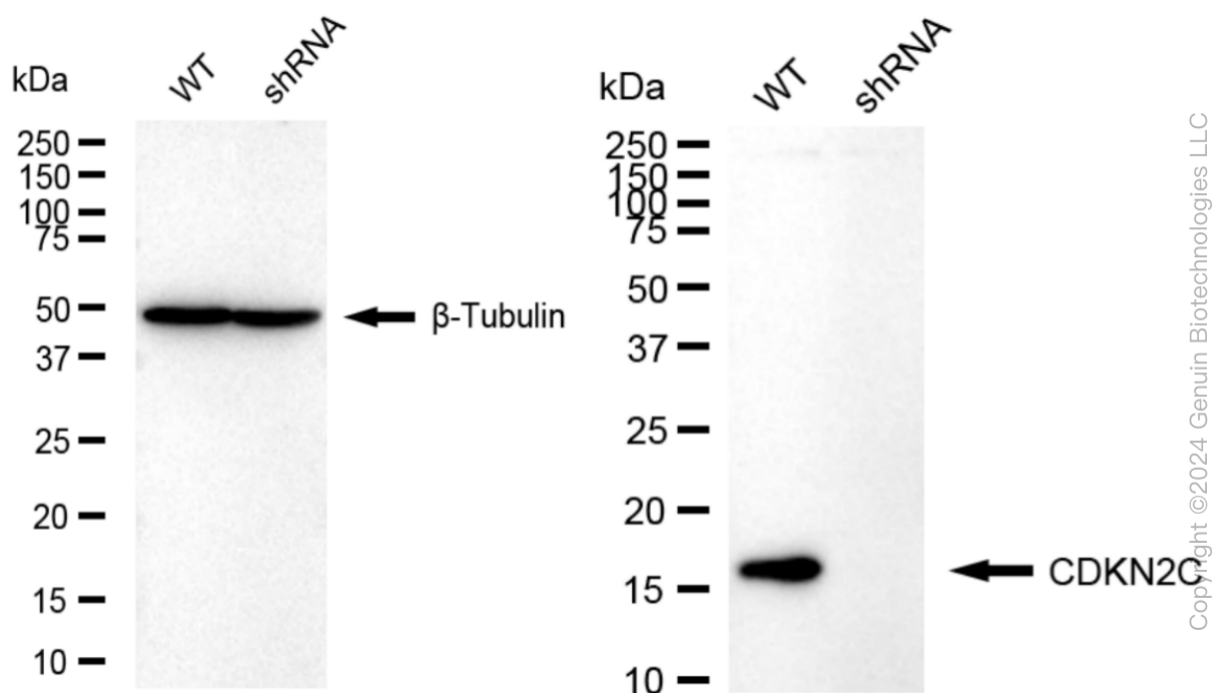
ORDERS

SALES@GENUINBIOTECH.COM
FAX: +1-540-855-7041

WWW.GENUINBIOTECH.COM

KD-Validated Anti-CDKN2C Recombinant Rabbit Monoclonal Antibody

PAGE 4



Western blotting analysis using anti-CDKN2C antibody (Cat#61139). CDKN2C expression in wild type (WT) and CDKN2C shRNA knockdown (KD) HeLa cells with 20 μ g of total cell lysates. β -Tubulin serves as a loading control. The blot was incubated with anti-CDKN2C antibody (Cat#61139, 1:5,000) and HRP-conjugated goat anti-rabbit secondary antibody (Cat#201, 1:20,000) respectively. Image was developed using NaQTM ECL Substrate Kit (Cat#716).

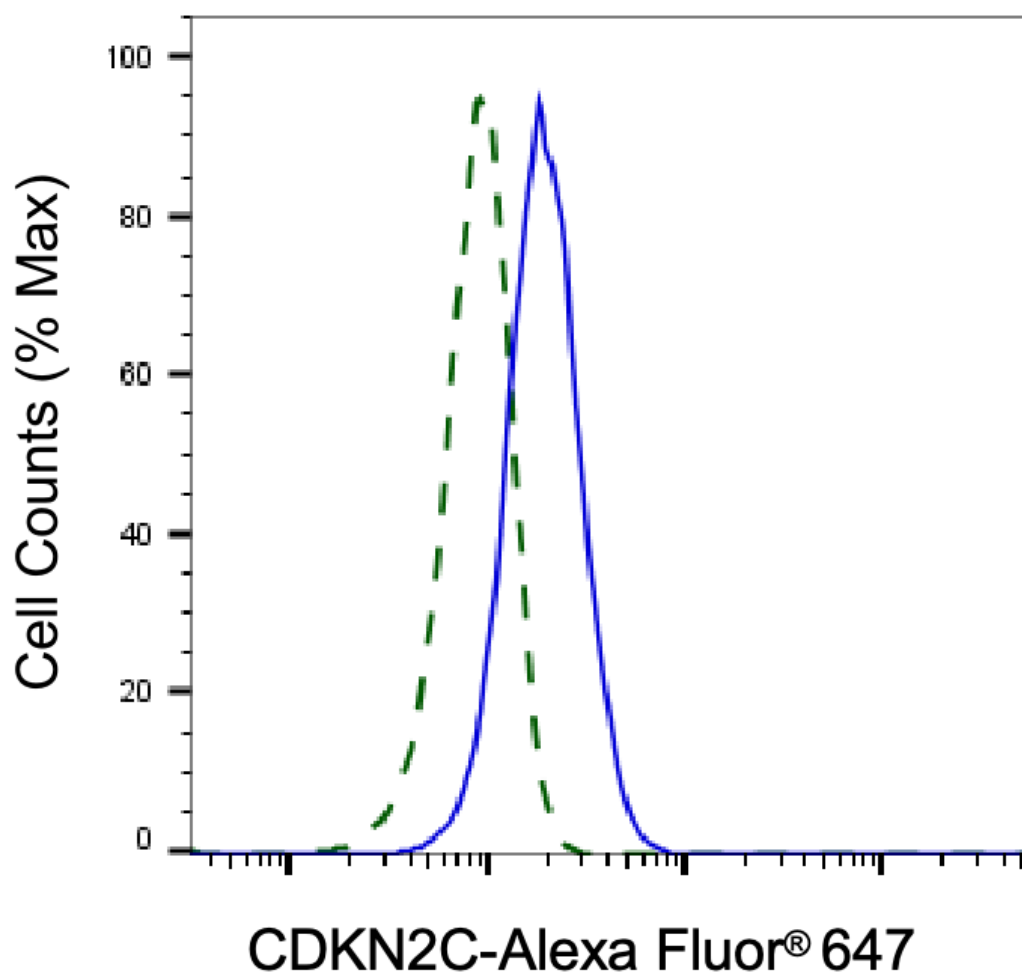
SUPPORT

SUPPORT@GENUINBIOTECH.COM
TEL: +1-540-855-7041

ORDERS

SALES@GENUINBIOTECH.COM
FAX: +1-540-855-7041

WWW.GENUINBIOTECH.COM



Copyright ©2025 Genuin Biotechnologies LLC

Validation of CDKN2C knockdown using flow cytometry. Wild-type(WT, Blue) and knockdown(KD, Green) HeLa cells were stained with anti-CDKN2C antibody (Cat#61139, 1:2,000) and analyzed using BD flow cytometer.