

KD-Validated Anti-Glycophorin C Recombinant Rabbit Monoclonal Antibody



Catalog #: 61143

Aliases

GYPC; Glycophorin C (Gerbich Blood Group); GPC; Sialoglycoprotein D; CD236R; CD236; GYPD; GPD; Glycoprotein Beta; Gerbich Antigen; Glycoconnectin; Glycophorin-C; Glycophorin-D; PAS-2'; GE; Gerbich Blood Group Antigen; Glycophorin D; CD236 Antigen; PAS-2; GLPC; Ge

Background

Gene Name: GYPC

NCBI Gene Entry: [2995](#)

UniProt Entry: [P04921](#)

Application Information

Molecular Weight: Predicted, 14 kDa, observed, 39 kDa

Clonality: Rabbit monoclonal antibody

Clone ID: 24GB5960

Species Reactivity: Human

Applications Tested: Western blotting (WB), flow cytometry (FCM), immunocytochemistry (IC)

Immunogen

A synthesized peptide derived from human Glycophorin C

Isotype

Rabbit IgG

Storage Buffer

Supplied in PBS (pH 7.4) containing 50% glycerol, and 0.02% sodium azide.

Storage

Store at -20 °C for one year.

Recommended Dilutions

Western Blotting (WB): 1:1,000-1:5,000

Flow Cytometry (FCM): 1:2,000

Immunocytochemistry (IC): 1:100-1:1,000

SUPPORT

SUPPORT@GENUINBIOTECH.COM
TEL: +1-540-855-7041

ORDERS

SALES@GENUINBIOTECH.COM
FAX: +1-540-855-7041

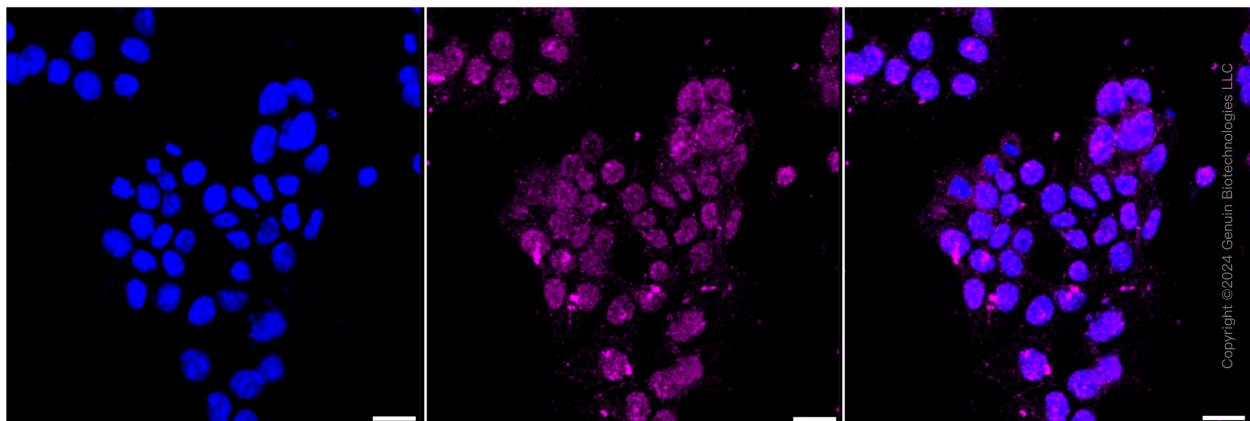
WWW.GENUINBIOTECH.COM

KD-Validated Anti-Glycophorin C Recombinant Rabbit Monoclonal Antibody

PAGE 2

Note: This product is for research use only.

Validation Data



Immunocytochemical staining of HAP1 cells with anti-glycophorin C antibody (Cat#61143, 1:1,000). Nuclei were stained blue with DAPI; Glycophorin C was stained magenta with Alexa Fluor® 647. Images were taken using Leica stellaris 5. Protein abundance based on laser Intensity and smart gain: Medium. Scale bar: 20 μ m.

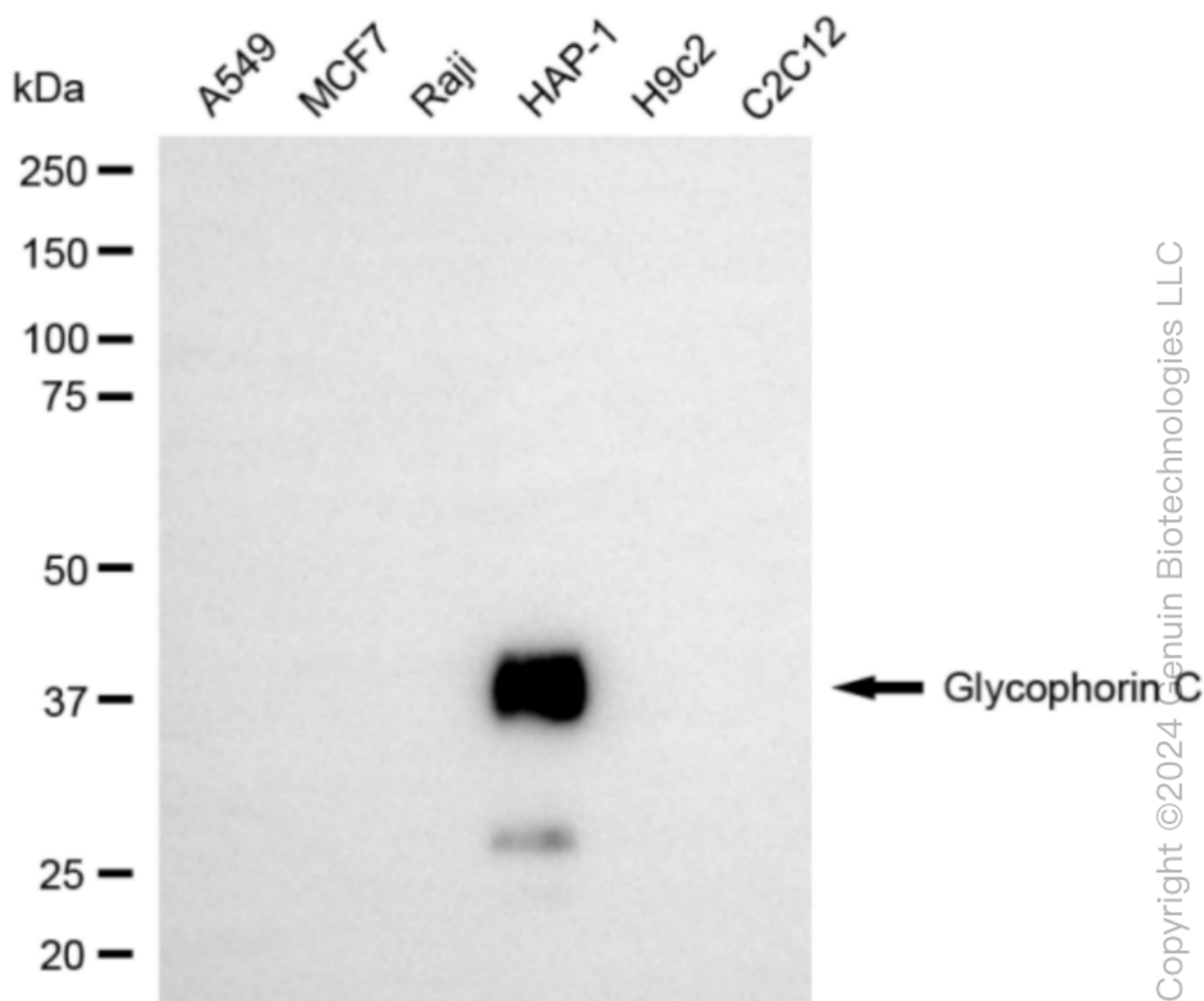
SUPPORT

SUPPORT@GENUINBIOTECH.COM
TEL: +1-540-855-7041

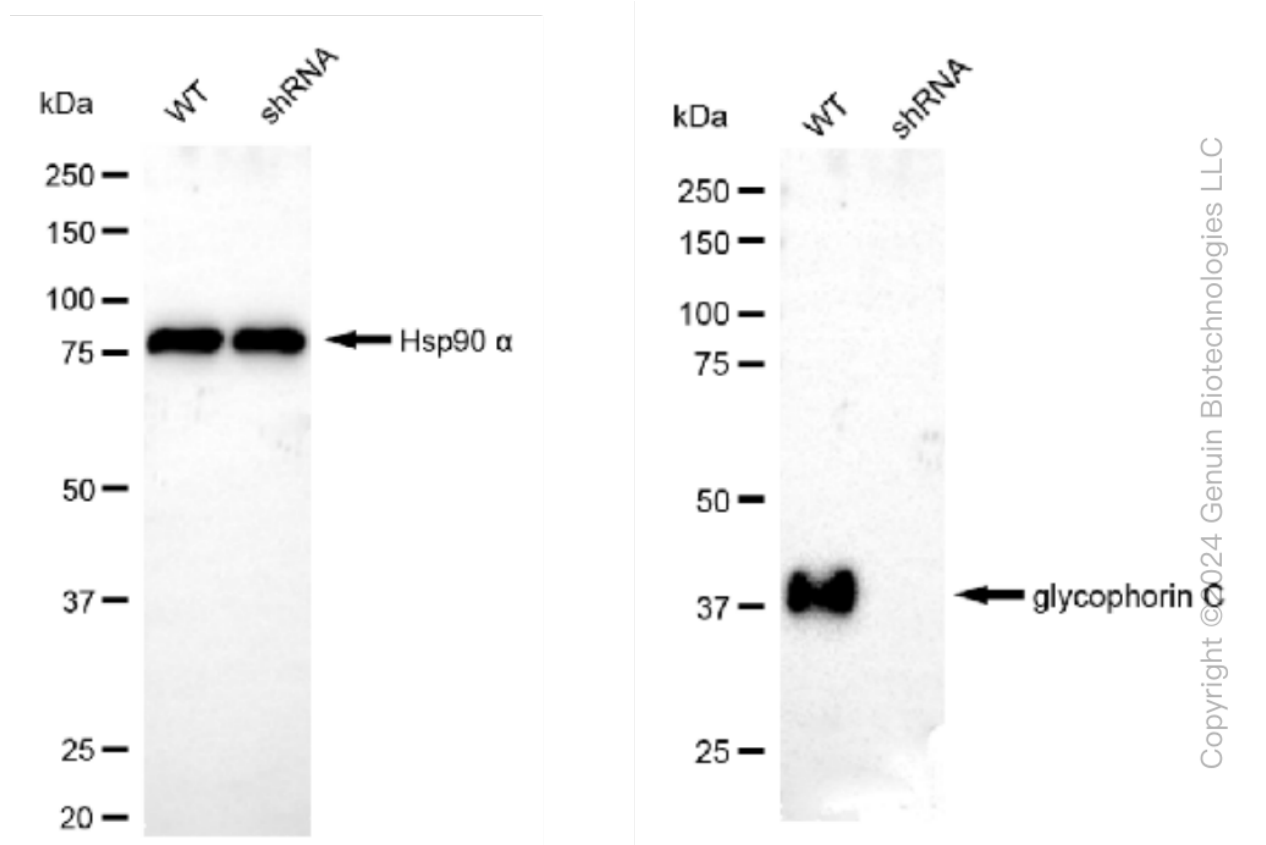
ORDERS

SALES@GENUINBIOTECH.COM
FAX: +1-540-855-7041

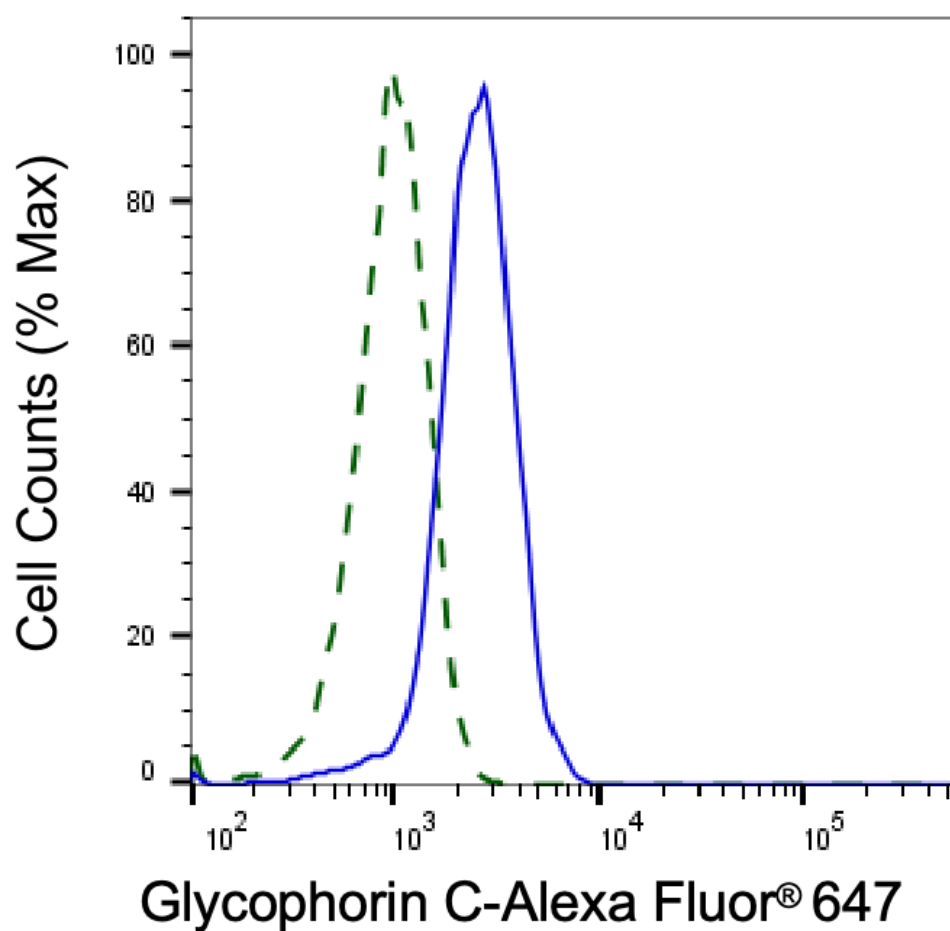
WWW.GENUINBIOTECH.COM



Western blotting analysis using anti-glycophorin C antibody (Cat#61143). Total cell lysates (30 µg) from various cell lines were loaded and separated by SDS-PAGE. The blot was incubated with anti-glycophorin C antibody (Cat#61143, 1:5,000) and HRP-conjugated goat anti-rabbit secondary antibody (Cat#201, 1:20,000) respectively. Image was developed using NaQ™ ECL Substrate Kit (Cat#716).



Western blotting analysis using anti-glycophorin C antibody (Cat#61143). Glycophorin C expression in wild-type (WT) and GYPC shRNA knockdown (KD) HAP-1 cells with 20 µg of total cell lysates. Hsp90 α serves as a loading control. The blot was incubated with anti-glycophorin C antibody (Cat#61143, 1:5,000) and HRP-conjugated goat anti-rabbit secondary antibody (Cat#201, 1:20,000) respectively. Image was developed using NaQ™ ECL Substrate Kit (Cat#716). GYPC, glycophorin C (Gerbich blood group).



Validation of Glycophorin C knockdown using flow cytometry. Wild-type(WT, Blue) and knockdown(KD, Green) HSHC cells were stained with anti-Glycophorin C antibody (Cat#61143, 1:2,000) and analyzed using BD flow cytometer.