

KD-Validated Anti-Leucine aminopeptidase 3 Recombinant Rabbit Monoclonal Antibody



Catalog #: 61144

Aliases

LAP3; Leucine Aminopeptidase 3; LAPEP; Peptidase S; PEPS; LAP; Cysteinylglycine-S-Conjugate Dipeptidase; Cytosol Aminopeptidase; Proline Aminopeptidase; Leucyl Aminopeptidase; Prolyl Aminopeptidase; EC 3.4.11.1; Epididymis Secretory Protein Li 106; EC 3.4.13.23; EC 3.4.11.5; HEL-S-106; EC 3.4.11; LAP-3

Background

Gene Name: LAP3

NCBI Gene Entry: [51056](#)

UniProt Entry: [P28838](#)

Application Information

Molecular Weight: Predicted, 56 kDa, observed, 52 kDa

Clonality: Rabbit monoclonal antibody

Clone ID: 24GB5965

Species Reactivity: Human, rat

Applications Tested: Western blotting (WB), flow cytometry (FCM), immunocytochemistry (IC)

Immunogen

A synthesized peptide derived from human LAP3

Isotype

Rabbit IgG

Storage Buffer

Supplied in PBS (pH 7.4) containing 50% glycerol, and 0.02% sodium azide.

Storage

Store at -20 °C for one year.

Recommended Dilutions

Western Blotting (WB): 1:1,000-1:5,000

Flow Cytometry (FCM): 1:2,000

Immunocytochemistry (IC): 1:100-1:1,000

SUPPORT

SUPPORT@GENUINBIOTECH.COM
TEL: +1-540-855-7041

ORDERS

SALES@GENUINBIOTECH.COM
FAX: +1-540-855-7041

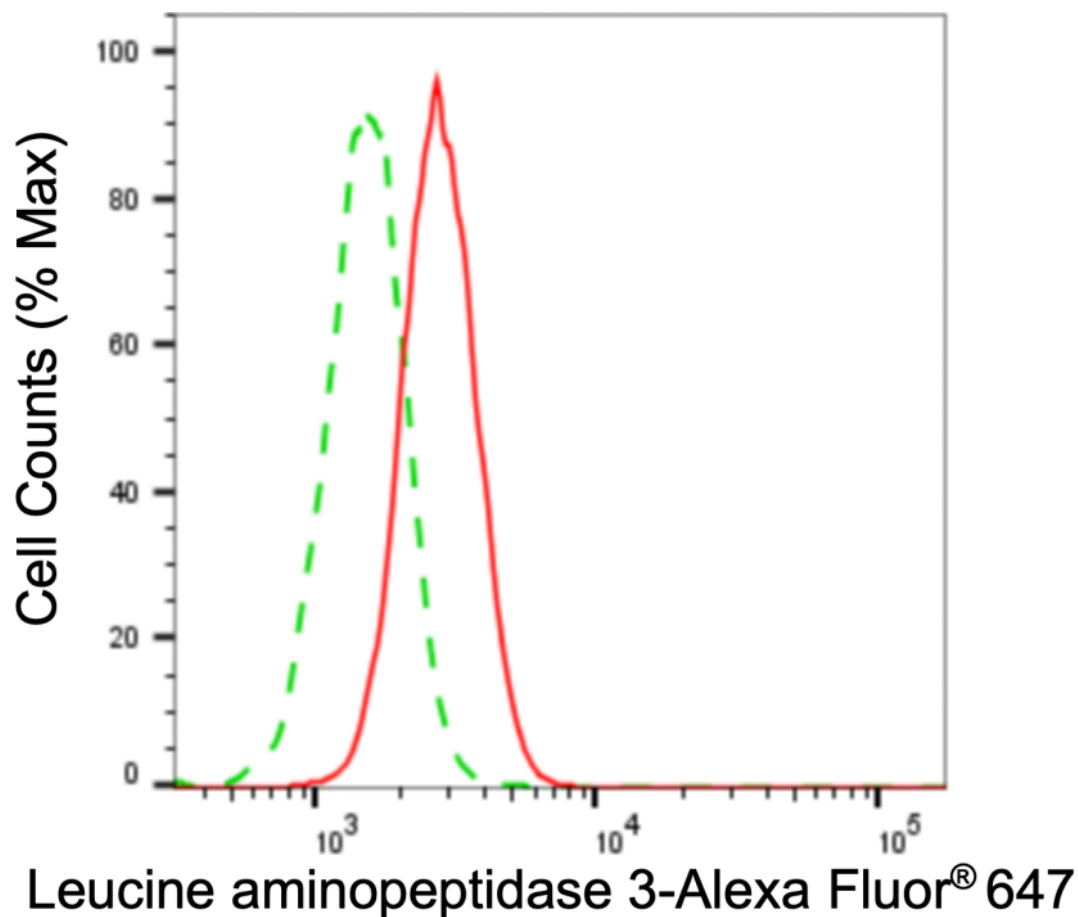
WWW.GENUINBIOTECH.COM

KD-Validated Anti-Leucine aminopeptidase 3 Recombinant Rabbit Monoclonal Antibody

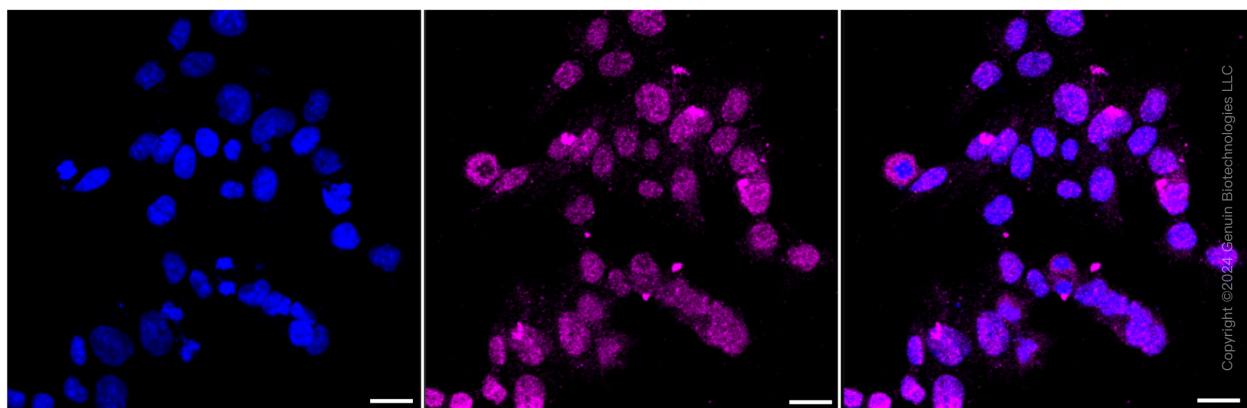
PAGE 2

Note: This product is for research use only.

Validation Data



Flow cytometric analysis of leucine aminopeptidase 3 expression in HAP-1 cells using anti-Leucine aminopeptidase 3 antibody (Cat#61144, 1:2,000). Green, isotype control; red, leucine aminopeptidase 3.



Immunocytochemical staining of HAP-1 cells with anti-leucine aminopeptidase 3 antibody

SUPPORT

SUPPORT@GENUINBIOTECH.COM
TEL: +1-540-855-7041

ORDERS

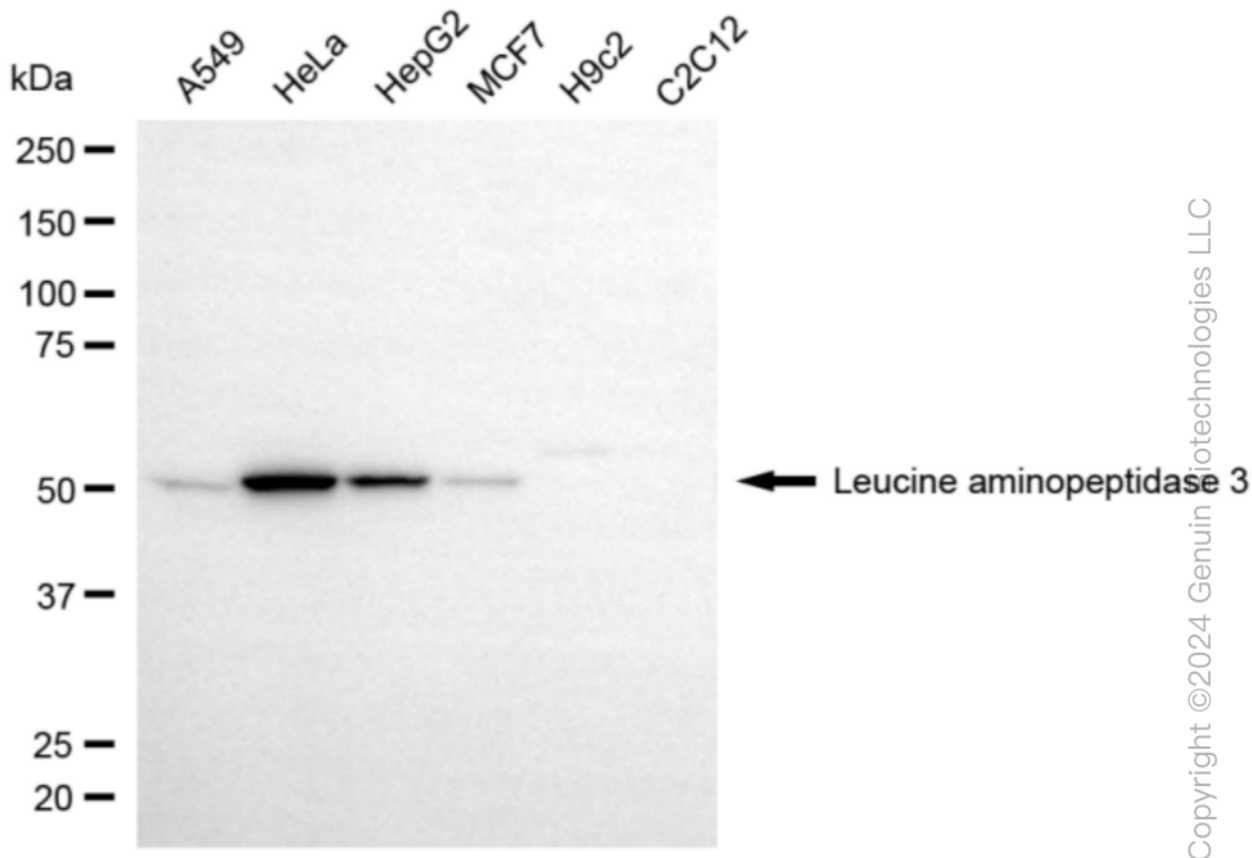
SALES@GENUINBIOTECH.COM
FAX: +1-540-855-7041

WWW.GENUINBIOTECH.COM

KD-Validated Anti-Leucine aminopeptidase 3 Recombinant Rabbit Monoclonal Antibody

PAGE 3

(Cat#61144, 1:1,000). Nuclei were stained blue with DAPI; Leucine aminopeptidase 3 was stained magenta with Alexa Fluor® 647. Images were taken using Leica stellaris 5. Protein abundance based on laser Intensity and smart gain: Medium. Scale bar, 20 μ m.



Western blotting analysis using anti-leucine aminopeptidase 3 antibody (Cat#61144). Total cell lysates (30 μ g) from various cell lines were loaded and separated by SDS-PAGE. The blot was incubated with anti-leucine aminopeptidase 3 antibody (Cat#61144, 1:5,000) and HRP-conjugated goat anti-rabbit secondary antibody (Cat#201, 1:20,000) respectively. Image was developed using NaQ™ ECL Substrate Kit (Cat#716).

SUPPORT

SUPPORT@GENUINBIOTECH.COM
TEL: +1-540-855-7041

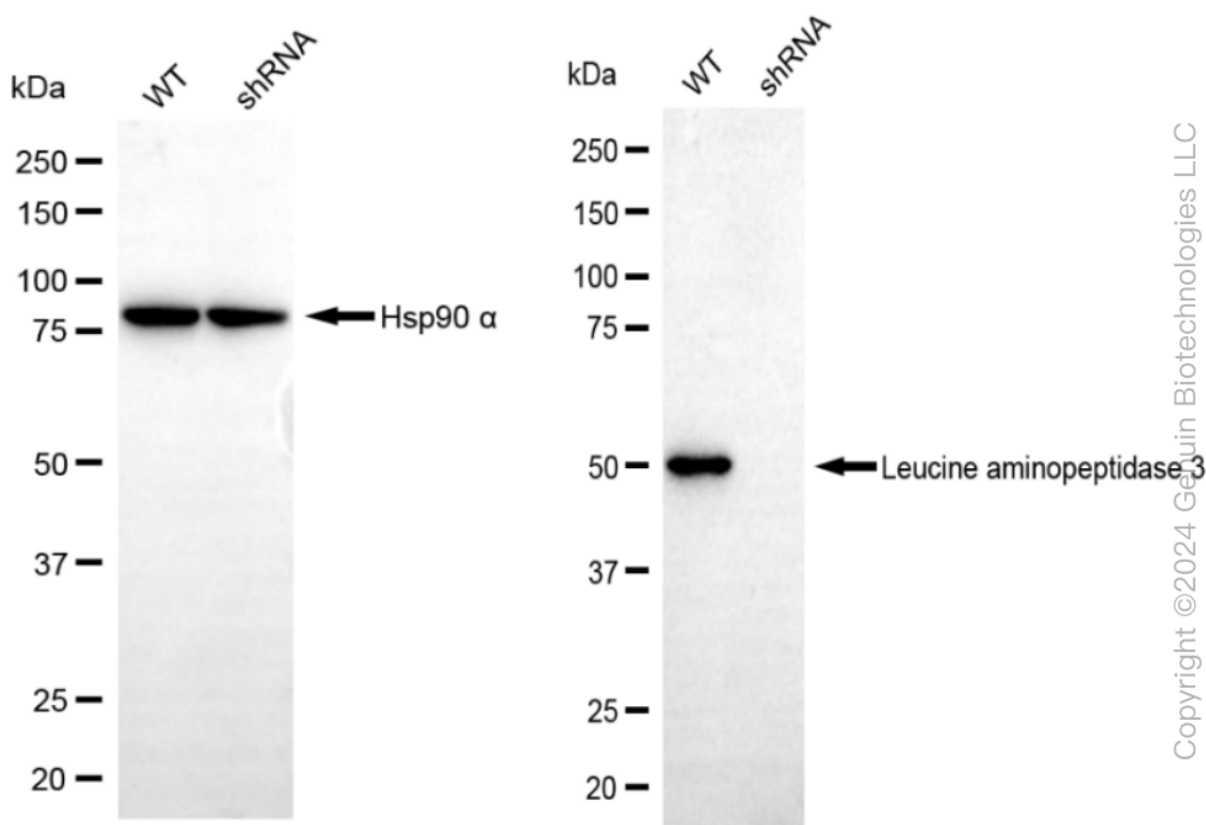
ORDERS

SALES@GENUINBIOTECH.COM
FAX: +1-540-855-7041

WWW.GENUINBIOTECH.COM

KD-Validated Anti-Leucine aminopeptidase 3 Recombinant Rabbit Monoclonal Antibody

PAGE 4



Western blotting analysis using anti-leucine aminopeptidase 3 antibody (Cat#61144). Leucine aminopeptidase 3 expression in wild type (WT) and leucine aminopeptidase 3 (LAP3) shRNA knockdown (KD) HeLa cells with 20 µg of total cell lysates. Hsp90 α serves as a loading control. The blot was incubated with anti-leucine aminopeptidase 3 antibody (Cat#61144, 1:5,000) and HRP-conjugated goat anti-rabbit secondary antibody (Cat#201, 1:20,000) respectively. Image was developed using NaQ™ ECL Substrate Kit (Cat#716).

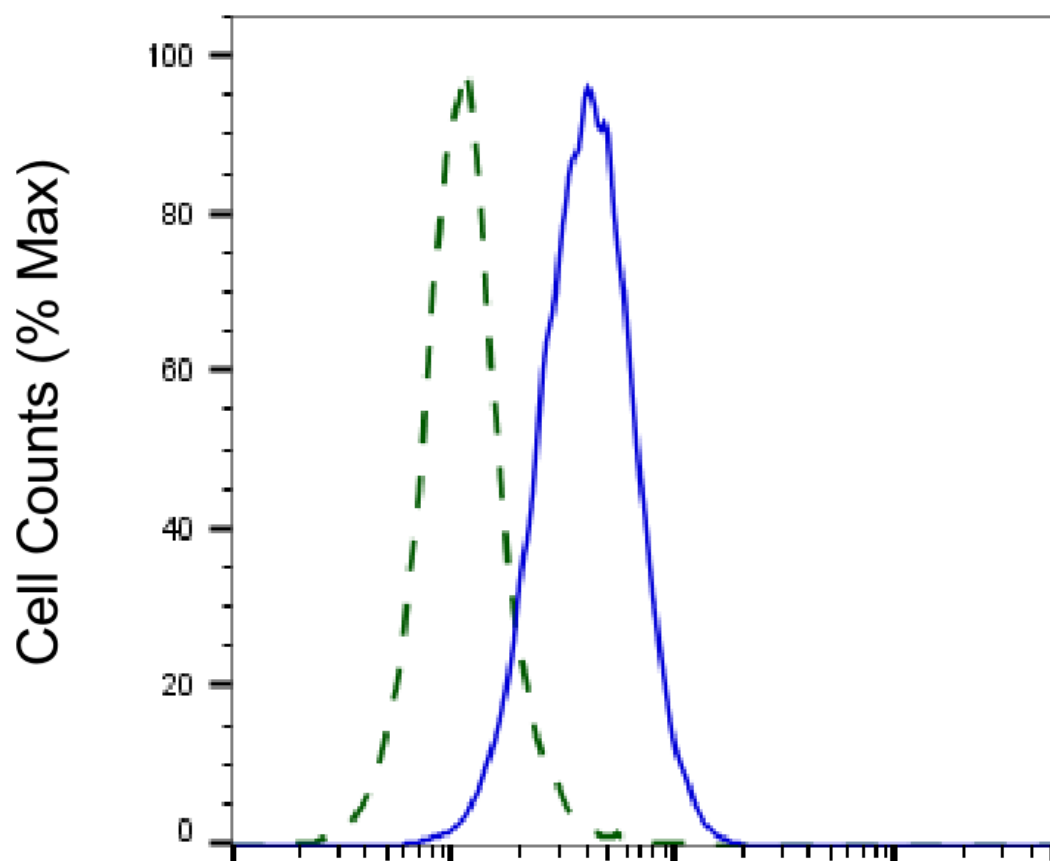
SUPPORT

SUPPORT@GENUINBIOTECH.COM
TEL: +1-540-855-7041

ORDERS

SALES@GENUINBIOTECH.COM
FAX: +1-540-855-7041

WWW.GENUINBIOTECH.COM



Copyright ©2025 Genuin Biotechnologies LLC

Leucine aminopeptidase 3-Alexa Fluor® 647

Validation of Leucine aminopeptidase 3 knockdown using flow cytometry. Wild-type(WT, Blue) and knockdown(KD, Green) HeLa cells were stained with anti-Leucine aminopeptidase 3 antibody (Cat#61144, 1:2,000) and analyzed using BD flow cytometer.