

KD-Validated Anti-ROCK2 Recombinant Rabbit Monoclonal Antibody



Catalog #: 61147

Aliases

ROCK2; Rho Associated Coiled-Coil Containing Protein Kinase 2; Rho-Associated, Coiled-Coil-Containing Protein Kinase II; Rho-Associated Protein Kinase 2; P164 ROCK-2; EC 2.7.11.1; ROCK-II; Rho-Associated, Coiled-Coil-Containing Protein Kinase 2; Rho Kinase 2; EC 2.7.11; KIAA0619

Background

Gene Name: ROCK2

NCBI Gene Entry: [9475](#)

UniProt Entry: [O75116](#)

Application Information

Molecular Weight: Predicted, 161 kDa, observed, 161 kDa

Clonality: Rabbit monoclonal antibody

Clone ID: 23GB2030

Species Reactivity: Human, mouse, rat

Applications Tested: Western blotting (WB), flow cytometry (FCM), immunocytochemistry (IC)

Immunogen

A synthesized peptide derived from human ROCK2

Isotype

Rabbit IgG

Storage Buffer

Supplied in PBS (pH 7.4) containing 50% glycerol, and 0.02% sodium azide.

Storage

Store at -20 °C for one year.

Recommended Dilutions

Western Blotting (WB): 1:1,000-1:5,000

Flow Cytometry (FCM): 1:2,000

Immunocytochemistry (IC): 1:100-1:1,000

SUPPORT

SUPPORT@GENUINBIOTECH.COM
TEL: +1-540-855-7041

ORDERS

SALES@GENUINBIOTECH.COM
FAX: +1-540-855-7041

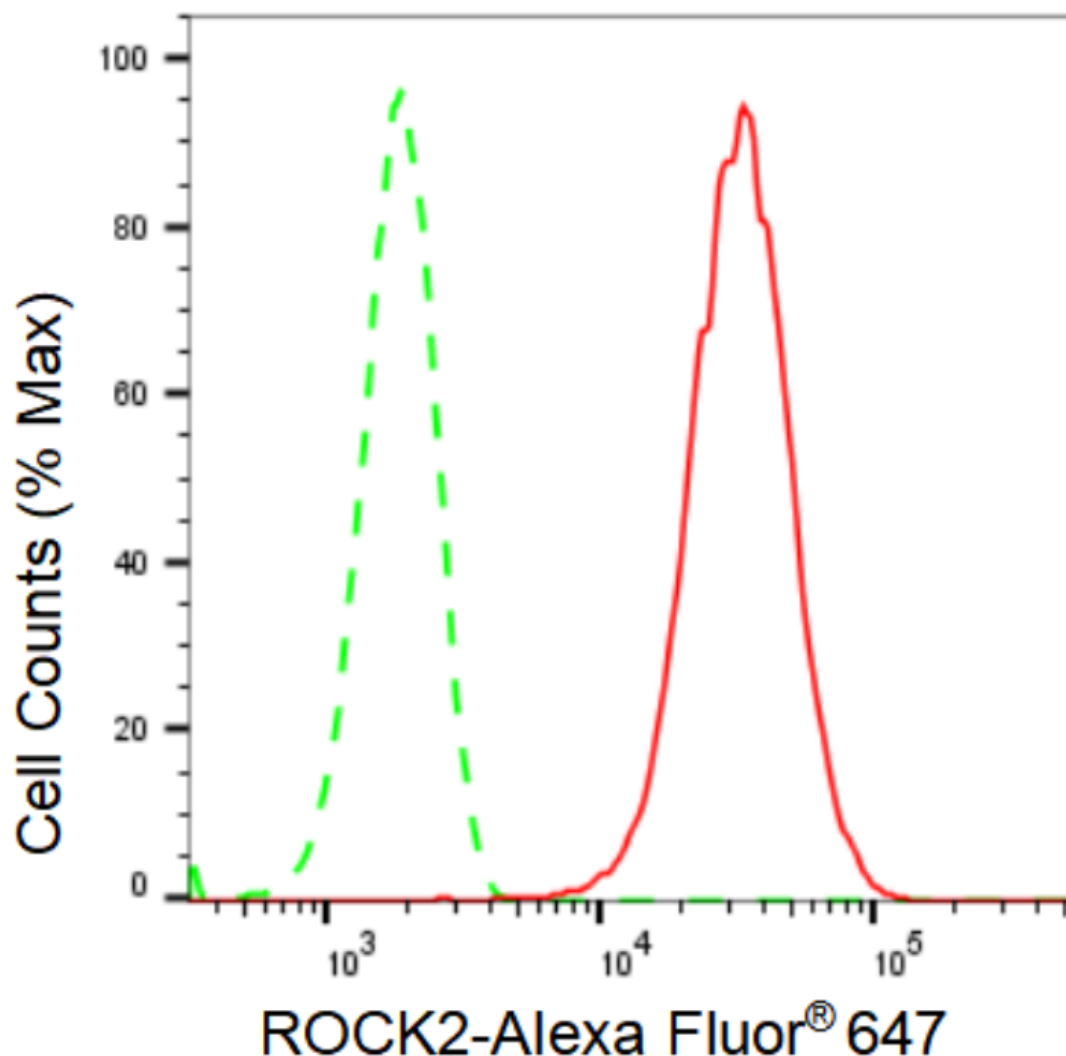
WWW.GENUINBIOTECH.COM

KD-Validated Anti-ROCK2 Recombinant Rabbit Monoclonal Antibody

PAGE 2

Note: This product is for research use only.

Validation Data



Copyright ©2024 Genuin Biotechnologies LLC

Flow cytometric analysis of ROCK2 expression in HepG2 cells using ROCK2 antibody (Cat#61147, 1:2,000). Green, isotype control; red, ROCK2.

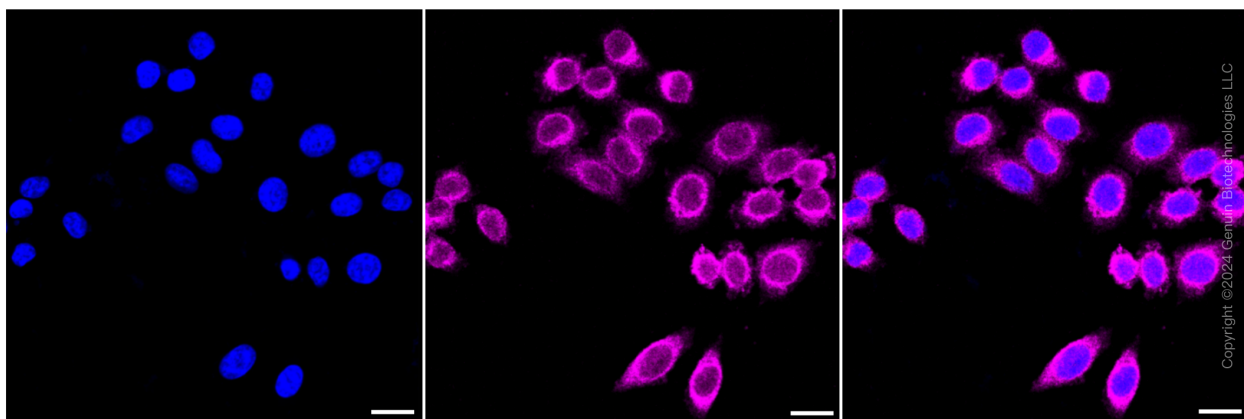
SUPPORT

SUPPORT@GENUINBIOTECH.COM
TEL: +1-540-855-7041

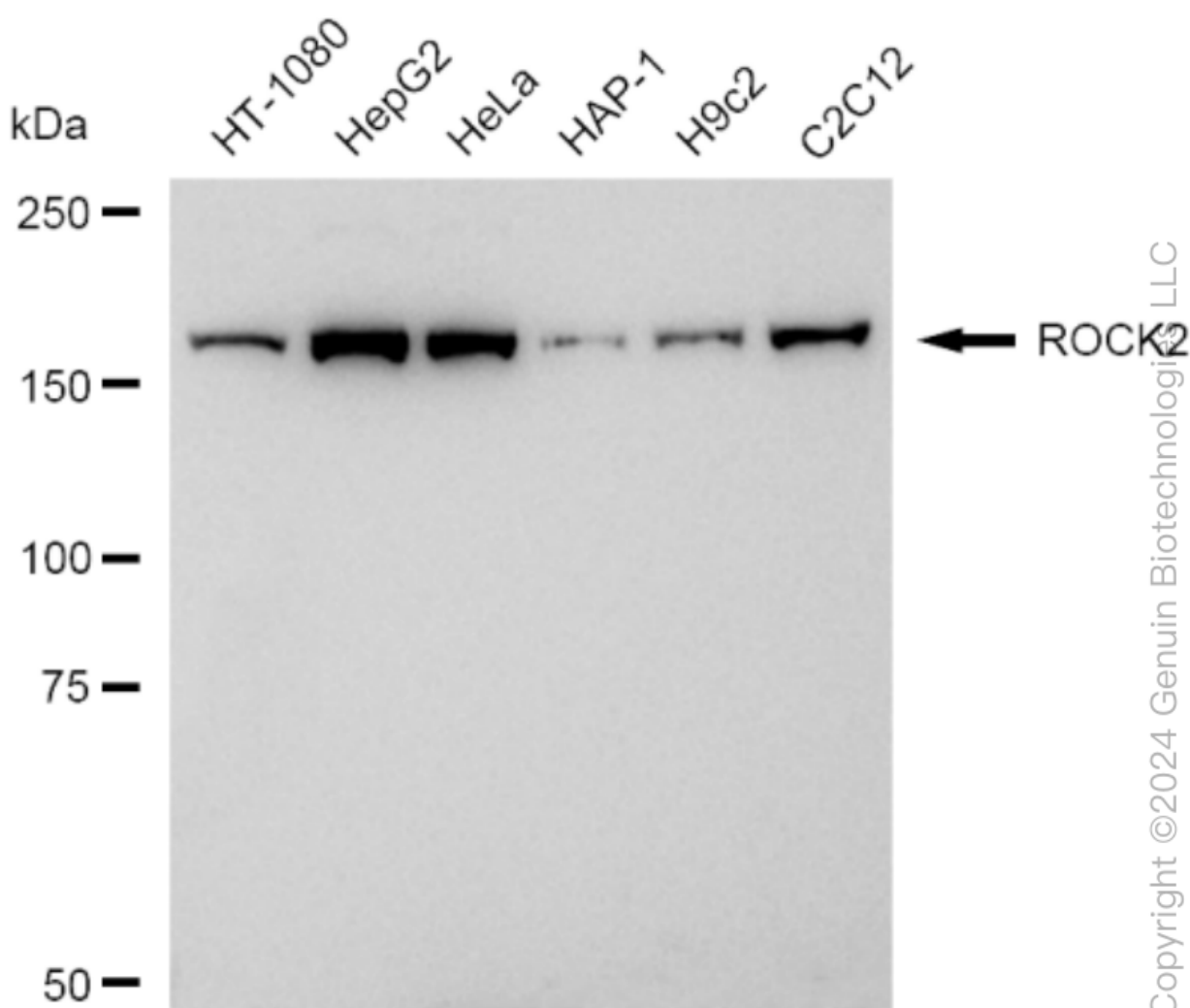
ORDERS

SALES@GENUINBIOTECH.COM
FAX: +1-540-855-7041

WWW.GENUINBIOTECH.COM



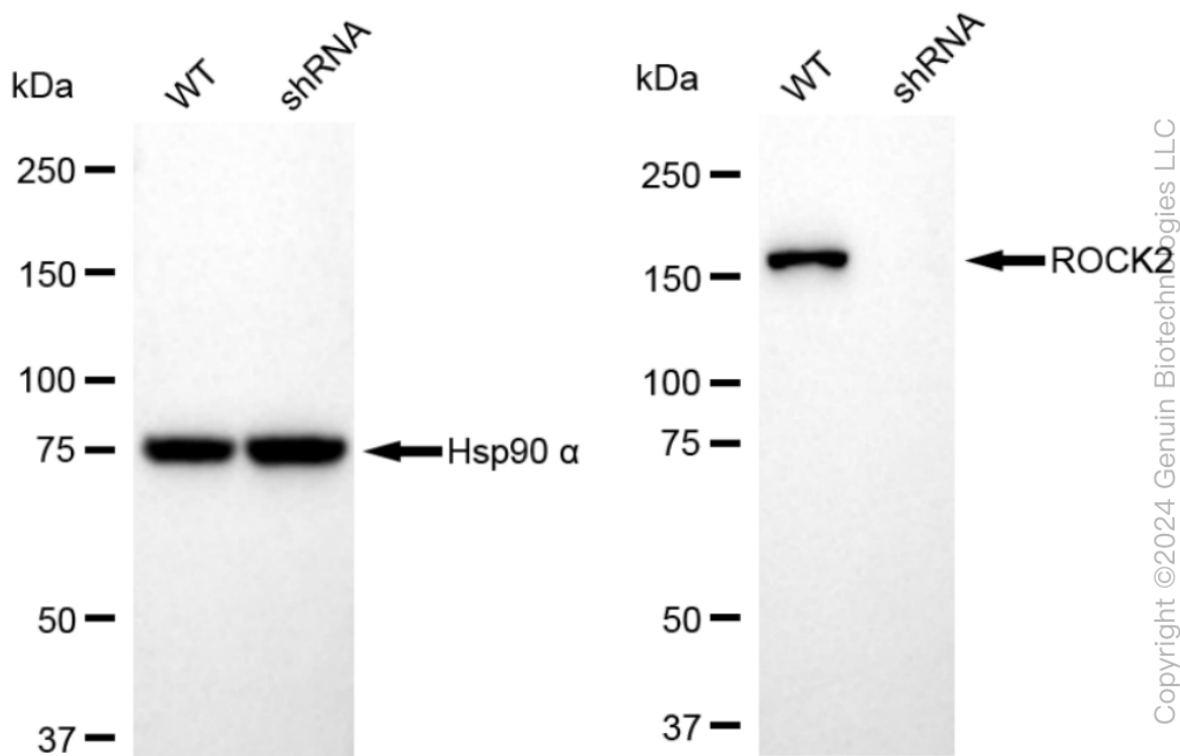
Immunocytochemical staining of HepG2 cells with ROCK2 antibody (Cat#61147, 1:1,000). Nuclei were stained blue with DAPI; ROCK2 cochaperone 3 was stained magenta with Alexa Fluor® 647. Images were taken using Leica stellaris 5. Protein abundance based on laser Intensity and smart gain: Medium. Scale bar: 20 µm.



KD-Validated Anti-ROCK2 Recombinant Rabbit Monoclonal Antibody

PAGE 4

Western blotting analysis using anti-ROCK2 antibody (Cat#61147). Total cell lysates (30 µg) from various cell lines were loaded and separated by SDS-PAGE. The blot was incubated with anti-ROCK2 antibody (Cat#61147, 1:5,000) and HRP-conjugated goat anti-rabbit secondary antibody (Cat#201, 1:20,000) respectively. Image was developed using FeQ™ ECL Substrate Kit (Cat#226).



Western blotting analysis using anti-ROCK2 antibody (Cat#61147). ROCK2 expression in wild type (WT) and ROCK2 shRNA knockdown (KD) HeLa cells with 30 µg of total cell lysates. Hsp90 α serves as a loading control. The blot was incubated with anti-ROCK2 antibody (Cat#61147, 1:5,000) and HRP-conjugated goat anti-rabbit secondary antibody (Cat#201, 1:20,000) respectively. Image was developed using FeQ™ ECL Substrate Kit (Cat#226).

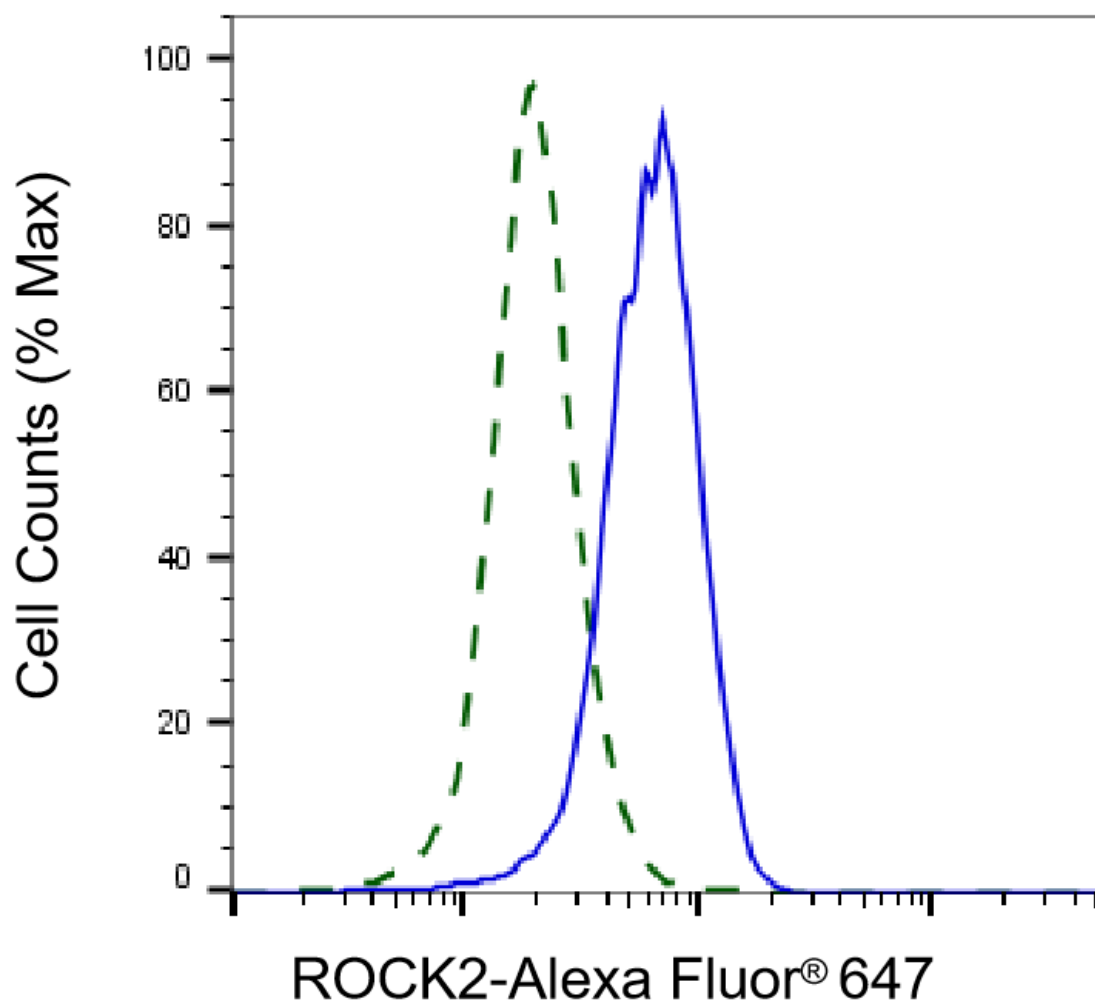
SUPPORT

SUPPORT@GENUINBIOTECH.COM
TEL: +1-540-855-7041

ORDERS

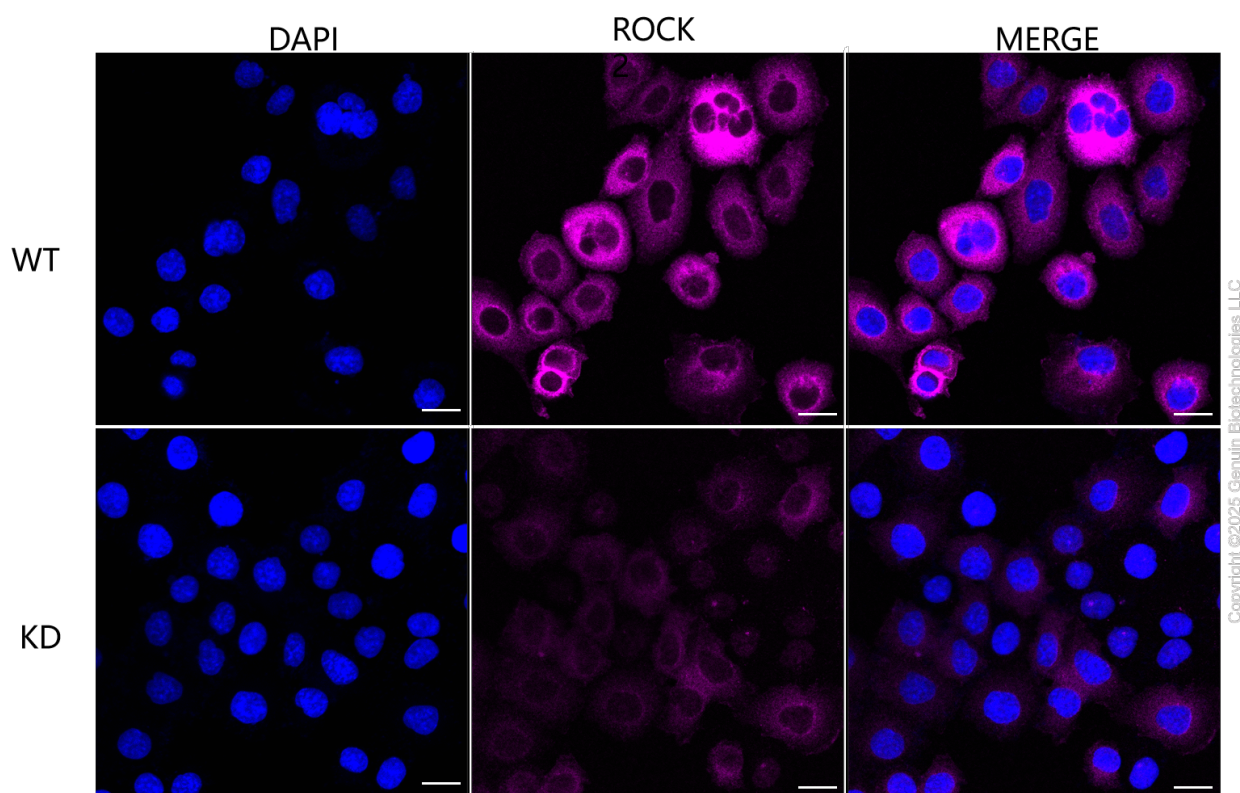
SALES@GENUINBIOTECH.COM
FAX: +1-540-855-7041

WWW.GENUINBIOTECH.COM



Copyright ©2025 Genuin Biotechnologies LLC

Validation of ROCK2 knockdown using flow cytometry. Wild-type(WT, Blue) and knockdown(KD, Green) HeLa cells were stained with anti-ROCK2 antibody (Cat#61147, 1:2,000) and analyzed using BD flow cytometer.



Immunocytochemical staining of HeLa cells using anti-ROCK2 antibody (Cat#61147, 1:1,000), Top panel: wild-type (WT); Bottom panel: ROCK2 shRNA knockdown (KD). Nuclei were stained blue with DAPI; ROCK2 was stained magenta with Alexa Fluor® 647. Scale bar, 20 μ m. Permeabilization: Triton.