

# KD-Validated Anti-ATG7 Recombinant Rabbit Monoclonal Antibody



**Catalog #: 61148**

## Aliases

ATG7; Autophagy Related 7; Ubiquitin-Activating Enzyme E1-Like Protein; Ubiquitin-Like Modifier-Activating Enzyme ATG7; ATG12-Activating Enzyme E1 ATG7; APG7L; HAGP7; ATG7 Autophagy Related 7 Homolog (S. Cerevisiae); APG7 Autophagy 7-Like (S. Cerevisiae); Autophagy-Related Protein 7; APG7 Autophagy 7-Like; APG7-LIKE; APG7-Like; GSA7

## Background

Gene Name: ATG7

NCBI Gene Entry: [10533](#)

UniProt Entry: [O95352](#)

## Application Information

Molecular Weight: Predicted, 78 kDa, observed, 70 kDa

Clonality: Rabbit monoclonal antibody

Clone ID: 24GB5975

Species Reactivity: Human

Applications Tested: Western blotting (WB), flow cytometry (FCM), immunocytochemistry (IC)

## Immunogen

A synthesized peptide derived from human ATG7

## Isotype

Rabbit IgG

## Storage Buffer

Supplied in PBS (pH 7.4) containing 50% glycerol, and 0.02% sodium azide.

## Storage

Store at -20 °C for one year.

## Recommended Dilutions

Western Blotting (WB): 1:10,000-1:50,000

Flow Cytometry (FCM): 1:2,000

Immunocytochemistry (IC): 1:100-1:1,000

---

### SUPPORT

SUPPORT@GENUINBIOTECH.COM  
TEL: +1-540-855-7041

### ORDERS

SALES@GENUINBIOTECH.COM  
FAX: +1-540-855-7041

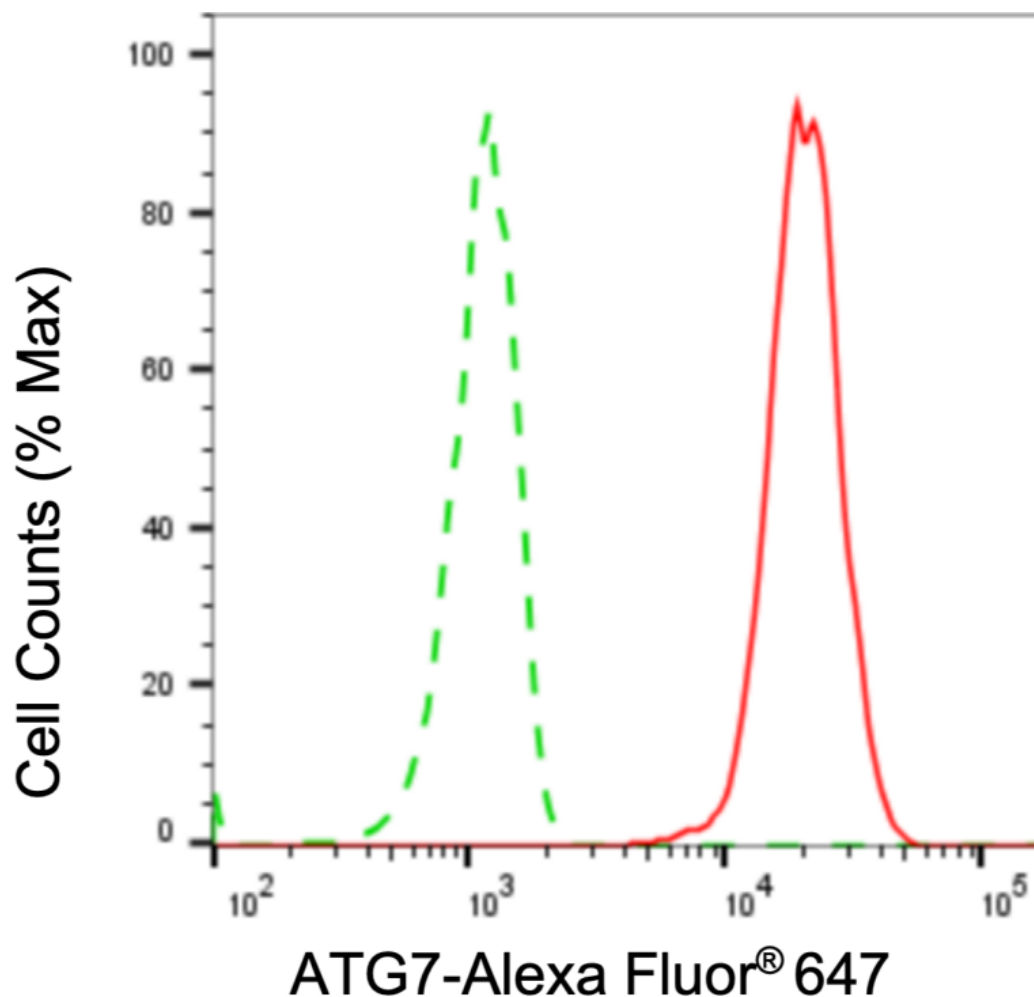
[WWW.GENUINBIOTECH.COM](http://WWW.GENUINBIOTECH.COM)

## KD-Validated Anti-ATG7 Recombinant Rabbit Monoclonal Antibody

PAGE 2

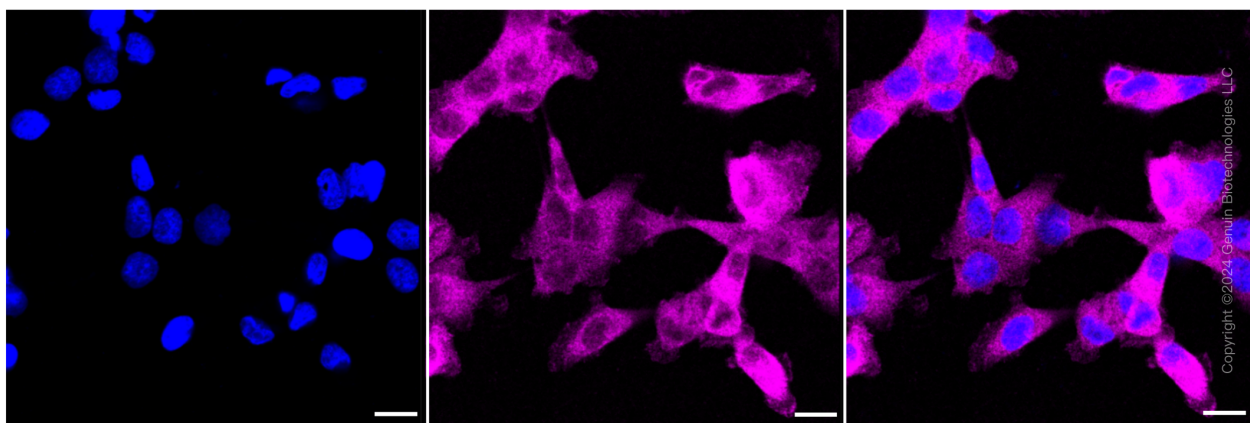
**Note:** This product is for research use only.

### Validation Data



Copyright ©2024 Genuin Biotechnologies LLC

Flow cytometric analysis of ATG7 expression in HepG2 cells using ATG7 antibody (Cat#61148, 1:2,000). Green, isotype control; red, ATG7.



Immunocytochemical staining of HT-1080 cells with ATG7 antibody (Cat#61148, 1:1,000). Nuclei

#### SUPPORT

SUPPORT@GENUINBIOTECH.COM  
TEL: +1-540-855-7041

#### ORDERS

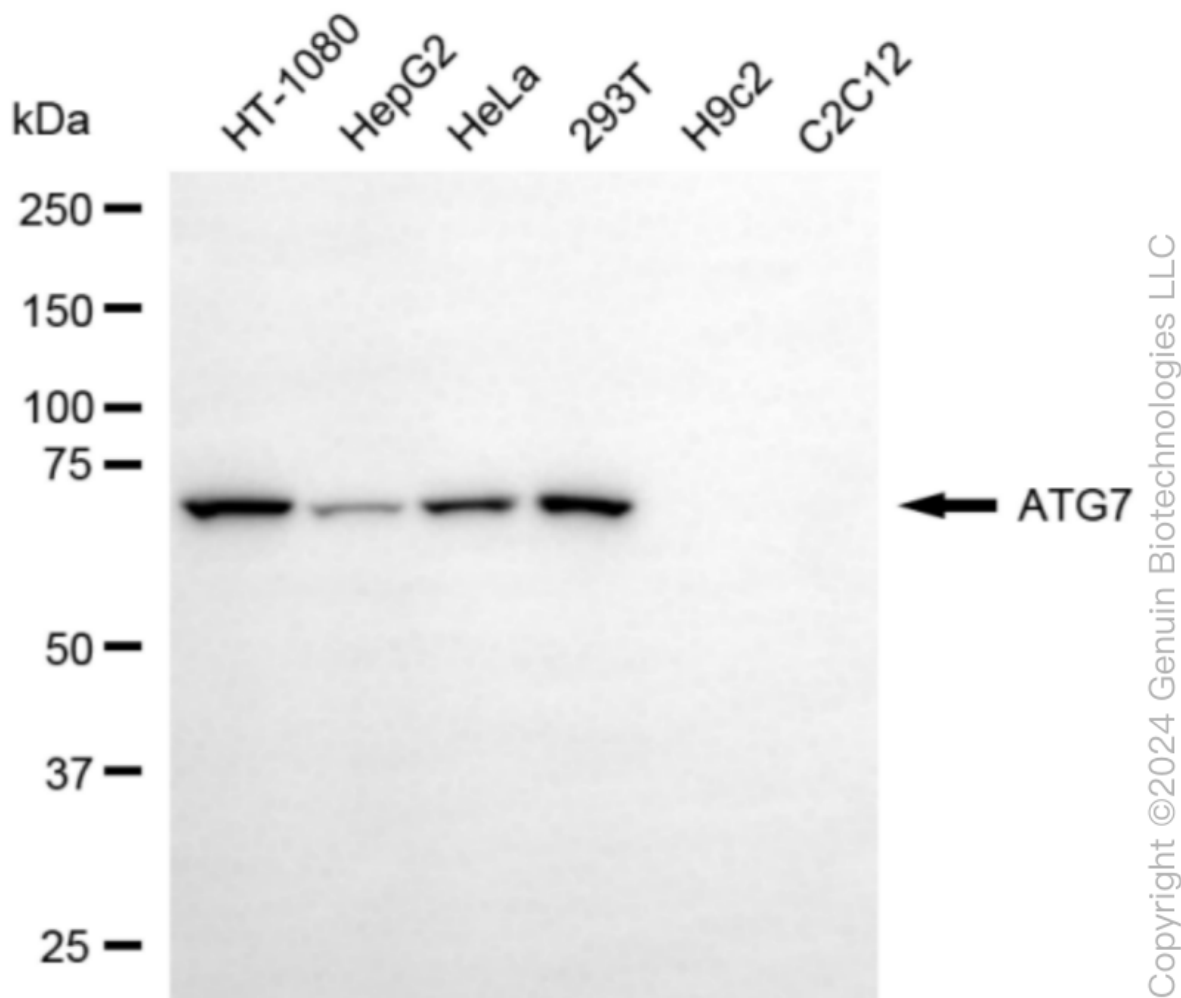
SALES@GENUINBIOTECH.COM  
FAX: +1-540-855-7041

WWW.GENUINBIOTECH.COM

## KD-Validated Anti-ATG7 Recombinant Rabbit Monoclonal Antibody

PAGE 3

were stained blue with DAPI; ATG7 was stained magenta with Alexa Fluor® 647. Images were taken using Leica stellaris 5. Protein abundance based on laser Intensity and smart gain: Medium. Scale bar: 20  $\mu$ m.



Western blotting analysis using anti-ATG7 antibody (Cat#61148). Total cell lysates (30  $\mu$ g) from various cell lines were loaded and separated by SDS-PAGE. The blot was incubated with anti-ATG7 antibody (Cat#61148, 1:50,000) and HRP-conjugated goat anti-rabbit secondary antibody (Cat#201, 1:20,000) respectively. Image was developed using NaQ™ ECL Substrate Kit (Cat#716).

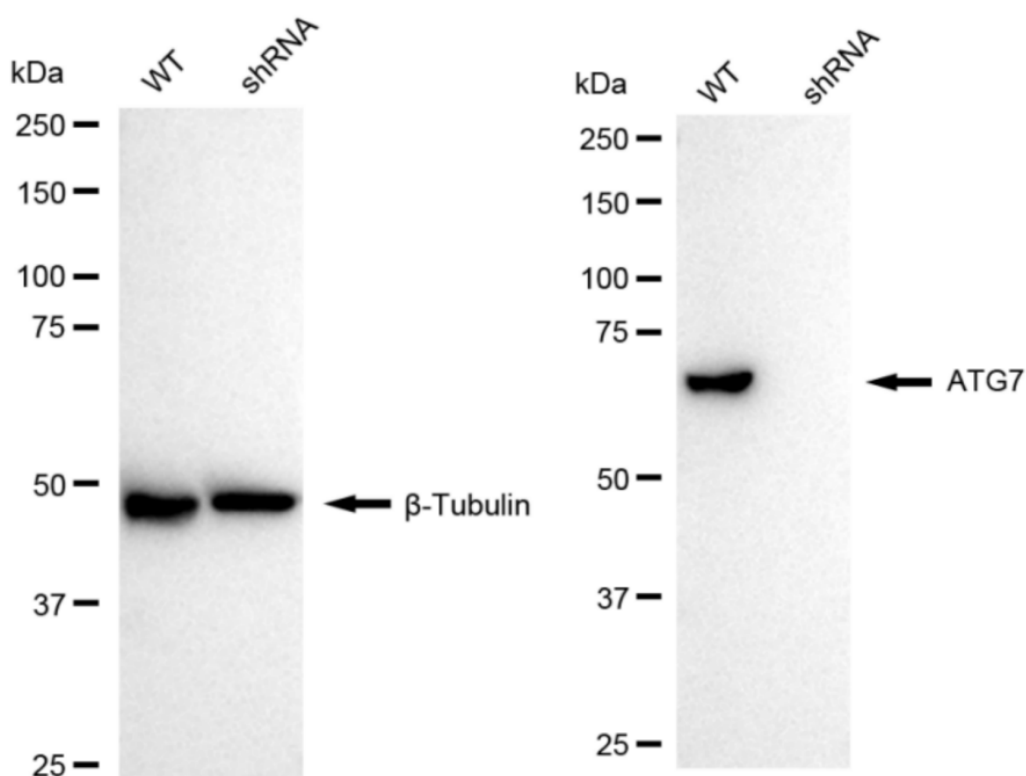
### SUPPORT

SUPPORT@GENUINBIOTECH.COM  
TEL: +1-540-855-7041

### ORDERS

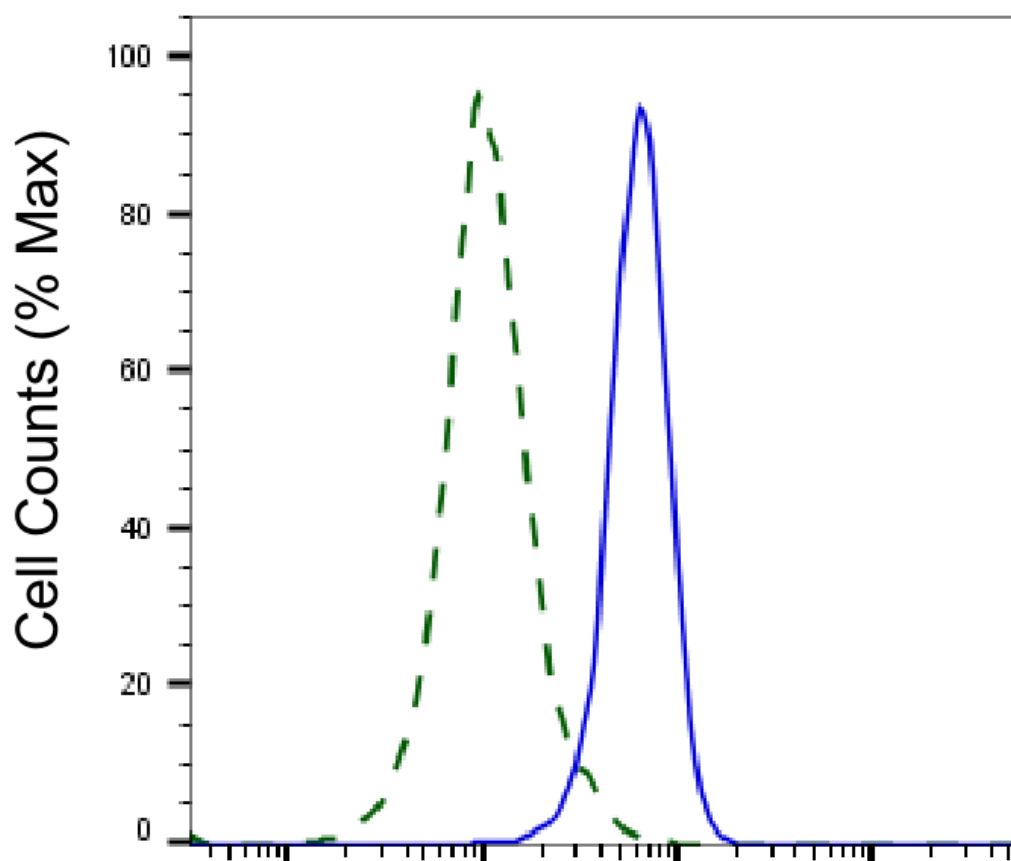
SALES@GENUINBIOTECH.COM  
FAX: +1-540-855-7041

WWW.GENUINBIOTECH.COM



Copyright ©2024 Genuin Biotechnologies LLC

Western blotting analysis using anti-ATG7 antibody (Cat#61148). ATG7 expression in wild type (WT) and ATG7 shRNA knockdown (KD) 293T cells with 20  $\mu$ g of total cell lysates.  $\beta$ -Tubulin serves as a loading control. The blot was incubated with anti-ATG7 antibody (Cat#61148, 1:5,000) and HRP-conjugated goat anti-rabbit secondary antibody (Cat#201, 1:20,000) respectively. Image was developed using NaQ<sup>TM</sup> ECL Substrate Kit (Cat#716).



Copyright ©2025 Genuin Biotechnologies LLC

## ATG7-Alexa Fluor® 647

Validation of ATG7 knockdown using flow cytometry. Wild-type(WT, Blue) and knockdown(KD, Green) 293T cells were stained with anti-ATG7 antibody (Cat#61148, 1:2,000) and analyzed using BD flow cytometer.